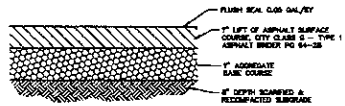
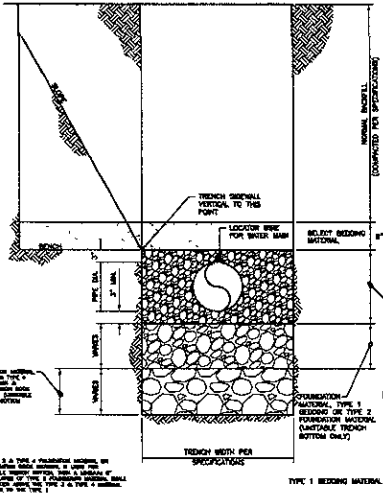


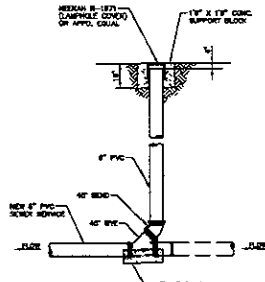
**CONCRETE PAVEMENT**  
NOT TO SCALE



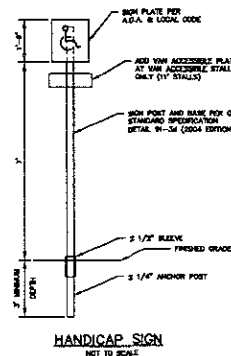
**ASPHALT PAVEMENT**  
NOT TO SCALE



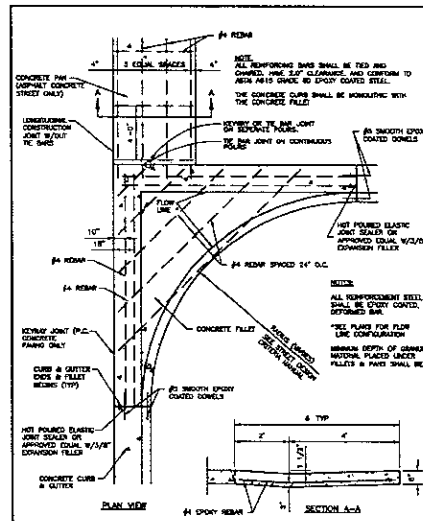
**WATER & SEWER TRENCH DETAIL**  
NOT TO SCALE



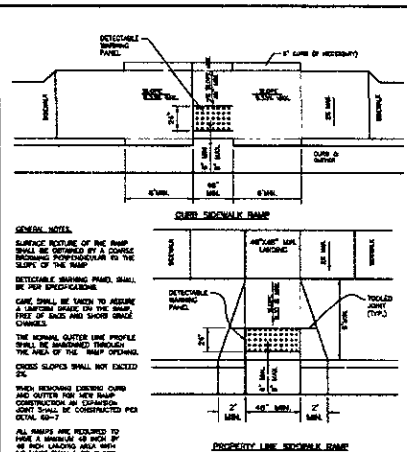
**SEWER CLEANOUT DETAIL**  
NOT TO SCALE



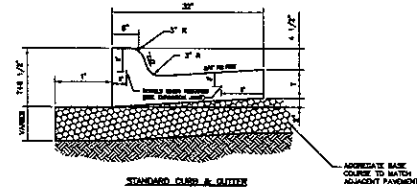
**HANDICAP SIGN**  
NOT TO SCALE



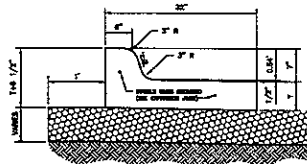
**REINFORCED PORTLAND CEMENT CONCRETE FILLET & PAN**  
DATE: 5-1-07  
SEC. SHEET: 60-1



**HANDICAP ACCESS RAMPS**  
DATE: 5-1-07  
SEC. SHEET: 61-5

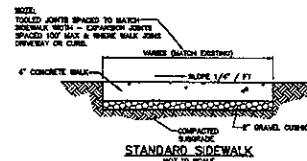


**STANDARD CURB & GUTTER**  
WHERE T IS EQUAL TO PAVEMENT THICKNESS OR 6", WHICHEVER IS GREATER

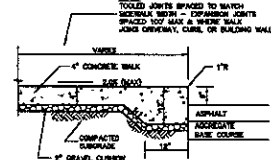


**LIMITED CURB & GUTTER**  
WHERE T IS EQUAL TO PAVEMENT THICKNESS OR 6", WHICHEVER IS GREATER

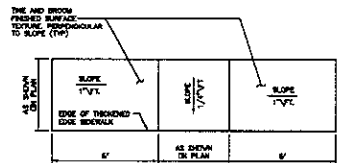
NOTE: ALL CURB & GUTTER SHALL HAVE A 28 DAY COMPRESSIVE STRENGTH OF NOT LESS THAN 4000 P.S.I. & ARE CONTAINED IN 2' TO 4' CURB TO JOINT ALL JOINTS SPACED AND TOP OF CURB EXEMPTIONS UNLESS OTHERWISE INDICATED ON PLANS. EXPANSION JOINTS SHALL BE PLACED IN THE CURB & GUTTER AT EACH SECTION OF CURB. PAVEMENT TRANSVERSE JOINT CONSTRUCTION JOINTS SHALL BE PLACED IN THE CURB & GUTTER AT 16' INTERVALS OR BAYHOUT JOINTS OF CONCRETE PAVEMENT



**STANDARD SIDEWALK**  
NOT TO SCALE



**THICKENED EDGE SIDEWALK**  
NOT TO SCALE

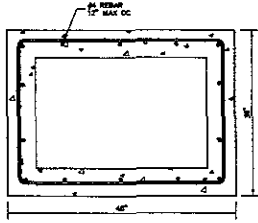


**THICKENED EDGE SIDEWALK RAMP-TYPE L**  
NOT TO SCALE

**NOT FOR CONSTRUCTION**

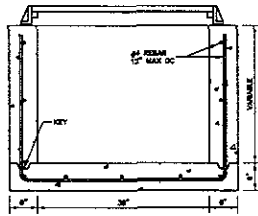
File Number:	09015
Location:	SEC 1/A SECTION 35
Drawn by:	CSL
Checked by:	KSL
Date:	FEBRUARY 2009

**CONQUEST DEVELOPMENT  
NEW BUILDING  
RAPID CITY, SD**



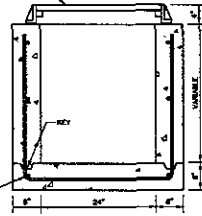
TOP VIEW

CONSTRUCT INLET IN ACCORDANCE WITH CITY OF RAPID CITY SPECIFICATIONS FOR PUBLIC WORKS CONSTRUCTION



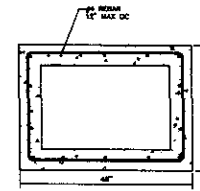
FRONT VIEW

MEDIUM R-REIN-GRS FRAME AND GRATE OR DECK

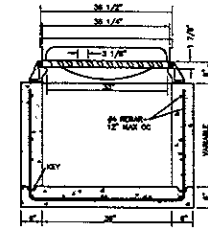


SIDE VIEW

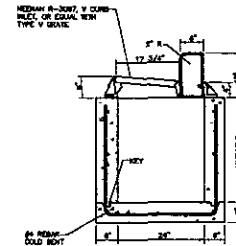
TYPE "A" INLET  
NOT TO SCALE



TOP VIEW

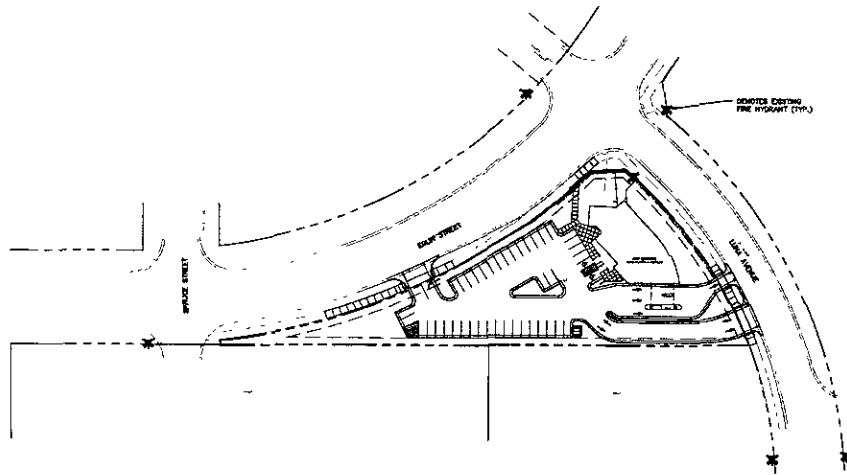


FRONT VIEW

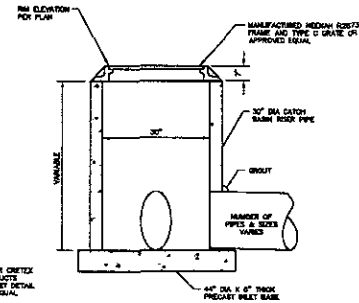


SIDE VIEW

TYPE "B" INLET  
NOT TO SCALE



FIRE HYDRANT LOCATION MAP



NOTE TO BE FOR OTHER CONCRETE PRODUCTS BEST PRACTICE INLET DETAIL OR APPROVED EQUAL

TYPE 30 STORM INLET  
NOT TO SCALE

**FMG, Inc.**  
 3700 Shauge Road  
 Rapid City, SD 57705-0317  
 (605) 342-4108 FAX (605) 342-4222

NOT FOR CONSTRUCTION

File Number: 090018  
 Location: S&J/A SECTION 30  
 Title: SEE SHEET  
 Surveyed by: CR/AM/JB  
 Date: FEBRUARY 2009  
 Designed by: JCF  
 Drawn by: KSL/MS  
 Checked by: JCF

CONQUEST DEVELOPMENT  
 NEW BUILDING  
 RAPID CITY, SD

Revision / Date  
 Sheet Name  
 DETAILS  
 Sheet Number  
**C5 of C5**