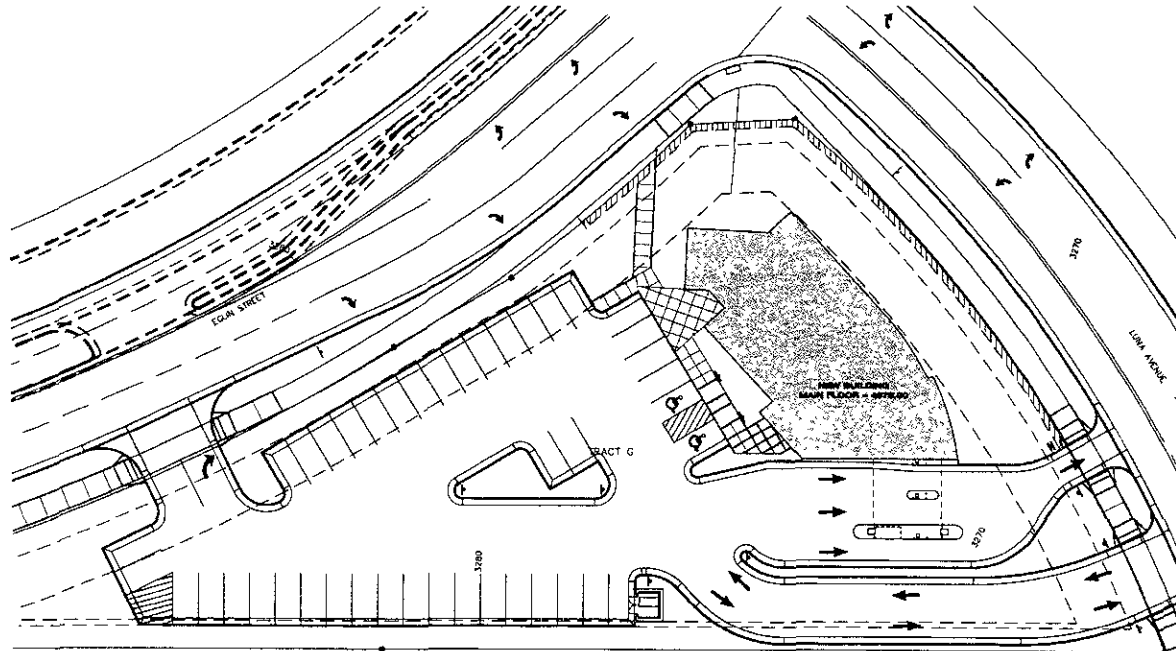


PARKING TABLE	
NET GROSS SQUARE FOOTAGE	
LOWER LEVEL	4491 SF
UPPER LEVEL	1011 SF
VAULT AREA	1001 SF
TOTAL	6503 SF
PARKING CALCULATIONS	
REQUIRED	48 SPACES
LOWER LEVEL (MECHANICAL STORAGE)	120 SPACES (3000 SF)
UPPER LEVEL (TRANSFORMERS AND LOAN)	41 SPACES (1025 SF)
VAULT (VAULT)	1 SP
WORK LEVEL (ENGINEERING AND LOAN OFFICES)	1 (15 SPACES/3000 SF)
42-45/1000	1-20
2-4/20	4
ACCESSIBLE SPACES (INCLUDED IN GROSS AREA)	2 (REQUIRED TO BE VAN ACCESSIBLE)
SHOW	42 SPACES



4 SITE PLAN
1" = 30'-0"



9300 Hennepin Town Road
 Edin Prairie, MN 55347
 Tel: 952.273.8800 Fax: 952.273.8822
 COPYRIGHT © 2008 by HTG Architects

PROJECT

CONQUEST DEVELOPMENT

NEW BUILDING

RAPID CITY, SOUTH DAKOTA

ISSUED SET	03-28-08 PLANNING SUBMITTAL
REVISIONS	
DATE	NO

I HEREBY CERTIFY THAT THIS PLAN, SPECIFICATIONS OR DETAILS PREPARED BY ME OR UNDER MY DIRECT SUPERVISION AND THAT I AM A duly LICENSED ARCHITECT UNDER THE LAWS OF THE STATE OF SOUTH DAKOTA

JENNIFER J. WILKINSON
 ARCHT. DATE

SITE PLAN

DRAWN BY: EB CHECKED BY: KLL

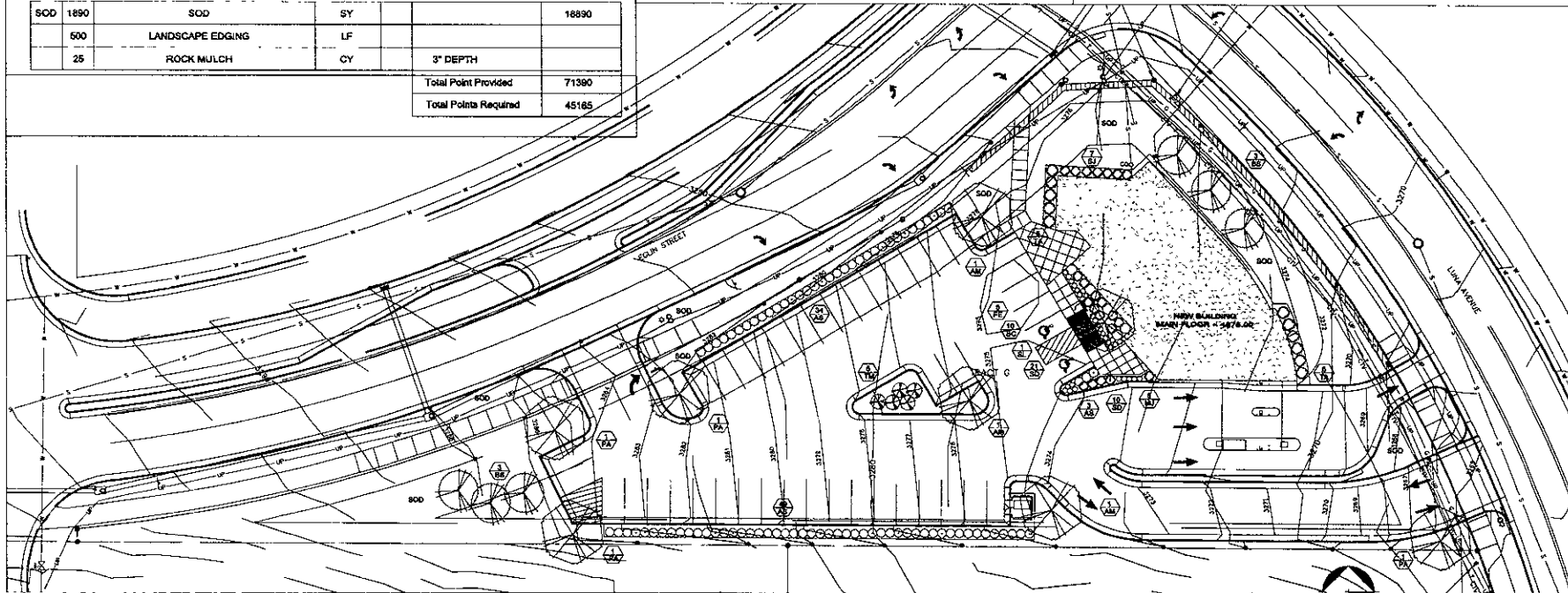
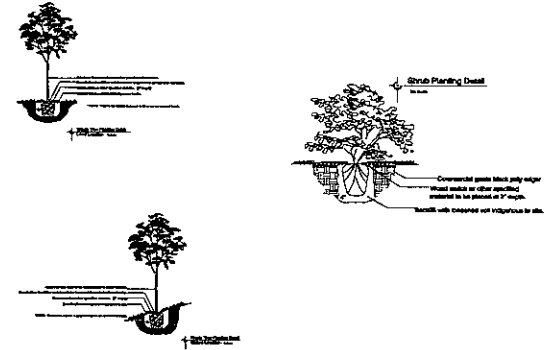
A1

PLANT SCHEDULE

KEY	QTY	COMMON/BOTANICAL NAME	SIZE	ROOT	REMARKS	POINTS
OVERSTORY TREES						
AM	3	Autumn Blaze Maple <i>Acer Fraxinifera 'Jefferson'</i>	2"	BB		6000
SL	1	Sylphium Honeylocust <i>Gleditsia triacanthos 'Sylphium'</i>	2"	BB		1000
PA	4	Prinosapra Ash <i>Fraxinus Penna 'Prinosapra'</i>	2"	BB		4000
EVERGREEN TREES						
BS	4	Black Hill Spruce <i>Picea Glauca Densata</i>	4'	BB		8000
BS	2	Black Hill Spruce <i>Picea Glauca Densata</i>	6'	BB		4000
ORNAMENTAL SHRUBS & EVERGREENS						
AH	8	Annabelle Hydrangea <i>Hydrangea Arborescens 'Annabelle'</i>	#3	CONT		2000
AS	88	Anthony Waterer Spiraea <i>Spiraea x bumalda 'Anthony Waterer'</i>	#2	CONT		21500
FE	5	Fireball Euonymus <i>Euonymus Alatus 'Select'</i>	#6	CONT		1250
MJ	5	Mint Julep Juniper <i>Juniperus chinensis 'Montpel'</i>	#6	CONT		1250
BC	10	Blue Chip Juniper <i>Juniperus Horizontalis 'Blue Chip'</i>	#6	CONT		0
SJ	5	Scandia Juniper <i>Juniperus Sabina 'Scandia'</i>	#6	CONT		1500
TA	9	Techy Arborvitae <i>Thuja Occidentalis 'Techny'</i>	4'	CONT		2000
TM	5	Big Tuna Mugo Pine <i>Pinus Mugo 'Big Tuna'</i>	#7	CONT		1250
SD	31	Stella De Oro Daylily <i>Hemerocallis 'Stella De Oro'</i>	#1	CONT		0
MISC ITEMS						
SOD	1890	SOD	SY			18890
	500	LANDSCAPE EDGING	LF			
	25	ROCK MULCH	CY		3" DEPTH	
Total Points Provided						71390
Total Points Required						45165

LANDSCAPE NOTES

- ALL PLANTING BEDS TO BE EDGED WITH BLACK DIAMOND OR EQUAL BLACK VINYL EDGING AND MULCHED WITH MULCH INDICATED ON PLAN OVER TYPAR WEED BARRIER FABRIC OR EQUAL.
- LANDSCAPE CONTRACTOR SHALL BE RESPONSIBLE FOR CONTACTING UNDERGROUND UTILITY CALL FOR UNDERGROUND UTILITY LOCATIONS PRIOR TO DIGGING.
- PLANT TREES & SHRUBS AFTER FINAL GRADIES ARE ESTABLISHED AND PRIOR TO PLANTING OF LAWNS UNLESS OTHERWISE ACCEPTABLE TO GENERAL CONTRACTOR OR OWNER. IF PLANTING OF TREES & SHRUBS OCCURS AFTER LAWN WORK, PROTECT LAWN AREAS AND PROMPTLY REPAIR AT NO COST TO THE OWNER, DAMAGE TO LAWNS RESULTING FROM PLANTING OPERATIONS.
- IF SPECIFIED MATERIAL IS NOT OBTAINABLE, NOTIFY GENERAL CONTRACTOR OR OWNER, ALONG WITH A DESCRIPTION OF EQUIVALENT MATERIAL.
- IF THERE IS A DISCREPANCY BETWEEN THE NUMBER OF PLANTS SHOWN ON THE PLAN, AND THE NUMBER SHOWN ON THE PLANT LIST, THE NUMBER SHOWN ON THE PLAN SHALL GOVERN.
- LANDSCAPE CONTRACTOR SHALL WARRANT TREES & SHRUBS FOR A PERIOD OF ONE YEAR AFTER DATE OF FINAL ACCEPTANCE AGAINST DEFECTS INCLUDING DEATH, POOR GROWTH, AND FLAME ORIENTATION.
- PROVIDE SOIL AMENDMENTS AT ALL TREE & SHRUB PLANTING HOLES CONSISTING OF EQUAL MIX OF ORGANIC MATERIAL, BLACK DIRT, AND SAND.
- ALL MATERIAL SHALL BE RATED FOR APPROPRIATE TEMPERATURE ZONE AND SHALL COMPLY WITH THE LATEST EDITION OF THE AMERICAN STANDARD FOR NURSERY STOCK, AMERICAN ASSOCIATION OF NURSERMEN.
- ALL LAWN AREAS TO HAVE IRRIGATION AND SOD TO PROPERTY LINES AND/OR TO BACK OF GARAGE ALONG SIGHT OF PARK.
- SOD SHALL BE CULTURED KENTUCKY BLUEGRASS, FREE OF WEEDS & CLUMPS. LANDSCAPE CONTRACTOR ROLL WATER AT TIME OF INSTALLATION AND ROLL ALL SOD AS NEEDED TO ASSURE A SMOOTH TURF SURFACE. ALL SLOPES GREATER THAN 3:1 SHALL BE STAKED. ANY SLIDING OF SOD SHALL BE REPLACED BY THE LANDSCAPE CONTRACTOR.
- ALL SOD IS TO BE IRRIGATED.
- ALL TREES PLANTED SHALL RECEIVE 3" SHREDED WOOD MULCH SAUERS WITH A MINIMUM DEPTH OF 4" AS SHOWN IN DETAILS.
- ALL TREES SHALL BE STAKED IF DEEMED NECESSARY AND WRAPPED AT THE END OF THE GROWING SEASON.
- LANDSCAPE BID TO INCLUDE A COMPLETE LAWN IRRIGATION SYSTEM AS REQUIRED.



LANDSCAPE PLAN NORTH
SCALE: 1" = 20'
PRINT @ 24 X 36



www.htg-architects.com

8300 Hennepin Town Road
Eden Prairie, MN 55347
Tel: 952.278.8880 Fax: 952.278.8822
COPYRIGHT © 2008 by HTG Architects

PROJECT

CONQUEST DEVELOPMENT

NEW BUILDING

RAPID CITY, SOUTH DAKOTA

ISSUED SET	03-25-08 PLANNING SUBMITTAL
REVISIONS	
DATE	NO

MARKELL ~
LABELEE DESIGN GROUP
16 BRENTWOOD AVENUE
EDGEWOOD, MN 55331
TEL: 612-224-8253
FAX: 612-474-6156

I HEREBY CERTIFY THAT THIS PLAN SPECIFICATION OR REPORT WAS PREPARED BY ME OR UNDER MY DIRECT SUPERVISION AND THAT I AM A duly LICENSED ARCHITECT UNDER THE LAWS OF THE STATE OF SOUTH DAKOTA.

DESIGNED BY: JPK
CHECKED BY: JML
DATE: 08/10/08

DRAWN BY: JPK CHECKED BY: JML