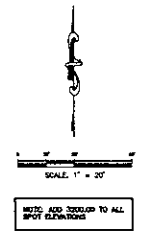
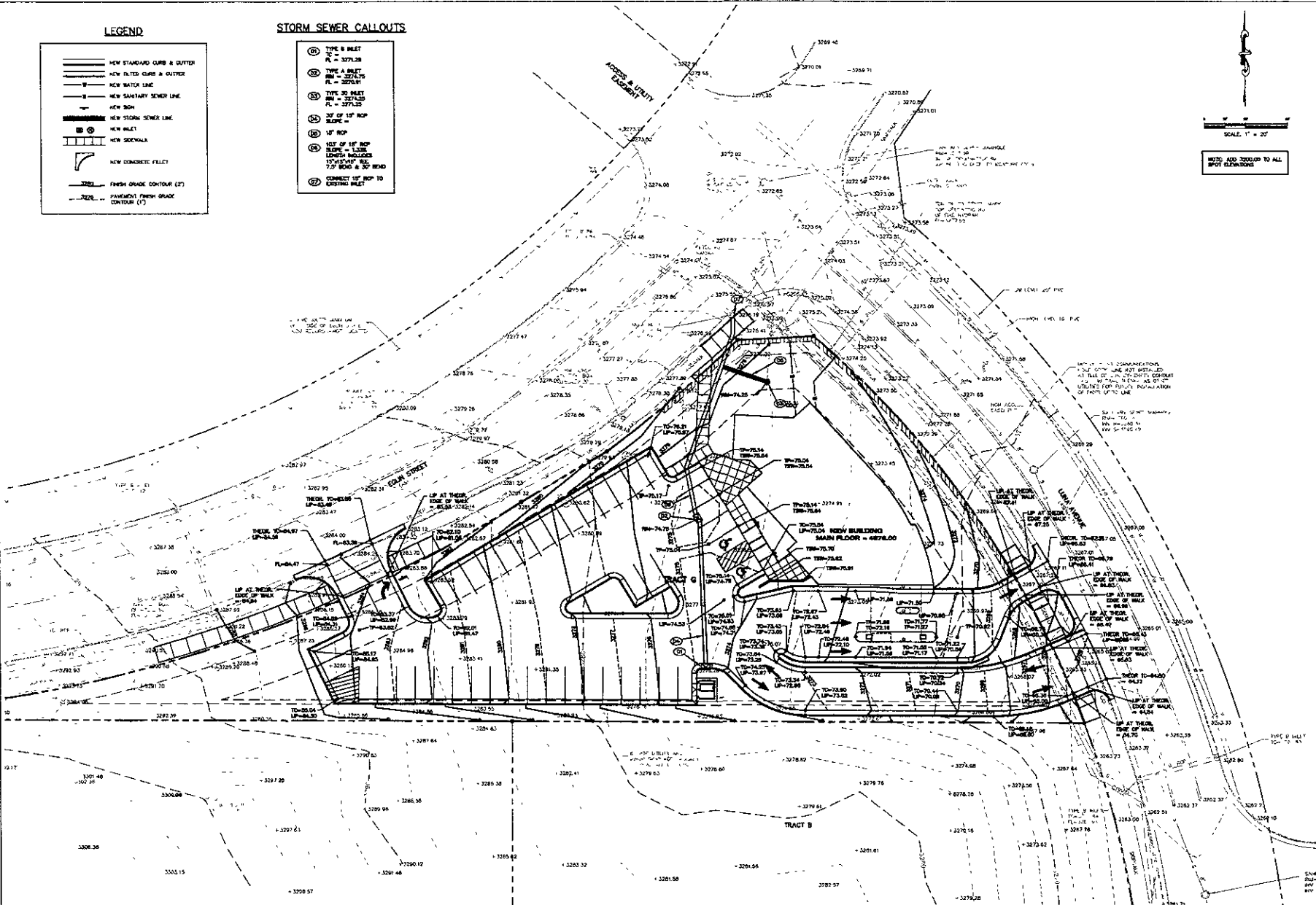


LEGEND

	NEW STANDARD CURB & GUTTER
	NEW FILTERED CURB & GUTTER
	NEW WATER LINE
	NEW SANITARY SEWER LINE
	NEW SIDEWALK
	NEW STORM SEWER LINE
	NEW MANHOLE
	NEW SIDEWALK
	NEW CONCRETE FLEET
	FINISH GRADE CONTOUR (F)
	PAVEMENT FINISH GRADE CONTOUR (P)

STORM SEWER CALLOUTS

	TYPE B INLET TO R = 3275.38
	TYPE A INLET TO R = 3274.75 R = 3270.91
	TYPE 30 INLET TO R = 3275.25
	30" OF 18" ROP SLOPE =
	18" ROP
	10" OF 18" ROP SLOPE = 1.25% LENGTH INCLUDES 15" OF 18" ROP 7.5' ROAD & 30' WID
	CONNECT 18" ROP TO EXISTING INLET



FMG, Inc.
 3700 Bourke Road
 Rapid City, SD 57702-4517
 (605) 394-1100 FAX (605) 348-4228

NOT FOR CONSTRUCTION

File Number:	090018
Location:	SEA/SECTION 30
TOTAL SHEETS:	30
DATE:	FEBRUARY 2009
Designed by:	CS/MLC
Drawn by:	CS/MLC
Checked by:	JOB

**CONQUEST DEVELOPMENT
 NEW BUILDING
 RAPID CITY, SD**

Revision / Date	
Drawn Name	
GRADING PLAN	
Sheet Number	C3 of C5