



www.htg-architects.com

9300 Hennepin Town Road  
Eden Prairie, MN 55347  
Tel: 952.278.8880 Fax: 952.278.8622  
COPYRIGHT © 2009 by HTG Architects

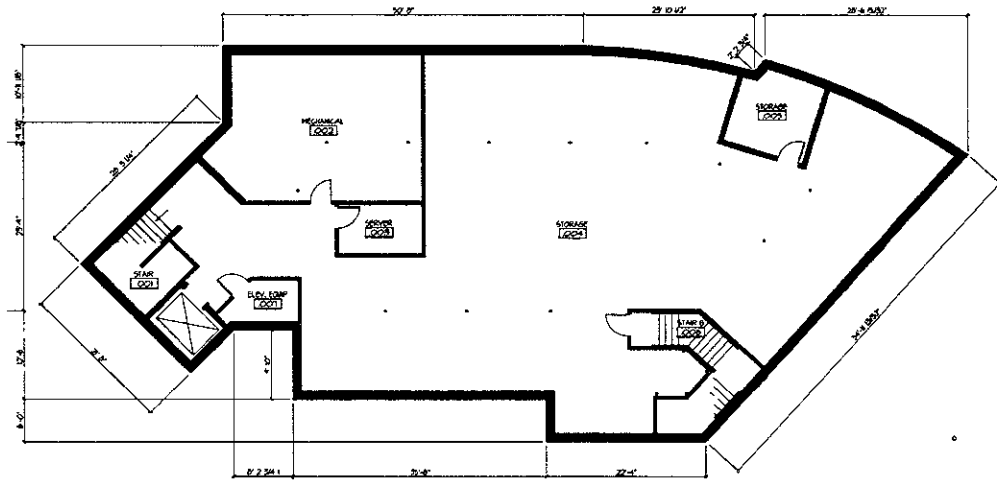
PROJECT

**CONQUEST  
DEVELOPMENT**

**NEW BUILDING**

**RAPID CITY, SOUTH DAKOTA**

ISSUED SET: 03-25-09 PLANNING SUBMITTAL	
REVISIONS	
DATE	NO.



I HEREBY CERTIFY THAT THIS PLAN  
SPECIFICATION OR REPORT WAS PREPARED BY  
ME OR UNDER MY DIRECT SUPERVISION AND  
THAT I AM A DULY LICENSED ARCHITECT  
UNDER THE LAWS OF THE STATE OF  
SOUTH DAKOTA

JEFFREY J. RYLANDER  
ARCHITECT

LOWER LEVEL PLAN

LOWER LEVEL PLAN  
1/8" = 1'-0"



DRAWN BY: XXX CHECKED BY: XXX

**A2.1**



www.htg-architects.com

9300 Hennepin Town Road  
Eden Prairie, MN 55347  
Tel: 952.278.8880 Fax: 952.278.8822  
COPYRIGHT © 2008 by HTG Architects

PROJECT

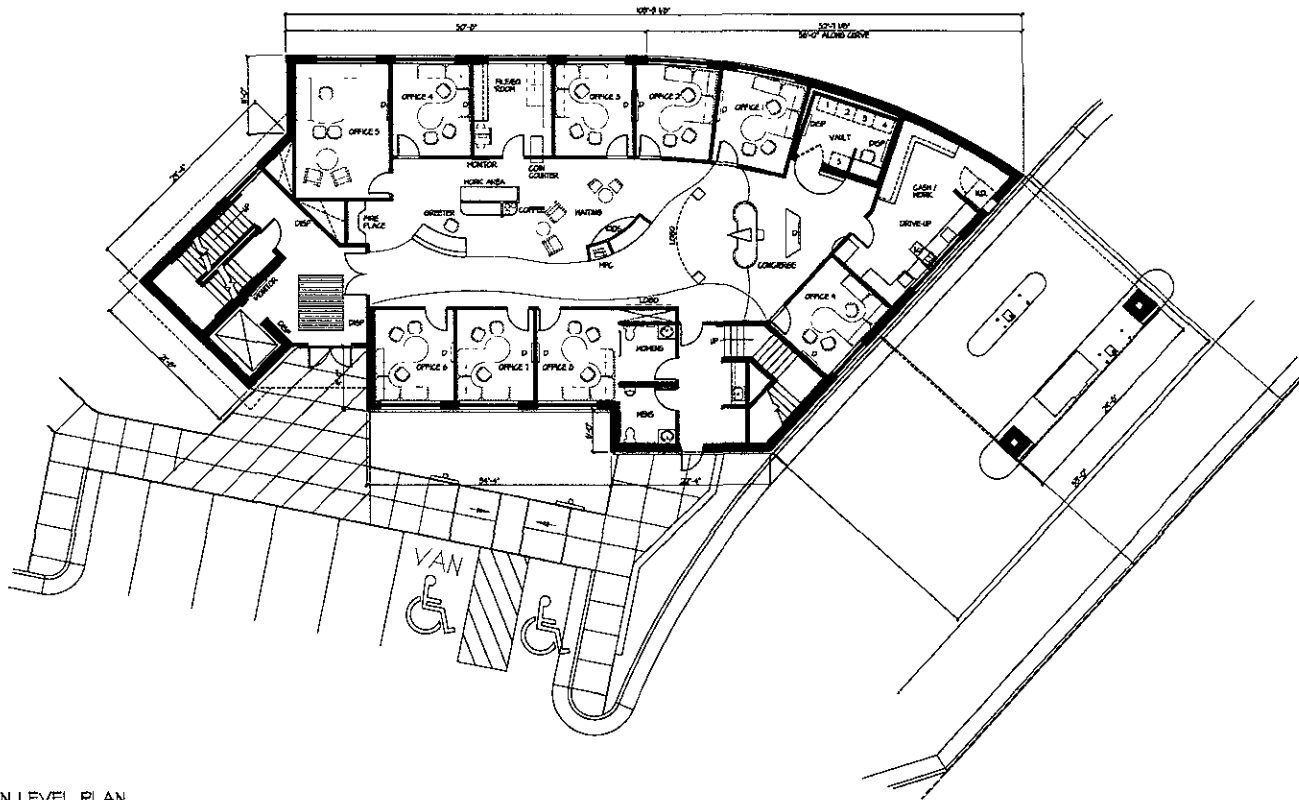
CONQUEST  
DEVELOPMENT

NEW BUILDING

RAPID CITY, SOUTH DAKOTA

ISSUED SET 03-25-08 PLANNING SUBMITTAL  
REVISIONS

DATE	NO



I HEREBY CERTIFY THAT THIS PLAN, SPECIFICATION OR REPORT WAS PREPARED BY ME OR UNDER MY DIRECT SUPERVISION AND THAT I AM A DULY LICENSED ARCHITECT UNDER THE LAWS OF THE STATE OF SOUTH DAKOTA.

JEFFREY J. PHILLIPSON  
S  
REG. NO. DATE

MAIN LEVEL PLAN

DRAWN BY: XXX CHECKED BY: XXX

A2.2





www.htg-architects.com

9300 Hennepin Town Road  
Eden Prairie, MN 55347  
Tel: 952.278.8880 Fax: 952.278.8822  
COPYRIGHT © 2009 by HTG Architects

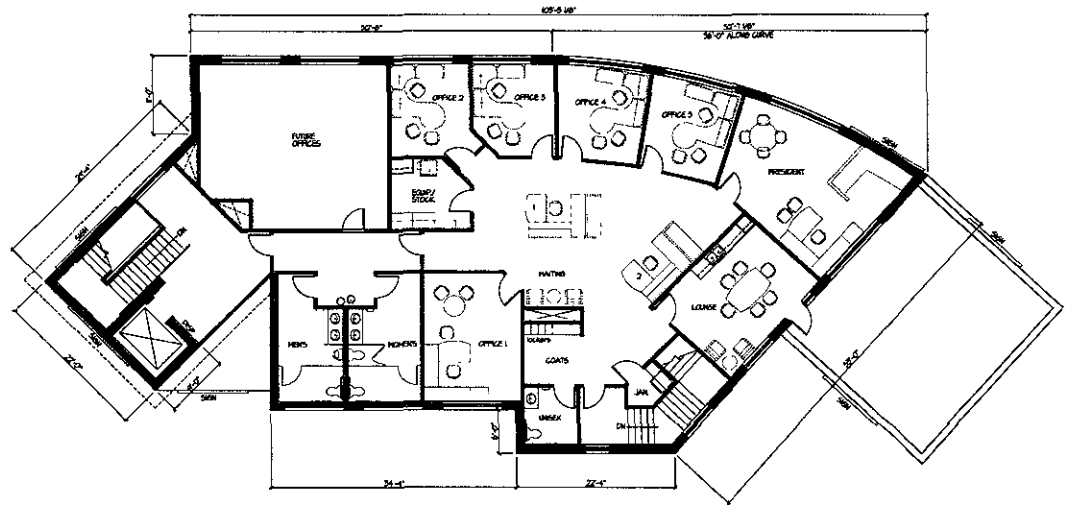
PROJECT

# CONQUEST DEVELOPMENT

## NEW BUILDING

RAPID CITY, SOUTH DAKOTA

ISSUED SET	23-25-09 PLANNING SUBMITTAL
REVISIONS	
DATE	NO



I HEREBY CERTIFY THAT THIS PLAN, SPECIFICATION OR REPORT WAS PREPARED BY ME OR UNDER MY DIRECT SUPERVISION, AND THAT I AM A DULY LICENSED ARCHITECT UNDER THE LAWS OF THE STATE OF SOUTH DAKOTA.

JEFFREY J. PFLIPSCH  
R.C. No. \_\_\_\_\_ DATE \_\_\_\_\_

UPPER LEVEL PLAN

DRAWN BY: EMB CHECKED BY: RLL

# A2.3

1 UPPER LEVEL PLAN  
1/8"=1'-0"

