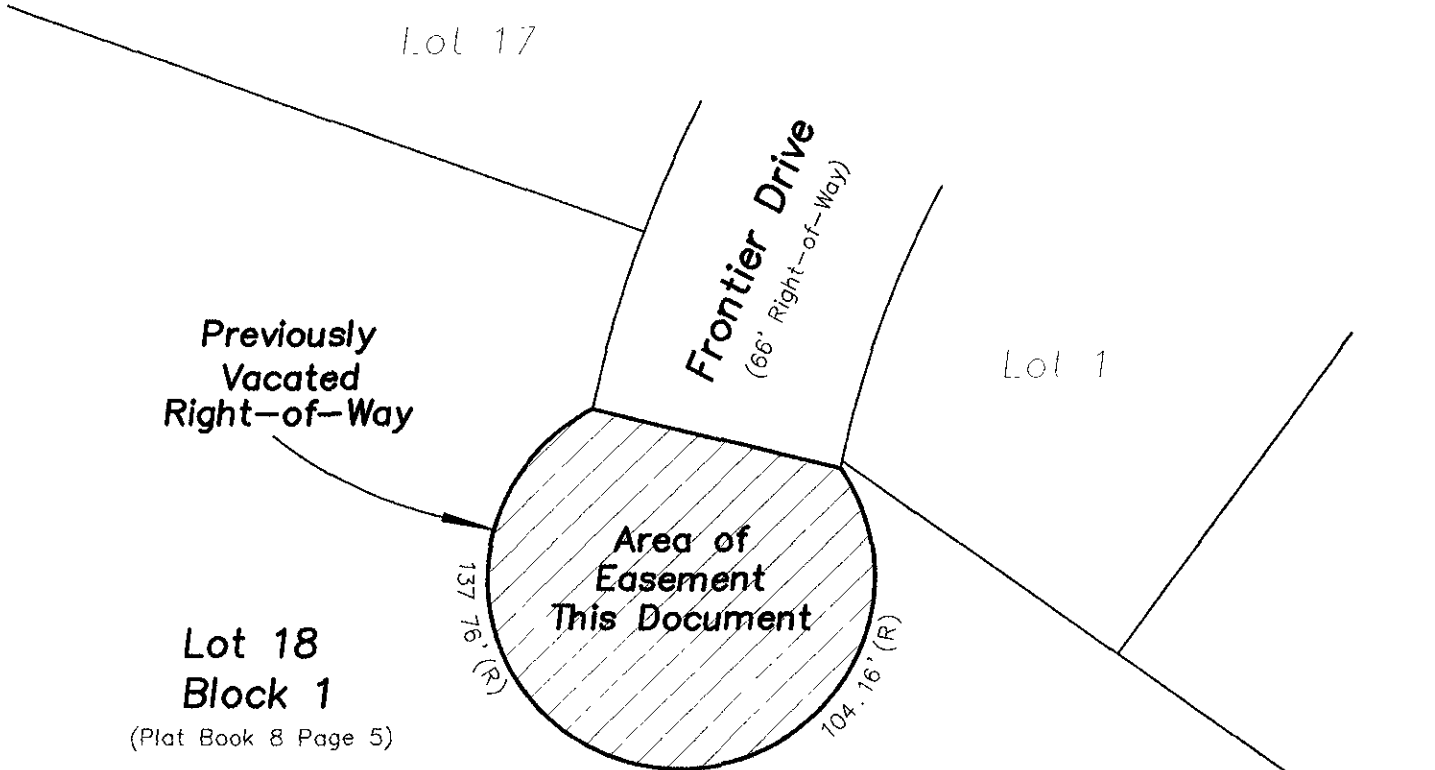


EXHIBIT A

UTILITY EASEMENT
LOCATED IN THE VACATED RIGHT-OF-WAY
ADJOINING LOT 18 IN BLOCK 1 AND
LOT 16 IN BLOCK 2 OF COUNTRY CLUB HEIGHTS
LOCATED IN THE NE1/4 SE1/4 OF SECTION 9, T1N, R7E, BHM,
RAPID CITY, PENNINGTON COUNTY, SOUTH DAKOTA



1"=50'



RECEIVED

MAY 29 2009

Rapid City Growth
Management Department

