

**HARTLAND COURT COMPUTED ALIGNMENT**

PI#	STATION	NORTHING	EASTING	ANGLE	DIS TANCE (FT)
BOP	1+50.0	84509.82	115522.00	SE21 442085	105.07
1	2+05.1	84588.22	1195660.92	SE22 441478	8.46
2	2+56.5	84571.76	1195680.81	SE34 271582	161.28
3	4+ 7.8	84563.04	1195972.44	NE40 380804	97.29
4	4+47.5	84572.87	1196225.50	NE26.3 1507	56.85
5	5+5+5	84566.81	1196096.80	NE78 494786	176.76
6	7+07	84585.02	1196284.05	NE25 09241	73.87
7	7+75.0	84590.58	1196285.45	NE56 573835	58.28
EOP	6+22.2	84593.66	1196354.31		

**PI# 3 CURVE DATA**

STATION	NORTHING	EASTING
PC 3+20.5	845739.10	1195917.17
PI 4+17.8	845659.04	1195972.44
PT 4+57.6	845732.87	1196035.80
LC =	104.443124	
Dc =	78.232974	
Da =	83.37427	
T =	73.41	
R =	200.00	
L =	140.71	
C =	137.82	
E =	118.80	
M =	47.84	
M =	29.21	

**PI# 5 CURVE DATA**

STATION	NORTHING	EASTING
PC 4+80.1	845750.18	1196056.09
PI 5+53.5	845808.81	1196095.80
PT 6+20.8	845819.77	1196169.05
LC =	26.38524	
Dc =	28.571809	
T =	73.41	
R =	200.00	
L =	140.71	
C =	137.82	
E =	13.05	
M =	12.25	

**PI# 7 CURVE DATA**

STATION	NORTHING	EASTING
PC 7+53.7	845882.54	1196276.37
PI 7+75.0	845901.98	1196291.45
PT 7+95.3	845913.53	1196303.38
LC =	31.481424	
Dc =	35.223914	
Da =	83.371427	
T =	21.37	
R =	75.00	
L =	41.63	
C =	41.10	
E =	2.98	
M =	2.87	

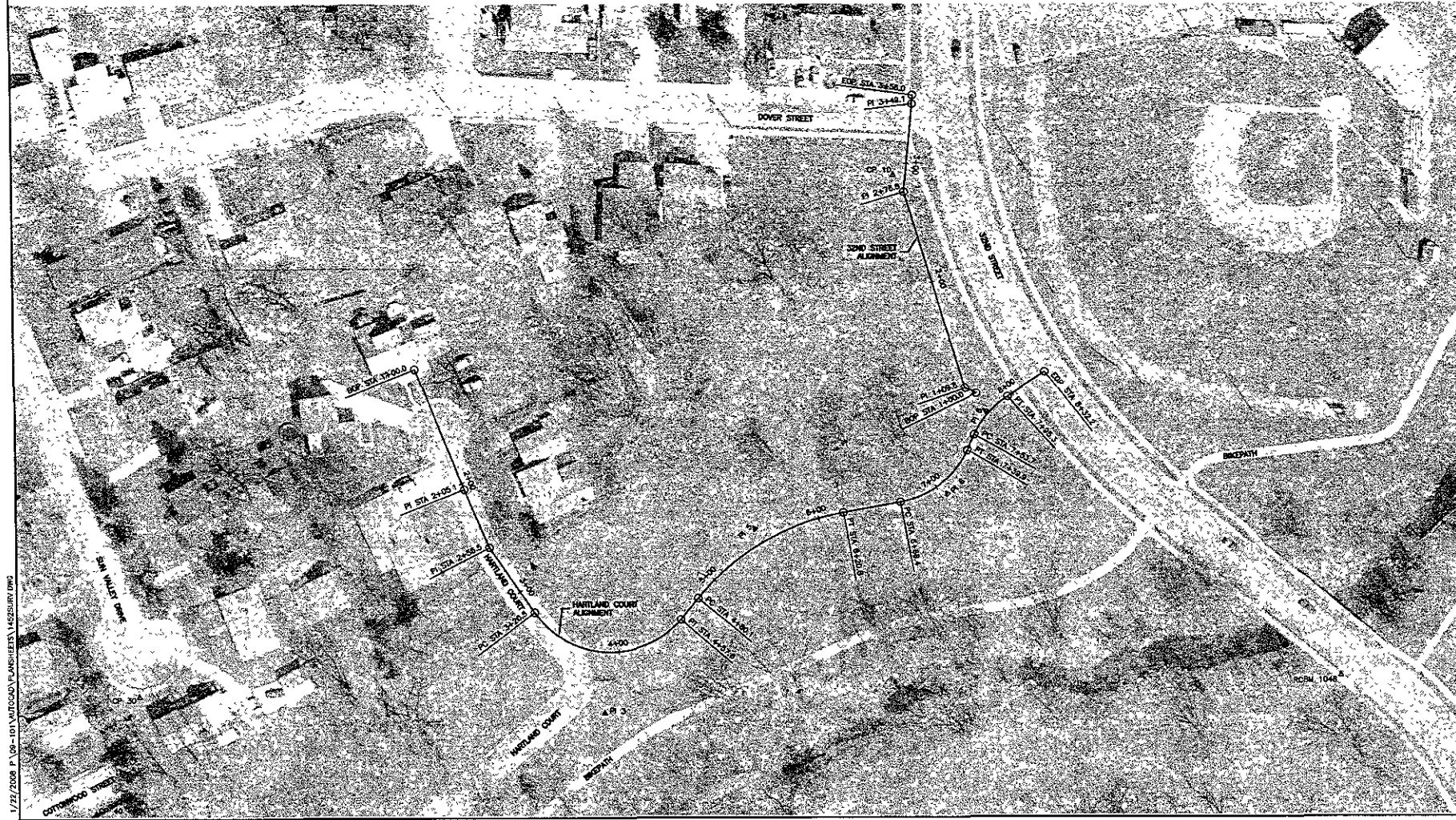
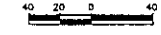
**32ND STREET COMPUTED ALIGNMENT**

PI#	STATION	NORTHING	EASTING	ANGLE	DISTANCE (FT)
BOP	1+03.3	845816.38	1196076.34	NW6 471702	8.75
1	1+02.8	845529.39	1195599.65	NW16 322329	152.02
2	2+78.8	845081.09	1196229.10	NES 70939	72.28
3	3+45.1	848452.00	1196229.39	NE3 194035	6.99
EOP	3+50.0	848139.98	1196229.79		

**CONTROL**

POINT NO	MONUMENTATION	NORTHING	EASTING	E.ELEVATION
10	SET 5.6" REBAR	846093.5	1196113.3*	3360.27
30	SET 5.6" REBAR	845871.47	1196552.19	3315.86
40	SET 1.5" REBAR	845976.03	1196561.90	33 6.40
RCBM 1048	RC BENCHMARK	845683.56	1196572.77	3305.19

COORDINATES SHOWN ARE BASED ON THE SOUTH DAKOTA STATE PLANE COORDINATE SYSTEM SOUTH ZONE NAD 83(96)  
ELEVATIONS ARE BASED ON NGVD 29



Prepared by: Public Works Department  
 Date: 1/22/2008  
 Project: DOVER STREET DRAINAGE IMPROVEMENTS  
 Phase: PHASE I - HARTLAND COURT RELOCATION  
 Scale: AS SHOWN  
 Drawn by: DAL  
 Check by: DMS  
 Date: 1/22/2008  
 Project Date: 1/22/2008  
 Job No: 05-101  
 Survey Date: FEB 2005  
 Scale: AS SHOWN

**Ferber Engineering, Inc.**  
 1425 BROADWAY, SUITE 200, SIOUX FALLS, SD 57105  
 TEL: 605/336-1111 FAX: 605/336-1112  
 WWW.FERBERENGINEERING.COM

HORIZONTAL ALIGNMENT AND SURVEY CONTROL DATA  
 2 of 10