

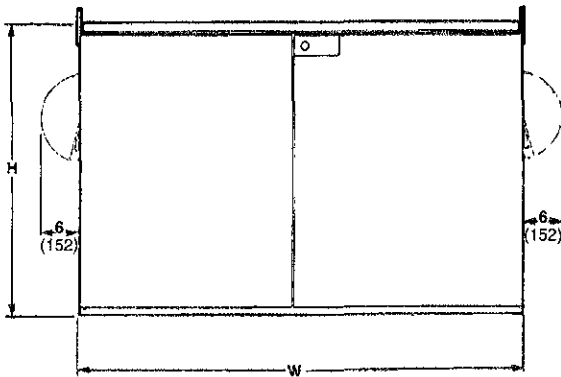
RECEIVED

MAR 27 2009

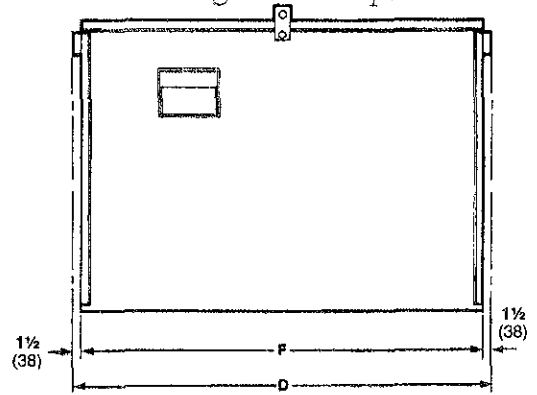
Rapid City Growth Management Department

**Model PMH-9**  
**14.4 kV and 25 kV Nominal**

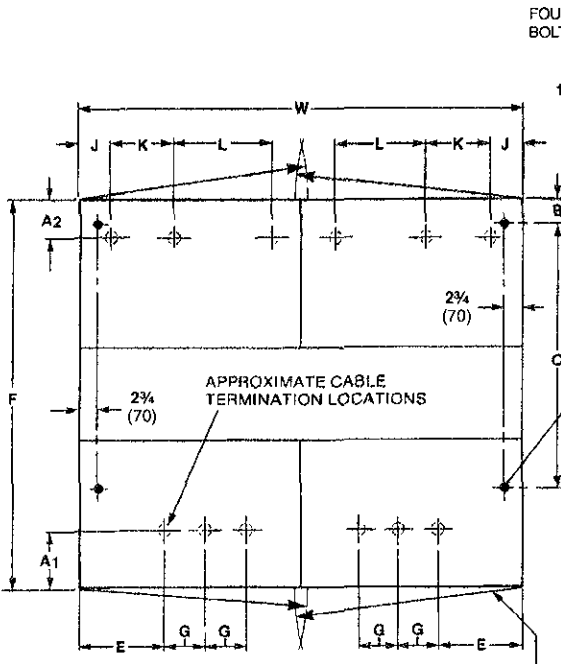
Dimensions in inches (mm)



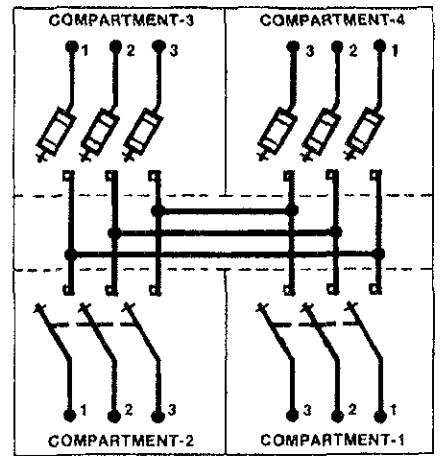
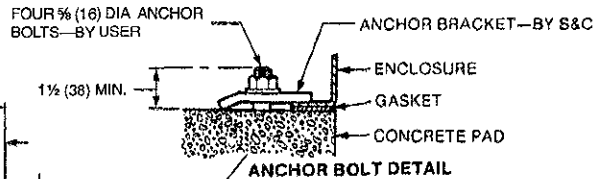
FRONT VIEW



SIDE VIEW



ANCHOR BOLT PLAN



CONNECTION DIAGRAM

kV, Nominal	A <sub>1</sub> ◆	A <sub>2</sub>	B	C	D	E	F	G	H	J	K	L	M	W
14.4	9 7/8 (251)	7 (178)	5 1/8 (130)	40 (1016)	63 3/4 (1619)	12 7/8 (327)	60 3/4 (1543)	6 (152)	44 (1118)	4 3/4 (121)	9 3/4 (248)	14 3/4 (375)	34 (864)	67 (1702)
25	14 1/8 (359)	11 1/4 (286)	7 1/8 (181)	62 1/2 (1588)	79 3/4 (2026)	13 3/4 (349)	76 3/4 (1949)	7 1/2 (191)	55 (1397)	6 (152)	12 1/2 (318)	16 1/2 (419)	41 1/2 (1054)	82 (2083)

◆ When Catalog Number Suffix "-M1," "-U2," or "-U3" is specified, cable-termination locations will be slightly affected. Consult your nearest S&C Sales Office for details.