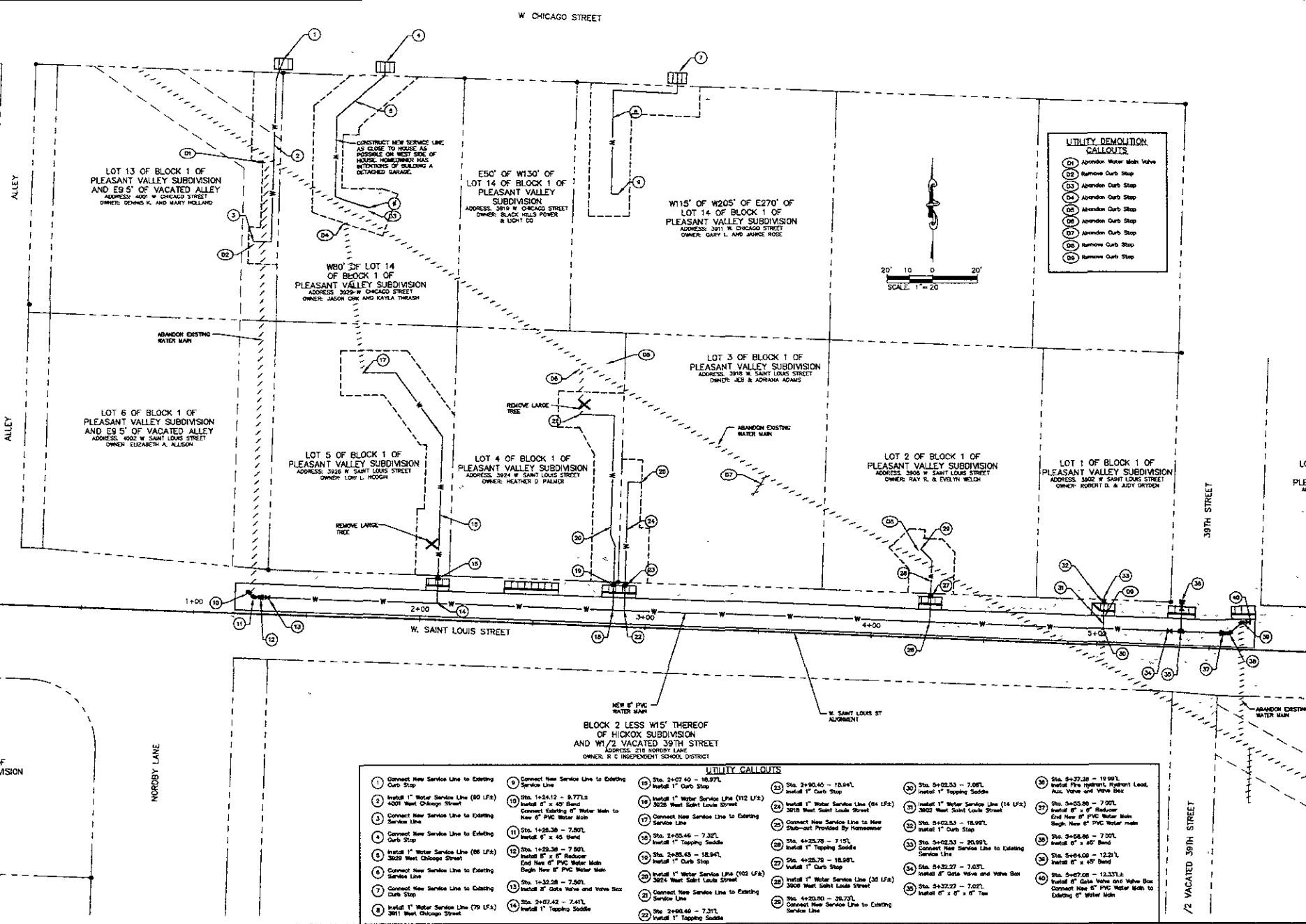



98 W. Chicago Water Main dwg. 3, 5/7/2009 2:03:04 PM



UTILITY DEMOLITION CALLOUTS	
01	Abandon Water Main Valve
02	Remove Curb Stop
03	Abandon Curb Stop
04	Abandon Curb Stop
05	Abandon Curb Stop
06	Abandon Curb Stop
07	Abandon Curb Stop
08	Remove Curb Stop
09	Remove Curb Stop

UTILITY CALLOUTS			
1	Connect New Service Line to Existing Curb Stop	10	Connect New Service Line to Existing Service Line
2	Install 1" Water Service Line (40 LF) 400' West Chicago Street	11	Sta. 1+54.12 - 8.77'L install 6" x 40' Band
3	Connect New Service Line to Existing Service Line	12	Connect Existing 8" Water Main to New 6" PVC Water Main
4	Connect New Service Line to Existing Curb Stop	13	Sta. 1+28.36 - 7.90'L install 6" x 45' Band
5	Install 1" Water Service Line (66 LF) 300' West Chicago Street	14	Sta. 1+22.36 - 7.80'L install 6" x 6" Reducer End New 6" PVC Water Main
6	Connect New Service Line to Existing Service Line	15	Sta. 1+32.28 - 7.90'L install 6" Gate Valve and Valve Box
7	Connect New Service Line to Existing Curb Stop	16	Sta. 2+07.42 - 7.41'L install 1" Topping Saddle
8	Install 1" Water Service Line (79 LF) 381' West Chicago Street	17	Sta. 2+07.40 - 18.97'L install 1" Curb Stop
9	Connect New Service Line to Existing Service Line	18	Sta. 1+54.12 - 8.77'L install 1" Water Service Line (112 LF) 202' West Chicago Street
10	Connect New Service Line to Existing Service Line	19	Sta. 2+25.46 - 7.32'L install 1" Topping Saddle
11	Sta. 1+28.36 - 7.90'L install 6" x 45' Band	20	Connect New Service Line to New Stub-out Provided by Homeowner
12	Connect Existing 8" Water Main to New 6" PVC Water Main	21	Sta. 4+25.78 - 7.10'L install 1" Topping Saddle
13	Sta. 1+22.36 - 7.80'L install 6" x 6" Reducer End New 6" PVC Water Main	22	Sta. 2+25.46 - 18.94'L install 1" Curb Stop
14	Sta. 1+32.28 - 7.90'L install 6" Gate Valve and Valve Box	23	Sta. 4+25.78 - 18.94'L install 1" Curb Stop
15	Sta. 2+07.42 - 7.41'L install 1" Topping Saddle	24	Sta. 4+25.78 - 7.03'L install 6" Gate Valve and Valve Box
16	Sta. 2+07.40 - 18.97'L install 1" Curb Stop	25	Sta. 4+37.22 - 7.02'L install 6" x 6" x 6" Tee
17	Connect New Service Line to Existing Service Line	26	Sta. 5+02.53 - 7.00'L install 1" Topping Saddle
18	Sta. 1+54.12 - 8.77'L install 1" Water Service Line (112 LF) 202' West Chicago Street	27	Sta. 5+02.53 - 18.94'L install 1" Curb Stop
19	Sta. 2+25.46 - 7.32'L install 1" Topping Saddle	28	Connect New Service Line to Existing Service Line
20	Connect New Service Line to New Stub-out Provided by Homeowner	29	Sta. 5+42.53 - 30.90'L install 1" Topping Saddle
21	Sta. 4+25.78 - 7.10'L install 1" Topping Saddle	30	Sta. 5+42.53 - 18.94'L install 1" Curb Stop
22	Sta. 2+25.46 - 18.94'L install 1" Curb Stop	31	Connect New Service Line to Existing Service Line
23	Sta. 4+25.78 - 18.94'L install 1" Curb Stop	32	Sta. 5+42.53 - 7.00'L install 6" Gate Valve and Valve Box
24	Sta. 4+25.78 - 7.03'L install 6" Gate Valve and Valve Box	33	Sta. 5+42.53 - 12.21'L install 6" x 40' Band
25	Sta. 4+37.22 - 7.02'L install 6" x 6" x 6" Tee	34	Sta. 5+42.53 - 12.21'L install 6" x 40' Band
26	Sta. 5+02.53 - 7.00'L install 1" Topping Saddle	35	Sta. 5+42.53 - 12.21'L install 6" x 40' Band
27	Sta. 5+02.53 - 18.94'L install 1" Curb Stop	36	Sta. 5+42.53 - 12.21'L install 6" x 40' Band
28	Connect New Service Line to Existing Service Line		
29	Sta. 5+42.53 - 30.90'L install 1" Topping Saddle		
30	Sta. 5+42.53 - 18.94'L install 1" Curb Stop		
31	Connect New Service Line to Existing Service Line		
32	Sta. 5+42.53 - 7.00'L install 6" Gate Valve and Valve Box		
33	Sta. 5+42.53 - 12.21'L install 6" x 40' Band		
34	Sta. 5+42.53 - 12.21'L install 6" x 40' Band		
35	Sta. 5+42.53 - 12.21'L install 6" x 40' Band		
36	Sta. 5+42.53 - 12.21'L install 6" x 40' Band		



**F.M.G. Inc.**  
 2700 Riverside Road  
 Naperville, IL 60563-0317  
 (630) 942-5103 FAX (630) 942-4822  
[www.fmgengineering.com](http://www.fmgengineering.com)

---

Project: **WEST CHICAGO AREA WATER MAIN RECONSTRUCTION**

Scale: 1"=20'

Designed by: **CGK/JKS** Drawn by: **CGK/JKS**  
 Design Date: **MAY 2009** Print Date: **MAY 2009**  
 Worksheet No: **082004**

Checked by: **F.M.G.** Survey Date: **1/09-3/09**

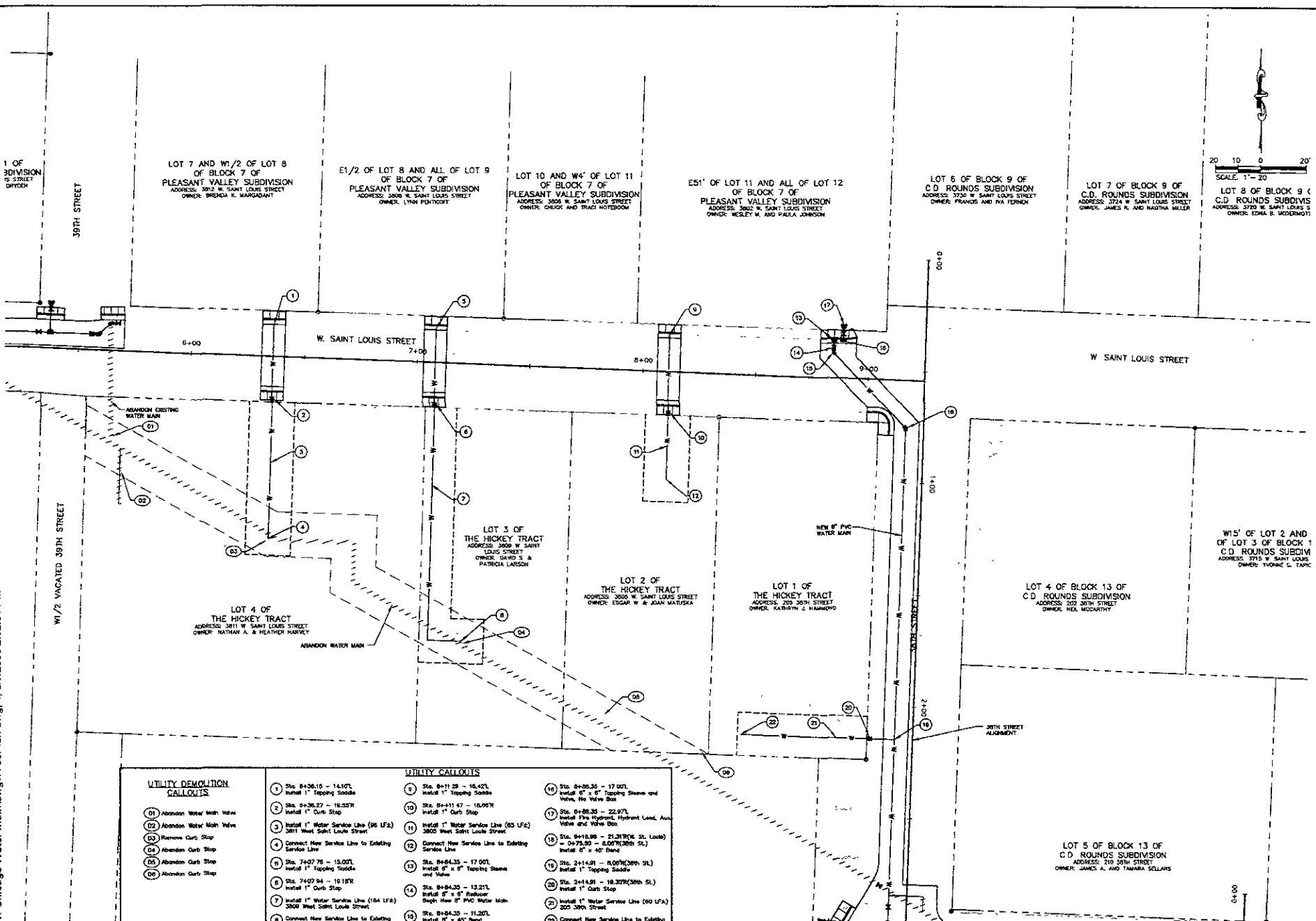
Revisions:

---

Sheet Title: **PLAN**

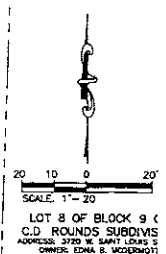
Block: **17 of 31**

88 W. Chicago Water Main dwg 1763 Plan dwg. 4. 5/7/2009 2:02:51 PM



UTILITY DEMOLITION CALLOUTS	
(01)	Abandon Water Main Valve
(02)	Abandon Water Main Valve
(03)	Remove Curb Stop
(04)	Abandon Curb Stop
(05)	Abandon Curb Stop
(06)	Abandon Curb Stop

UTILITY CALLOUTS			
1	Sta. 6+36.10 - 14.07 Install 1" Tapping Saddle	14	Sta. 8+36.35 - 17.07 Install 8" x 6" Tapping Sleeve and Valve, No Valve Box
2	Sta. 6+36.27 - 15.55R Install 1" Curb Stop	17	Sta. 9+38.35 - 22.97 Install Fire Hydrant, Hydrant Lead, Valve and Valve Box
3	Install 1" Water Service Line (86 LFA) 3811 West Saint Louis Street	18	Sta. 9+15.95 - 21.31R (W. St. Louis) = 0+75.50 - 8.00R (30th St.) Install 8" x 40' Bend
4	Connect New Service Line to Existing Service Line	19	Sta. 2+14.81 - 18.30R (30th St.) Install 1" Tapping Saddle
5	Sta. 7+07.75 - 15.00L Install 1" Tapping Saddle	20	Sta. 2+14.81 - 18.30R (30th St.) Install 1" Curb Stop
6	Sta. 7+07.84 - 15.15R Install 1" Curb Stop	21	Install 1" Water Service Line (80 LFA) 800-30th Street
7	Install 1" Water Service Line (104 LFA) 3809 West Saint Louis Street	22	Connect New Service Line to Existing Service Line
8	Sta. 8+84.35 - 11.20L Install 8" x 40' Bend		
9	Sta. 8+11.59 - 15.42L Install 1" Tapping Saddle		
10	Sta. 8+11.47 - 15.06R Install 1" Curb Stop		
11	Install 1" Water Service Line (85 LFA) 3605 West Saint Louis Street		
12	Connect New Service Line to Existing Service Line		
13	Sta. 8+84.35 - 17.00L Install 8" x 6" Tapping Sleeve and Valve		
14	Sta. 8+84.35 - 13.21L Install 8" x 6" Firehydrant Depth New 8" PVC Water Main		
15	Sta. 8+84.35 - 11.20L Install 8" x 40' Bend		



**F.M.G., Inc.**  
 3700 Burling Road  
 Chicago, IL 60631  
 (630) 342-1038 FAX (630) 348-4222  
 www.fmgengineering.com

---

**PRELIMINARY  
NOT FOR  
CONSTRUCTION**

---

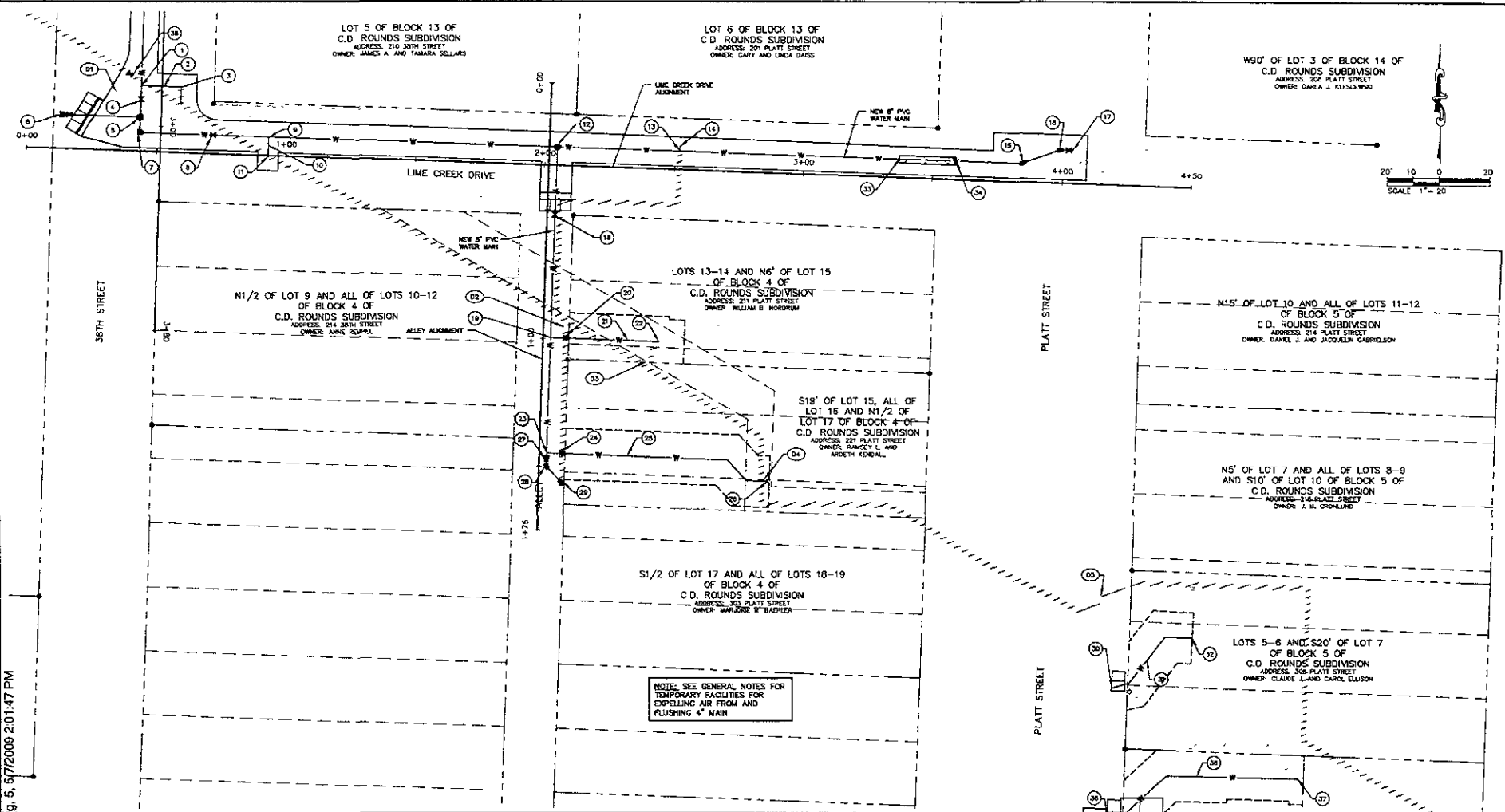
Scale:	1"=20'
Designed by:	CK/JKMS
Design Date:	May 2009
Checked by:	CK/JKMS
Reviewed by:	1/09-300

---

**WEST CHICAGO AREA  
WATER MAIN RECONSTRUCTION**

---

Sheet Title: **PLAN**  
 Sheet: **18 of 31**




NOTE: SEE GENERAL NOTES FOR TEMPORARY FACILITIES FOR EXPELLING AIR FROM AND FLUSHING 4" MAIN


**UTILITY DEMOLITION CALLOUTS**

- 01 Abandon Water Main Valve
- 02 Abandon Water Main Valve
- 03 Abandon Curb Stop
- 04 Abandon Curb Stop
- 05 Abandon Water Main Valve

- |   |
|---|
| <ul style="list-style-type: none"> <li>01 Sta. 2+04.14 - 5.067(30th St.) Install 1" Topping Saddle</li> <li>02 Install 1" Water Service Line (8 L/A) 210 30th Street</li> <li>03 Connect New Service Line to Existing Service Line Existing Curb Stop to be Removed</li> <li>04 Sta. 2+05.50 - 8.007(30th St.) Install 8" x 8" Tee</li> <li>05 Sta. 2+06.70 - 8.007(30th St.) Install 8" x 8" Tee</li> <li>06 Sta. 2+06.70 - 37.807(30th St.) Install 12" Hydrant, Hydrant Lead, Air Valve and Valve Box</li> <li>07 Sta. 3+02.70 - 8.007(30th St.) - 0+44.25 - 7.287(Lime Creek) Install 8" x 40" Bend</li> <li>08 Sta. 0+71.55 - 7.287(Lime Creek) Install 8" Gate Valve and Valve Box</li> <li>09 Sta. 0+92.80 - 7.287(Lime Creek) Install 1" Topping Saddle</li> <li>10 Install 1" Water Service Line (8 L/A) 214 30th Street</li> <li>11 Connect New Service Line to Existing Service Line Existing Curb Stop to be Removed</li> <li>12 Sta. 2+04.64 - 7.277(Lime Creek) Install 8" x 8" Tee</li> <li>13 Sta. 2+05.83 - 7.287(Lime Creek) Install 1" Topping Saddle</li> <li>14 Install 1" Water Service Line (2 L/A) Connect New Service Line to Existing Service Line Existing Curb Stop to be Removed 201 Platt Street</li> <li>15 Sta. 3+06.00 - 7.287(Lime Creek) Install 1" Topping Saddle</li> <li>16 Sta. 3+06.70 - 11.107(Lime Creek) Install 8" x 22.5" Bend</li> <li>17 Sta. 4+03.70 - 13.107(Lime Creek) Install 12" x 12" x 8" Topping Saddle, Gate Valve and Valve Box</li> <li>18 Sta. 0+35.00 - 3.007(Alley) Install 8" Gate Valve and Valve Box</li> <li>19 Sta. 0+09.90 - 2.907(Alley) Install 1" Topping Saddle</li> <li>20 Sta. 0+09.81 - 8.907(Alley) Install 1" Curb Stop</li> <li>21 Install 1" Water Service Line (4 L/A) 201 Platt Street</li> <li>22 Connect New Service Line to Existing Service Line</li> <li>23 Sta. 1+44.80 - 2.817(Alley) Install 1" Topping Saddle</li> <li>24 Sta. 1+44.80 - 8.907(Alley) Install 1" Curb Stop</li> <li>25 Install 1" Water Service Line (82 L/A) 221 Platt Street</li> <li>26 Connect New Service Line to Existing Service Line</li> <li>27 Sta. 1+47.00 - 2.817(Alley) Install 8" x 4" Tee</li> <li>28 Sta. 0+09.90 - 2.907(Alley) Install 4" x 45" Bend</li> <li>29 Sta. 1+06.06 - 8.837(Alley) Install 4" x 40" Bend</li> <li>30 Connect New Service Line to Existing Water Main</li> <li>31 Connect New Service Line to Existing Curb Stop</li> <li>32 Install 1" Water Service Line (4 L/A) 308 Platt Street</li> <li>33 Connect New Service Line to New 4" Main Provided by Homeowner</li> <li>34 Sta. 3+37.02 - 7.287(Lime Creek) Begin Concrete Water Main Encasement</li> <li>35 Sta. 3+35.04 - 7.287(Lime Creek) End Concrete Water Main Encasement</li> <li>36 Connect New Service Line to Existing Curb Stop</li> <li>37 Install 1" Water Service Line (82 L/A) 3632 W. Grosholz Street</li> <li>38 Connect New Service Line to Existing Service Line</li> <li>39 Sta. 2+79.85 - 12.407(30th Street) Cut in Temporary 10" Gate Valve and Box on Existing 10" G. Main to be Used for Construction Sequencing. At End of Project and Before Paving, Close Valve and Remove Valve Box.</li> </ul> |
|---|



Received For: Public Works Department  
Engineering Division



**F M G, Inc.**  
3700 Burgis Road  
Naperville, IL 60563  
(630) 351-6000  
www.fmginc.com

PRELIMINARY  
NOT FOR  
CONSTRUCTION

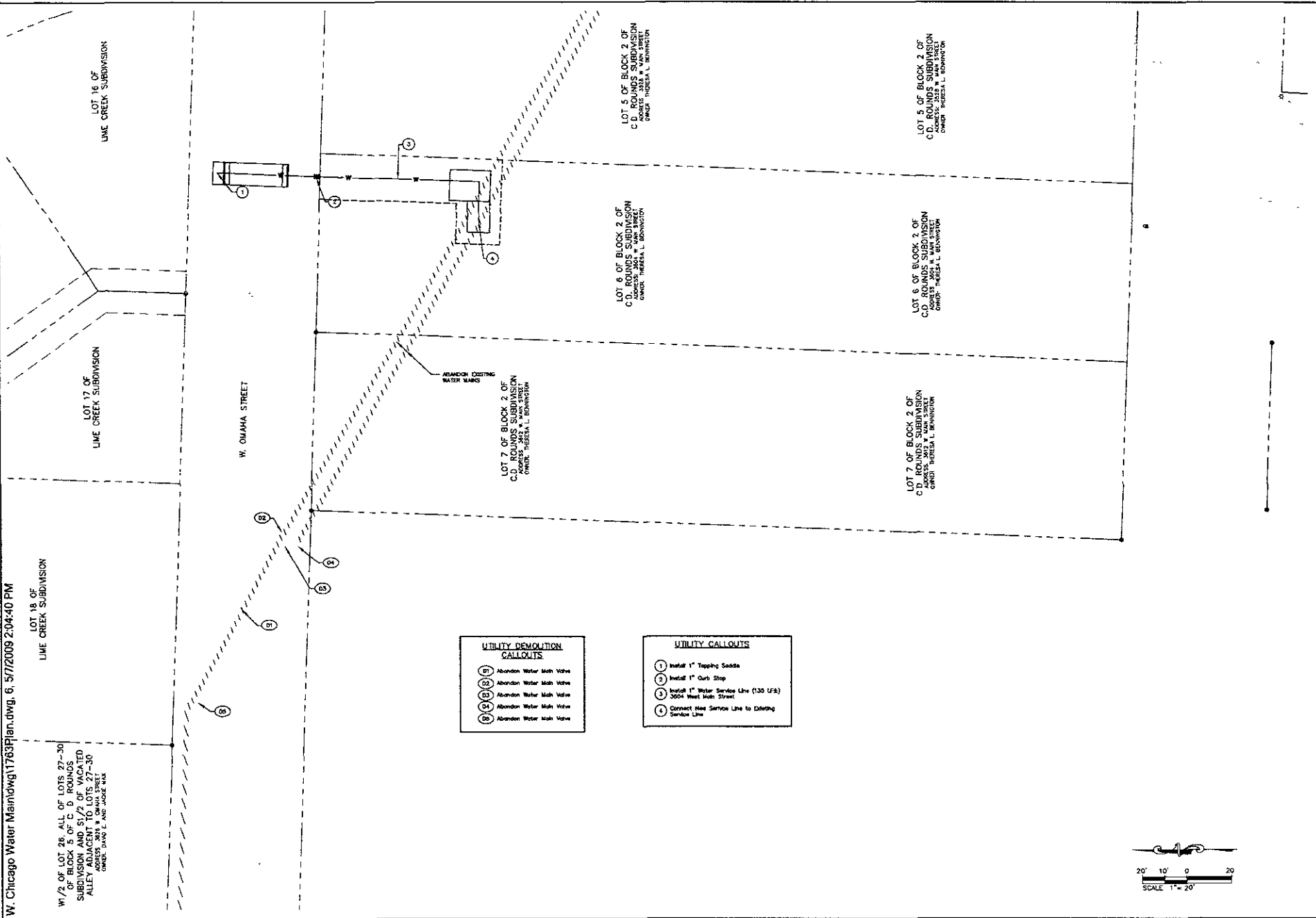
Scale: 1"=20'

Designed By: CORNACIO  
Checked By: CRUJEKIS  
Design Date: MAY 2009  
Issue Date: MAY 2009  
Approval Job No: 0550008  
Submitted By: TMO  
Survey Date: 1/05-3/05

WEST CHICAGO AREA  
WATER MAIN RECONSTRUCTION

Sheet Title: PLAN  
Sheet: 19 of 31

W. Chicago Water Main.dwg, 6/3/2009 2:04:40 PM



W/2 OF LOT 26, ALL OF LOTS 27-30 OF BLOCK 5 OF C. D. ROUNDS SUBDIVISION AND S1/2 OF VACATED ALLEY ADJACENT TO LOTS 27-30 OWNED BY DAVE L. AND JACKIE WAX

W. OMAHA STREET

- UTILITY DEMOLITION CALLOUTS**
- 7 Abandon Water Main Valve
  - 8 Abandon Water Main Valve
  - 9 Abandon Water Main Valve
  - 10 Abandon Water Main Valve

- UTILITY CALLOUTS**
- 1 Install 1" Tapping Saddle
  - 2 Install 1" Curb Stop
  - 3 Install 1" Water Service Line (130 LFB) 5004 West Main Street
  - 4 Connect New Service Line to Existing Service Line

LOT 7 OF BLOCK 2 OF C.D. ROUNDS SUBDIVISION ADDRESS: 3512 W. OMAHA STREET OWNER: TERESA L. BENVENUTO

LOT 6 OF BLOCK 2 OF C.D. ROUNDS SUBDIVISION ADDRESS: 3514 W. OMAHA STREET OWNER: TERESA L. BENVENUTO

LOT 5 OF BLOCK 2 OF C.D. ROUNDS SUBDIVISION ADDRESS: 3516 W. OMAHA STREET OWNER: TERESA L. BENVENUTO

LOT 7 OF BLOCK 2 OF C.D. ROUNDS SUBDIVISION ADDRESS: 3518 W. OMAHA STREET OWNER: TERESA L. BENVENUTO

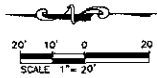
LOT 6 OF BLOCK 2 OF C.D. ROUNDS SUBDIVISION ADDRESS: 3520 W. OMAHA STREET OWNER: TERESA L. BENVENUTO

LOT 5 OF BLOCK 2 OF C.D. ROUNDS SUBDIVISION ADDRESS: 3522 W. OMAHA STREET OWNER: TERESA L. BENVENUTO

LOT 16 OF LIME CREEK SUBDIVISION

LOT 17 OF LIME CREEK SUBDIVISION

LOT 18 OF LIME CREEK SUBDIVISION



Project No. \_\_\_\_\_  
 Public Works Department  
 Engineering Division

**F M G, Inc.**  
 8740 Bluebell Road  
 Round Bay, MD 27702-0317  
 (603) 842-4105 FAX (603) 842-4828  
 www.fmgengineering.com

Prepared By:

**PRELIMINARY  
 NOT FOR  
 CONSTRUCTION**

Scale: 1"=20'

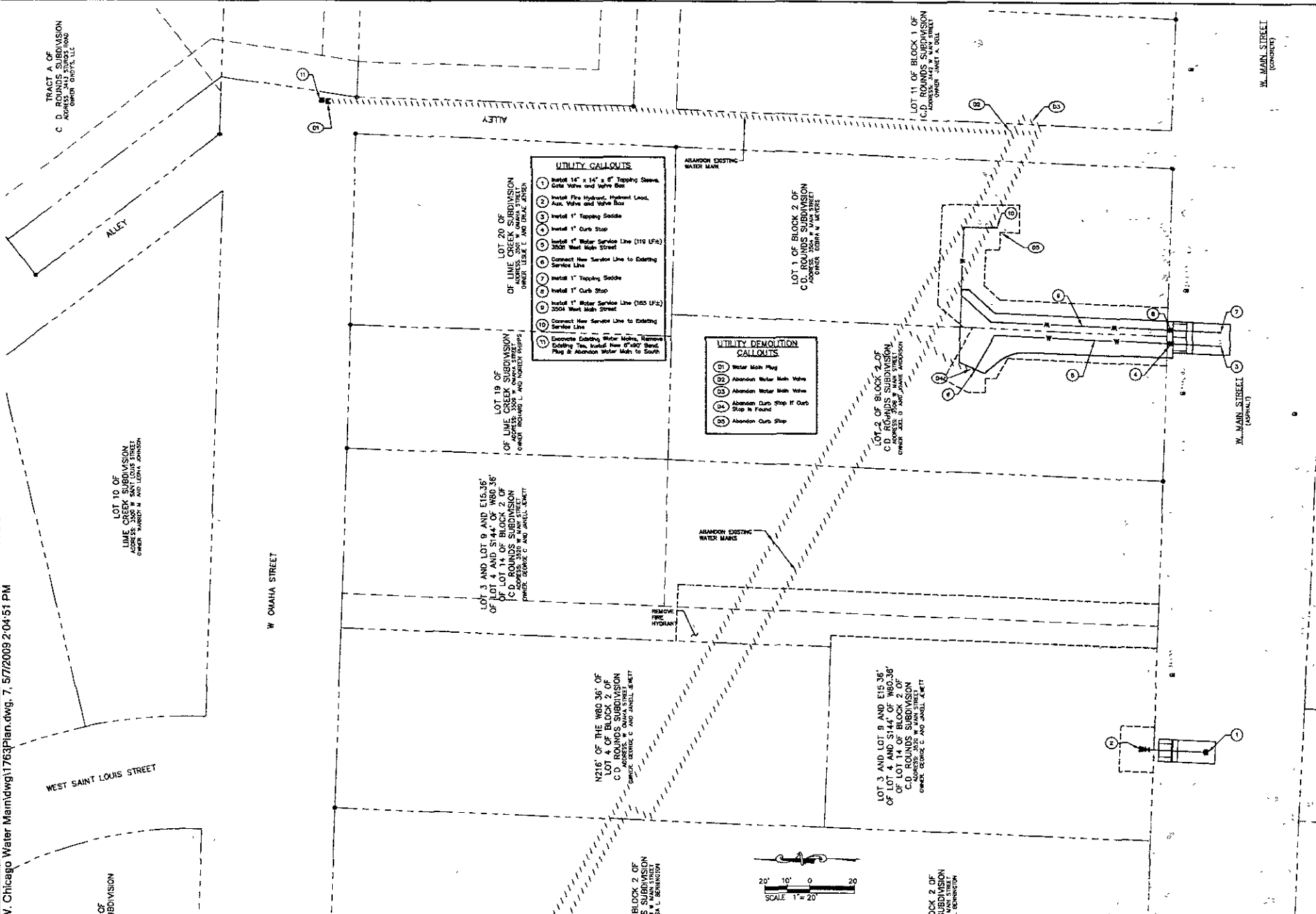
Designed By: CCK/AOP	Drawn By: CH/JKH/S
Checked By: MJK	Print Date: MAY 2009
Interim Job No: 089008	
Project No: FPM2	Quantity Date: 1/09-3/09
Revision:	

Sheet Title: **WEST CHICAGO AREA  
 WATER MAIN RECONSTRUCTION**

Sheet No: **20 of 31**

Drawn By: \_\_\_\_\_

Scale: 1" = 20'

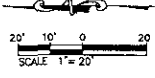



**UTILITY DEMOLITION  
CALLOUTS**


- (1) Water Main Plug
- (2) Abandon Water Main Valve
- (3) Abandon Water Main Valve
- (4) Abandon Curb Stop If Curb Stop is Found
- (5) Abandon Curb Stop

**UTILITY CALLOUTS**

- (1) Install 14" x 14" x 6" Tapping Sleeve, Gate Valve and Valve Box
- (2) Install Fire Hydrant, Flange End, Gate Valve and Valve Box
- (3) Install 1" Tapping Saddle
- (4) Install 1" Curb Stop
- (5) Install 1" Water Service Line (110 UFG) 3521 West Main Street
- (6) Connect New Service Line to Existing Service Line
- (7) Install 1" Tapping Saddle
- (8) Install 1" Curb Stop
- (9) Install 1" Water Service Line (115 UFG) 3504 West Main Street
- (10) Connect New Service Line to Existing Service Line
- (11) Concrete Existing Water Mains, Remove Existing Tap, Install New 6" x 60" Bend, Plug & Abandon Water Main to South



Project For:  Public Works Department  
**F M G, Inc.**  
 3700 Bunge Road 705-0917  
 (800) 342-4100 FAX (800) 342-4222  
 www.fmgengineering.com

Prepared By: 

**PRELIMINARY  
NOT FOR  
CONSTRUCTION**

Scale: 1"=20'

Designed By: COKIAUF CKUKOS  
 Design Date: MAY 2009  
 Drawn and Plotted: MAY 2009

Checked by: DBS008  
 Supplied by: F&M Survey Date: 1/09-2/09

Remarks:

**WEST CHICAGO AREA  
WATER MAIN RECONSTRUCTION**

Sheet Title: PLAN  
 Sheet No: 21 of 31  
 Web 1788