

Prepared For
F M G, Inc.
 3700 Bluebird Road
 Naperville, IL 60563
 (630) 848-4100 FAX (630) 342-4822
 www.fmgengineering.com

PRELIMINARY
 NOT FOR
 CONSTRUCTION

Scale: 1"=20'
 Designed By: CCK/KAC
 Design Date: MAY 2009
 Internal Job No: 090508
 Survey Date: 1/09-3/09

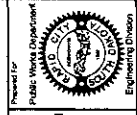
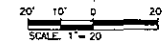
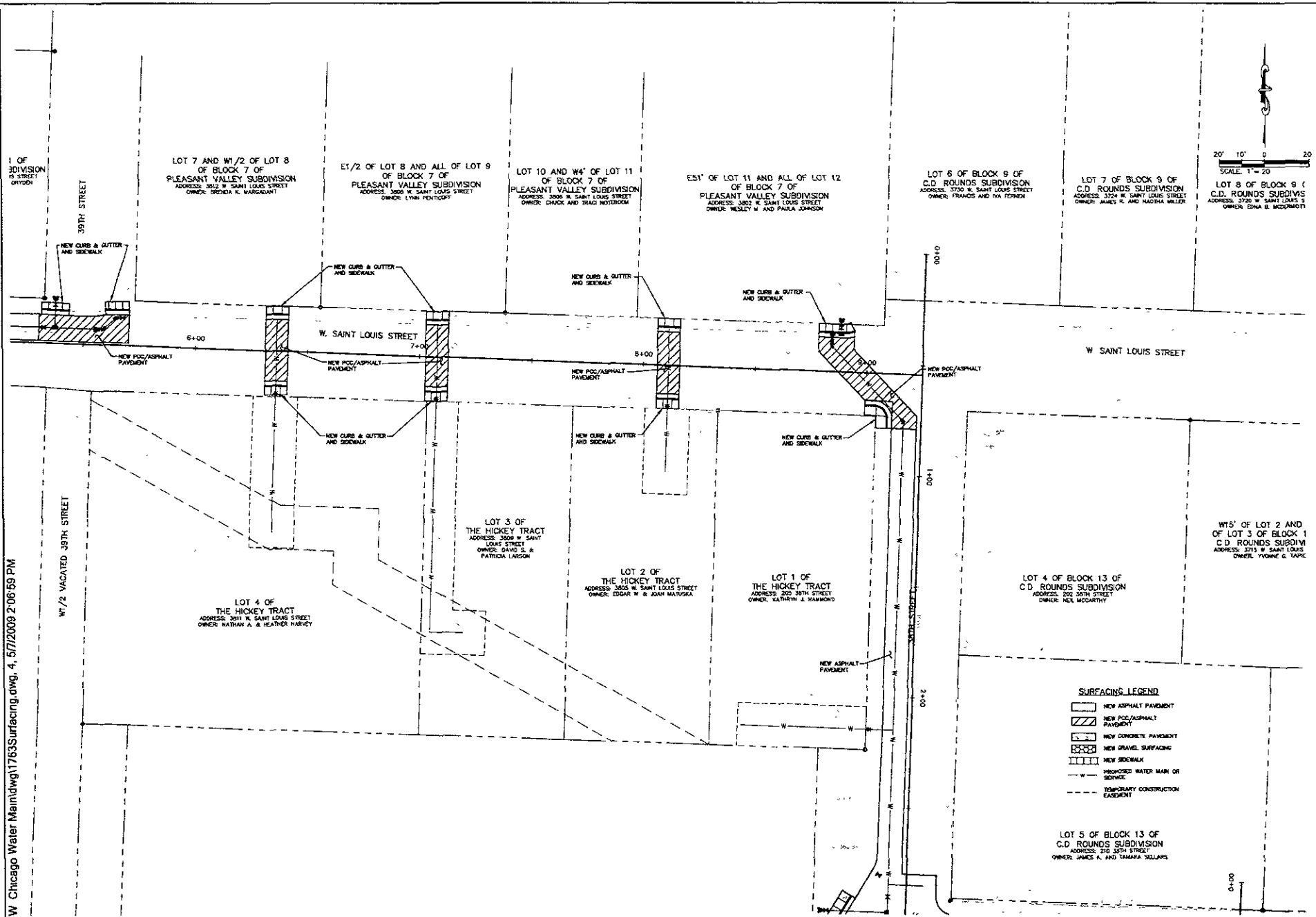
LC
 PLE AD

WEST CHICAGO AREA
 WATER MAIN RECONSTRUCTION

Sheet No.

SURFACING
 LAYOUT

W. Chicago Water Main (17763) Surfacing.dwg, 3, 5/7/2009 2:08:46 PM



Prepared for
F.M.G., Inc.
 8700 Bluffs Road
 Round Bay, IL 61702-0017
 (800) 344-4108 FAX (608) 848-4322
 www.fmgengineering.com



PRELIMINARY
 NOT FOR
 CONSTRUCTION

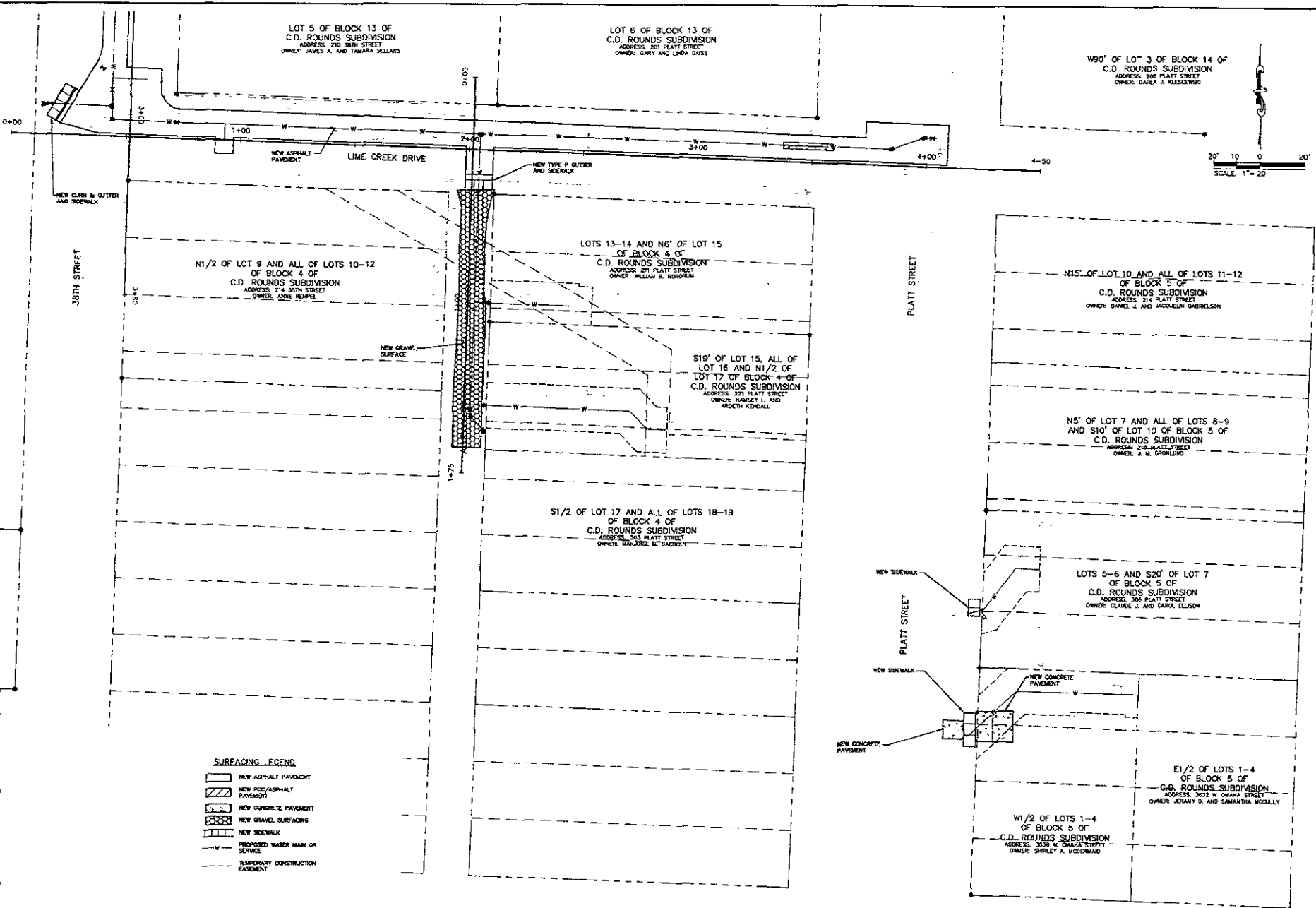
Scale: 1"=20'
 Drawn by: GJK/ADF
 Design Date: MAY 2009
 Project No: 050208
 Surveyed by: GJK/ADF
 Date: 1/05-3/08

WEST CHICAGO AREA
 WATER MAIN RECONSTRUCTION

Sheet Title:
SURFACING LAYOUT
 Date:
 25 of 31

W Chicago Water Main\dwg\1763\Surfacing.dwg, 4, 5/7/2009 2:06:59 PM

W. Chicago Water Main(dwg)1763Surfacing.dwg, 5, 5/7/2009 2:07.11 PM



SURFACING LEGEND

- NEW ASPHALT PAVEMENT
- NEW PCC/ASPHALT PAVEMENT
- NEW CONCRETE PAVEMENT
- NEW GRAVEL SURFACING
- NEW SIDEWALK
- PROPOSED WATER MAIN OR SERVICE
- TEMPORARY CONSTRUCTION EASEMENT

Prepared For: Public Works Department
 City of Chicago
 Engineering Division

F M G, Inc.
 9700 Blue Isle Road
 Rapid City, SD 57702-0317
 (605) 244-4100 FAX: (605) 348-4822
 www.fmg-engineering.com

Project No: PRELIMINARY NOT FOR CONSTRUCTION

Scale: 1"=20'

Issued: 11-2007
 Checked By: CALVIN JONES
 Design Date: MAY 2008
 Print Date: MAY 2008
 Internal Job No: 09SR045
 Submitted By: F.M.G.
 Survey Date: 10/2-3/08

**WEST CHICAGO AREA
 WATER MAIN RECONSTRUCTION**

Sheet Title: SURFACING LAYOUT

Sheet No: 26 of 31

