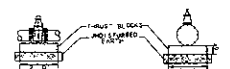
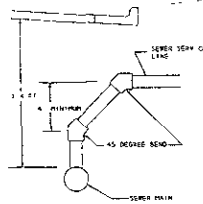


SILT FENCE

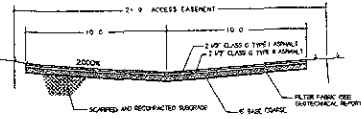


THRUST BLOCKING FOR VALVES

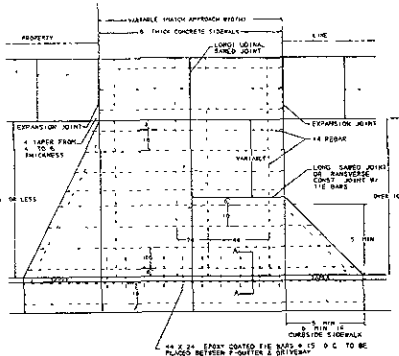


STANDARD SANITARY SEWER SERVICE CONNECTION

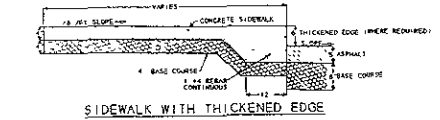
STANDARD CURB & GUTTER SECTION



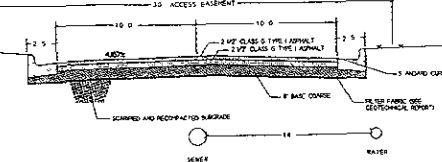
INVERTED ALLEY SECTION (TYPICAL)



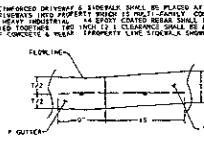
REINFORCED DRIVEWAY APPROACH



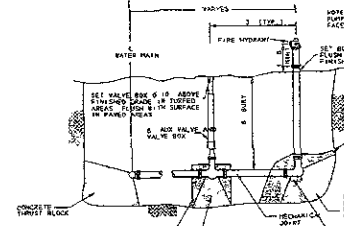
SIDEWALK WITH THICKENED EDGE



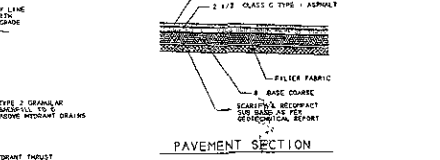
NORTH ACCESS SECTION (TYPICAL)



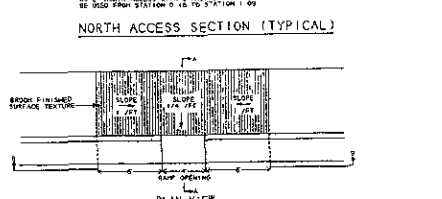
SECTION A-A REINFORCED DRIVEWAY APPROACH



FIRE HYDRANT ASSEMBLY DETAIL



PAVEMENT SECTION

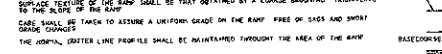


PLAN VIEW

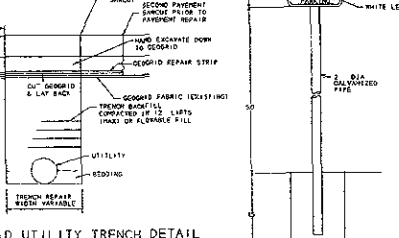


SECTION B-B

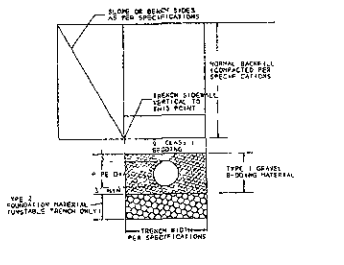
SECTION A-A



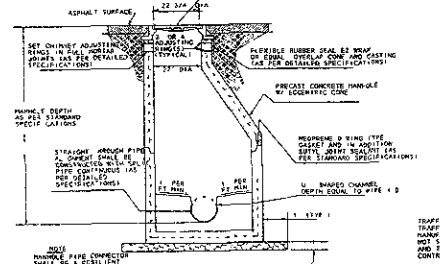
CURB RAMP IN CURB & GUTTER TYPE S



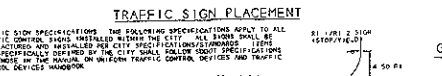
GEOGRID UTILITY TRENCH DETAIL



TRENCH DETAIL FOR SEWER/WATER MAIN



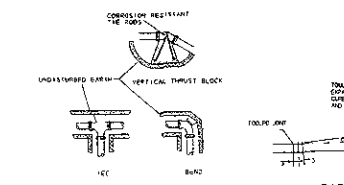
STANDARD SANITARY MANHOLE WITH MONOLITHIC BASE



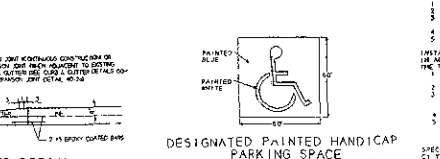
TRAFFIC SIGN PLACEMENT



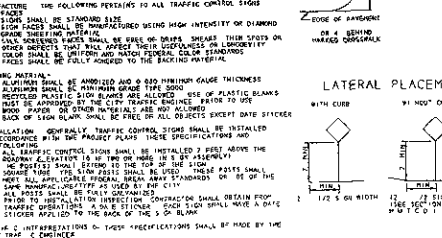
HANDICAP PARKING SIGN



THRUST BLOCKING FOR FITTINGS



DESIGNATED PAINTED HANDICAP PARKING SPACE



LATERAL PLACEMENT



BRITT ENGINEERING & LAND SURVEYING, INC.  
8035 BLACK HAWK ROAD PO BOX 649  
BLACK HAWK, SD 57718  
PH (605) 716-7888

LOT A & LOT B OF 14 LESS N 30  
OF E 255 OF LOT B, PLATTED,  
SEC. 4, T. 47E, R. 84W, RAPID CITY  
PENNINGTON COUNTY, SOUTH DAKOTA

DETAILS GREEN APARTMENTS  
BOBBY & GEMMA SUNDBY



GENERAL NOTES AND DETAILS

1. STRUCTURAL DRAWINGS SHALL BE USED IN CONJUNCTION WITH THE SPECIFICATIONS AND THE CONTRACTOR SHALL BE RESPONSIBLE FOR THE ACCURACY OF THE INFORMATION PROVIDED. THE CONTRACTOR SHALL BE RESPONSIBLE FOR THE ACCURACY OF THE INFORMATION PROVIDED. THE CONTRACTOR SHALL BE RESPONSIBLE FOR THE ACCURACY OF THE INFORMATION PROVIDED.

REQUIRED VERIFICATION AND INSPECTION OF CONCRETE CONSTRUCTION (BC 2003 (TABLE 1704.4))

Table with 6 columns: Verification and Inspection, Contractor, Inspector, Reference Standard, No. of Inspections, Percent of Inspections, and Remarks on this Project. Rows include inspection of reinforcing steel, placement of concrete, and curing of concrete.

GENERAL NOTES

- 1. STRUCTURAL DRAWINGS SHALL BE USED IN CONJUNCTION WITH THE SPECIFICATIONS AND THE CONTRACTOR SHALL BE RESPONSIBLE FOR THE ACCURACY OF THE INFORMATION PROVIDED. THE CONTRACTOR SHALL BE RESPONSIBLE FOR THE ACCURACY OF THE INFORMATION PROVIDED.

CONCRETE

- 1. ALL CONCRETE SHALL BE PLACED IN ACCORDANCE WITH THE DESIGN AND THE SPECIFICATIONS.

REINFORCING STEEL

- 1. ALL REINFORCING STEEL SHALL BE PLACED IN ACCORDANCE WITH THE DESIGN AND THE SPECIFICATIONS.

CHEMICAL ANALYSIS

1. ALL REINFORCING STEEL SHALL BE PLACED IN ACCORDANCE WITH THE DESIGN AND THE SPECIFICATIONS.

WIND UPLIFT PLAN



WIND UPLIFT PLAN

Table with 3 columns: Wind Speed (mph), Pressure (psf), and Exposure Category. Rows show wind speed ranges and corresponding pressures for different exposure categories.

NOTE: PRESSURES SHOWN ARE GROSS WIND PRESSURES FOR THIS DESIGN. REDUCE TO NET PRESSURES FOR USE FOR DESIGN.

CONCRETE MIX DESIGN

- 1. ALL CONCRETE SHALL BE PLACED IN ACCORDANCE WITH THE DESIGN AND THE SPECIFICATIONS.

CONCRETE AND REINFORCING PLACEMENT

- 1. ALL CONCRETE SHALL BE PLACED IN ACCORDANCE WITH THE DESIGN AND THE SPECIFICATIONS.

REINFORCING STEEL

- 1. ALL REINFORCING STEEL SHALL BE PLACED IN ACCORDANCE WITH THE DESIGN AND THE SPECIFICATIONS.

CHEMICAL ANALYSIS

1. ALL REINFORCING STEEL SHALL BE PLACED IN ACCORDANCE WITH THE DESIGN AND THE SPECIFICATIONS.

WOOD

- 1. STRUCTURAL WOOD COMPONENTS SHALL BE PLACED IN ACCORDANCE WITH THE DESIGN AND THE SPECIFICATIONS.

WOOD REINFORCING

- 1. PLYWOOD ROOF, FLOOR AND WALL SHEATHING SHALL BE PLACED IN ACCORDANCE WITH THE DESIGN AND THE SPECIFICATIONS.

CONCRETE

- 1. ALL CONCRETE SHALL BE PLACED IN ACCORDANCE WITH THE DESIGN AND THE SPECIFICATIONS.

REINFORCING STEEL

- 1. ALL REINFORCING STEEL SHALL BE PLACED IN ACCORDANCE WITH THE DESIGN AND THE SPECIFICATIONS.

CHEMICAL ANALYSIS

1. ALL REINFORCING STEEL SHALL BE PLACED IN ACCORDANCE WITH THE DESIGN AND THE SPECIFICATIONS.

WIND UPLIFT PLAN

- 1. ALL REINFORCING STEEL SHALL BE PLACED IN ACCORDANCE WITH THE DESIGN AND THE SPECIFICATIONS.

CHEMICAL ANALYSIS

1. ALL REINFORCING STEEL SHALL BE PLACED IN ACCORDANCE WITH THE DESIGN AND THE SPECIFICATIONS.

WIND UPLIFT PLAN

- 1. ALL REINFORCING STEEL SHALL BE PLACED IN ACCORDANCE WITH THE DESIGN AND THE SPECIFICATIONS.

CHEMICAL ANALYSIS

1. ALL REINFORCING STEEL SHALL BE PLACED IN ACCORDANCE WITH THE DESIGN AND THE SPECIFICATIONS.

WIND UPLIFT PLAN

- 1. ALL REINFORCING STEEL SHALL BE PLACED IN ACCORDANCE WITH THE DESIGN AND THE SPECIFICATIONS.



Albertson Engineering Inc. 2010 West 46th Street, Suite 204, Rapid City, South Dakota 57702

Table with 2 columns: No., Revision/Issue, Date. Rows are blank for revisions.

J.S. Scull Construction logo and address: 883 INDUSTRIAL AVE, RFD CITY SD, 57709-7636

EVERGREEN APT. GARAGES STRUCTURAL NOTES, INSPECTION TABLE & WIND UPLIFT PLAN

SO logo and date: 04-18-06

NTS