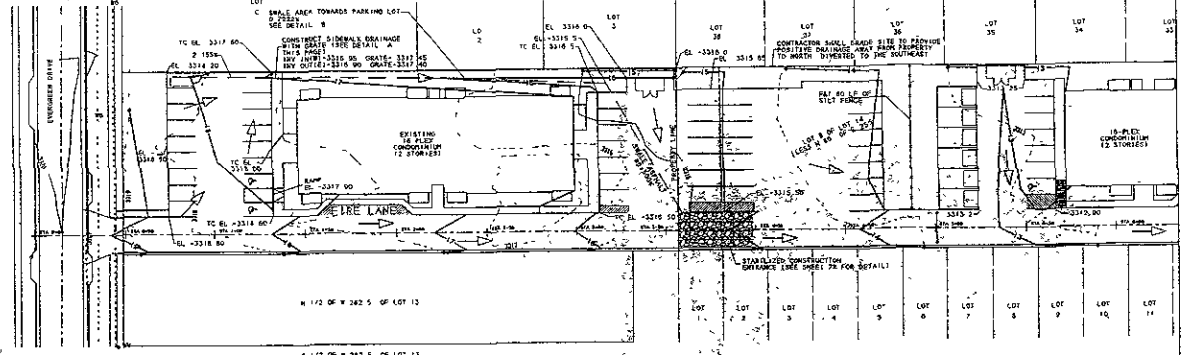
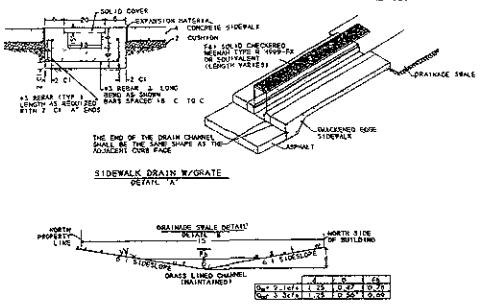




SCALE 1" = 30'  
MAY 1 2005  
REVISED APRIL 26 2007

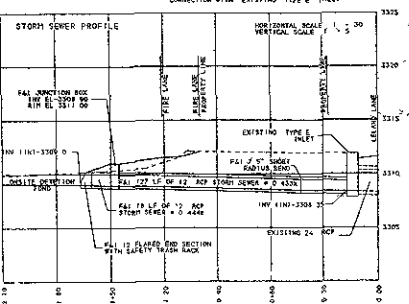
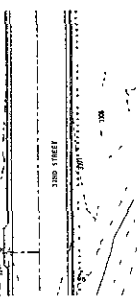
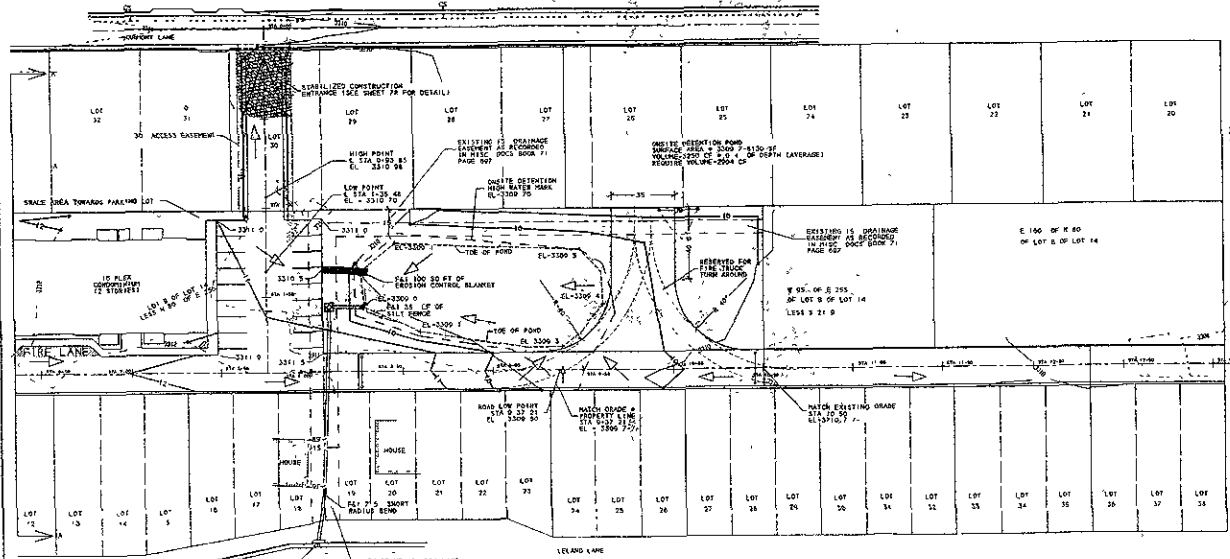


NOTE ALL GRADES ARE ASPHALT GRADES UNLESS OTHERWISE INDICATED



NOTES

- WEEDS AND PESTICIDES ON IMPROVED AREAS DESTROYED DURING THE CONSTRUCTION. ALL DRAINAGE SHALES AND FACTORY SET BELOW 3" OR 4" BELOW SURFACE OF DRAINAGE CHANNEL.
- CURB - 2" OR 3" HIGH
- GENERAL - SEE GRADE SHEET
- CORNER - SEE GRADE SHEET
- REINFORCEMENT - SEE GRADE SHEET
- OTHER NOTES - SEE GRADE SHEET
- LOCATION AND PLACEMENT OF TOPSOIL AND SUBSOIL SHALL BE COORDINATED WITH THE OWNER
- THIS AREA TO BE IMPROVED AND MAINTAINED BASED ON EXISTING CONDITIONS. REMOVE AND REGRADE EXISTING WELLS, SLOPES AND CURBS IF NECESSARY.



BRITTON ENGINEERING & LAND SURVEYING, INC.  
8035 BLACK HAWK ROAD SUITE 5, PO BOX 649  
BLACK HAWK SD 57118  
PH. 605.716.7988

LOT A & LOT B OF 14 LESS N80  
DE E 255' OF LOT 8 PLATTED  
SEC. 1 T14N R7E B4M RAPID CITY  
PENNINGTON COUNTY, SOUTH DAKOTA.

DRAINAGE & GRADING PLAN  
EROSION CONTROL  
EVERGREEN APARTMENTS  
HOBBSY & GENALE SUNDBY

4/26/07  
1:1  
1/31