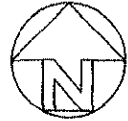
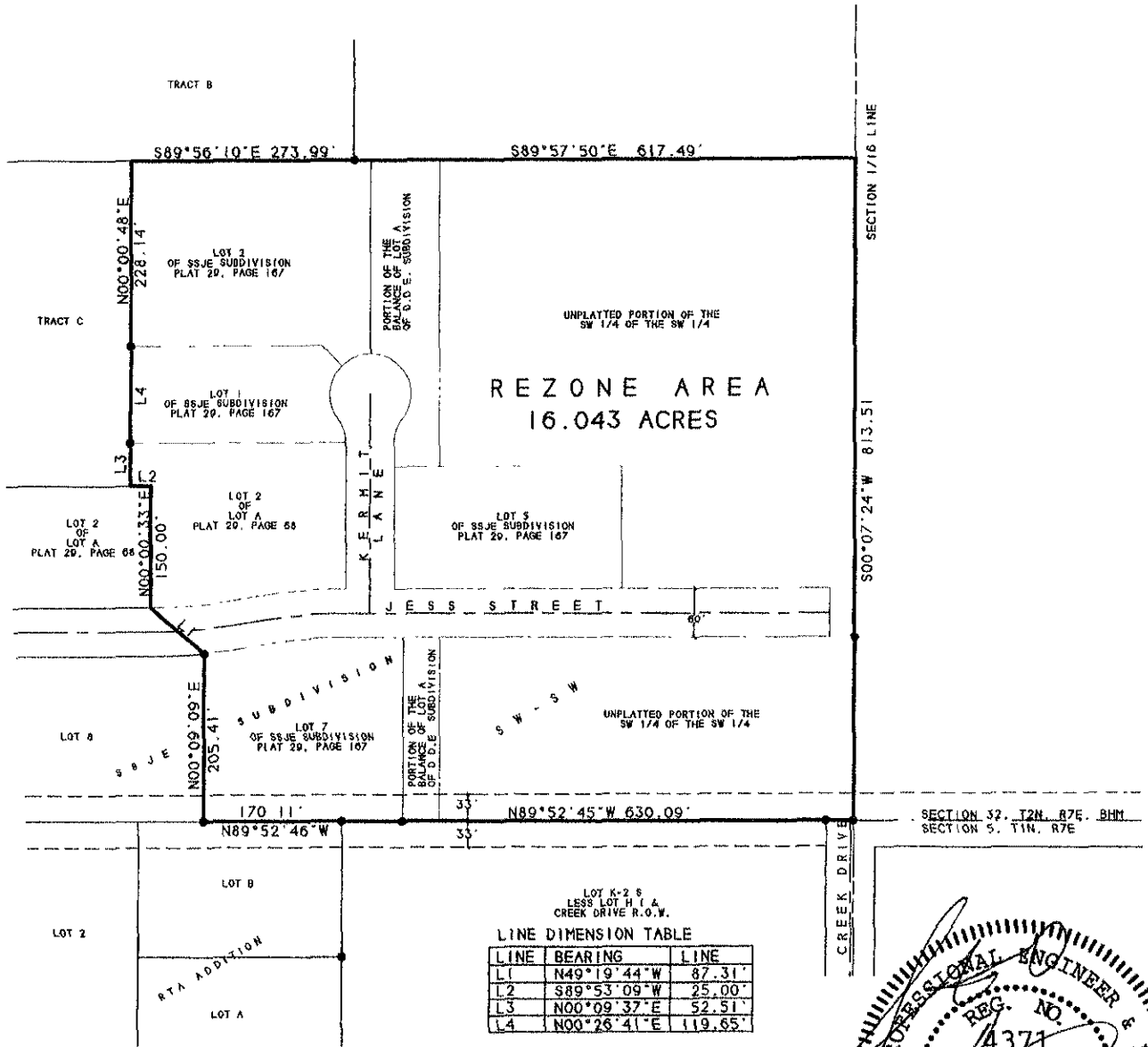


EXHIBIT "A"
OF
REZONE AREA
FOR

JESS STREET RIGHT-OF-WAY,
KERMIT LANE RIGHT-OF-WAY,
LOT 2 OF LOT A OF D.D.E. SUBDIVISION,
LOTS 1, 2, 5 & 7 SSJE SUBDIVISION AND
THE UNPLATTED PORTION OF THE SW 1/4 OF THE SW 1/4 OF
SECTION 32, T2N, R8E, BHM
RAPID CITY, PENNINGTON COUNTY, SOUTH DAKOTA

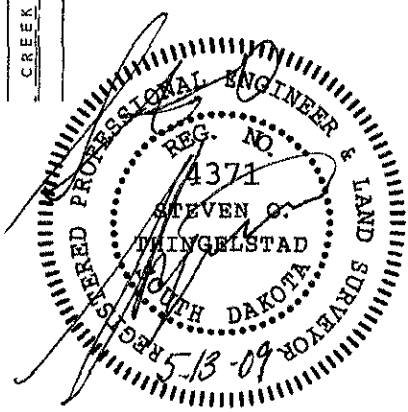


SCALE: 1" = 100'
MAY 2, 2009



LINE DIMENSION TABLE

LINE	BEARING	LINE
L1	N49°19'44"W	87.31'
L2	S89°53'09"W	25.00'
L3	N00°09'37"E	52.51'
L4	N00°26'41"E	119.65'



PREPARED BY: STEVEN O. THINGELSTAD
BRITTON ENGINEERING & LAND SURVEYING, INC.
8035 BLACK HAWK ROAD, SUITE 5,
BLACK HAWK, SOUTH DAKOTA 57718
TELEPHONE: (605) 716-7988