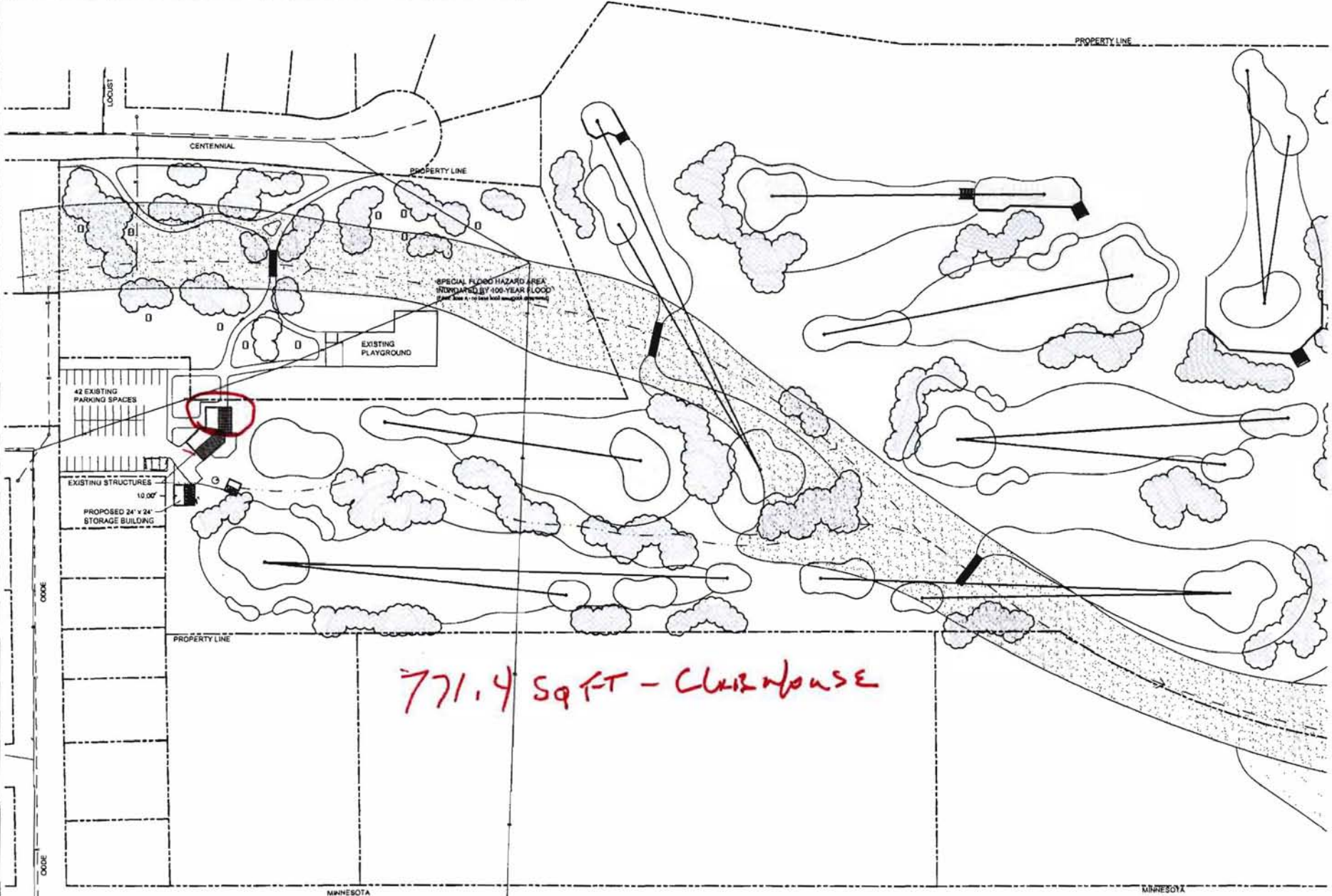


LANDSCAPE PROVIDED		
ITEM	AREA / PLANTS	POINTS
REQUIRED POINTS		945.075
GRASS (10 points per SY)	102,880 SY	1,028,800
MEDIUM TREES (2000 points EACH)	-	-
SHRUBS (250 points EACH)	-	-
TOTAL POINTS		1,028,800

LANDSCAPE REQUIREMENTS	
ITEM	POINTS
TOTAL SITE AREA	947,750 sf
BUILDING/ STRUCTURE AREA	2,875 sf
REQUIRED POINTS	945.075

- GENERAL NOTES**
1. THIS PROJECT IS A YMCA PROJECT IN PARKS AND RECREATION. LACROIX LI CURRENTLY UNDER LEASE TO THE YM
 2. THE PROPOSED STRUCTURE WILL BE / DIMENSIONS - 24' x 24' x 10'-6". THE BU WALLS AND ROOF. WALLS ARE TO BE AND DOORS TO BE WHITE IN COLOR. I
 3. BASE DRAWING IS COMPLE FROM R/ BEEN DONE.



18/30

771.4 sq ft - clubhouse

Oct 10, 2008 - 11:51am - C:\Landscape Architecture\LaCroix\Links - Record Drawings\YMCA-SYFF_Base_10-02-08.dwg

SITE PLAN

PRELIMINARY - NOT FOR CONSTRUCT