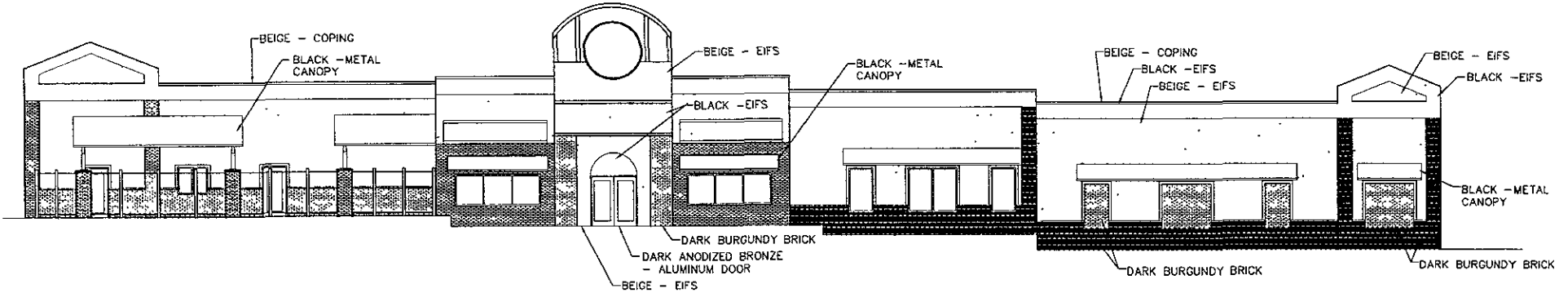
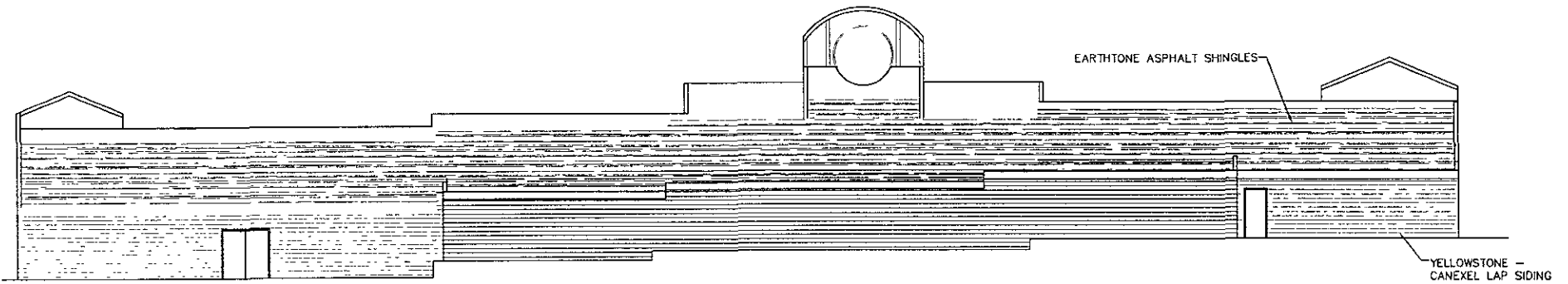


BUILDING MATERIALS / COLORS



FRONT ELEVATION - EAST



REAR ELEVATION - WEST

RECEIVED

APR 24 2009

Rapid City Growth
Management Department



SCHLIMMEN DESIGN
CORPORATION
1001 W. 10TH ST.
RAPID CITY, SD 57701
PH: 605.343.1100

PROJECT TITLE: SPORTS BUZZ
MOUNT RUSHMORE ROAD
RAPID CITY, SOUTH DAKOTA

SHEET TITLE: EXTERIOR ELEVATIONS

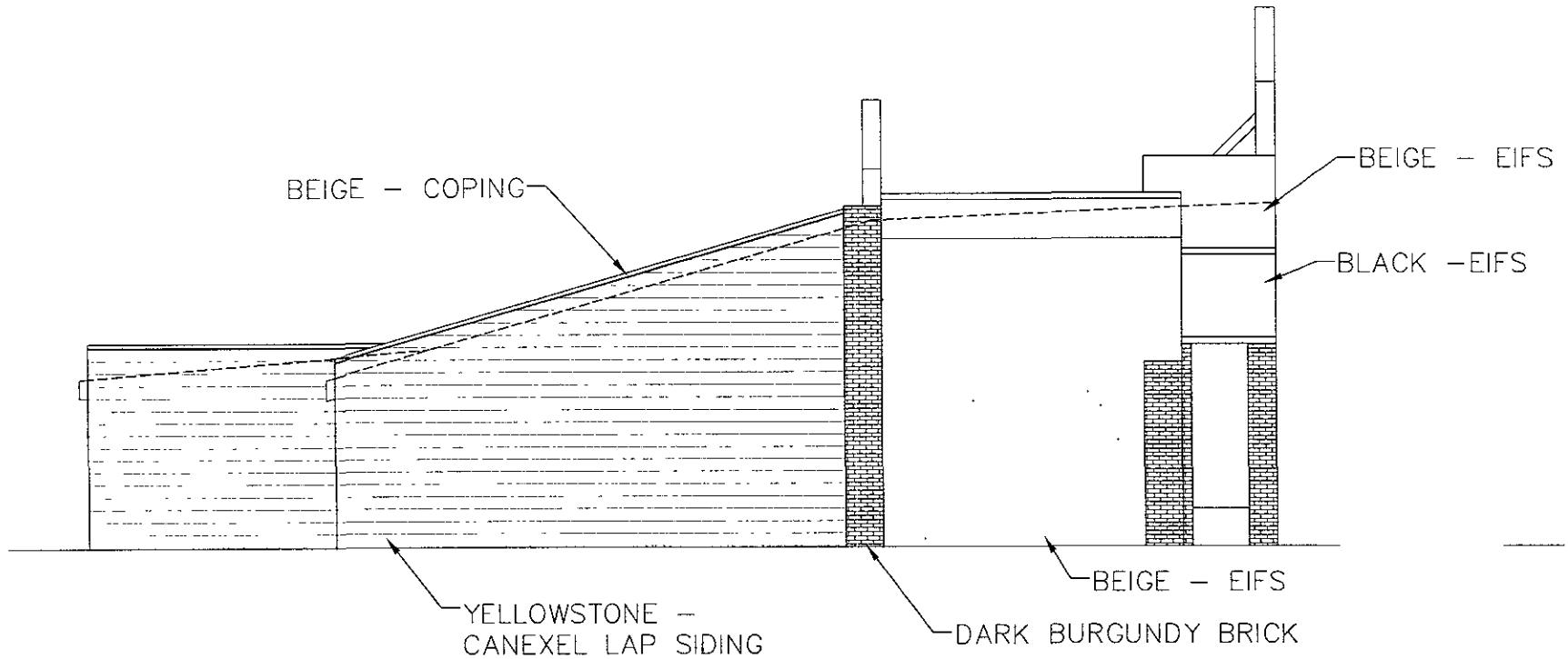
DATE: 4/23/09
DN BY: GH
CK BY: RS
REVS:

PROJECT NUMBER: -

SCALE: AS SHOWN

SHEET: A3.1a

BUILDING MATERIALS / COLORS




SIDE ELEVATION - SOUTH

RECEIVED

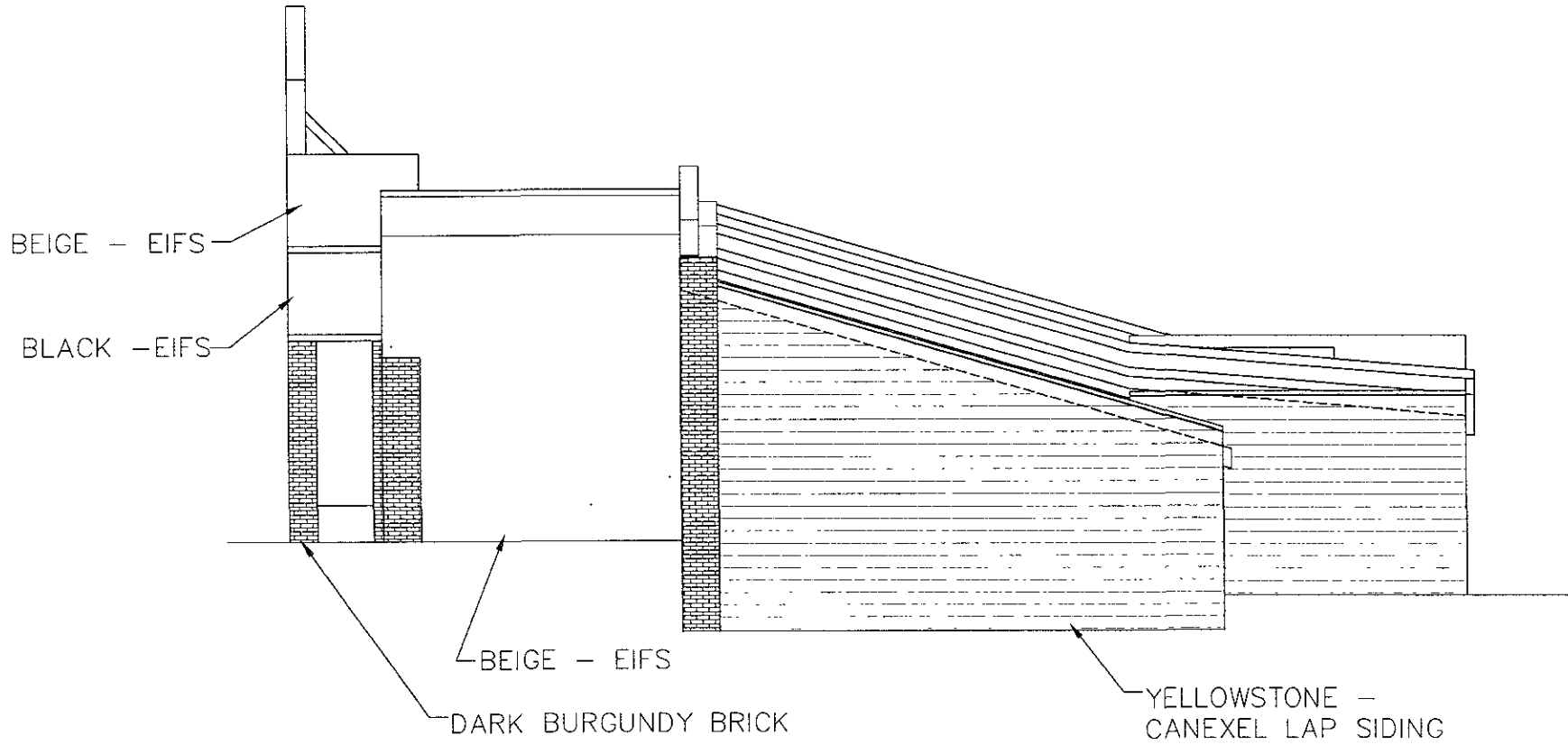
APR 24 2009

Rapid City Growth
Management Department



 SCHLAGEN DESIGN CONSULTANTS 1001 14th Street Rapid City, SD 57701
PROJECT TITLE: SPORTS BUZZ MOUNT RUSHMORE ROAD RAPID CITY, SOUTH DAKOTA
SHEET TITLE: EXTERIOR ELEVATIONS
DATE: 4/23/09
DN BY: GH
CK BY: RS
REVS:
PROJECT NUMBER:
SCALE: AS SHOWN
SHEET: A3.1b

BUILDING MATERIALS / COLORS



SIDE ELEVATION - NORTH

RECEIVED

APR 24 2009

Rapid City Growth
Management Department



SCHLINGER DESIGN
CONSULTANTS
201 S. GARDNER STREET
RAPID CITY, SD 57701

PROJECT TITLE: SPORTS BUZZ
MOUNT RUSHMORE ROAD
RAPID CITY, SOUTH DAKOTA

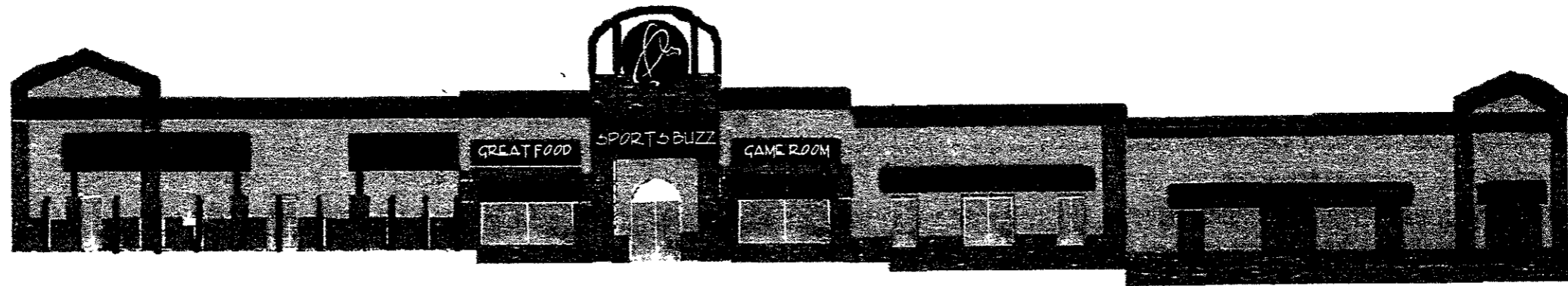
SHEET TITLE: EXTERIOR ELEVATIONS

DATE: 4/23/09
 CH BY: GH
 CK BY: RB
 REVS:

PROJECT NUMBER: -

SCALE: AS SHOWN

SHEET: A3.1c



CONFIDENTIAL

RECEIVED

APR 27 2009

Rapid City Growth
Management Department