

END

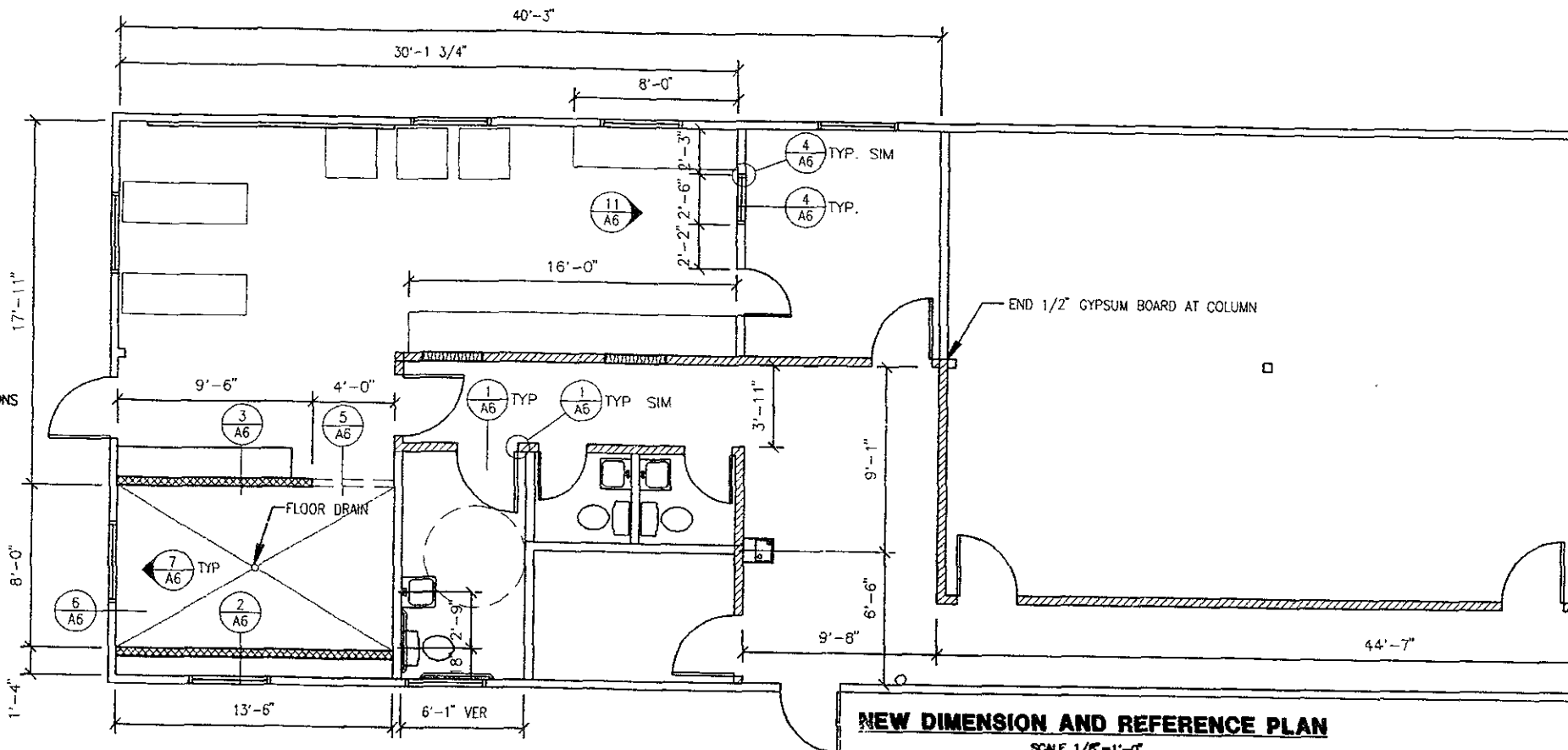
FLOORS @ 16" O.C.
 GYPSUM BOARD AND
 GYPSUM BOARD EACH SIDE
 FLOORS @ 16" O.C.,

4 NEW 1/2" GYPSUM
 SEE ELECTRICAL
 NOTES AND OTHER

REMAIN

CONDITIONS AND DIMENSIONS
 IN ALL ROOMS AND SURFACES
 TO BE RESTORED TO ORIGINAL

LECT
Handwritten signature



NEW DIMENSION AND REFERENCE PLAN

SCALE 1/8" = 1'-0"



SPECIFICATIONS - PART 2 OF 2

BASE AND ACCESSORIES
 All items complying with FS SS-W-40, Type
 as recommended by manufacturer.
 All items recommended by manufacturer to receive
 as specified in this Section according to manufacturer's
 base to walls, columns, and other permanent fixtures in
 here base is required. Install wall base as practicable
 base to substrate throughout
 with continuous contact of base
 vertical substrates
 from straight pieces of maximum
 so they are butted to
 of type indicated and secure with
 reducer strips at edges of flooring
 to be exposed
 a compliance with requirements

- b. corrected
- c. Repair minor holes, cracks, depressions, and rough areas using material recommended by carpet or adhesive manufacturer
- d. Clear away debris and scrape up cementitious deposits from surfaces to receive carpeting; vacuum clean immediately before installation. Check concrete surfaces to ensure no dusting through installed carpet, apply sealer where required to prevent dusting
- e. Undercut doors at door openings as required to accept new carpet.
2. Installation.
 - a. Comply with manufacturer's recommendations for seam locations and direction of carpet; maintain uniformity of carpet direction and lay of pile. Follow seaming diagram as submitted and approved. At doors, center seams under doors, do not place seams in traffic direction at doorway
 - b. Extend carpet under open-bottomed obstructions and under removable flanges and furnishings, and into alcoves and closets of each space.
 - c. Provide cut-outs where required, and bind cut edges properly where not concealed by protective edge guards or overlapping flanges
 - d. Install carpet edge guard where edge of carpet is exposed, anchor guards to substrate.
 - e. Expansion Joints: Do not bridge building expansion joints with continuous carpeting, provide for

- materials or surfaces. If color or finish is not designated, the Architect will select from standard colors or finishes available
6. Painting is not required on unfinished items, finished metal surfaces, concealed surfaces, operating parts, and labels.
 - a. Labels: Do not paint over Underwriters Laboratories, Factory Mutual, or other code-required labels or equipment name, identification, performance rating, or nomenclature plates.
 - B. PRODUCTS
 1. Available Manufacturers: Subject to compliance with requirements, manufacturers offering products that may be incorporated in the Work include, but are not limited to, the following:
 - a. Devoe and Reynolds Co (Devoe)
 - b. Glidden Coatings and Resins, Division of SCM Corporation (Glidden)
 - c. Benjamin Moore and Co (Moore)
 - d. PPG Industries, Pittsburgh Paints (Pittsburgh)
 - e. Pratt and Lambert (P & L)
 - f. The Sherwin-Williams Company (S-W)
 2. Paint Materials, General: Provide block fillers, primers, finish coat materials, and related materials that are compatible with one another and the substrates indicated under conditions of service and application, as demonstrated by the manufacturer, based on testing and field experience.
 3. Material Quality: Provide the manufacturer's best

3. Paint Schedule: Provide the following paint systems for the various substrates indicated.
4. Interior Paint Schedule:
 - a. General: Provide the following paint systems for the various substrates, as indicated. Sherwin Williams and Pratt & Lambert products have been specified for purposes of establishing a standard.
 - i) Gypsum Board - Eg-Shel Acrylic Latex 14 ea.
 1 Coat Primer: ProMar 200 Latex Wall Primer
 - ii) Gypsum Board - Semi-gloss Epoxy
 1 Coat Primer: ProMar 200 Latex Wall
 2 Coats Tile-Clad II Epoxy Enamel 1.3 ea.
 - iii) Wet-Room and ADA toilet
 2 Coats Calvanized Metal - Semi-gloss Latex Enamel
 2 Coats Pro Mar 200 Latex Semi-Gloss Enamel 1.3 ea.
 - iv) Miscellaneous Metals:
 1 Coat Primer: Kem Kromik Metal Primer (Touch up only for shop primed metals) 30 ea.
 2 coats Pro Mar Latex Semi-Gloss Enamel 1.3 ea.
 All hollow metal doors and frames

4. Double-Roll Toilet Tissue dispenser to accommodate two 5-inch diameter.
5. Liquid Soap Dispenser for surface mounting capacity. Provide stainless steel with square corners. Provide in No. 4 satin finish.
6. Stainless Steel Angle-frame with angle shaft with square corners. Provide in No. 4 satin finish.
7. Stainless Steel Grab Bar. Thickness not less than 1/4 inch. Provide in No. 4 satin finish.
8. Mounting Concealment and anchorages.
9. Clearance: 1'-1/2" and inside face of gripping surface.
10. Heavy-Duty, Size 10. Provide in No. 4 satin finish.
11. Surface-Mounted Toilet Paper Holder. Provide in No. 4 satin finish.

SECTION 10800 - TOILET AND BATH ACCESSORIES

- A. PRODUCTS
 1. Manufacturers: Subject to compliance with requirements