  
 MAY 5, 2005  
 SCALE: 1" = 20'  
 REVISED MAY 25, 2002

SHEET 6

NOTES:

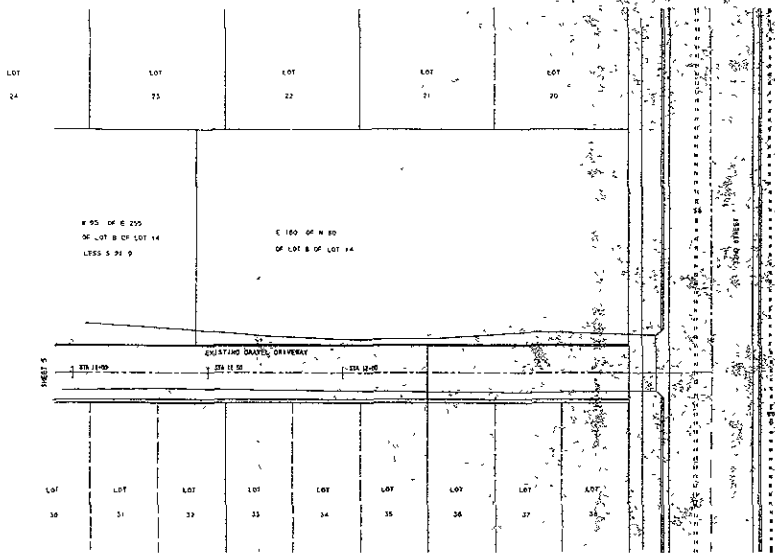
- 1. REMOVE AND DISPOSE OF EXISTING BUILDINGS, TREES, FENCINGS AND OTHER MATERIAL.
- 2. ANY UTILITY RELOCATOR SHALL BE COORDINATED BY THE LOCAL UTILITY COMPANY.
- 3. CONTRACTOR SHALL VERIFY THE DEPTH AND LOCATION OF BOTH THE EXISTING WATER AND SEWER LINES AND CONTACT THE ENGINEER WITH ANY DISCREPANCY PRIOR TO CONSTRUCTION.
- 4. CONTRACTOR TO COORDINATE CONNECTION TO BOTH RAPID CITY SEWER AND WATER WITH SAJID CITY PUBLIC WORKS DEPARTMENT AND TRAFFIC CONTROL.
- 5. PLAN AND PROFILE FOR SOUTH STORM SEWER ALSO LOCATED ON SHEET 5.



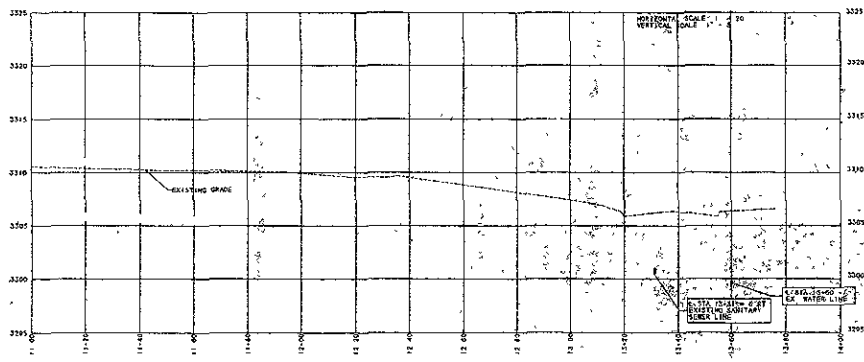
BROTTON ENGINEER INC & LAND SURVEYING, INC  
 23085 BLACK HAWK ROAD, PO BOX 649  
 BLACK HAWK, SD 57718  
 TEL: (605) 776-7288

LOT 10-36 OF 36-00-114 LESS AN 80' X 10' STRIP OF LOT 10-14 PLATTED SEC 10-14-114, T118N, R10W, SD 57718

11-00' WATER & SEWER PLAN & PROFILES  
 FROM STA 9+00 TO STA 11+00  
 EMBLETTEN APARTMENTS  
 PROJECT NO. 05-001-0001



SCALE 1" = 20'  
 MAY 1, 2008  
 REVISED NOV. 22, 2007



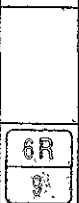
- NOTES.**
- REMOVE AND DISPOSE OF EXISTING BUILDINGS TREES FENCING AND OTHER MATERIAL
  - ANY UTILITY RELOCATES SHALL BE COORDINATED WITH LOCAL UTILITY COMPANY
  - CONTRACTOR SHALL FIELD VERIFY THE DEPTH AND LOCATION OF BOTH THE EXISTING WATER AND SEWER LINES AND CONTACT THE ENGINEER WITH ANY DISCREPANCY PRIOR TO CONSTRUCTION
  - CONTRACTOR TO COORDINATE CONNECTION TO BOTH RAPID CITY SEWER AND WATER WITH RAPID CITY PUBLIC WORKS DEPARTMENT AND TRAFFIC CONTROL
  - PLAN AND PROFILE FOR EAST STORM SEWER ALSO LOCATED ON SHEET C-3
  - MAINTAIN 18" VERTICAL SEPARATION BETWEEN STORM SEWER AND WATERLINE OR GROUND WATER LINE WHERE SEPARATION CANNOT BE MET
  - REMOVE AND RELOCATE EXISTING TREES AND UTILITY LINES ON EAST SIDE OF PROPOSED STORM SEWER LINE AS NEEDED
  - CUT OUT REPLACE OR REFORM CONCRETE WALL WHERE STORM SEWER CONNECTS TO EXISTING RETAINING WALL



BRITTON ENGINEERING & LAND SURVEYING, INC  
 8035 BLACK HAWK ROAD PO BOX 649  
 BLACK HAWK, SD 57718  
 PH (605) 716-7988

LOT A & LOT B OF 14 LESS N 80' OF E 250' OF LOT B PLATTED SEC 4 T1N R7E BHM RAPID CITY PENNINGTON COUNTY, SOUTH DAKOTA

ROAD PLAN & PROFILE STA 11+00 TO 14+00  
 STORM SEWER PLAN AND PROFILES  
 EVERGREEN APARTMENTS  
 BOBBY & GEORGE BUNDREY





SEPTEMBER 19 2007  
SCALE 1" = 20'

**RECEIVED**  
MAR 2 2009  
Rapid City Growth  
Management Department

BRITTON ENGINEERING & LAND SURVEYING, INC.  
3085 BLACK HAWK ROAD, P.O. BOX 649  
BLACK HAWK, SD 57718  
PH (605) 716-7988

LOT A & LOT 8 OF 14 LESS N 80  
OF E 25% OF LOT B PLATTED CITY  
SEC 4, T1N, R27E, BHM, RAPID CITY,  
PENNINGTON COUNTY, SOUTH DAKOTA

WATER MAIN ALONG BUILDING  
EVENGREEN APARTMENTS

