

SIDEWALK REMOVAL:
 STA 0+05, 45' RT TO STA 0+15, 47' RT, 50 SF
 STA 0+33, 39' RT TO STA 0+44, 42' RT, 50 SF
 STA 0+76, 31' RT TO STA 0+87, 35' RT, 50 SF
 STA 1+61, 16' RT TO STA 2+05, 40' RT, 140 SF

WATER MANHOLE REMOVAL:
 STA 0+21, 13' LT
 ABANDON EXISTING MH &
 ABANDON WATER LINE
 AT THE CORP

SANITARY SEWER MAIN
 STA 0+20
 F&I STD MH #1
 STA 0+20 TO STA 1+77
 F&I 8" PVC SANITARY SEWER
 MAIN, 157 LF
 STA 1+77
 F&I STD MH #2
 STA 1+77 TO STA 1+99
 F&I 8" PVC SANITARY SEWER
 MAIN, 22 LF
 STA 1+99
 F&I DROP MH #3
 STA 1+99 CL TO 8' LT
 F&I 8" PVC SANITARY SEWER MAIN,
 CONNECT TO EXISTING, 8 LF
 STA 1+99 TO STA 2+07
 F&I 8" PVC SANITARY SEWER MAIN,
 CONNECT TO EXISTING, 8 LF

CURB & GUTTER REMOVAL:
 STA 0+12, 7' RT TO STA 2+11, 16' RT, 184 LF

DRIVEWAY APPROACH REMOVAL:
 STA 1+65, 3' LT TO STA 2+07, 16' RT, 12.8 SY

DRIVEWAY REMOVAL:
 STA 1+67, 1' RT TO STA 2+02, 35' RT, 22.9 SY

ASPHALT PAVEMENT REMOVAL:
 STA 0+12, 4' RT TO STA 2+79, 1' LT, 452.24 SY

REMOVE EXISTING MANHOLE:
 STA 1+99, 1 EA

REMOVE CLEANOUT:
 STA 0+10, 43' RT
 STA 0+81, 29' RT
 STA 0+42, 62' RT
 STA 0+81, 29' RT
 STA 1+34, 16' RT

CONSTRUCT SIDEWALK:
 STA 0+05, 45' RT TO STA 0+15, 47' RT, 50 SF
 STA 0+33, 39' RT TO STA 0+44, 42' RT, 50 SF
 STA 0+76, 31' RT TO STA 0+87, 35' RT, 50 SF
 STA 1+61, 16' RT TO STA 2+05, 40' RT, 140 SF

CONSTRUCT CURB & GUTTER:
 STA 0+12, 7' RT TO STA 2+11, 16' RT, 184 LF

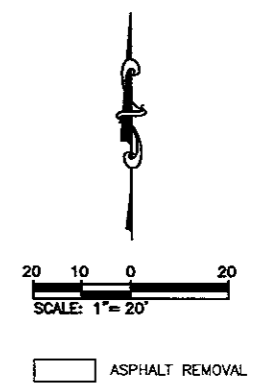
CONSTRUCT REINFORCED DRIVEWAY APPROACH:
 STA 1+62, 2' LT TO STA 2+07, 16' RT, 11.65 SY

CONSTRUCT DRIVEWAY:
 STA 1+68, 2' RT TO STA 2+03, 35' RT, 22.12 SY

CONSTRUCT ASPHALT PAVEMENT OVERLAY:
 STA 0+12, 4' RT TO STA 2+79, 1' LT, 452.24 SY
 AGGREGATE BASE COURSE, 6" THICK, 168 TON
 CLASS G, TYPE 1 ASPHALT, 5" THICK, 140 TON

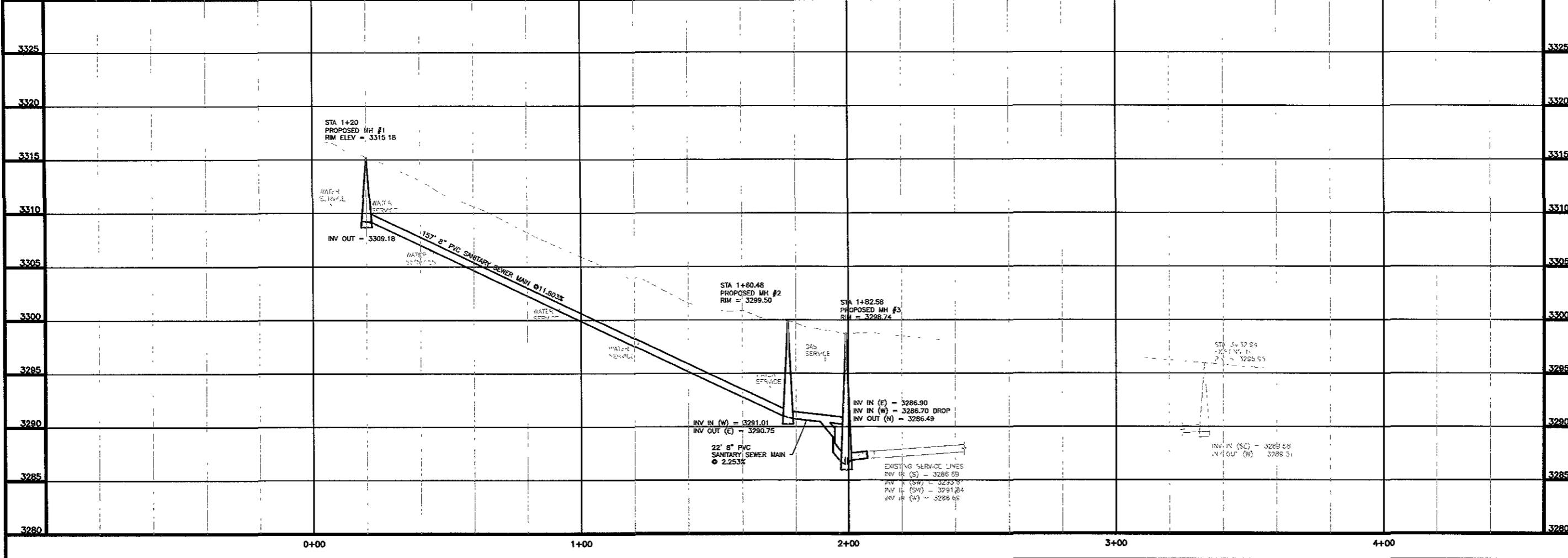
FURNISH & INSTALL CLEANOUTS:
 STA 0+10, 43' RT, 1 EA
 STA 0+11, 11' RT, 1 EA
 STA 0+42, 62' RT, 1 EA
 STA 0+81, 29' RT, 1 EA
 STA 1+37, 16' RT, 1 EA

FURNISH & INSTALL SERVICE LINES:
 STA 0+10, 43' RT TO STA 0+26, 46' LF
 STA 0+11, 11' RT TO STA 0+24, 17' LF
 STA 0+42, 62' RT TO STA 0+31, 62' LF
 STA 0+81, 29' RT TO STA 0+75, 37' LF
 STA 1+37, 16' RT TO STA 1+34, 16' LF



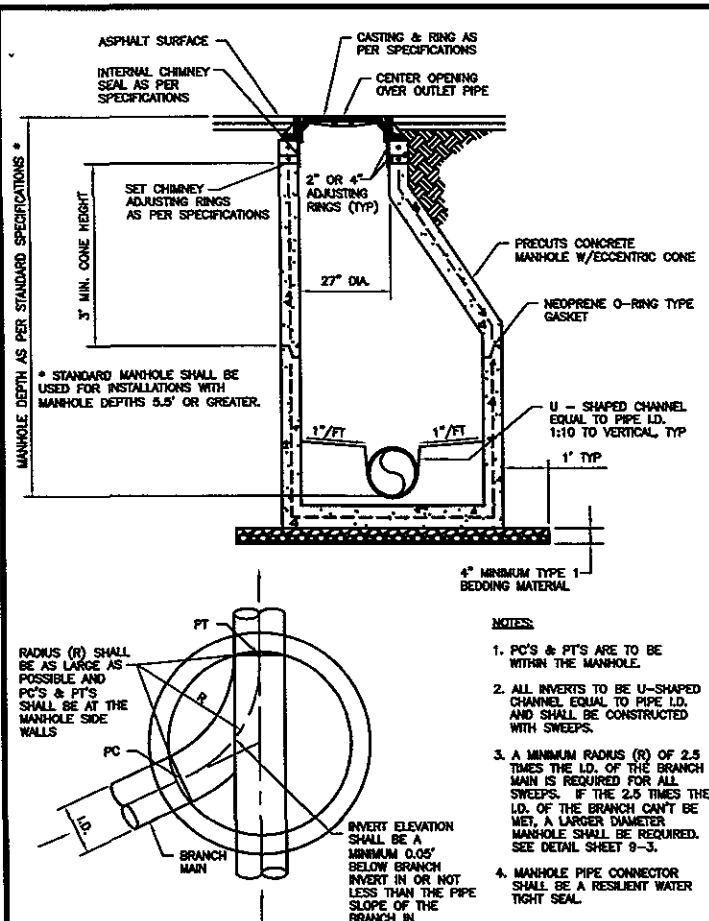
CITY OF RAPID CITY
 PUBLIC WORKS DEPARTMENT
 ENGINEERING SERVICES

Scale	20'
Designed By	Drawn By
LA	
Design Date	Print Date
Internal Job No	
SS08-1775	
Surveyed By	Survey Date
Revisions:	

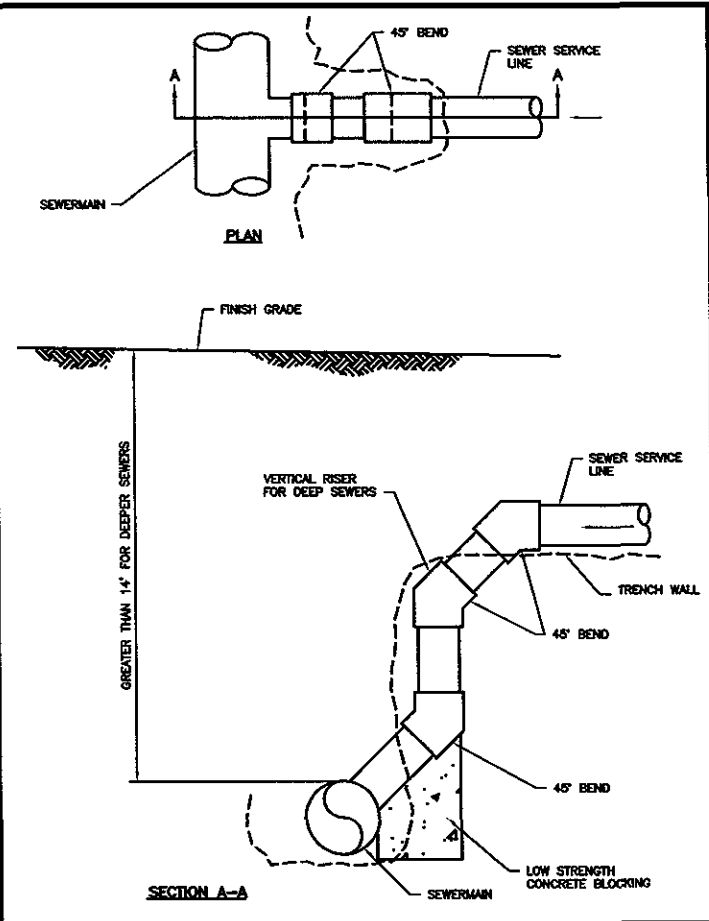


SOUTH STREET
SANITARY SEWER EXTENSION

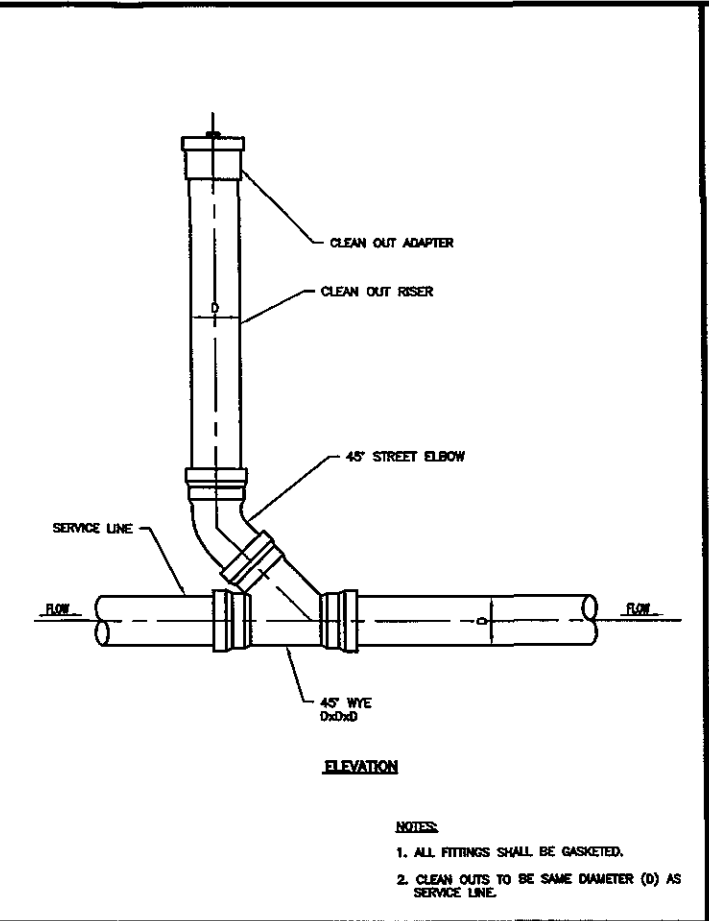
CITY OF RAPID CITY PROJECT NO. SS08-1775



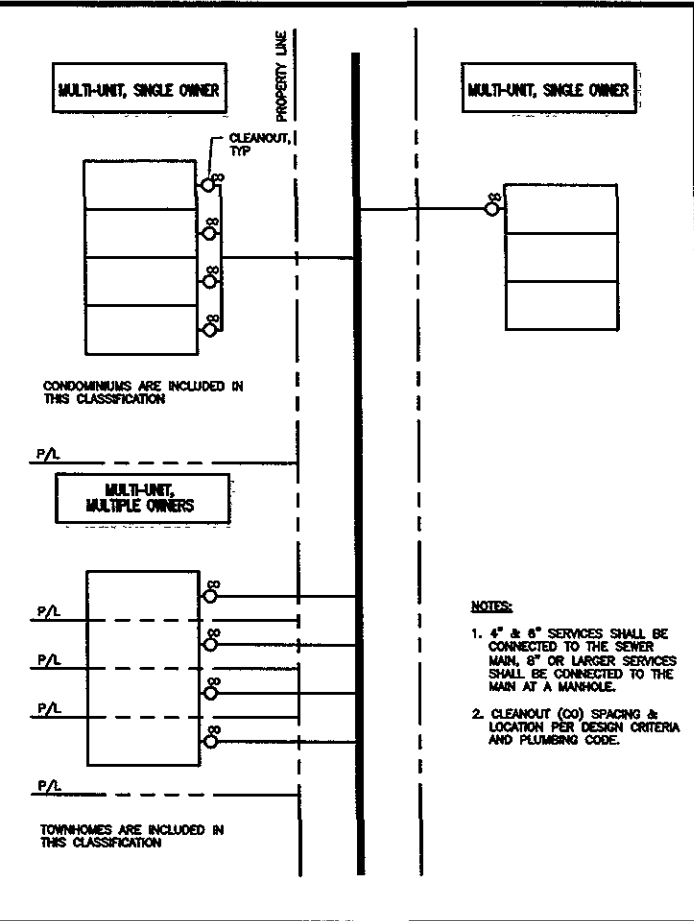
CITY OF RAPID CITY PUBLIC WORKS DEPARTMENT
STANDARD MANHOLE DETAIL WITH MONOLITHIC BASE (48" & 60")
 DATE: 8-1-07
 SEC. 9-1 SHT. 1



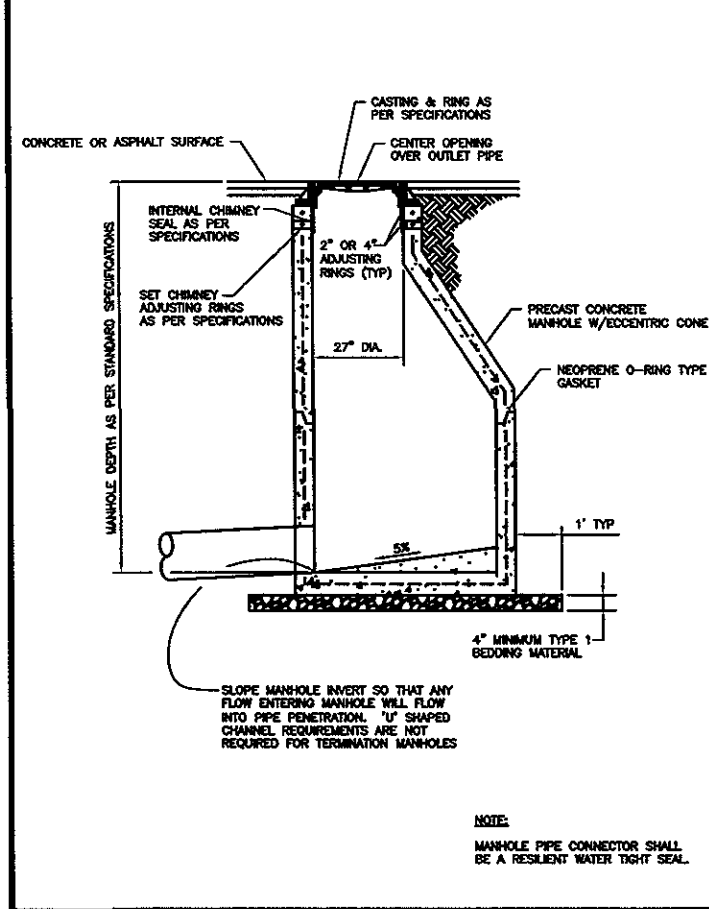
CITY OF RAPID CITY PUBLIC WORKS DEPARTMENT
DEEP SANITARY SERVICE CONNECTION
 DATE: 8-1-07
 SEC. 9-9 SHT. 1



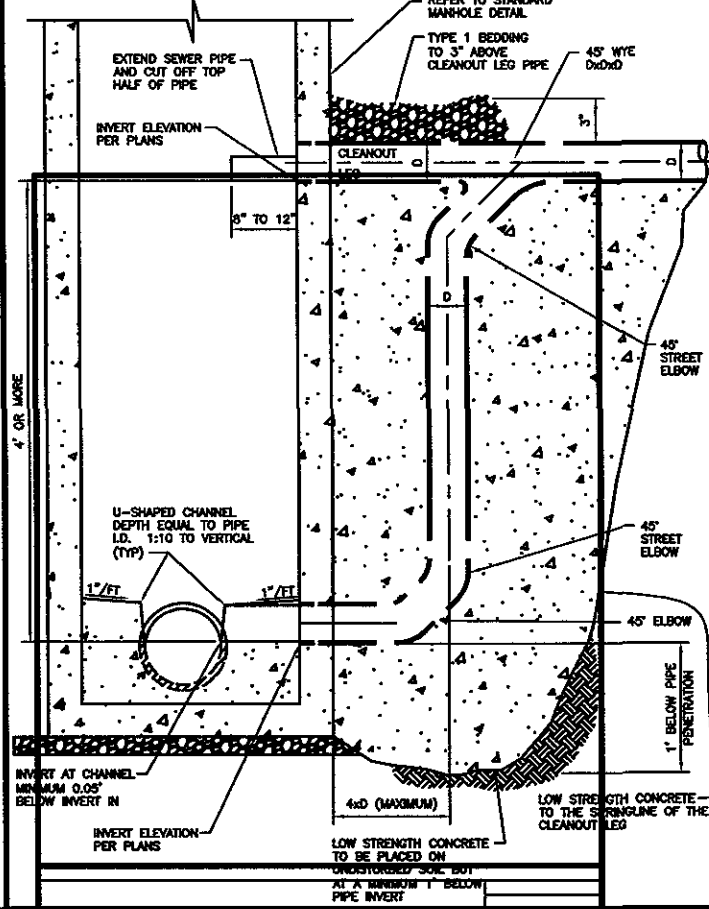
CITY OF RAPID CITY PUBLIC WORKS DEPARTMENT
SANITARY SEWER SERVICE CLEAN OUT DETAIL
 DATE: 8-1-07
 SEC. 9-10 SHT. 1



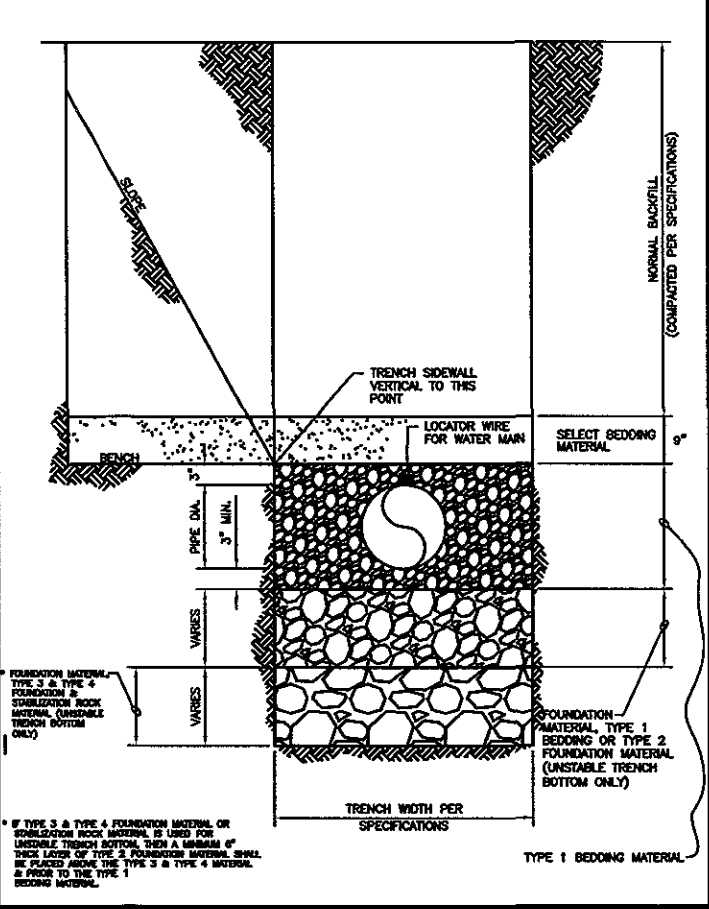
CITY OF RAPID CITY PUBLIC WORKS DEPARTMENT
TYPICAL SEWER SERVICE LINE LAYOUT
 DATE: 8-1-07
 SEC. 9-12 SHT. 1



CITY OF RAPID CITY PUBLIC WORKS DEPARTMENT
TERMINATION MANHOLE
 DATE: 8-1-07
 SEC. 9-13 SHT. 1



CITY OF RAPID CITY PUBLIC WORKS DEPARTMENT
STANDARD DROP MANHOLE DETAILS FOR INVERT CHANGES MORE THAN 4'
 DATE: 8-1-07
 SEC. 9-5 SHT. 1



CITY OF RAPID CITY PUBLIC WORKS DEPARTMENT
TRENCH DETAIL FOR WATER & SEWER MAIN
 DATE: 8-1-07
 SEC. 11-3 SHT. 1

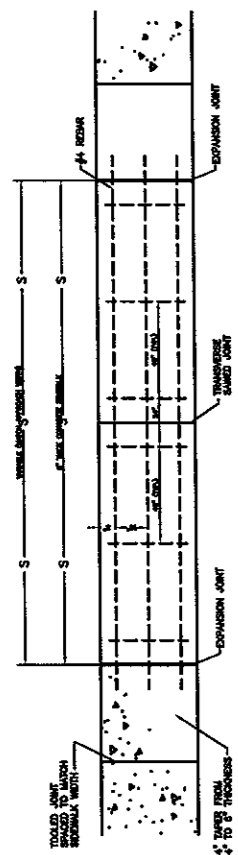


CITY OF RAPID CITY
 PUBLIC WORKS DEPARTMENT
 ENGINEERING SERVICES

Scale: 20'
 Designed By: LA
 Drawn By: MP
 Design Date: 12-10-08
 Internal Job No: SS08-1775
 Surveyed By: Survey Date
 SURVEYED BY SURVEY DATA
 Revisions

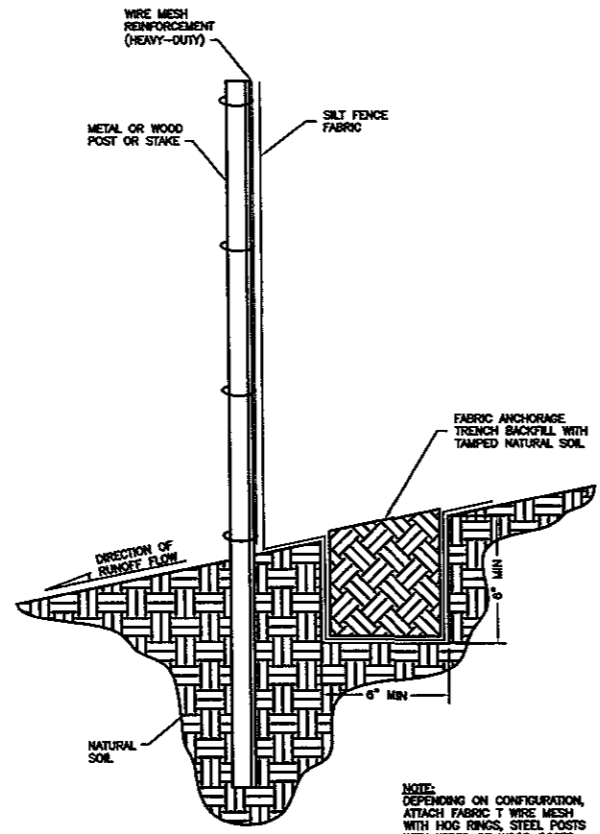
SOUTH STREET
 SANITARY SEWER EXTENSION

CITY OF RAPID CITY PROJECT NO. SS08-1775



6" REINFORCED SIDEWALK

REINFORCED SIDEWALK SHALL BE PLACED AT ALL ENTRANCES INTO ALLEYS, PARKING LOTS, AND PROPERTY WHICH IS ZONED COMMERCIAL, LIGHT INDUSTRIAL & HEAVY INDUSTRIAL. #4 EPOXY COATED REBAR SHALL BE PLACED AS PER DETAIL AND TIED TOGETHER. TWO INCH (2") CLEARANCE SHALL BE MAINTAINED BETWEEN BOTTOM OF CONCRETE & REBAR. MINIMUM DEPTH OF GRANULAR MATERIAL PLACED UNDER REINFORCED SIDEWALK SHALL BE 4".



NOTE: DEPENDING ON CONFIGURATION, ATTACH FABRIC TO WIRE MESH WITH HOC RINGS, STEEL POSTS WITH WIRES OR WOOD POSTS WITH STAPLES

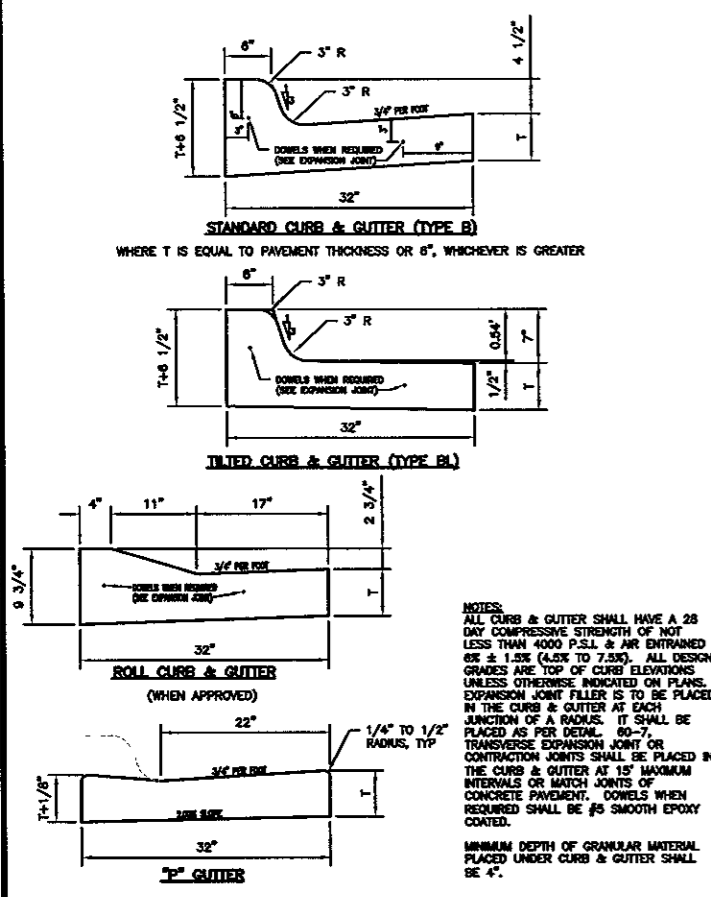
CITY OF RAPID CITY PUBLIC WORKS DEPARTMENT
 DATE: 6-1-07
 SEC. SHT. 61-3
REINFORCED SIDEWALKS (MULTI-FAMILY, ALLEY ENTR., INDUSTRIAL & COMMERCIAL APPLICATIONS)

CITY OF RAPID CITY PUBLIC WORKS DEPARTMENT
 DATE: 6-1-07
 SEC. SHT. 146-1
SILT FENCE INSTALLATION



CITY OF RAPID CITY
 PUBLIC WORKS DEPARTMENT
 ENGINEERING SERVICES

Scale: 20'
 Designed By: LA
 Drawn By: MP
 Design Date: 12-10-08
 Print Date: 12-10-08
 Internal Job No: SS08-1775
 Surveyed By: [Name]
 Survey Date: [Date]
 SURVEYED BY SURVEY DATA



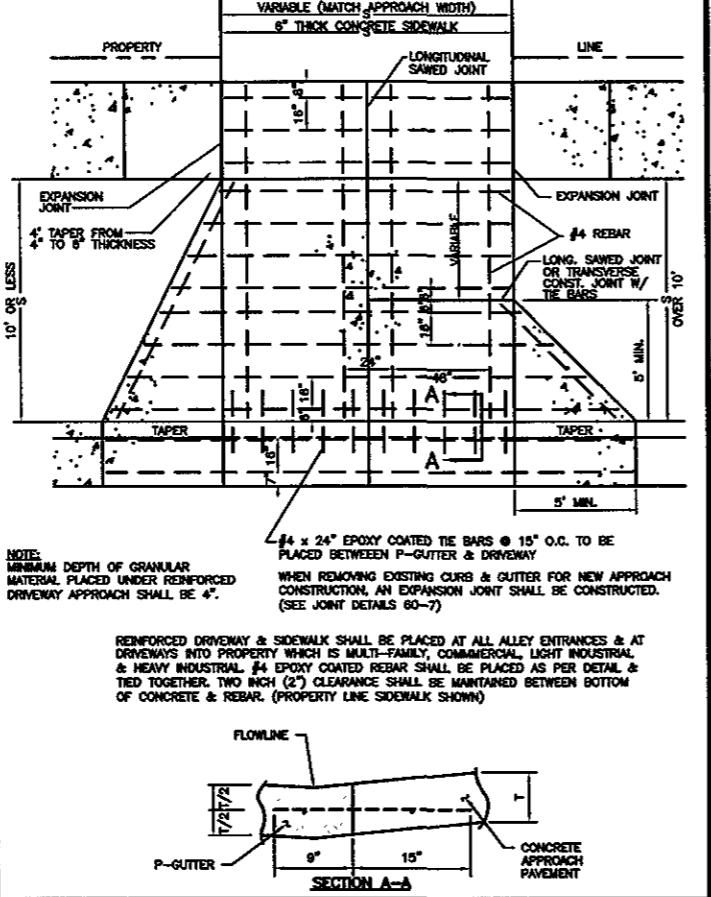
STANDARD CURB & GUTTER (TYPE B)
 WHERE T IS EQUAL TO PAVEMENT THICKNESS OR 6", WHICHEVER IS GREATER

TILTED CURB & GUTTER (TYPE B1)

ROLL CURB & GUTTER
 (WHEN APPROVED)

2" GUTTER

NOTES:
 ALL CURB & GUTTER SHALL HAVE A 28 DAY COMPRESSIVE STRENGTH OF NOT LESS THAN 4000 P.S.I. & AIR ENTRAINMENT 6% ± 1.5% (4.5% TO 7.5%). ALL DESIGN GRADES ARE TOP OF CURB ELEVATIONS UNLESS OTHERWISE INDICATED ON PLANS. EXPANSION JOINT FILLER IS TO BE PLACED IN THE CURB & GUTTER AT EACH JUNCTION OF A RADIUS. IT SHALL BE PLACED AS PER DETAIL. 60-7. TRANSVERSE EXPANSION JOINT OR CONTRACTION JOINTS SHALL BE PLACED IN THE CURB & GUTTER AT 15' MAXIMUM INTERVALS OR MATCH JOINTS OF CONCRETE PAVEMENT. DOWELS WHEN REQUIRED SHALL BE #5 SMOOTH EPOXY COATED.
 MINIMUM DEPTH OF GRANULAR MATERIAL PLACED UNDER CURB & GUTTER SHALL BE 4".

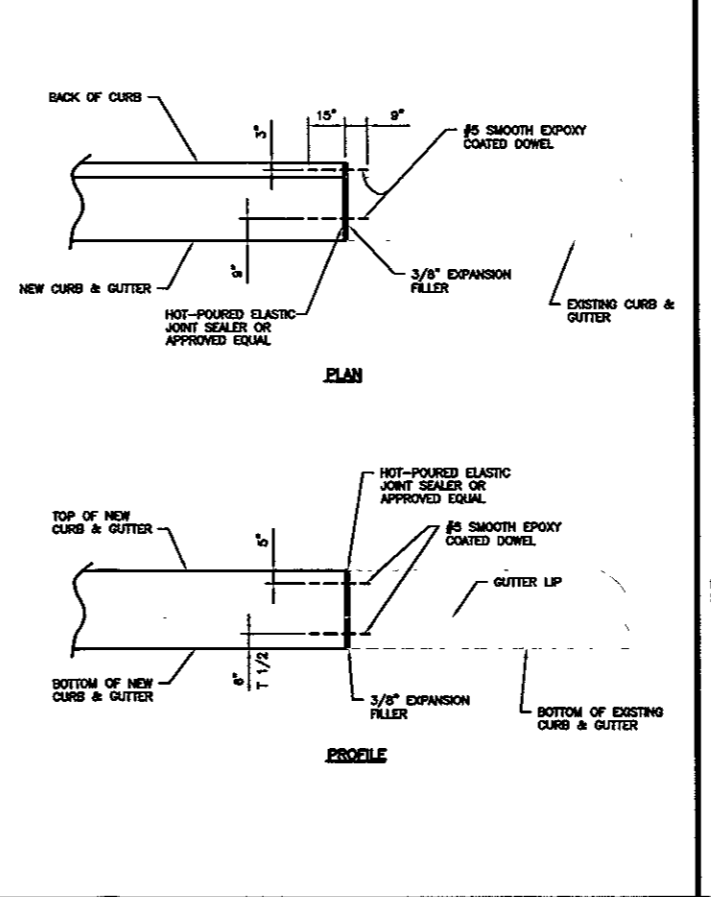


NOTE: MINIMUM DEPTH OF GRANULAR MATERIAL PLACED UNDER REINFORCED DRIVEWAY APPROACH SHALL BE 4".

#4 x 24" EPOXY COATED TIE BARS @ 15" O.C. TO BE PLACED BETWEEN P-GUTTER & DRIVEWAY

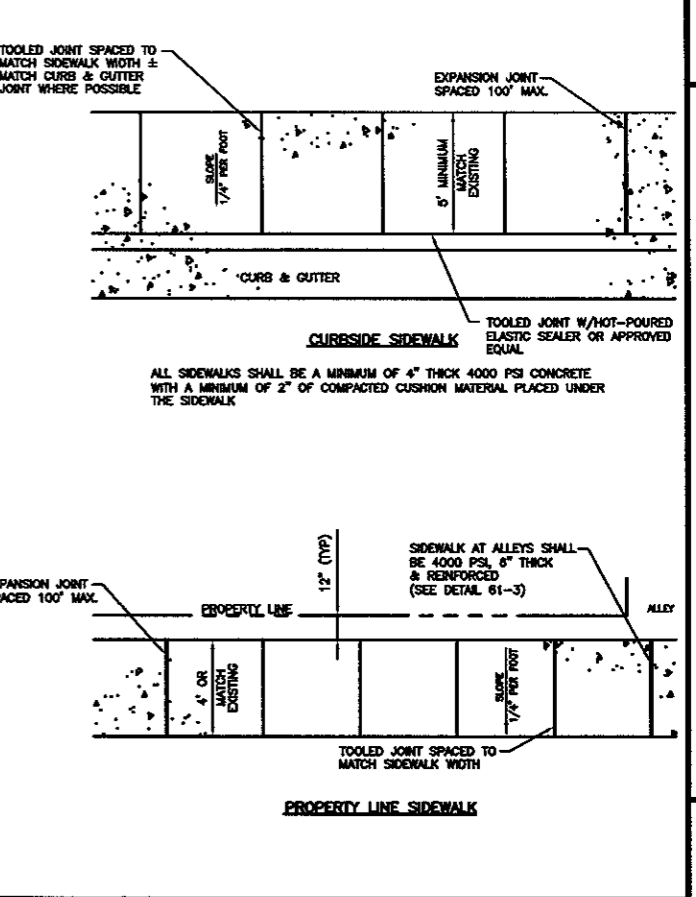
WHEN REMOVING EXISTING CURB & GUTTER FOR NEW APPROACH CONSTRUCTION, AN EXPANSION JOINT SHALL BE CONSTRUCTED. (SEE JOINT DETAILS 60-7)

REINFORCED DRIVEWAY & SIDEWALK SHALL BE PLACED AT ALL ALLEY ENTRANCES & AT DRIVEWAYS INTO PROPERTY WHICH IS MULTI-FAMILY, COMMERCIAL, LIGHT INDUSTRIAL & HEAVY INDUSTRIAL. #4 EPOXY COATED REBAR SHALL BE PLACED AS PER DETAIL & TIED TOGETHER. TWO INCH (2") CLEARANCE SHALL BE MAINTAINED BETWEEN BOTTOM OF CONCRETE & REBAR. (PROPERTY LINE SIDEWALK SHOWN)



PLAN

PROFILE



ALL SIDEWALKS SHALL BE A MINIMUM OF 4" THICK 4000 PSI CONCRETE WITH A MINIMUM OF 2" OF COMPACTED CUSHION MATERIAL PLACED UNDER THE SIDEWALK

CITY OF RAPID CITY PUBLIC WORKS DEPARTMENT
 DATE: 6-1-07
 SEC. SHT. 60-2
CURB & GUTTER

CITY OF RAPID CITY PUBLIC WORKS DEPARTMENT
 DATE: 6-1-07
 SEC. SHT. 60-4
REINFORCED DRIVEWAY APPROACH

CITY OF RAPID CITY PUBLIC WORKS DEPARTMENT
 DATE: 6-1-07
 SEC. SHT. 60-7
CURB & GUTTER EXPANSION JOINT

CITY OF RAPID CITY PUBLIC WORKS DEPARTMENT
 DATE: 6-1-07
 SEC. SHT. 61-2
SIDEWALKS

SOUTH STREET
 SANITARY SEWER EXTENSION

CITY OF RAPID CITY PROJECT NO. SS08-1775

Sheet Title: PROFILE SHEET

Sheet: 7 of 7

09SR029

STANDARD SPECIFICATIONS

STANDARD SPECIFICATIONS FOR THIS PROJECT SHALL BE THE CITY OF RAPID CITY STANDARD SPECIFICATIONS FOR PUBLIC WORKS CONSTRUCTION, 2007 EDITION, HERINAFTER REFERRED TO AS THE STANDARD SPECIFICATIONS.

PROJECT SEQUENCING

THE CONTRACTOR SHALL USE THE DRAWINGS FOR PROJECT SEQUENCING GUIDANCE

- 1) IMPLEMENT TRAFFIC CONTROL PLAN AND INSTALL MOVEABLE BARRIERS FOR PROPOSED EXCAVATION AREAS.
- 2) NO EXCAVATION, OR SEWER INSTALLATION MAY PROCEED UNTIL EROSION CONTROL DEVICES AND THE POLLUTION CONTROL PLAN ARE IMPLEMENTED.
- 3) THE CONTRACTOR IS RESPONSIBLE FOR SCHEDULING OF EROSION CONTROL.
- 4) COMPLETE SITE RESTORATION.

THE CONTRACTOR SHALL DEVELOP A CONSTRUCTION SCHEDULE AND SEQUENCE TO MEET THE GENERAL INTENT SCHEDULING OF EROSION CONTROL AND GRAVEL PLACEMENT SHALL BE SCHEDULED IN CONJUNCTION WITH THE WORK TO AVOID EROSION OF THE WORK AREA

THE CONTRACTOR SHALL SUBMIT THE PROPOSED SEQUENCE AND THE PROPOSED SCHEDULE NOT LESS THAN (7) WORKING DAYS PRIOR TO PRECONSTRUCTION MEETING.

COORDINATION AND SCHEDULING

A PRECONSTRUCTION MEETING WILL BE CONDUCTED AND THE CONTRACTOR SHALL SUBMIT A CONSTRUCTION SCHEDULE IN ACCORDANCE WITH SECTION 7.70 OF THE STANDARD SPECIFICATIONS. THE CONTRACTOR WILL BE REQUIRED TO ATTEND THIS AND OTHER PERIODIC MEETINGS WITH CITY PERSONNEL AND AFFECTED UTILITIES OWNERS FOR THE PURPOSE OF SCHEDULING AND COORDINATION DURING THE COURSE OF CONSTRUCTION. THE CONTRACTOR SHALL ALSO BE REQUIRED TO COORDINATE WITH THE CITY OF RAPID CITY UTILITY MAINTENANCE DEPARTMENT FOR SANITARY SEWER SERVICE LINE TAPS. THE ENGINEER WILL ESTABLISH FREQUENCY, TIME, AND LOCATION OF THE PERIODIC MEETINGS.

CONSTRUCTION STAKING

THE CONTRACTOR WILL BE RESPONSIBLE FOR THE ACCURATE CONSTRUCTION OF ALL WORK TO THE LINES, GRADES AND ELEVATIONS SHOWN ON THE DRAWINGS. THE ENGINEER WILL FURNISH BASIC SURVEY CONTROL AND LIMITED AMOUNTS OF CONSTRUCTION STAKING SERVICES FOR USE BY THE CONTRACTOR.

THE ENGINEER SHALL BE PROMPTLY NOTIFIED OF ANY DISCREPANCIES DISCOVERED DURING LAYOUT WORK. THE CONTRACTOR SHALL NOT MAKE CHANGES OR RELOCATIONS WITHOUT WRITTEN APPROVAL OF THE ENGINEER.

THE ENGINEER WILL PROVIDE THE FOLLOWING SURVEY CONTROL AND CONSTRUCTION STAKING:

1. IDENTIFY AND SET IF NECESSARILY CONTROL POINTS AND BENCH MARKS TO BE USED ON THE PROJECT
2. OFFSET STAKES AT ALL SEWER MANHOLES AND 100' INTERVALS
3. LOCATION OF REMOVAL LIMITS WITHIN THE PROJECT.

THE CONTRACTOR WILL BE RESPONSIBLE FOR DAILY TRENCH STAKING AND CONTROL FOR THE PURPOSES OF SEWER MAIN INSTALLATION BASED ON ENGINEER OFFSETS AND CONTROL. CONSTRUCTION STAKING SHALL BE INCIDENTAL TO THE ASSOCIATED ITEMS OF CONSTRUCTION.

CONSTRUCTION LIMITS

IN GENERAL, THE CONSTRUCTION LIMITS FOR THE PROJECT SHALL BE DEFINED AS FOLLOWS:

PROPERTY LINES, RIGHT-OF-WAY LINES, EXISTING UTILITY EASEMENT LINES, AND TEMPORARY CONSTRUCTION EASEMENT LINES SHALL BE THE CONSTRUCTION LIMITS UNLESS INDICATED OTHERWISE ON THE DRAWINGS OR FURTHER DEFINED HEREIN

CONTRACTOR SHALL CONFINE CONSTRUCTION WORK WITHIN THE CONSTRUCTION LIMITS DEFINED.

CONSTRUCTION ACTIVITIES SHALL BE RESTRICTED TO THE CONSTRUCTION LIMITS UNLESS PRIOR APPROVAL IS RECEIVED FROM THE ENGINEER. USE OF CITY LANDS FOR STAGING AREAS, MATERIAL STORAGE, SEDIMENTATION POND, DEWATERING, AND/OR TOPSOIL STOCKPILING SHALL ONLY BE WITH PRIOR APPROVAL FROM THE ENGINEER. ANY DAMAGES AND RESTORATION OUTSIDE THE CONSTRUCTION LIMITS SHALL BE AT THE CONTRACTOR'S EXPENSE

SUBMITTALS

THE TERM "SUBMITTALS" INCLUDES DRAWINGS, DIAGRAMS, DESCRIPTIVE LITERATURE, ILLUSTRATIONS, INSTRUCTIONS, SCHEDULES, PERFORMANCE AND TEST DATA, PRODUCT DATA SHEETS, MATERIAL SAFETY DATA SHEETS, AND SIMILAR MATERIALS BY A SUPPLIER OR CONTRACTOR TO ILLUSTRATE MATERIAL OR EQUIPMENT FOR SOME PORTION OF THE WORK

AT LEAST SEVEN (7) WORKING DAYS BEFORE HIS NEED FOR APPROVAL, THE CONTRACTOR SHALL FORWARD TO THE ENGINEER A MINIMUM OF FIVE (5) COPIES OF SUBMITTALS FOR ALL CONTRACTOR-FURNISHED PRODUCTS. SUBMITTALS SHALL CLEARLY IDENTIFY ANY DEVIATION FROM THE SPECIFICATIONS, AND SHALL BE CERTIFIED AND DATED BY THE CONTRACTOR. SUBMITTALS WILL BE ACCEPTED ONLY FROM THE CONTRACTOR. THE ENGINEER WILL INDICATE HIS APPROVAL OR DISAPPROVAL OF EACH SUBMITTAL AND, IF HE DOES NOT APPROVE THE SUBMITTAL, HE WILL INDICATE HIS REASONS FOR SO DOING. ANY WORK DONE PRIOR TO APPROVAL SHALL BE AT THE CONTRACTOR'S OWN EXPENSE. RESUBMITTALS SHALL BE MADE THE SAME AS FOR ORIGINAL SUBMITTALS WITH CHANGES FROM THE PREVIOUS SUBMITTAL CLEARLY SHOWN

THE LOG OF CONSTRUCTION SUBMITTALS SHALL INCLUDE BUT IS NOT LIMITED TO THE TABLE BELOW:

CONSTRUCTION SCHEDULE	SUBCONTRACTOR & SUPPLIER LIST
TRAFFIC CONTROL PLAN	KEY PERSONNEL
SANITARY SEWER MANHOLES	TACK COAT CERTIFICATION
SD DENR DEWATERING PERMIT	PVC SANITARY SEWER MAINS
IMPORTED BACKFILL MATERIAL	TYPE 1 BEDDING MATERIAL
TYPE 2 FOUNDATION MATERIAL	EROSION CONTROL PLAN
AGGREGATE BASE COURSE	ASPHALT CONCRETE MIX DESIGN
CONCRETE MANHOLES	OTHER SUBMITTALS

INCIDENTAL WORK

INCIDENTAL WORK SHALL INCLUDE ALL MISCELLANEOUS ITEMS NOT INCLUDED IN THE REGULAR ITEMS COVERED BY UNIT PRICES LISTED IN THE PROPOSAL AND SHOWN ON THE DRAWINGS, BUT WHICH MUST BE PERFORMED IN ORDER TO PROPERLY COMPLETE THE WORK.

THE ITEMS AND WORK LISTED BELOW ARE TO BE INCLUDED IN THE INCIDENTAL WORK ITEM, BUT THE LIST DOES NOT LIMIT THE SCOPE TO ONLY THOSE ITEMS. THE CONTRACTOR SHALL INCLUDE THOSE ITEMS THAT MAY BE SPECIFIC TO HIS CONSTRUCTION PROCEDURES

DUST CONTROL

OBTAIN PERMITS AS NEEDED

REMOVE AND RESET TRAFFIC SIGNS

MAINTAIN TEMPORARY SURFACING

STABILIZED CONSTRUCTION ENTRANCES

PROTECT OTHER UTILITIES FROM MOVEMENT DURING EXCAVATION

THE CONTRACTOR SHALL BE RESPONSIBLE FOR OBTAINING AND COMPLYING WITH THE RIGHT TO WORK PERMIT FOR THE PROJECT ALLOWING THE CONTRACTOR TO WORK IN THE RIGHT-OF-WAY. THE CONTRACTOR SHALL NOT BE CHARGED FOR THE PERMIT, AND OAK OBTAIN IT FROM THE CITY UTILITY MAINTENANCE DIVISION.

INCIDENTAL WORK SHALL BE PAID FOR UNDER THE LUMP SUM BID FOR "INCIDENTAL WORK"

TRAFFIC CONTROL

THE CONTRACTOR IS REQUIRED TO MAINTAIN TRAFFIC CONTROL IN ACCORDANCE WITH THE MANUAL OF UNIFORM TRAFFIC CONTROL DEVICES MUTCD AND AS SHOWN ON THE CONCEPTUAL TRAFFIC CONTROL PLAN (TCP). ALL TRAFFIC CONTROL SHALL CONFORM TO THE LATEST VERSION OF THE MUTCD.

THE CONTRACTOR SHALL PREPARE AND SUBMIT (NOT LESS THAN SEVEN (7) WORKING DAYS PRIOR TO PRECONSTRUCTION MEETING) A TOP INCLUDING PEDESTRIAN AND BICYCLE TRAFFIC TO THE ENGINEER FOR THE PROPOSED CONSTRUCTION. THE TOP SHALL BE PREPARED BY PERSONS REGULARLY INVOLVED IN PREPARATION OF TOPS, SHALL CONFORM TO THE LATEST REVISION OF THE MUTCD, AND SHALL BE DRAWN TO SCALE WITH DIMENSIONS SHOWN FOR PLACEMENT OF ALL TRAFFIC CONTROL DEVICES. TOP'S SHALL BE SUBMITTED FOR EACH PHASE OR PROJECT SEQUENCE AND TOP SHALL DEMONSTRATE CHANGES IN THE TOP FROM ONE PHASE TO THE NEXT.

FLAGGERS, PROPERLY ATTIRED AND PRECEDED BY PROPER SYMBOL SIGNS MAY BE REQUIRED TO SAFELY MAINTAIN TRAFFIC DURING WORK ACTIVITIES AND/OR EQUIPMENT PRESENTS A HAZARD TO WORKERS OR TRAFFIC, ENCLOSED INTO A LANE OPEN TO TRAFFIC, OR MAY BE REQUIRED TO SAFELY MAINTAIN TRAFFIC WHEN WORKING NEAR AN INTERSECTION.

THE CONTRACTOR IS REQUIRED TO HAVE A PERSON AVAILABLE 24 HOURS A DAY, 7 DAYS A WEEK TO MAINTAIN TRAFFIC CONTROL DEVICES. THE NAME AND TELEPHONE NUMBER OF THIS PERSON SHALL BE GIVEN TO THE ENGINEER AT THE PRE-CONSTRUCTION MEETING.

EXISTING SIGNS

ALL TRAFFIC CONTROL SIGNS REMOVED OR DAMAGED BY THE CONTRACTOR SHALL BE RESET OR REPLACED, AND SHALL BE INCIDENTAL TO THE TRAFFIC CONTROL BID ITEM.

UTILITY COMPANY NOTIFICATION

THE INFORMATION ON THESE DRAWINGS CONCERNING THE TYPE, SIZE AND LOCATION OF UTILITIES HAS BEEN BASED UPON THE INFORMATION AVAILABLE DURING TOPOGRAPHIC SURVEYS. SIZE AND TYPE OF UTILITIES WAS PROVIDED BY THE UTILITY OWNER. THE CONTRACTOR SHALL BE RESPONSIBLE FOR PROTECTING ALL EXISTING UTILITIES IN PLACE UNLESS THEY ARE SCHEDULED FOR RELOCATION. THE CONTRACTOR SHALL COORDINATE ALL WORK WITH THE UTILITY COMPANIES. NO ADDITIONAL PAYMENT WILL BE MADE FOR THIS WORK

THE CONTRACTOR SHALL UTILIZE THE SOUTH DAKOTA ONE CALL NOTIFICATION PROCESS TO PROVIDE ADVANCE NOTICE OF AT LEAST 48 HOURS, EXCLUDING WEEKENDS AND HOLIDAYS, TO INFORM ALL SOUTH DAKOTA UNDERGROUND FACILITY OPERATORS OF INTENDED EXCAVATION. THE CONTRACTOR SHALL CONTACT ALL UTILITY COMPANIES BEFORE WORK IS COMMENCED

EXISTING UTILITY CROSSINGS

REFER TO SPECIFICATIONS FOR CROSSING OF EXISTING STORM SEWERS, SANITARY SEWERS, WATER MAINS, AND WATER MAIN LINES. AT ALL LOCATIONS WHERE THE PROPOSED UTILITY IMPROVEMENT CROSSES OR IS ADJACENT TO EXISTING STORM SEWERS, SANITARY SEWERS OR WATER MAINS, THE CONTRACTOR SHALL BE RESPONSIBLE FOR SAFEGUARDING THE EXISTING UTILITIES TO ENSURE THAT THEY ARE NOT DISTURBED DURING THE WORK. TEMPORARY STRUCTURAL SUPPORT FOR THE UTILITIES MAY BE REQUIRED. NO SEPARATE PAYMENT SHALL BE MADE FOR CROSSED UTILITY PROTECTION. ANY REPAIR WORK NECESSARY TO A CROSSED UTILITY RESULTING FROM THE CONTRACTOR'S ACTIVITY SHALL BE AT THE CONTRACTOR'S EXPENSE.

EXISTING UTILITIES

LOCATION OF EXISTING UTILITIES SHOWN ON THESE DRAWINGS ARE APPROXIMATE AND WERE TAKEN FROM AVAILABLE RECORDS. PRIOR TO EXCAVATION, THE CONTRACTOR SHALL FIELD VERIFY EXACT LOCATION OF ALL UTILITIES WHETHER OR NOT SHOWN ON THESE DRAWINGS. CONTRACTOR SHALL PROTECT ALL UTILITIES DURING CONSTRUCTION. THE CONTRACTOR SHALL SUPPORT OR TUNNEL UNDER EXISTING UTILITIES IN A MANNER THAT THE EXISTING UTILITIES ARE NOT DAMAGED OR DISTURBED. UNLESS OTHERWISE NOTED, ANY DISTURBANCE OR REPLACEMENT OF EXISTING UTILITIES SHALL BE INCIDENTAL TO THE PROJECT. IF REQUIRED, THE CONTRACTOR SHALL COORDINATE RELOCATION OF UTILITY WITH THE UTILITY OWNER. ALL UTILITIES ARE TO BE ADJUSTED AND/OR RELOCATED BY THE RESPECTIVE UTILITY COMPANIES UNLESS OTHERWISE INDICATED IN THESE DRAWINGS.

PRE-PAVING MEETING

PRIOR TO BEGINNING PAVING OPERATIONS, THE CONTRACTOR SHALL SCHEDULE A MEETING TO CHECK THE BASE COURSE. THE CONTRACTOR'S SUPERINTENDENT, PAVING SUPERINTENDENT AND CITY INSPECTOR SHALL PARTICIPATE IN A CHECK OF THE CUSHION/BASE TO VERIFY THAT NO SOFT SPOTS ARE PRESENT. THE CONTRACTOR SHALL FURNISH HEAVY EQUIPMENT TO PROOF ROLL THE CUSHION/BASE. THE CITY INSPECTOR SHALL BE NOTIFIED AT LEAST 2 WORKING DAYS IN ADVANCE OF THE SCHEDULED BASE CHECK

PRIOR TO THE BASE COURSE CHECK, THE CONTRACTOR SHALL SCHEDULE AND COORDINATE A PRE-PAVING MEETING WITH THE PAVING CONTRACTOR'S SUPERINTENDENT, JOB FOREMAN, CONTRACTOR'S SUPERINTENDENT, CITY INSPECTOR AND ENGINEER PRIOR TO INITIATING PAVING ACTIVITIES. IT IS THE PAVING SUPERINTENDENT'S RESPONSIBILITY TO REVIEW PAVING REQUIREMENTS INCLUDING BUT NOT LIMITED TO TRUCK SCHEDULES, DELIVERY SCHEDULES, PAVEMENT SPEED SET FOR DELIVERIES, ACTIONS TO BE TAKEN IN THE EVENT OF PAVING INTERRUPTIONS, MAXIMUM PAVEMENT STOPPAGE PERMITTED FOR MIX AND SHOOTINESS, LAYDOWN TEMPERATURE, COMPACTION, ETC.. THESE ITEMS SHALL BE PRESENTED IN WRITING, DISTRIBUTED, AND REVIEWED AT THIS MEETING.

ASPHALT REMOVAL

THE CONTRACTOR SHALL REMOVE AND DISPOSE OF THE EXISTING ASPHALT PAVEMENT AS NOTED ON THE PLANS. REFER TO THE NOTE REGARDING "SAW CUTTING PAVEMENT" FOR ADDITIONAL INFORMATION REGARDING PAVEMENT SAW CUTTING. HOWEVER, DURING CONSTRUCTION, THE ENGINEER MAY DIRECT A LESSER OR GREATER REMOVAL LIMIT DUE TO THE PROXIMITY OF JOINTS, CRACKS OR OTHER CONDITIONS. REMOVAL AND REPLACEMENT BEYOND THE LIMITS SHOWN MAY BE AT THE CONTRACTOR'S EXPENSE UNLESS APPROVED BY THE ENGINEER. THE ASPHALT REMOVAL SHALL BE DELIVERED TO THE RAPID CITY LANDFILL. THE ASPHALT BETWEEN THE FIRST AND SECOND SAW CUT SHALL NOT BE REMOVED UNTIL IMMEDIATELY BEFORE THE PATCHING OPERATION BEGINS SO AS TO PROTECT THE EDGE FROM BREAKING

PAYMENT FOR REMOVING AND DISPOSING OF ASPHALT SHALL BE PAID FOR UNDER THE UNIT PRICE BID FOR "REMOVE ASPHALT PAVEMENT"

MATERIAL STOCKPILE IDENTIFICATION

THE CONTRACTOR SHALL CLEARLY IDENTIFY MATERIAL STOCKPILES SO THAT MATERIAL TYPES AND USES ARE CLEARLY IDENTIFIED, FOR EXAMPLE BEDDING, GRAVEL CUSHION, BASE COURSE, AND CUSHION GRAVEL FOR SIDEWALK, ETC. .

WASTE DISPOSAL

THE CONTRACTOR WILL BE RESPONSIBLE FOR ALL WASTE DISPOSAL ON THE PROJECT. THE CONTRACTOR SHALL FURNISH THE DISPOSAL SITE FOR THIS WORK AND THE LOCATION MUST BE APPROVED BY THE ENGINEER. NO WASTE DISPOSAL IS ALLOWED WITHIN RIGHT OF WAY OR EASEMENTS. NO PAYMENT WILL BE MADE FOR WASTE DISPOSAL

WASTE DISPOSAL SITE

THE CONTRACTOR SHALL FURNISH A SITE SATISFACTORY TO THE ENGINEER FOR THE DISPOSAL OF BROKEN CONCRETE, EXCESS DIRT, ROCK AND OTHER CONSTRUCTION/DEMOLITION DEBRIS GENERATED BY THIS PROJECT. THE WASTE DISPOSAL SITE MAY NOT BE A STREAM, STEAM BANK, LAKE, LAKE SHORE OR WETLAND, UNLESS THE CONTRACTOR HAS OBTAINED A "404 PERMIT" FROM THE U.S. ARMY CORP., OF ENGINEERS.

ASPHALT PAVEMENT REPLACEMENT SECTION

SOUTH STREET SHALL BE 6" OF AGGREGATE BASE COURSE AND 5" OF CLASS G, TYPE 1 ASPHALT CONCRETE THE ASPHALT BINDER FOR THE CLASS G, TYPE 1 ASPHALT CONCRETE SHALL BE PG 64-28.

TEMPORARY SURFACING

BACKFILLED AREAS OPENED TO TRAFFIC PRIOR TO PAVING AND PAVEMENT PATCHING, SHALL HAVE TEMPORARY GRAVEL SURFACING FOR DRIVEWAY ACCESS AND CROSS TRAFFIC AT INTERSECTING STREETS. SURFACING THICKNESS SHALL BE A MINIMUM OF 2" AND SHALL BE REMOVED AS NECESSARY, PRIOR TO PAVING, TO ACHIEVE FINAL GRADE FOR PAVEMENT. LABEL WEIGH TICKETS AS TEMPORARY SURFACING. THE ENGINEER MAY REQUIRE THE SURFACING TO BE REMOVED AND MAINTAINED PERIODICALLY. THE USE OF "TEMPORARY GRAVEL SURFACING" SHALL BE AUTHORIZED BY THE ENGINEER PRIOR TO PLACEMENT

BASE COURSE

AGGREGATES FOR BASE COURSE SHALL BE 3/4" LIMESTONE LEDGE ROCK AND SHALL CONFORM TO THE REQUIREMENTS IN SECTION 117 OF THE STANDARD SPECIFICATIONS.

ESTIMATED QUANTITIES WERE BASED UPON AN ASSUMED IN PLACE DENSITY OF 150 LB/CU FT.

SAW CUTTING PAVEMENT

PAVEMENT AREAS TO BE REMOVED ARE SHOWN ON THE DRAWINGS. THESE AREAS REPRESENT THE FINAL PAVEMENT SAW CUT AND REMOVAL LIMITS. THE FIRST PAVEMENT SAW CUT FOR SHALL BE MADE AT LEAST 1 FOOT INSIDE OF THE LINES SHOWN. SAW CUTTING OF THE PAVEMENT AREAS SHALL BE IN ACCORDANCE WITH THE STANDARD SPECIFICATIONS. INITIAL SAW CUTTING SHALL BE PAID FOR UNDER THE ITEM "SAWING" FINAL SAW CUTTING SHALL BE CONSIDERED AS INCIDENTAL TO THE APPROPRIATE PAVEMENT BID ITEM.

CONCRETE REMOVAL

THE CONTRACTOR SHALL REMOVE AND DISPOSE OF THE EXISTING CONCRETE PAVEMENT AS NOTED ON THE PLANS. REFER TO THE NOTE REGARDING "SAW CUTTING PAVEMENT" FOR ADDITIONAL INFORMATION REGARDING PAVEMENT SAW CUTTING. HOWEVER, DURING CONSTRUCTION, THE ENGINEER MAY DIRECT A LESSER OR GREATER REMOVAL LIMIT DUE TO THE PROXIMITY OF JOINTS, CRACKS OR OTHER CONDITIONS. REMOVAL AND REPLACEMENT BEYOND THE LIMITS SHOWN MAY BE AT THE CONTRACTOR'S EXPENSE UNLESS APPROVED BY THE ENGINEER. THE CONCRETE BETWEEN THE FIRST AND SECOND SAW CUT SHALL NOT BE REMOVED UNTIL IMMEDIATELY BEFORE THE PATCHING OPERATION BEGINS SO AS TO PROTECT THE EDGE FROM BREAKING

PAYMENT FOR REMOVING AND DISPOSING OF CONCRETE SHALL BE PAID FOR UNDER THE UNIT PRICE BID FOR "REMOVE CONCRETE PAVEMENT"

EROSION AND WATER POLLUTION CONTROL

THE CONTRACTOR IS SOLELY RESPONSIBLE FOR THE DEVELOPMENT, PROCUREMENT, AND IMPLEMENTATION OF A SOUTH DAKOTA DEPARTMENT OF ENVIRONMENT AND NATURAL RESOURCES (DENR) "STORM WATER" PERMIT FOR STORM WATER DISCHARGES ASSOCIATED WITH CONSTRUCTION ACTIVITIES, AND/OR A CITY OF RAPID CITY EROSION & SEDIMENT CONTROL PLAN. THE CONTRACTOR SHALL PREPARE AN EROSION AND SEDIMENT CONTROL PLAN. A STABILIZED ENTRANCE, INLET PROTECTION, RUNOFF TO ADJACENT STREETS, ETC. SHOULD BE CONSIDERED AS NEEDED IN AN EFFECTIVE EROSION CONTROL PLAN.

THE CONTRACTOR IS ADVISED THAT SEVERAL AGENCIES HAVE THE AUTHORITY TO "STOP WORK" IF THE POLLUTION PREVENTION CONTROL IS NOT IMPLEMENTED OR IS NOT IN EFFECTIVE. NO COMPENSATION WILL BE FORTHCOMING FOR "TIME LOST" DUE TO A "STOP WORK" ORDER.

MAINTENANCE AND REPAIR OF EROSION CONTROL DEVICES SHALL BE THE RESPONSIBILITY OF THE CONTRACTOR. INSPECT EROSION CONTROL DEVICES AT LEAST ONCE A WEEK AND AFTER EACH RAINFALL. REMOVE SILT DEPOSITS ONCE THEY REACH 30 PERCENT OF THE HEIGHT OF THE DEVICE TO PROVIDE STORAGE VOLUME FOR THE NEXT RAIN. MAINTENANCE AND REPAIR OF THE EROSION CONTROL DEVICES SHALL BE INCIDENTAL TO THE UNIT PRICE BID FOR THE APPROPRIATE BID ITEM. THE CONTRACTOR SHALL BE RESPONSIBLE FOR REMOVING EROSION CONTROL DEVICES WHEN DIRECTED BY THE ENGINEER.

INLET AND OUTLET PROTECTION SHALL BE ANY EROSION OR SEDIMENT CONTROL DEVICE WHICH PREVENTS SEDIMENT FROM ENTERING THE STORM SEWER SYSTEM OR CULVERT OR PREVENTS EROSION AT THE DISCHARGE POINT OF A CULVERT.

AS CONSTRUCTION MAY DEVIATE FROM THE DESIGN PLAN, ADDITIONAL EROSION AND SEDIMENT CONTROL SHALL BE USED TO PREVENT SEDIMENT FROM BEING TRANSPORTED FROM THE DISTURBED CONSTRUCTION AREAS.

ALL SEDIMENT FROM CONSTRUCTION ACTIVITIES SHALL BE REMOVED FROM THE SURROUNDING STREETS WITHIN 24 HOURS OF DEPOSIT.

ALL EROSION AND SEDIMENT CONTROL DEVICES SHALL BE MAINTAINED AND REPAIRED PER MANUFACTURERS RECOMMENDATIONS BY THE CONTRACTOR DURING THE CONSTRUCTION PHASE AS NEEDED TO ENSURE CONTINUED PERFORMANCE OF THEIR INTENDED FUNCTION. ALL DEVICES SHALL BE INSPECTED ONE TIME PER WEEK AND AFTER EACH HEAVY PRECIPITATION OR SNOW MELT EVENT THAT RESULTS IN RUNOFF.

EROSION & SEWER CONTROL DEVICES SHALL BE SUBMITTED TO THE PROJECT MANAGER AS SHOP DRAWINGS FOR APPROVAL.

EROSION CONTROL

EROSION CONTROL BLANKET SHALL BE PLACED ON ALL SLOPES STEEPER THAN 3:1 AND AS DETAILED IN THE PROJECT DOCUMENTS. EROSION CONTROL BLANKET SHALL BE CATEGORY 2 AS DETAILED IN SECTION 148 OF THE STANDARD SPECIFICATIONS

EROSION CONTROL BLANKET SHALL CONSIST OF A UNIFORM WEB OF INTERLOCKING FIBERS WITH NET BACKING THE NET BACKING SHALL CONSIST OF POLYPROPYLENE MESH. FOR CATEGORY 2 AND 3 BLANKETS, THE NETTING SHALL CONTAIN SUFFICIENT UV STABILIZATION FOR BREAKDOWN TO OCCUR WITH IN A NORMAL GROWING SEASON

EROSION CONTROL BLANKET SHALL BE INSTALLED PER THE MANUFACTURER'S RECOMMENDATION AND SHALL BE PAID FOR ON A SQUARE YARD BASIS. MEASUREMENT OF OVERLAP AND TOP AND BOTTOM FOLDS WILL NOT BE MADE

DEWATERING PERMITS

DEWATERING ACTIVITIES SHALL BE CONDUCTED IN ACCORDANCE WITH THE STANDARD SPECIFICATIONS SECTION 11.3 AND IN ACCORDANCE WITH THE FOLLOWING ADDITIONAL REQUIREMENTS.

DEWATERING ACTIVITIES SHALL BE CONDUCTED IN COMPLIANCE WITH THE "GENERAL PERMIT TO DISCHARGE UNDER THE SURFACE WATER DISCHARGE SYSTEM FOR TEMPORARY DEWATERING ACTIVITIES IN SOUTH DAKOTA", SDENR PERMIT NO. SDG 070000. A COPY OF THE PERMIT IS AVAILABLE THROUGH SDENR. THE CONTRACTOR IS REQUIRED TO FURNISH THE "REQUEST FOR AUTHORIZATION" TO DENR REQUIRED UNDER THE PERMIT AND FOR EACH SCHEDULE, OBTAIN DENR AUTHORIZATION, AND FURNISH A SEPARATE COPY OF AUTHORIZATION TO THE RESPECTIVE OWNER AT THE PRECONSTRUCTION CONFERENCE. THE CONTRACTOR IS RESPONSIBLE FOR PERFORMING SELF-MONITORING ACTIVITIES INCLUDING SAMPLING, TESTING AND REPORTING AS MAY BE DETERMINED TO BE REQUIRED UNDER THE AUTHORIZATION TO DISCHARGE. PAYMENT FOR OBTAINING THE NECESSARY AUTHORIZATION TO DISCHARGE, AND FOR ALL COMPLIANCE ACTIVITIES AND OBLIGATIONS BY THE CONTRACTOR SHALL BE ABSORBED INTO THE ITEM TO WHICH IT RELATES. NO ADDITIONAL PAYMENT WILL BE MADE.

WATER FOR COMPACTION

THE CONTRACTOR SHALL BE RESPONSIBLE FOR PROVIDING WATER FOR COMPACTION OF GRANULAR MATERIALS AND TRENCH BACKFILL AS REQUIRED. THERE WILL BE NO SEPARATE PAYMENT FOR WATER FOR COMPACTION. THE COSTS FOR PURCHASING, LOADING, TRANSPORTING AND APPLYING WATER SHALL BE INCIDENTAL TO THE VARIOUS ITEMS WHERE WATER IS REQUIRED. THE CONTRACTOR WILL BE REQUIRED TO PURCHASE WATER AND PAY FOR METER INSTALLATION IF THE WATER IS PURCHASED FROM THE CITY OF RAPID CITY.

WATER FOR COMPACTION OF GRANULAR MATERIAL SHALL BE INCIDENTAL TO THE CONTRACT UNIT PRICE FOR THE VARIOUS GRANULAR MATERIALS. THE MOISTURE CONTENT OF THE GRANULAR MATERIALS SHALL BE WITHIN 3% OF OPTIMUM MOISTURE UNLESS OTHERWISE REQUIRED BY THE ENGINEER.

PERMIT FOR THE RAPID CITY AIR QUALITY CONTROL DISTRICT

THE CONTRACTOR SHALL COMPLY WITH THE REQUIREMENTS OF SECTION 7.28 OF THE STANDARD SPECIFICATIONS REGARDING DUST CONTROL. DUST CONTROL PERMITS SHALL BE OBTAINED PRIOR TO BEGINNING WORK. THE CONTRACTOR SHALL PERFORM WATERING AND CLEANING OPERATIONS NECESSARY TO COMPLY WITH THE PERMIT. STABILIZATION CONSTRUCTION ENTRANCES SHALL BE USED FOR ACCESS.

ALL COSTS ASSOCIATED WITH DUST CONTROL AND STABILIZED CONSTRUCTION ENTRANCES ARE CONSIDERED INCIDENTAL WORK TO THE PROJECT.

TRENCH EXCAVATION AND BACKFILL

THE CONTRACTOR SHALL BE RESPONSIBLE FOR MAINTAINING A SAFE EXCAVATION COMPLYING WITH APPLICABLE STATE AND FEDERAL REGULATIONS. IT IS POSSIBLE THAT IN SOME AREAS SPECIAL FOUNDATIONS MAY BE REQUIRED TO PROVIDE ADEQUATE SUPPORT FOR THE PIPE. SUCH FOUNDATIONS WILL CONSIST OF SUB-EXCAVATION TO A DEPTH AS REQUIRED BY THE ENGINEER AND PLACEMENT OF TYPE 2 OR TYPE 3 FOUNDATION MATERIAL

SELECT BEDDING MATERIAL PER STANDARD SPECIFICATION SECTION 11 IS REQUIRED FROM 3" ABOVE THE PIPE TO 24 INCHES ABOVE THE PIPE. STONES AND ROCKS UP TO 12 INCHES IN THEIR LONGEST DIMENSION MAY BE INCLUDED IN THE BACKFILL 24 INCHES ABOVE THE PIPE.

CONCRETE CURB & GUTTER

CONCRETE CURB & GUTTER TO BE REMOVED AND REPLACED IS SHOWN ON THE DRAWINGS. HOWEVER, DURING CONSTRUCTION, THE ENGINEER MAY DIRECT A LESSER OR GREATER REMOVAL LIMIT DUE TO THE PROXIMITY OF CONCRETE JOINTS OR OTHER CONDITIONS. REMOVAL AND REPLACEMENT SHALL BE IN ACCORDANCE WITH THE STANDARD SPECIFICATIONS

CONCRETE SIDEWALK

CONCRETE SIDEWALK TO BE REMOVED AND REPLACED IS SHOWN ON THE DRAWINGS. REMOVAL AND REPLACEMENT BEYOND THE LIMITS SHOWN SHALL BE AT THE CONTRACTOR'S EXPENSE. HOWEVER, DURING CONSTRUCTION, THE ENGINEER MAY DIRECT A LESSER OR GREATER REMOVAL LIMIT DUE TO THE PROXIMITY OF CONCRETE JOINTS OR OTHER CONDITIONS. REMOVAL AND REPLACEMENT SHALL BE IN ACCORDANCE WITH THE STANDARD SPECIFICATIONS. NEW CONCRETE SIDEWALK SHALL BE PLACED ON 2" GRAVEL CUSHION OR BASE COURSE. THE CONTRACTOR SHALL DOCUMENT THE QUANTITY OF GRAVEL CUSHION USED BY SUBMITTING WEIGHT TICKETS TO THE INSPECTOR.

SEEDING, FERTILIZING AND MULCHING

SEED, FERTILIZE AND MULCH AREAS AS NOTED ON THE PLAN'S, AND IN ACCORDANCE WITH SECTIONS 70, 71 AND 72 OF THE STANDARD SPECIFICATIONS. IRRIGATED LAWN MIX OR NON-IRRIGATED LAWN MIX GRASS SEED SHALL BE USED AS SPECIFIED ON THE PLANS.

MATERIAL TICKET SUBMITTALS AND STOCKPILES

THE CONTRACTOR SHALL SUBMIT ALL TICKETS FOR MEASUREMENT AND PAYMENT TO THE INSPECTOR WITHIN 48 HOURS, PER STANDARD SPECIFICATIONS. ANY TICKET RECEIVED LATER THAN 48 HOURS WILL NOT BE ACCEPTED AND PAYMENT FOR THAT ITEM WILL NOT BE MADE. ALL TICKETS SHALL ACCOMPANY THE MATERIAL TO THE SITE. NO HAND WRITTEN TICKETS SHALL BE ALLOWED.

THE CONTRACTOR SHALL CLEARLY IDENTIFY MATERIALS FOR VARIOUS PRODUCTS USED ON THE PROJECT, SUCH AS: BEDDING, GRAVEL SURFACING, ETC.

AS-BUILT PLANS

THE CONTRACTOR SHALL MEASURE AND RECORD ANY HORIZONTAL OR VERTICAL DEVIATIONS FROM THE CONTRACT DRAWINGS. THE CHANGES SHALL BE RECORDED IN AN ACCURATE, NEAT FASHION ON THE DRAWINGS AND FURNISHED TO THE ENGINEER UPON COMPLETION OF THE PROJECT. SPECIFICALLY, ALL SERVICE TAPS, AND CONNECTIONS SHALL BE RECORDED FOR THE WORK. THE AS-BUILT DRAWINGS SHALL BE ON-SITE AND AVAILABLE FOR REVIEW BY THE ENGINEER UPON REQUEST.

WARRANTY PERIOD

THE WARRANTY PERIOD FOR THIS PROJECT SHALL START WHEN THE PROJECT IS COMPLETE AND SHALL NOT BE BASED ON COMPLETION OF DIFFERENT PHASES OR COMPLETION DATES OF THE PROJECT.



CITY OF RAPID CITY
ENGINEERING SERVICES
PUBLIC WORKS DEPARTMENT

Prepared By



Scale

20'

Designed By

LA

Design Date

Print Date

Internal Job No

SS08-1775

Surveyed By

Survey Data

Revisions

Sheet

2 of 7

GENERAL
NOTES
PROFILE

Sheet Title

Sheet

2 of 7