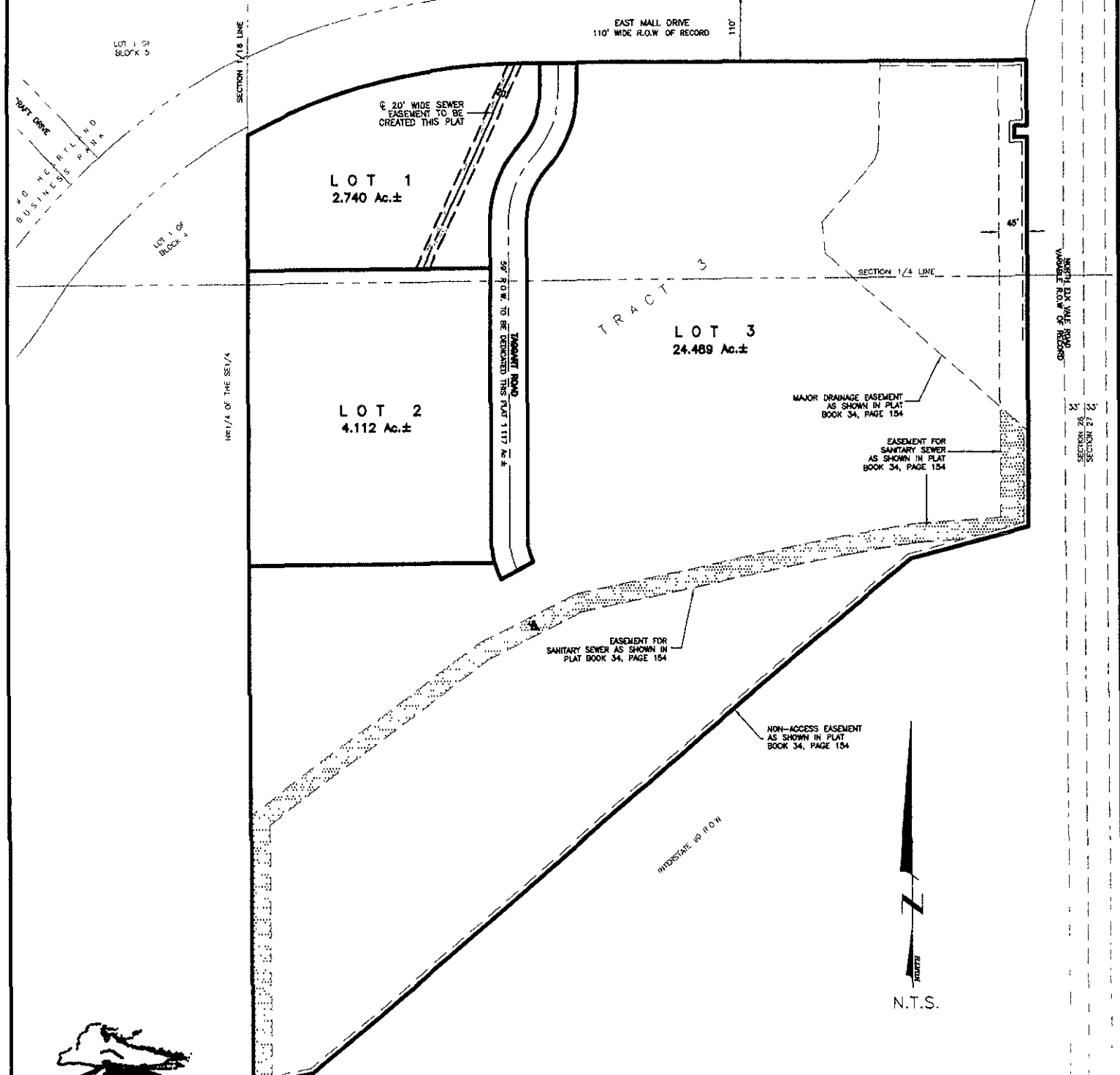


PLAT OF
**LOTS 1, 2 AND 3 OF TRACT 3,
 DISCOVERY SUBDIVISION**
 (formerly Tract 3 of Discovery Subdivision)
 LOCATED IN THE NE1/4 OF THE SE1/4
 AND IN THE SE1/4 OF THE NE1/4
 SECTION 28, T2N, R8E, BHM
 RAPID CITY, PENNINGTON COUNTY, SOUTH DAKOTA



CITY HALL 1903

Renner & Associates, LLC.

616 Sixth St. * Rapid City, SD 57701 * 605/721-7310
 FAX: 605/721-7313 * E-MAIL: Gary@RennerAssoc.com
 * Spearfish 605/717-0016 *

#2239.36