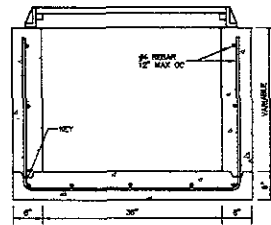
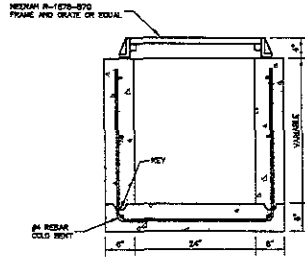


TOP VIEW



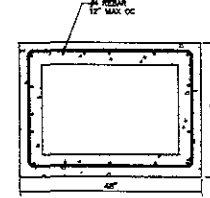
FRONT VIEW

CONSTRUCT INLET IN ACCORDANCE WITH CITY OF RAPID CITY SPECIFICATIONS FOR PUBLIC WORKS CONSTRUCTION

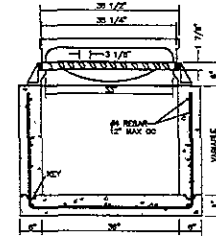


SIDE VIEW

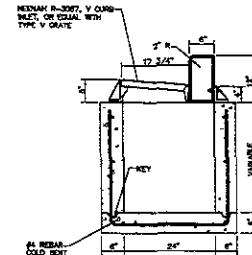
TYPE "A" INLET
NOT TO SCALE



TOP VIEW

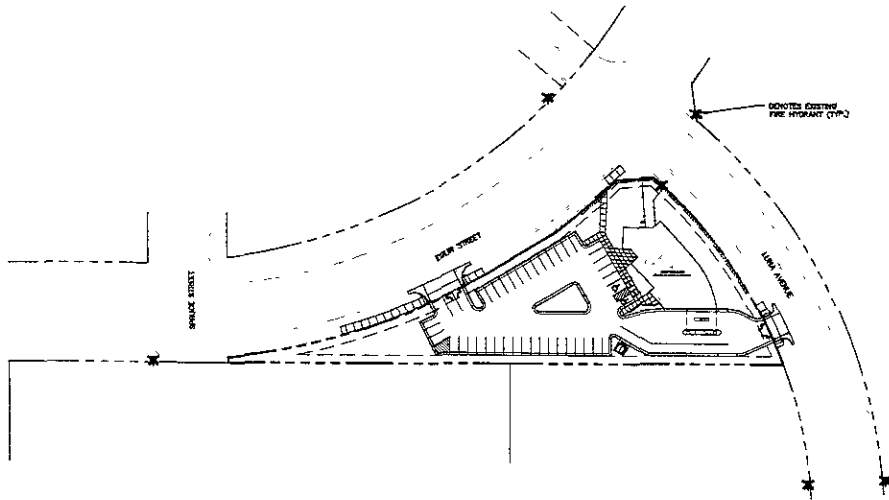


FRONT VIEW

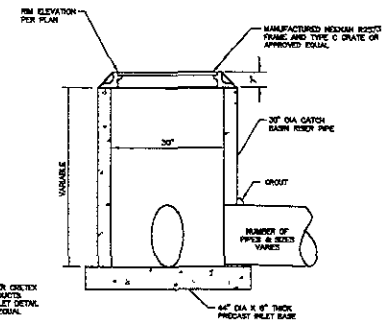


SIDE VIEW

TYPE "B" INLET
NOT TO SCALE



FIRE HYDRANT LOCATION MAP
1"=50'



INLET TO BE FOR CONCRETE PRECAST WITH SMALL INLET DETAIL OR APPROVED EQUAL

TYPE 30 STORM INLET
NOT TO SCALE

NOT FOR CONSTRUCTION

File Number: 080115
Location: SD / A SECTION 30
Date: FEBRUARY 2008
Checked By: JZ

CONQUEST DEVELOPMENT
NEW BUILDING
RAPID CITY, SD

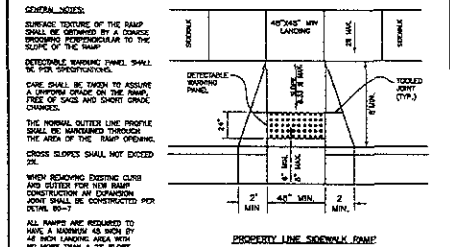
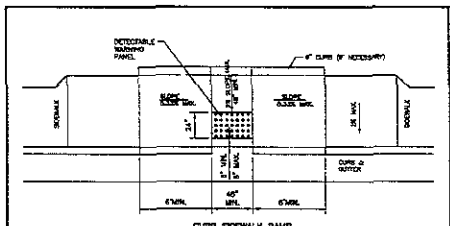
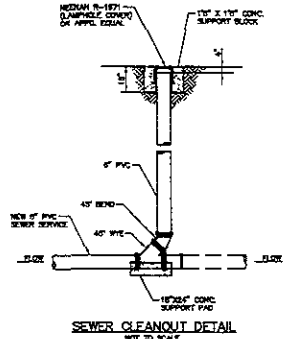
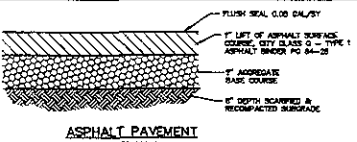
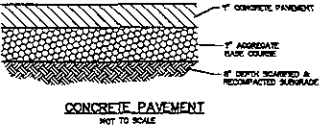
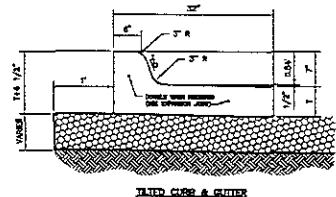
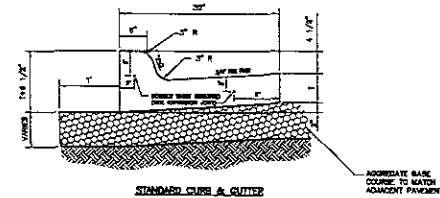
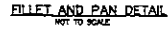
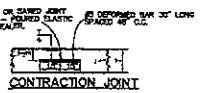
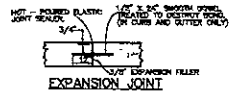
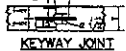
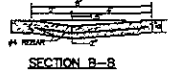
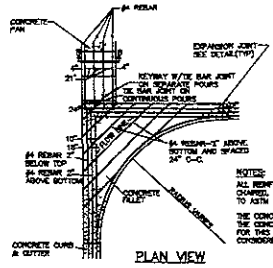
Revision / Date

Sheet Name:

DETAILS

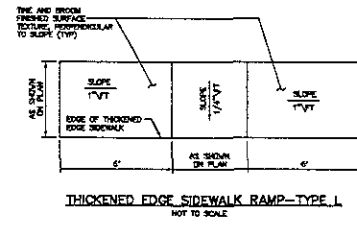
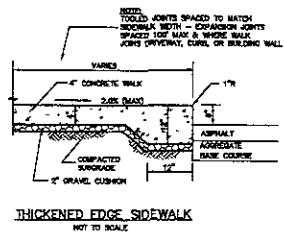
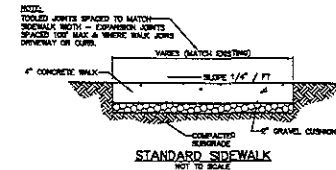
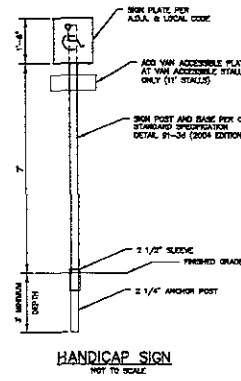
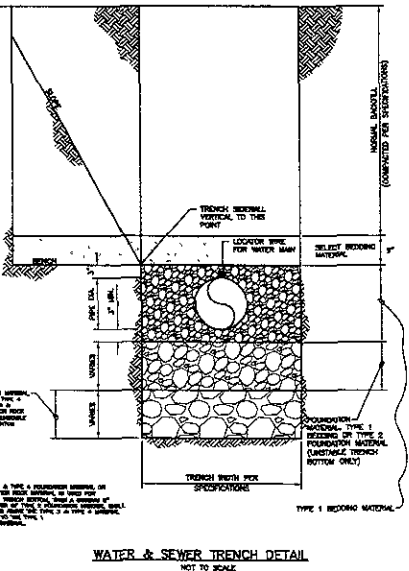
Sheet Number:

C5 of C5



HANDICAP ACCESS RAMPS

CITY OF RAPID CITY PUBLIC WORKS DEPARTMENT
 DATE 5-1-07
 SSC SHT
 61-5



NOT FOR CONSTRUCTION

File Number: 200516
 Location: SE 1/4 SECTION 30 T2N R2E S2W
 Drawn by: JLS/SP
 Checked by: JLS/SP

CONQUEST DEVELOPMENT NEW BUILDING RAPID CITY, SD