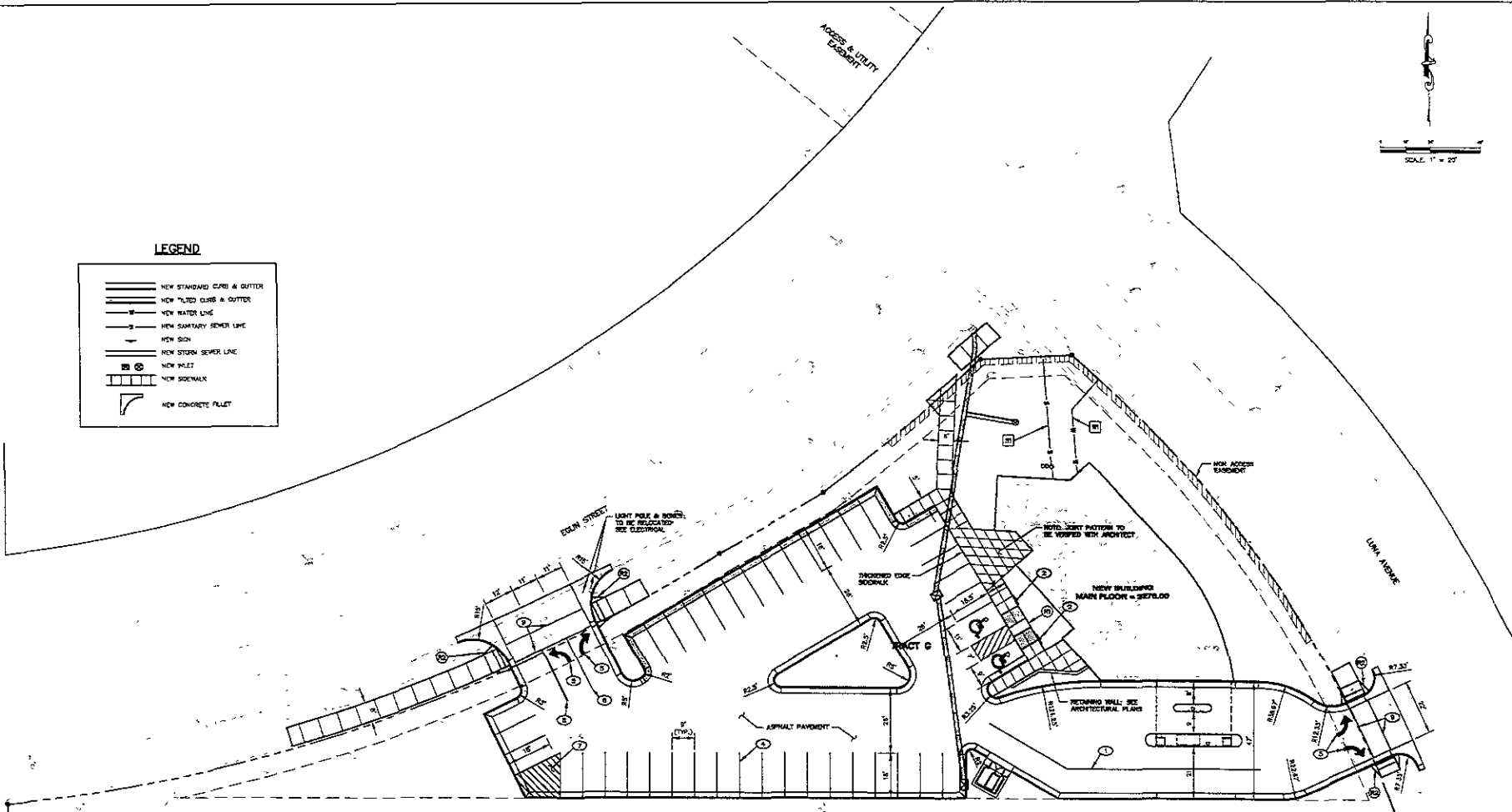


LEGEND

	NEW STANDING CURB & GUTTER
	NEW TILED CURB & GUTTER
	NEW WATER LINE
	NEW SANITARY SEWER LINE
	NEW SIDEWALK
	NEW STORM SEWER LINE
	NEW MANHOLE
	NEW SIDEWALK
	NEW CONCRETE INLET

SPRUCE STREET



FMG, Inc.
 3700 Spruce Road
 Rapid City, SD 57701
 (605) 342-1100 FAX (605) 342-4222



NOT FOR CONSTRUCTION

File Number	090016
Location	201A SECTION 30 T2N R5E 81W
Surveyed By	DR/ML/CP FEBRUARY 2002
Designed By	JST
Drawn By	KW/200
Checked By	JST

**CONQUEST DEVELOPMENT
 NEW BUILDING
 RAPID CITY, SD**

TRACT A

SIDEWALK RAMP CALLOUTS

	TYPE 1 RAMP
	SIDEWALK RAMP WITH DETECTABLE WARNING PANEL CITY DETAIL #R-3

WATER AND SEWER CALLOUTS

	8" PVC WATER LINE, CONNECT TO EXISTING SEE AT FIRE HYDRANT
	8" PVC SANITARY SEWER & CLEANOUT, CONNECT TO EXISTING SEE, VERIFY LOCATION & DEPTH

TRACT B

PAVEMENT MARKING AND SIGN CALLOUTS

- 1 PAINTED WHITE STRIPE
- 2 ADA SIGN, NORTH STALL TO HAVE VAN PLATE
- 3 ADA PAINTED SYMBOL AND ARCS
- 4 PAINTED WHITE PARKING STRIPE (TYP) (4')
- 5 PAINTED DIRECTIONAL ARROW
- 6 PAINTED WHITE STRIPE (4')
- 7 PAINTED WHITE ISLAND
- 8 DOUBLE PAINTED YELLOW STRIPE (4')
- 9 PAINTED WHITE STRIPE (12')

NOTE: SEE ARCHITECTURAL PLANS FOR TRAFFIC CONTROL & DIRECTIONAL SIGNS

Revision / Date
 Sheet Name:
LAYOUT PLAN
 Sheet Number
C2 of C5