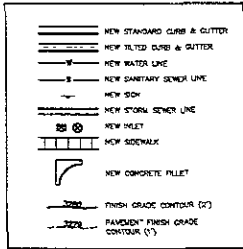
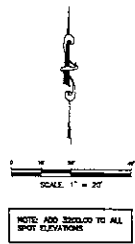


LEGEND

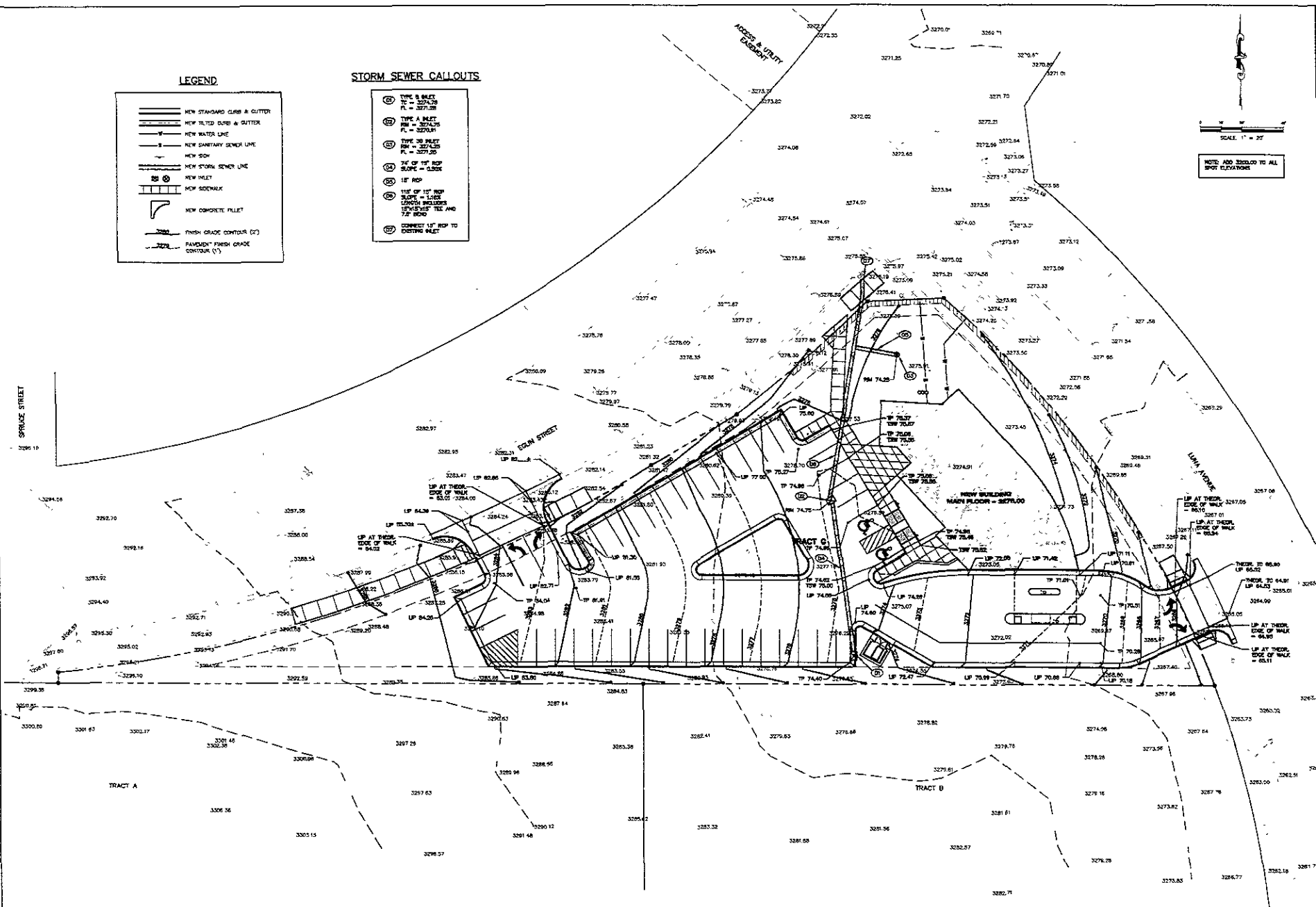


STORM SEWER CALLOUTS

- ① TYPE B INLET
TI = 3274.78
PI = 3273.88
- ② TYPE A INLET
RM = 3274.15
PI = 3273.91
- ③ TYPE 28 INLET
RM = 3273.55
PI = 3273.50
- ④ 7% OF 18" ROP
SLOPE = 0.56%
- ⑤ 18" ROP
- ⑥ 11" OF 18" ROP
SLOPE = 1.00%
LENGTH INCLUDES
UPSTREAM TIE AND
7.5' BOND
- ⑦ CONNECT 18" ROP TO
EXISTING INLET



NOTE: ADD 3.00' TO ALL SPOT ELEVATIONS



FMG, Inc.
 3700 Blurple Road
 Rapid City, SD 57702-0317
 (605) 342-4100 FAX (605) 342-4222

NOT FOR CONSTRUCTION

File Number	050016
Location	SEC 7A SECTION 30
Drawn By	TRC, SEC 30M
Surveyed By	DR/AM/JP
Date	FEBRUARY 2005
Designed By	JJK
Drawn By	KAT/ROC
Checked By	JJK

**CONQUEST DEVELOPMENT
 NEW BUILDING
 RAPID CITY, SD**

Revision / Date	
Sheet Name	
GRADING PLAN	
Sheet Number	
C3 of C5	