



Prepared By

Scale: 1/4" = 1'-0"

Designed By R.J.
Drawn By MP
Design Date
Print Date

Internal Job No. PRO9-1789
Surveyed By
Survey Date

Revisions

PARKVIEW TENNIS COURT
REST ROOM & LANDSCAPE

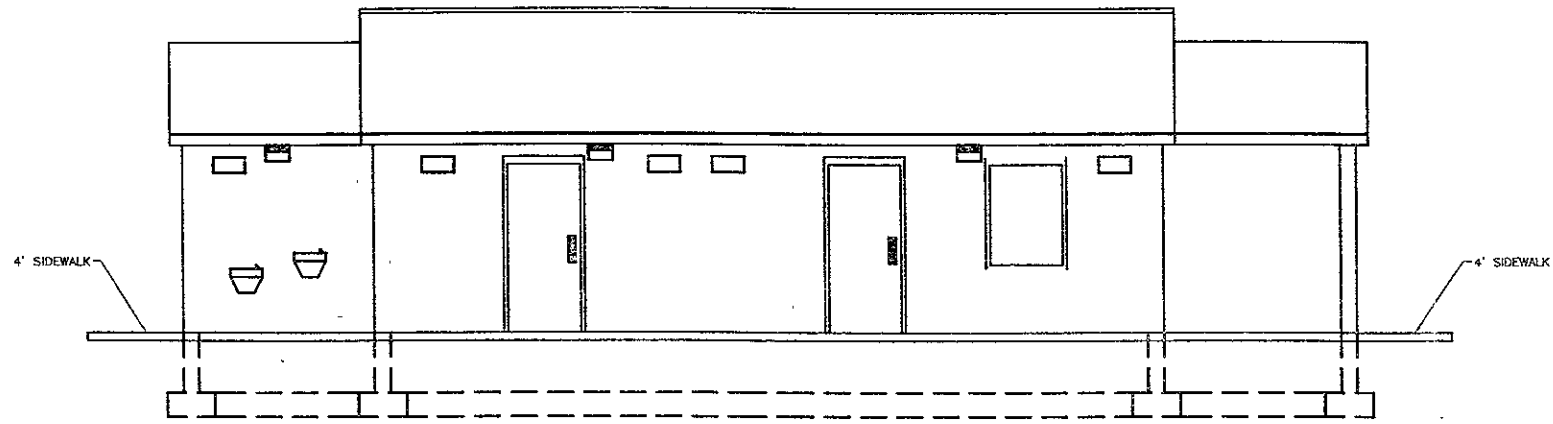
CITY OF RAPID CITY PROJECT NO. PRO9-1789

Sheet Title

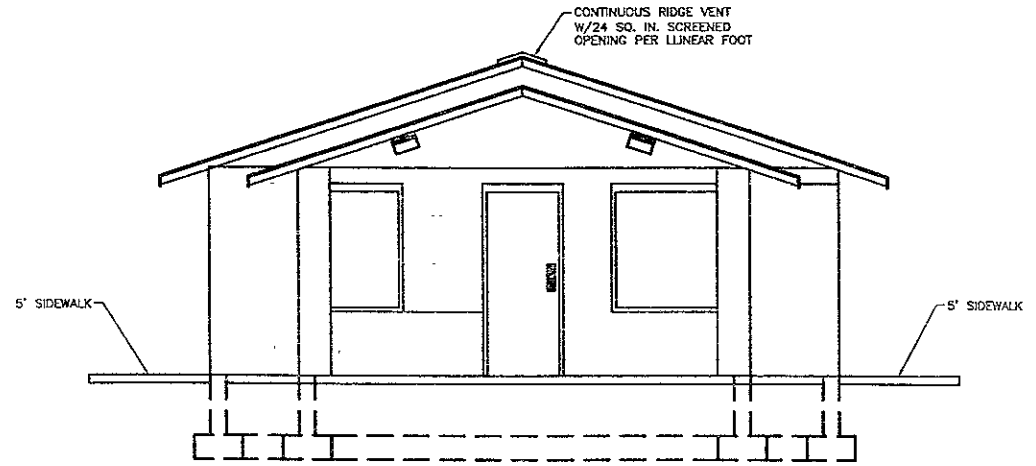
ELEVATIONS

Sheet

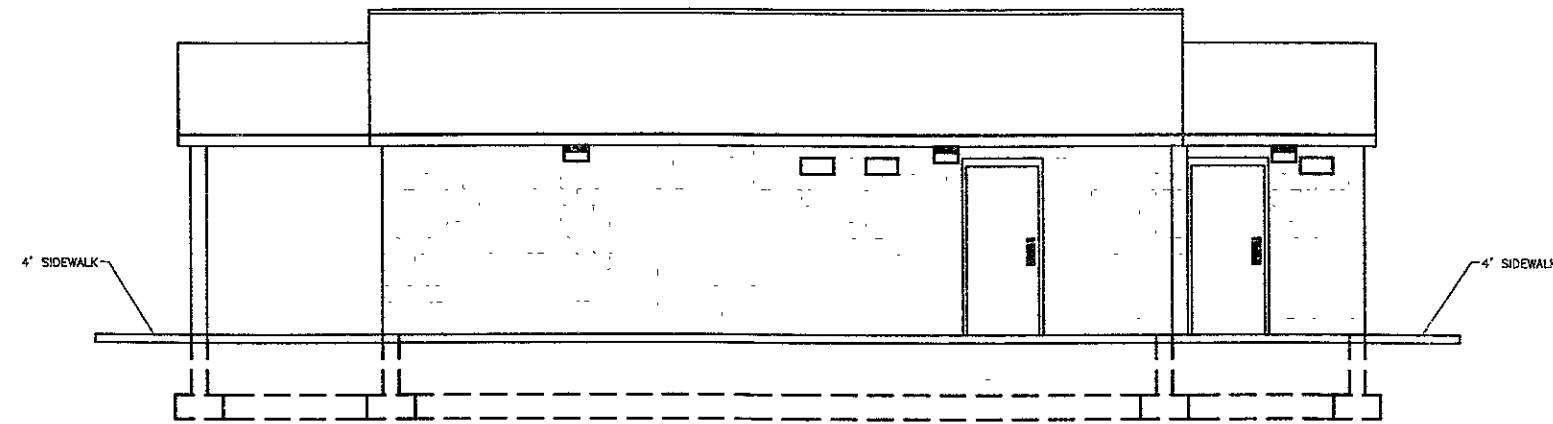
of



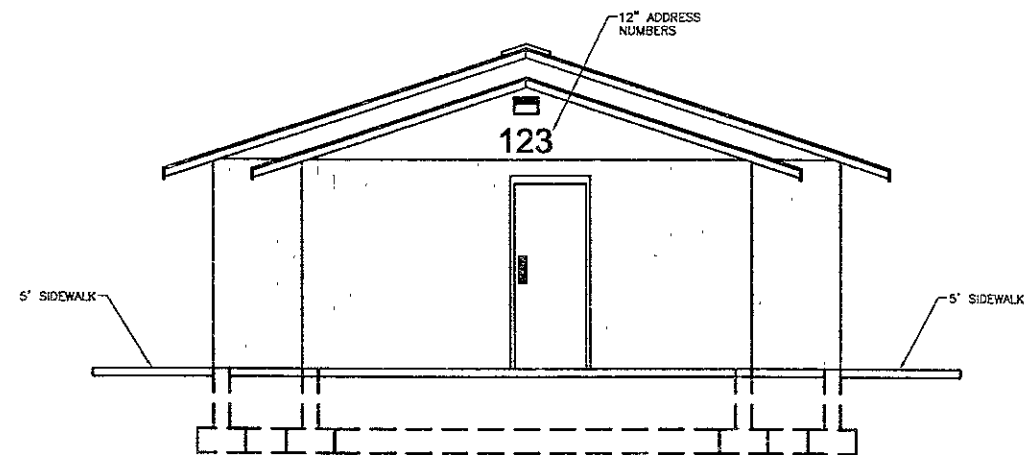
NORTH ELEVATION
SCALE: 1/4" = 1'-0"



WEST ELEVATION
SCALE: 1/4" = 1'-0"



SOUTH ELEVATION
SCALE: 1/4" = 1'-0"



EAST ELEVATION
SCALE: 1/4" = 1'-0"