

1. 900 MHZ OMNI ANTENNA
2. 4' 6G MICROWAVE ANTENNA WITH RADOME
3. 150 MHZ 3 ELEMENT YAGI ANTENNA
4. 12' WIRELESS PLATFORM
5. DISH MOUNT ASSEMBLY:  
TRI-BRACKET  
PIPE MOUNT
7. HANDHOLE RIM- 2X 5"x6"
8. HANDHOLE RIM- 9"x24"
9. CLIMBING PEGS
10. ANTI-FALL RAIL

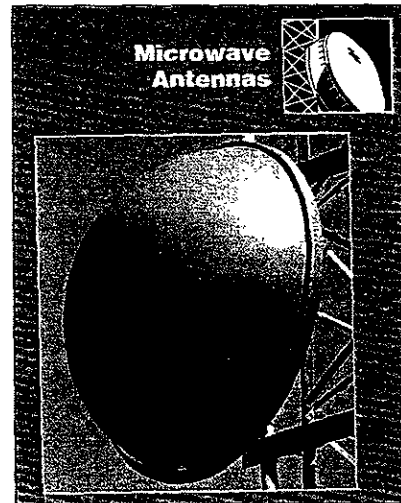
RECEIVED

FEB 27 2009

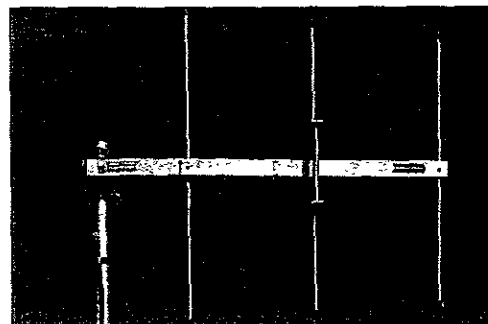
Rapid City Growth  
Management Department



OMNI ANTENNA



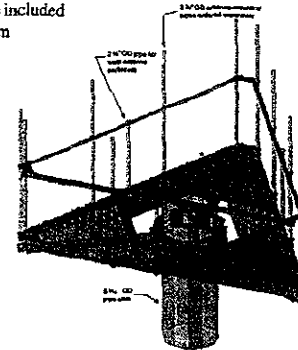
4' 6G MW ANTENNA



150 MHZ 3 ELEMENT  
TAGI ANTENNA

WIRELESS PLATFORM  
FOR POLYGON & ROUND POLE STRUCTURES

Three-Sided Wireless Platforms, for round and polygon poles with 12 or more sides, are designed to support up to five Panel Antennas on each Platform face. The Platform mounts to the pole using a separately ordered Tri-Bracket (page 10.1). Wireless Panel Antennas mount to the Platform on separately ordered 2 1/2" OD Antenna Mounting Pipes. U-bolts for twelve Antenna Mounting Pipes are included with every Platform



Platforms with Hatches and Handrail Kits

Product Number	Min. Dia	Max. Dia	Outside Antenna Separation	List Price
B2044	1'	2'	8'-7"	\$2,800.00
B1833	1'	2'-1/2"	12'	\$2,850.00
B1894	2'-1/2"	3'-8"	12'-10"	\$2,950.00
B1895	3'-8"	4'-6"	12'-10"	\$3,050.00

WEST RIVER ELECTRIC COOPERATIVE  
RUSHMORE ELECTRIC POWER COOPERATIVE

RAPID VALLEY TOWER

ELEVATION 95'

DRAWN/CHECK BY: AK/MB SHEET.

02/23/09 SCALE: 3/32" = 1' - 0" 1