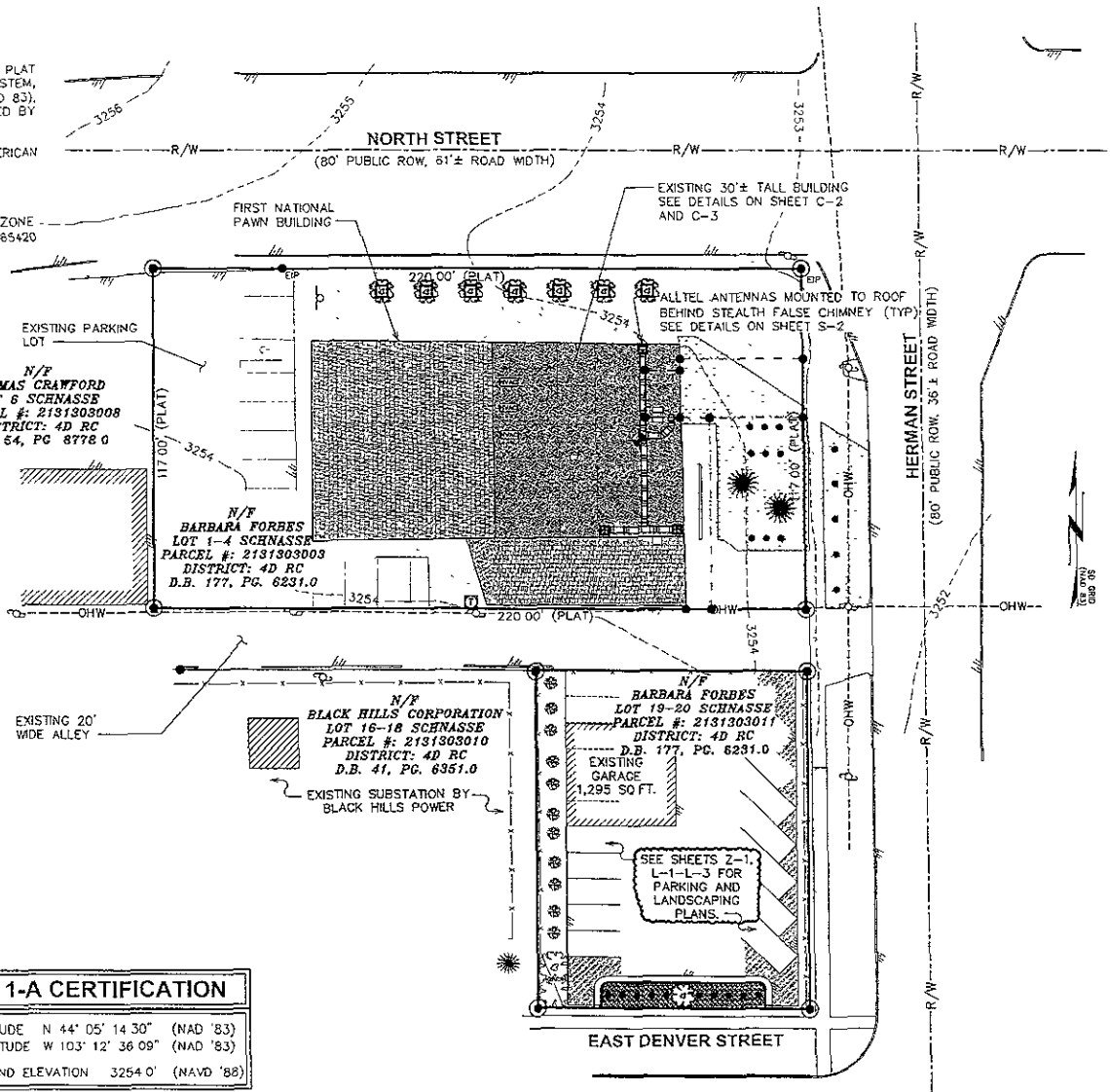



**NOTES:**

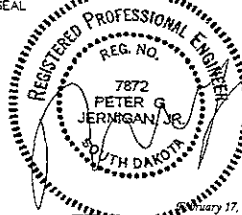
- 1 THE BASIS OF THE MERIDIANS AND COORDINATES FOR THIS PLAT IS THE SOUTH DAKOTA STATE PLANE COORDINATE SYSTEM, SOUTH ZONE, NORTH AMERICAN DATUM 1983 (SDSPCS NAD 83), BASED ON DIFFERENTIAL GPS OBSERVATIONS PERFORMED BY HUSKER SURVEYING LLC
- 2 VERTICAL INFORMATION SHOWN, BASED ON THE NORTH AMERICAN VERTICAL DATUM OF NAVD 1988 IN FEET
- 3 ALL DISTANCES ARE GROUND UNLESS OTHERWISE NOTED
- 4 THE EXISTING BUILDING IS NOT LOCATED IN A FLOOD ZONE "ZONE X", AS DETERMINED BY FEMA FLOOD RATE MAP NO 465420 0008 F, EFFECTIVE DATE FEBRUARY 16, 1996.



PLANS PREPARED FOR  
**alltel**  
 18300 East 71st Avenue, Suite 120  
 Denver, CO 80249  
 Office (605)-342-8572

PROJECT INFORMATION  
**SDRC  
 MAPLE AVENUE**  
 115 E. NORTH ST.  
 RAPID CITY, SD 57701  
 (PENNINGTON COUNTY)

PLANS PREPARED BY:  
  
**TOWER ENGINEERING PROFESSIONALS**  
 3703 JUNCTION BOULEVARD  
 RALEIGH, NC 27603-5263  
 OFFICE (919) 661-6351  
 FAX: (919) 661-6350

SEAL  
  
 REGISTERED PROFESSIONAL ENGINEER  
 REG. NO. 7872  
 PETER G. JERMAN, JR.  
 SOUTH DAKOTA  
 February 17, 2009

7	02-17-09	REVISED CONSTRUCTION
6	1-16-09	REVISED CONSTRUCTION
5	10-21-09	REVISED CONSTRUCTION
4	09-02-09	CONSTRUCTION
3	07-15-09	REVISED PRELIMINARY
REV	DATE	ISSUED FOR.

DRAWN BY NMC CHECKED BY GMA

SHEET TITLE  
**SITE PLAN**

SHEET NUMBER <b>C-1</b>	REVISION 7 TEP # 072106
----------------------------	-------------------------------

**LEGEND**

- EXIST PROPERTY LINE
- ⊙ EXIST UTILITY POLE
- ⊠ EXIST BILLBOARD
- ⊞ EXIST HVAC UNITS
- ⊟ EXIST TELCO PEDESTAL
- PROPERTY CORNER
- ⊕ EXISTING IRON PIN
- ⊙ 1-A CERTIFICATION LOCATION
- 200--- EXIST. CONTOUR LINE
- /—/— EDGE OF PAVEMENT
- OHW--- OVERHEAD WIRE
- R/W--- RIGHT-OF-WAY
- X— CHAIN LINK FENCE

**1-A CERTIFICATION**  
 LATITUDE N 44° 05' 14.30" (NAD '83)  
 LONGITUDE W 103° 12' 36.09" (NAD '83)  
 GROUND ELEVATION 3254.0' (NAVD '88)

**SITE PLAN**  
 SCALE 1" = 40'

0 40 80  
 SCALE IN FEET