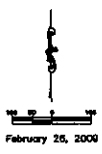


**PLAT OF LOT 1 OF BLOCK 6 OF EAST MALL BUSINESS CENTER SUBDIVISION
AND DEDICATED PUBLIC RIGHT OF WAY FOR DYESS AVENUE
FORMERLY A PART OF SE 1/4 NORTH OF I-90 LESS TRACT A OF NE 1/4 SE 1/4 AND
LESS LOTS H5, H6, H7, H8, & H9 BUT INCLUDING THAT PART OF
VACATED EAST MALL DRIVE BEING PART OF THE OUTSIDE EDGE OF LOT H5;
ALL LOCATED IN THE SECTION 29, T2N, R8E, BHM,
RAPID CITY, PENNINGTON COUNTY, SOUTH DAKOTA**

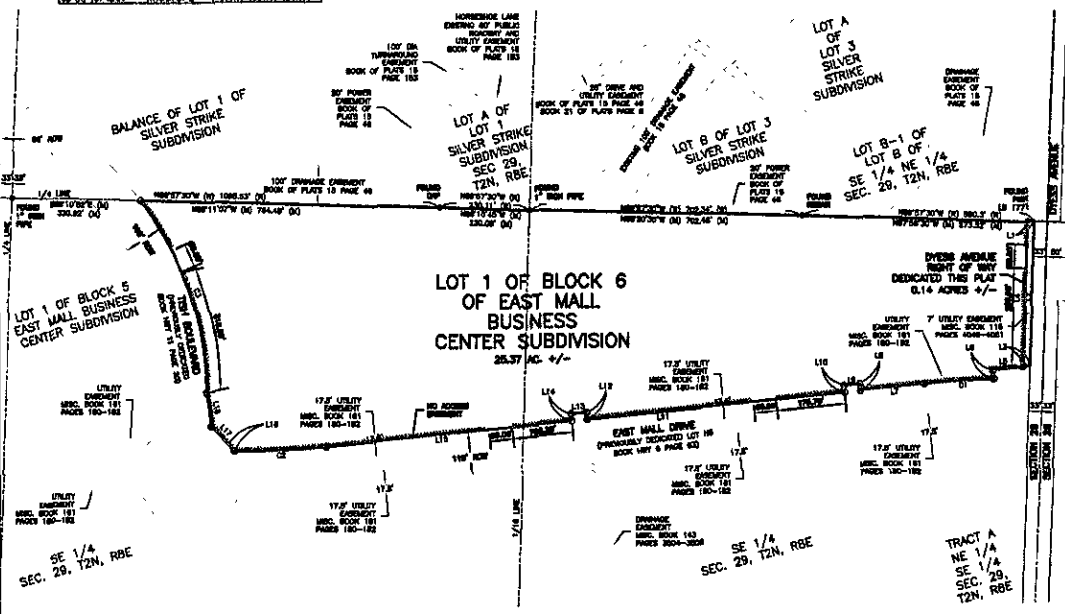
Lot	Area (Ac.)	Owner
1	0.14	FMLC, INC.
2	0.14	FMLC, INC.
3	0.14	FMLC, INC.
4	0.14	FMLC, INC.
5	0.14	FMLC, INC.
6	0.14	FMLC, INC.
7	0.14	FMLC, INC.
8	0.14	FMLC, INC.
9	0.14	FMLC, INC.
10	0.14	FMLC, INC.
11	0.14	FMLC, INC.
12	0.14	FMLC, INC.
13	0.14	FMLC, INC.
14	0.14	FMLC, INC.
15	0.14	FMLC, INC.
16	0.14	FMLC, INC.
17	0.14	FMLC, INC.
18	0.14	FMLC, INC.
19	0.14	FMLC, INC.
20	0.14	FMLC, INC.
21	0.14	FMLC, INC.
22	0.14	FMLC, INC.
23	0.14	FMLC, INC.
24	0.14	FMLC, INC.
25	0.14	FMLC, INC.
26	0.14	FMLC, INC.
27	0.14	FMLC, INC.
28	0.14	FMLC, INC.
29	0.14	FMLC, INC.
30	0.14	FMLC, INC.
31	0.14	FMLC, INC.
32	0.14	FMLC, INC.
33	0.14	FMLC, INC.
34	0.14	FMLC, INC.
35	0.14	FMLC, INC.
36	0.14	FMLC, INC.
37	0.14	FMLC, INC.
38	0.14	FMLC, INC.
39	0.14	FMLC, INC.
40	0.14	FMLC, INC.
41	0.14	FMLC, INC.
42	0.14	FMLC, INC.
43	0.14	FMLC, INC.
44	0.14	FMLC, INC.
45	0.14	FMLC, INC.
46	0.14	FMLC, INC.
47	0.14	FMLC, INC.
48	0.14	FMLC, INC.
49	0.14	FMLC, INC.
50	0.14	FMLC, INC.
51	0.14	FMLC, INC.
52	0.14	FMLC, INC.
53	0.14	FMLC, INC.
54	0.14	FMLC, INC.
55	0.14	FMLC, INC.
56	0.14	FMLC, INC.
57	0.14	FMLC, INC.
58	0.14	FMLC, INC.
59	0.14	FMLC, INC.
60	0.14	FMLC, INC.
61	0.14	FMLC, INC.
62	0.14	FMLC, INC.
63	0.14	FMLC, INC.
64	0.14	FMLC, INC.
65	0.14	FMLC, INC.
66	0.14	FMLC, INC.
67	0.14	FMLC, INC.
68	0.14	FMLC, INC.
69	0.14	FMLC, INC.
70	0.14	FMLC, INC.
71	0.14	FMLC, INC.
72	0.14	FMLC, INC.
73	0.14	FMLC, INC.
74	0.14	FMLC, INC.
75	0.14	FMLC, INC.
76	0.14	FMLC, INC.
77	0.14	FMLC, INC.
78	0.14	FMLC, INC.
79	0.14	FMLC, INC.
80	0.14	FMLC, INC.
81	0.14	FMLC, INC.
82	0.14	FMLC, INC.
83	0.14	FMLC, INC.
84	0.14	FMLC, INC.
85	0.14	FMLC, INC.
86	0.14	FMLC, INC.
87	0.14	FMLC, INC.
88	0.14	FMLC, INC.
89	0.14	FMLC, INC.
90	0.14	FMLC, INC.
91	0.14	FMLC, INC.
92	0.14	FMLC, INC.
93	0.14	FMLC, INC.
94	0.14	FMLC, INC.
95	0.14	FMLC, INC.
96	0.14	FMLC, INC.
97	0.14	FMLC, INC.
98	0.14	FMLC, INC.
99	0.14	FMLC, INC.
100	0.14	FMLC, INC.

1. 8' WIDE UTILITY AND DRAINAGE EASEMENT ON EACH SIDE OF ALL FRONT, SIDE, AND REAR LOT LINES OF ALL LOTS.
2. BASIS OF BEARING IS THE 1/4 SEC. LINE BETWEEN FOUND 1" IRON PIPE, ACCEPTED TO BE CENTER 1/4 COR. AND FOUND FORK 1771 CAP ACCEPTED TO BE ON 1/4 SEC. LINE AT WEST 50' ROW OF DYESS AVE. BEARING-S88°10'12"E. DISTANCE=2601.50

LEGEND
 00 RECORDED
 00 MEASURED THIS SURVEY
 O SET REBAR W/CAP STAMPED "FERBER L&P 4783" THIS SURVEY
 ● FOUND SURVEY MONUMENT



Lot	Area (Ac.)	Owner
1	0.14	FMLC, INC.
2	0.14	FMLC, INC.
3	0.14	FMLC, INC.
4	0.14	FMLC, INC.
5	0.14	FMLC, INC.
6	0.14	FMLC, INC.
7	0.14	FMLC, INC.
8	0.14	FMLC, INC.
9	0.14	FMLC, INC.
10	0.14	FMLC, INC.
11	0.14	FMLC, INC.
12	0.14	FMLC, INC.
13	0.14	FMLC, INC.
14	0.14	FMLC, INC.
15	0.14	FMLC, INC.
16	0.14	FMLC, INC.
17	0.14	FMLC, INC.
18	0.14	FMLC, INC.
19	0.14	FMLC, INC.
20	0.14	FMLC, INC.
21	0.14	FMLC, INC.
22	0.14	FMLC, INC.
23	0.14	FMLC, INC.
24	0.14	FMLC, INC.
25	0.14	FMLC, INC.
26	0.14	FMLC, INC.
27	0.14	FMLC, INC.
28	0.14	FMLC, INC.
29	0.14	FMLC, INC.
30	0.14	FMLC, INC.
31	0.14	FMLC, INC.
32	0.14	FMLC, INC.
33	0.14	FMLC, INC.
34	0.14	FMLC, INC.
35	0.14	FMLC, INC.
36	0.14	FMLC, INC.
37	0.14	FMLC, INC.
38	0.14	FMLC, INC.
39	0.14	FMLC, INC.
40	0.14	FMLC, INC.
41	0.14	FMLC, INC.
42	0.14	FMLC, INC.
43	0.14	FMLC, INC.
44	0.14	FMLC, INC.
45	0.14	FMLC, INC.
46	0.14	FMLC, INC.
47	0.14	FMLC, INC.
48	0.14	FMLC, INC.
49	0.14	FMLC, INC.
50	0.14	FMLC, INC.
51	0.14	FMLC, INC.
52	0.14	FMLC, INC.
53	0.14	FMLC, INC.
54	0.14	FMLC, INC.
55	0.14	FMLC, INC.
56	0.14	FMLC, INC.
57	0.14	FMLC, INC.
58	0.14	FMLC, INC.
59	0.14	FMLC, INC.
60	0.14	FMLC, INC.
61	0.14	FMLC, INC.
62	0.14	FMLC, INC.
63	0.14	FMLC, INC.
64	0.14	FMLC, INC.
65	0.14	FMLC, INC.
66	0.14	FMLC, INC.
67	0.14	FMLC, INC.
68	0.14	FMLC, INC.
69	0.14	FMLC, INC.
70	0.14	FMLC, INC.
71	0.14	FMLC, INC.
72	0.14	FMLC, INC.
73	0.14	FMLC, INC.
74	0.14	FMLC, INC.
75	0.14	FMLC, INC.
76	0.14	FMLC, INC.
77	0.14	FMLC, INC.
78	0.14	FMLC, INC.
79	0.14	FMLC, INC.
80	0.14	FMLC, INC.
81	0.14	FMLC, INC.
82	0.14	FMLC, INC.
83	0.14	FMLC, INC.
84	0.14	FMLC, INC.
85	0.14	FMLC, INC.
86	0.14	FMLC, INC.
87	0.14	FMLC, INC.
88	0.14	FMLC, INC.
89	0.14	FMLC, INC.
90	0.14	FMLC, INC.
91	0.14	FMLC, INC.
92	0.14	FMLC, INC.
93	0.14	FMLC, INC.
94	0.14	FMLC, INC.
95	0.14	FMLC, INC.
96	0.14	FMLC, INC.
97	0.14	FMLC, INC.
98	0.14	FMLC, INC.
99	0.14	FMLC, INC.
100	0.14	FMLC, INC.



CERTIFICATE OF STREET AUTHORITY
 THE LOCATION OF THE PROPOSED PROPERTY LINES ADJUTING THE COUNTY OR STATE HIGHWAY OR THE COUNTY ROAD AS SHOWN HEREON, IS HEREBY APPROVED. ANY CHANGE IN THE LOCATION OF THE PROPOSED ACCESS SHALL REQUIRE ADDITIONAL APPROVAL.
 DATED THIS _____ DAY OF _____, 2009.

HIGHWAY/STREET AUTHORITY

CERTIFICATE OF COUNTY TREASURER
 I, TREASURER OF PENNINGTON COUNTY, DO HEREBY CERTIFY THAT ALL TAXES WHICH ARE DUE UPON THE WITHIN DESCRIBED LANDS ARE FULLY PAID ACCORDING TO THE RECORDS OF MY OFFICE.
 DATED THIS _____ DAY OF _____, 2009.

TREASURER OF PENNINGTON COUNTY

CERTIFICATE OF REGISTER OF DEEDS
 STATE OF SOUTH DAKOTA
 COUNTY OF PENNINGTON
 FILED THIS _____ DAY OF _____, 2009, AT _____ M. L.T. IN BOOK _____ PAGE _____

REGISTER OF DEEDS
 BY _____ FEES \$ _____

CERTIFICATE OF GROWTH MANAGEMENT DIRECTOR
 I, GROWTH MANAGEMENT DIRECTOR OF THE CITY OF RAPID CITY, HAVE REVIEWED THIS PLAT AND HAVE FOUND IT TO CONFORM TO THE SUBDIVISION REQUIREMENTS OF CHAPTER 18-02.05 OF THE RAPID CITY MUNICIPAL CODE AND AS SUCH I HAVE APPROVED THIS PLAT AS FINAL PLAT.
 DATED THIS _____ DAY OF _____, 2009.

GROWTH MANAGEMENT DIRECTOR OF THE CITY OF RAPID CITY

CERTIFICATE OF FINANCE OFFICER
 I, FINANCE OFFICER OF THE CITY OF RAPID CITY, DO HEREBY CERTIFY THAT THE GROWTH MANAGEMENT DIRECTOR OF THE CITY OF RAPID CITY, HAS APPROVED THIS FINAL PLAN AS SHOWN.
 DATED THIS _____ DAY OF _____, 2009.

FINANCE OFFICER OF THE CITY OF RAPID CITY

CERTIFICATE OF SURVEYOR
 STATE OF SOUTH DAKOTA
 COUNTY OF PENNINGTON
 I, DAN P. FERBER, REGISTERED LAND SURVEYOR, NO. 4783 OF THE STATE OF SOUTH DAKOTA, DO HEREBY CERTIFY THAT AT THE REQUEST OF THE OWNERS LISTED HEREON, I HAVE SURVEYED THE TRACT OF LAND SHOWN, AND TO THE BEST OF MY KNOWLEDGE AND BELIEF, THE WITHIN PLAT IS A REPRESENTATION OF SAID SURVEY EASEMENTS OR RESTRICTIONS OF MISCELLANEOUS RECORD OR PRIVATE AGREEMENTS THAT ARE NOT KNOWN TO ME ARE NOT SHOWN HEREON.

DAN P. FERBER REGISTERED LAND SURVEYOR 4783

CERTIFICATE OF FINANCE OFFICER
 I, FINANCE OFFICER OF THE CITY OF RAPID CITY, DO HEREBY CERTIFY THAT ALL SPECIAL ASSESSMENTS WHICH ARE DUE UPON THE WITHIN DESCRIBED LANDS ARE FULLY PAID ACCORDING TO THE RECORDS OF MY OFFICE.
 DATED THIS _____ DAY OF _____, 2009.

FINANCE OFFICER OF THE CITY OF RAPID CITY

CERTIFICATE OF DIRECTOR OF EQUALIZATION
 I, DIRECTOR OF EQUALIZATION, PENNINGTON COUNTY, DO HEREBY CERTIFY THAT I HAVE ON RECORD IN MY OFFICE A COPY OF THE WITHIN DESCRIBED PLAT.
 DATED THIS _____ DAY OF _____, 2009

DIRECTOR OF EQUALIZATION OF PENNINGTON COUNTY
 APPROVED: _____ DATE _____

OWNER: FMLC, INC.
 3213 WEST MAIN #444
 RAPID CITY, SD 57702
 PHONE: 605-343-5328

PREPARED BY: FERBER ENGINEERING COMPANY INC.
 729 EAST WATERTOWN STREET
 RAPID CITY, SD 57701
 PHONE: 605-343-3311