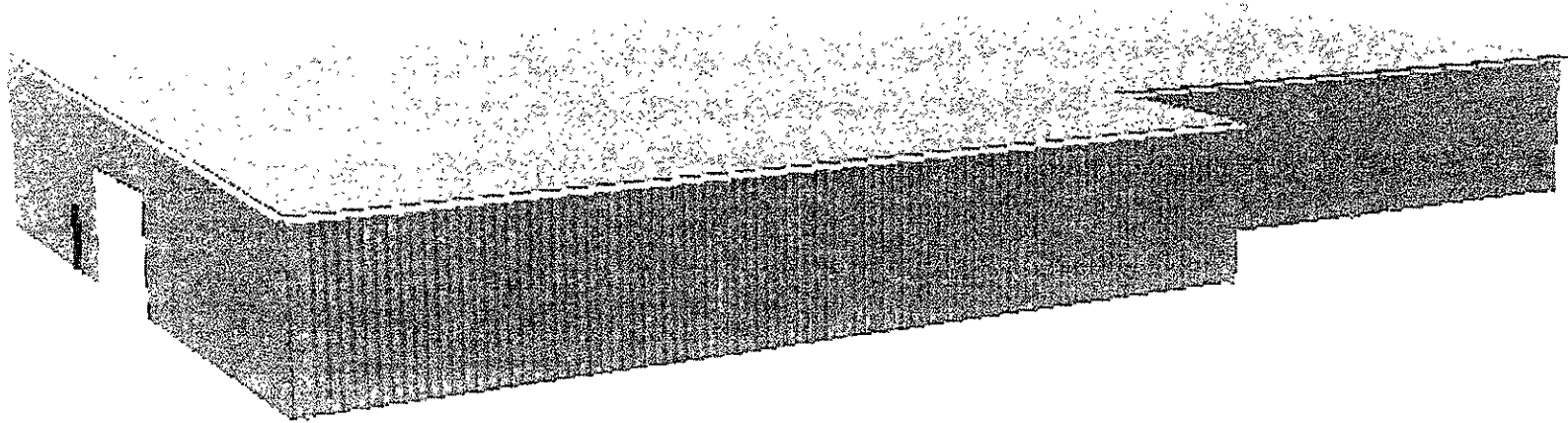



Unit 2 - Frames 01-03

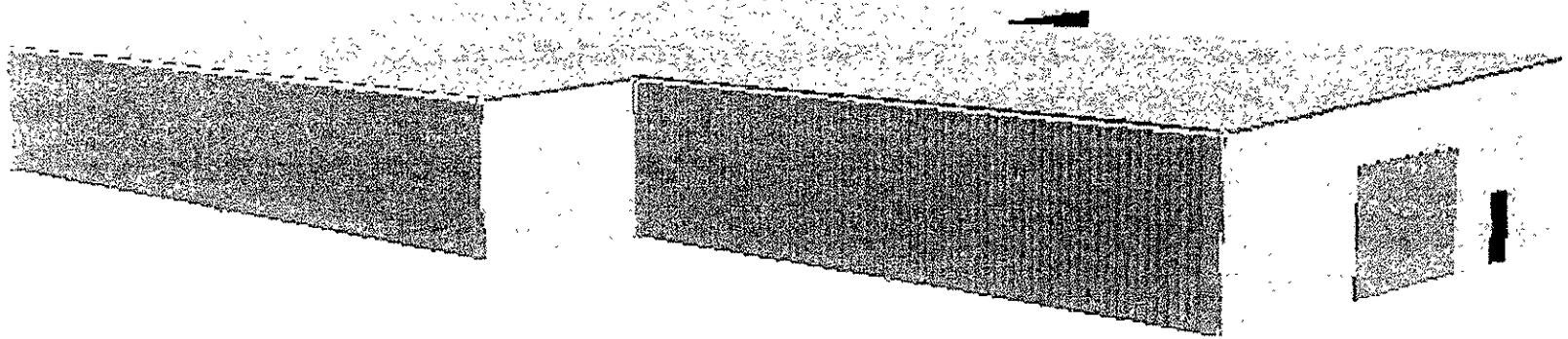



1. Please locate and dimension:
  - a. Required clear height dimensions and locations.
  - b. Special curb heights, pocket depths and column locations.
2. Frame clearance dimensions are within +/- 4". Critical clearance requirements must be specified on your building order.
3. Girts and purlins, as shown, are for typical spacing.

	<b>Builder:</b> Gustafson Builders PO Box 1376 4101 Deadwood Ave North Rapid City, SD, U.S.A. 57702	<b>Project:</b> Runnings Farm and Fleet	<b>Building Description:</b> Unit 2 of 2 Small Cold Storage 60' 0" x 70' 8" x 16' 10" IBC 03 / 30RSL / 20LL 4CLL / 100MPH	<b>Drawing Title:</b> Elevation	Runnings Farm and Fleet, a. Ver-7.30.002 1/14/2009 8:47 AM
			<b>Scale:</b> 1/7" = 1'-0"	<b>Drawing No.:</b>	<b>Rev:</b>




 <p>Butler Mfg Co. - Kansas City, MO</p>	<b>Builder:</b> Gustafson Builders PO Box 1376 4101 Deadwood Ave North Rapid City, SD, U S A 57702	<b>Project:</b> Runnings Farm and Fleet	<b>Building Description:</b> Large Cold Storage Small Cold Storage	<b>Drawing Title:</b> 3D View	Runnings Farm and Fleet.adv Ver-7.30.002 1/14/2009 8:11 AM	
				Scale n / a	Drawing No	Rev



 <p>Butler Mfg Co. - Kansas City, MO</p>	<b>Builder</b> Gustafson Builders PO Box 1376 4101 Deadwood Ave North Rapid City, SD, U S A 57702	<b>Project:</b> Runnings Farm and Fleet	<b>Building Description</b> Large Cold Storage Small Cold Storage	<b>Drawing Title:</b> Runnings Farm and Fleet adv Ver-7.30.002 1/14/2009 8:19 AM	
				3D View  Scale n / a	Drawing No  Rev:



 <p>Butler Mfg Co - Kansas City, MO</p>	<b>Builder</b> Gustafson Builders PO Box 1376 4101 Deadwood Ave North Rapid City, SD, U S A 57702	<b>Project</b> Runnings Farm and Fleet	<b>Building Description</b> Large Cold Storage Small Cold Storage	<b>Drawing Title</b> Runnings Farm and Fleet.adv Ver-7.30.002 1/14/2009 8:24 AM	
				<b>3D View</b>	<b>Scale</b> n/a