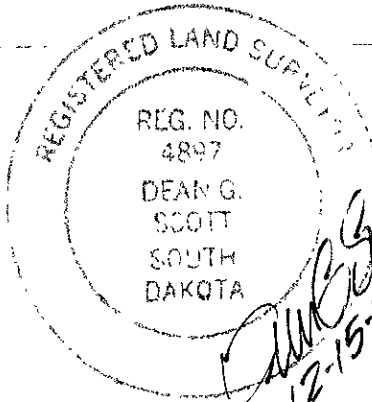
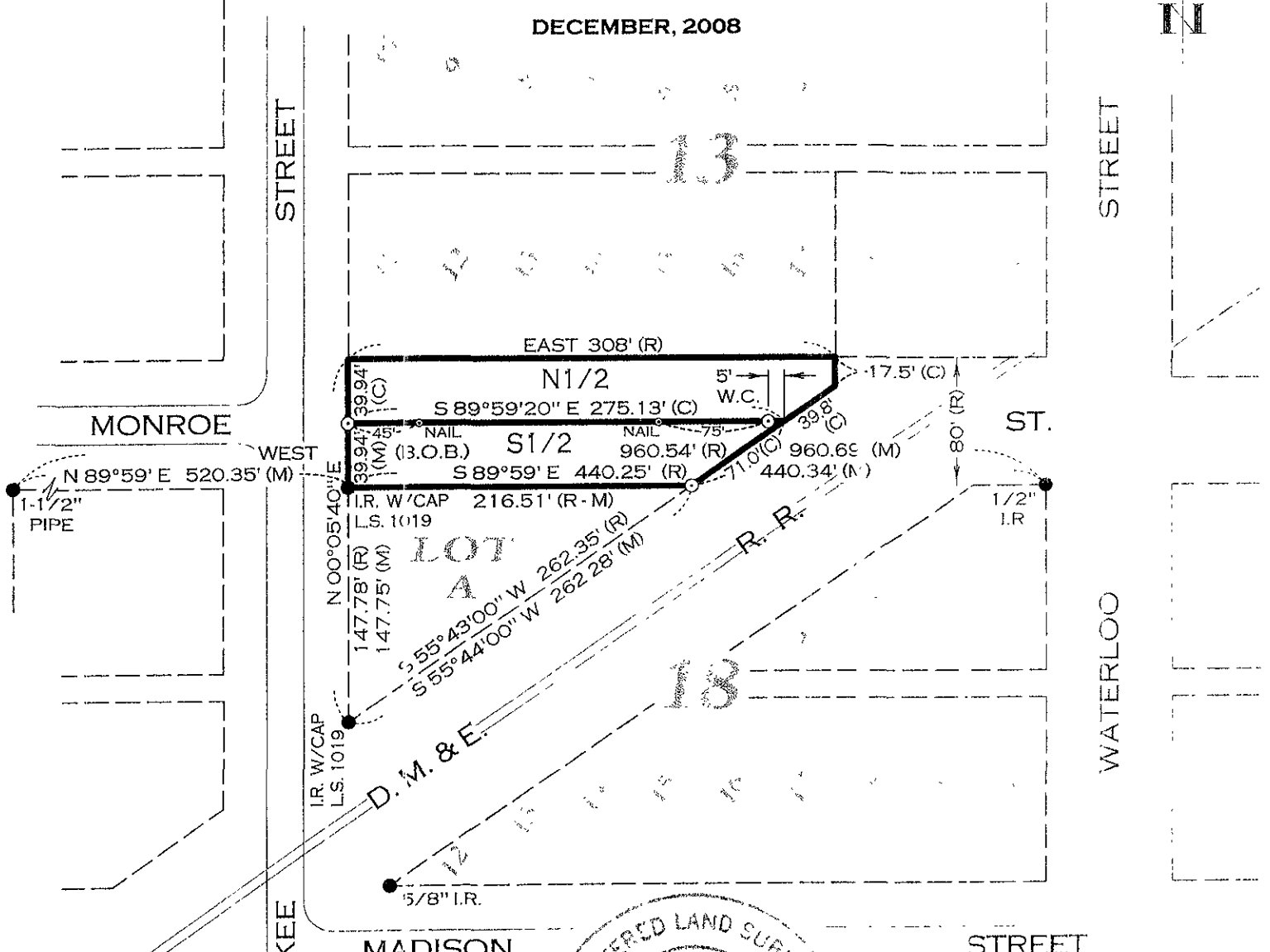


EXHIBIT A

VACATED MONROE STREET RIGHT-OF-WAY
FROM THE EAST RIGHT-OF-WAY LINE OF MILWAUKEE STREET
TO THE WEST RIGHT-OF-WAY LINE OF THE D. M. & E. RAILROAD,
LOCATED BETWEEN AND ADJACENT TO:
LOTS 11 THROUGH 17 OF BLOCK 13, AND LOT A OF BLOCK 18 OF
WISE'S ADDITION TO RAPID CITY
IN THE S1/2 NW1/4 OF SECTION 31, T2N, R8E B.H.M.
RAPID CITY, PENNINGTON COUNTY, SOUTH DAKOTA.

DECEMBER, 2008



PREPARED BY
D.C. Scott
 SURVEYORS, INC
 3153 ANDERSON ROAD
 RAPID CITY, SD 57703
 (605) 393-2400

