

DEC 28 2001

Rapid City
Planning Department



LANDSCAPE REQUIREMENTS

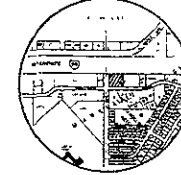
Lot Area 57,673 sf
Building Area 3,922 sf

Required Points 53,681

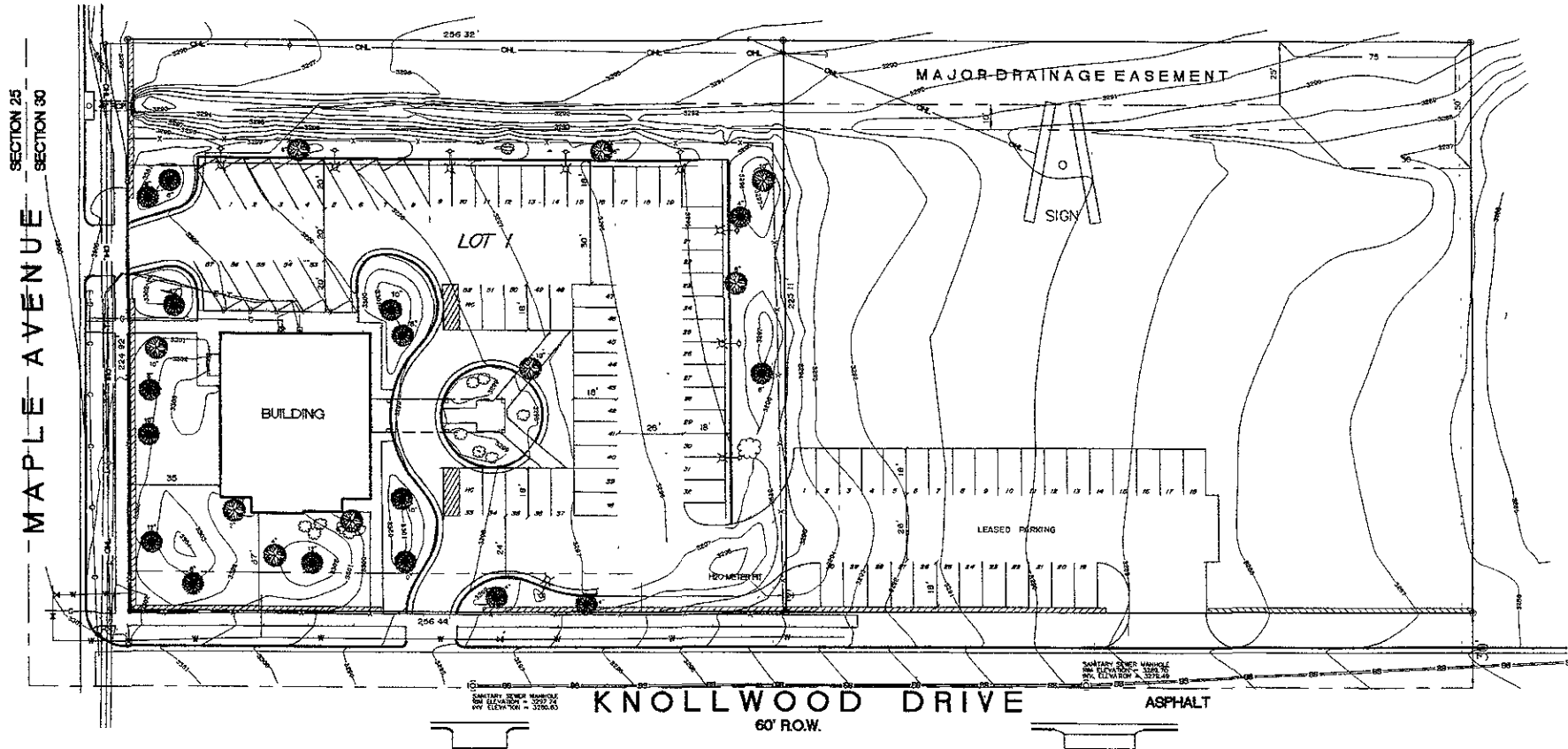
Existing Landscaping:

Grass - 3,278 sq	32,780
Trees - Large - 10 @ 2,000/ea	20,000
Trees - Medium - 6 @ 1,000/ea	6,000
Trees - Small - 10 @ 500/ea	5,000
Shrubs - 33 @ 250/ea	8,250
Total Existing Points:	67,030

VICINITY MAP
(NO SCALE)



INTERSTATE 90 R.O.W.



SECTION 25
SECTION 30
MAPLE AVENUE

SANITARY SEWER MAINLINE
BY ELEVATION = 3702.74
BY ELEVATION = 3700.63

KNOLLWOOD DRIVE

ASPHALT

60' R.O.W.

REVISIONS
 SUBMITTED BY: BHP
 DRAWN BY: BHM
 DATE: 12/29/01
 CHECKED BY: BHM
 PROJECT NO: 01-206-03
 1030 MAIN STREET, P.O. BOX 8154
 RAPID CITY, SOUTH DAKOTA 57109
 (605) 348-1538 FAX (605) 341-1112

FISK LAND SURVEYING
 AND CONSULTING ENGINE INC.

BOUNDARY SURVEY AND TOPOGRAPHIC MAP - LAYOUT
 OF LOTS 1 AND 2 OF LOT K2-C OF MARSHALL HEIGHTS TRACT
 W 1/4 OF SECTION 30, T2N, R8E, BHM, RAPID CITY,
 SIOUX COUNTY, SOUTH DAKOTA