

**STORM SEWER NOTES:**

STA 122+00.0 - 35.7' LT  
 STA 122+00.0 - 35.7' LT TO  
 STA 122+00.0 - 2.2' LT

INSTALL 2'x3' TYPE B INLET  
 INSTALL 34 LF - 18" RC PIPE  
 CONNECT TO EXISTING 18" RC PIPE

**REMOVAL NOTES:**

STA 119+07.1 - 53.5' LT TO  
 STA 139+05.4 - 93.0' LT  
 STA 120+59.9 - 40.6' RT  
 STA 121+56.4 - 40.7' RT

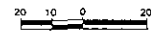
REMOVE BARBED WIRE FENCE - 2016 LF  
 REMOVE DO NOT PASS SIGN AND SALVAGE  
 TO CGRC TRAFFIC SHOP  
 REMOVE CENTER TURN LANE SIGN AND  
 SALVAGE TO CGRC TRAFFIC SHOP

**REMOVAL NOTES:**

STA 120+58.5 - 4.7' LT TO  
 STA 123+02.3 - 4.7' LT  
 STA 121+89.6 - 3.7' LT  
 STA 122+02.3 - 10.1' RT TO  
 STA 123+02.3 - 4.7' LT

REMOVE CONCRETE CURB  
 AND GUTTER - 214 LF  
 REMOVE TYPE B INLET  
 REMOVE CONCRETE PAVEMENT - 78 SF

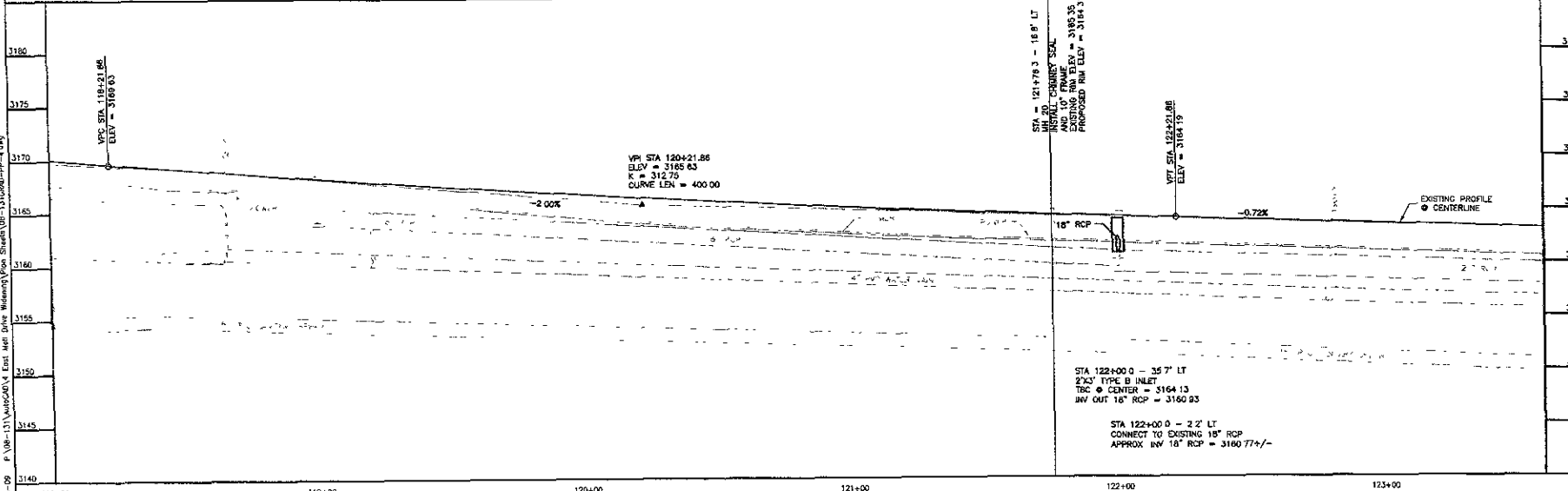
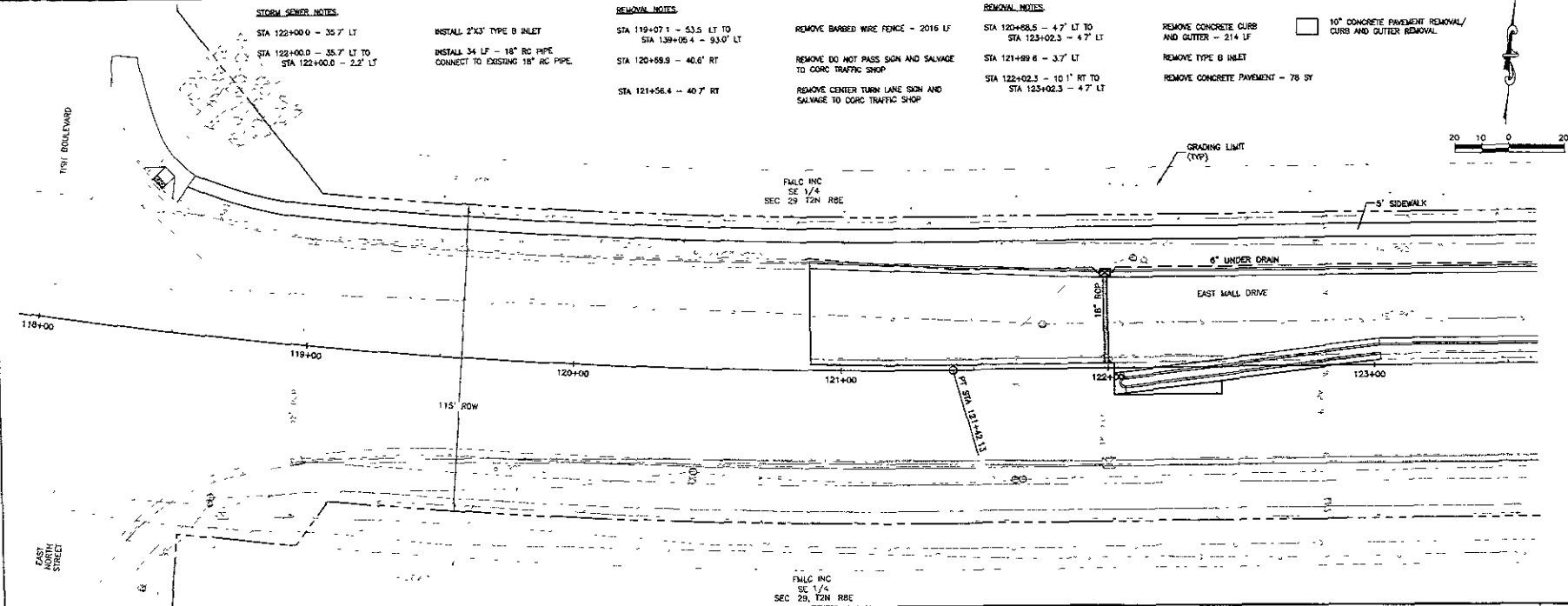
10" CONCRETE PAVEMENT REMOVAL/  
 CURB AND GUTTER REMOVAL



Project by  
**Ferber Engineering, Inc.**  
 228 Main Street, Suite 100, Westfield, MA 01095  
 Phone: (413) 253-1111

NOT FOR CONSTRUCTION

Date	AS SHOWN
Designed By	DRS
Drawn By	DRS
Check Date	OCT 2008
Print Date	02-6-09
Project No.	08-111
Surveyed By	SEA
Survey Date	AUG 2008



**EAST MALL DRIVE WIDENING**  
 TISH BOULEVARD TO DYESS AVENUE

Sheet Title  
 STREET AND STORM  
 SEWER PLAN & PROFILE  
 STA 118+00 - 123+00

**STORM SEWER NOTES:**

- STA 125+00.0 - 35.7' LT
- INSTALL 2'X3' TYPE B INLET
- STA 125+00.0 - 35.7' LT TO STA 125+00.0 - 8.3' LT
- INSTALL 28 LF - 18" RC PIPE
- STA 125+00.0 - 8.3' LT
- INSTALL 18"X18" RC TEE
- STA 125+00.0 - 8.3' LT TO STA 125+00.0 - 3.7' LT
- INSTALL 6 LF - 18" RC PIPE CONNECT TO EXISTING INLET
- STA 125+00.0 - 8.3' LT TO STA 125+36.4 - 8.3' LT
- INSTALL 38 LF - 18" RC PIPE

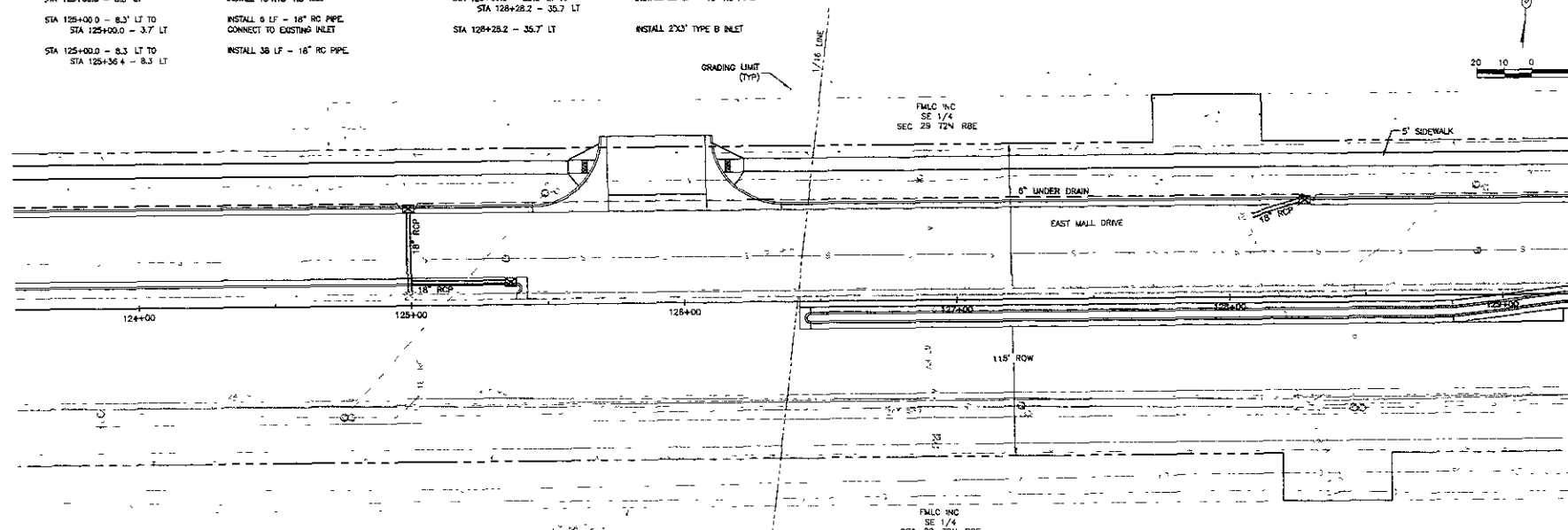
**STORM SEWER NOTES:**

- STA 125+36.4 - 8.3' LT
- INSTALL 2'X3' TYPE B INLET
- STA 125+08.5 - 28.5' LT
- INSTALL 18" 90° BEND AND CONNECT TO EXISTING 60" RCP
- STA 125+06.5 - 28.5' LT TO STA 125+28.2 - 35.7' LT
- INSTALL 22 LF - 18" RC PIPE
- STA 125+28.2 - 35.7' LT
- INSTALL 2'X3' TYPE B INLET

**REGIONAL NOTES:**

- STA 125+38.4 - 4.7' LT TO STA 128+82.3 - 4.7' LT
- REMOVE CONCRETE CURB AND GUTTER - 444 LF
- STA 125+42.4 - 2.0' LT TO STA 128+82.3 - 4.0' RT
- REMOVE CONCRETE PAVEMENT - 376 SF

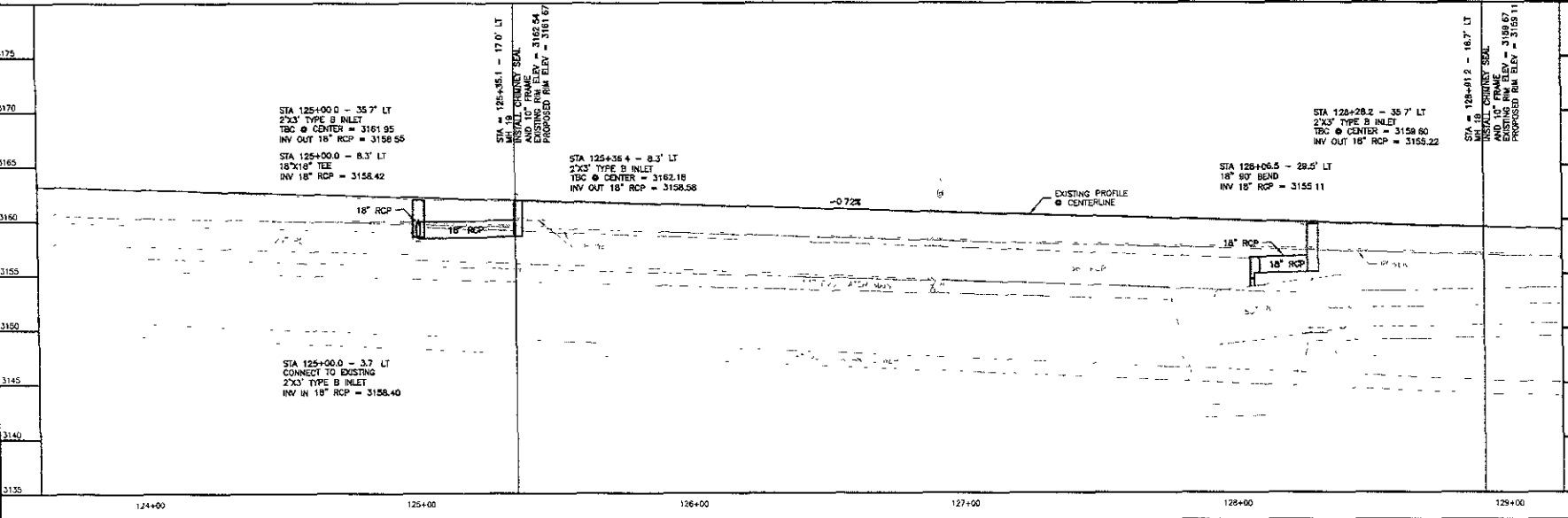
10" CONCRETE PAVEMENT REMOVAL/  
CURB AND GUTTER REMOVAL



NOT FOR CONSTRUCTION

Scale	AS SHOWN
Checked By	Drawn By
DATE	DATE
Design Date	Plot Date
OCT 2008	08-08-09
Job No	Sheet No
208-131	11 of 29
Checked By	Scale
DATE	DATE
08/08/09	AS SHOWN

02-6-09 P:\08-131\AutoCAD\4 East Mall Drive Widening\Plot\_Sheets\09-13\0901-09-4.dwg



3175	3175
3170	3170
3165	3165
3160	3160
3155	3155
3150	3150
3145	3145
3140	3140
3135	3135
124+00	129+00

EAST MALL DRIVE WIDENING  
TISH BOULEVARD TO DVESS AVENUE

# 09SR012

## STORM SEWER NOTES

STA 130+84.1 - 35.7' LT  
 INSTALL 2'x3' TYPE B INLET  
 INSTALL 28 LF - 18" RC PIPE  
 STA 130+84.1 - 35.7' LT TO  
 STA 130+84.1 - 8.3' LT  
 STA 130+84.1 - 8.3' LT  
 INSTALL 2'x3' TYPE B INLET

## STORM SEWER NOTES

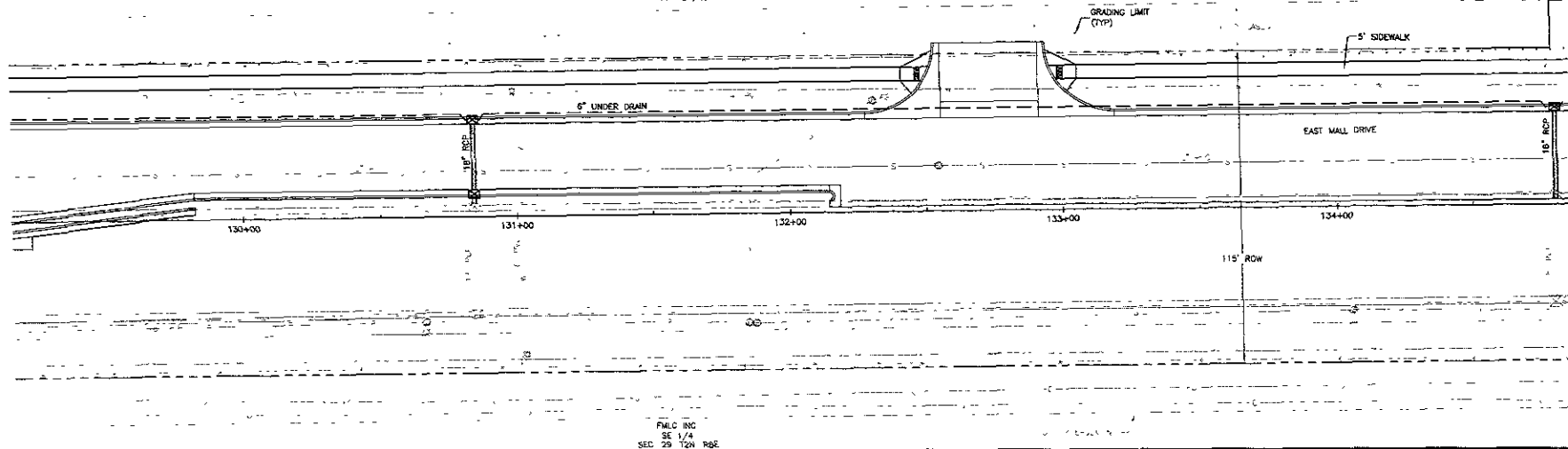
STA 130+84.1 - 8.3' LT TO  
 STA 130+84.1 - 3.7' LT  
 INSTALL 6 LF - 18" RC PIPE  
 CONNECT TO EXISTING INLET  
 STA 134+80.0 - 35.7' LT  
 INSTALL 2'x3' TYPE B INLET  
 STA 134+80.0 - 35.7' LT TO  
 STA 134+80.0 - 2.2' LT  
 INSTALL 34 LF - 18" RC PIPE  
 CONNECT TO EXISTING 18" RC PIPE

## REMOVAL NOTES

STA 132+14.4 - 1.8' LT TO  
 STA 139+48.6 - 83.3' LT  
 REMOVE CONCRETE CURB AND GUTTER - 784 LF

10" CONCRETE PAVEMENT REMOVAL/  
 CURB AND GUTTER REMOVAL

F.M.L.C. INC.  
 SE 1/4  
 SEC. 29 T2N, R8E

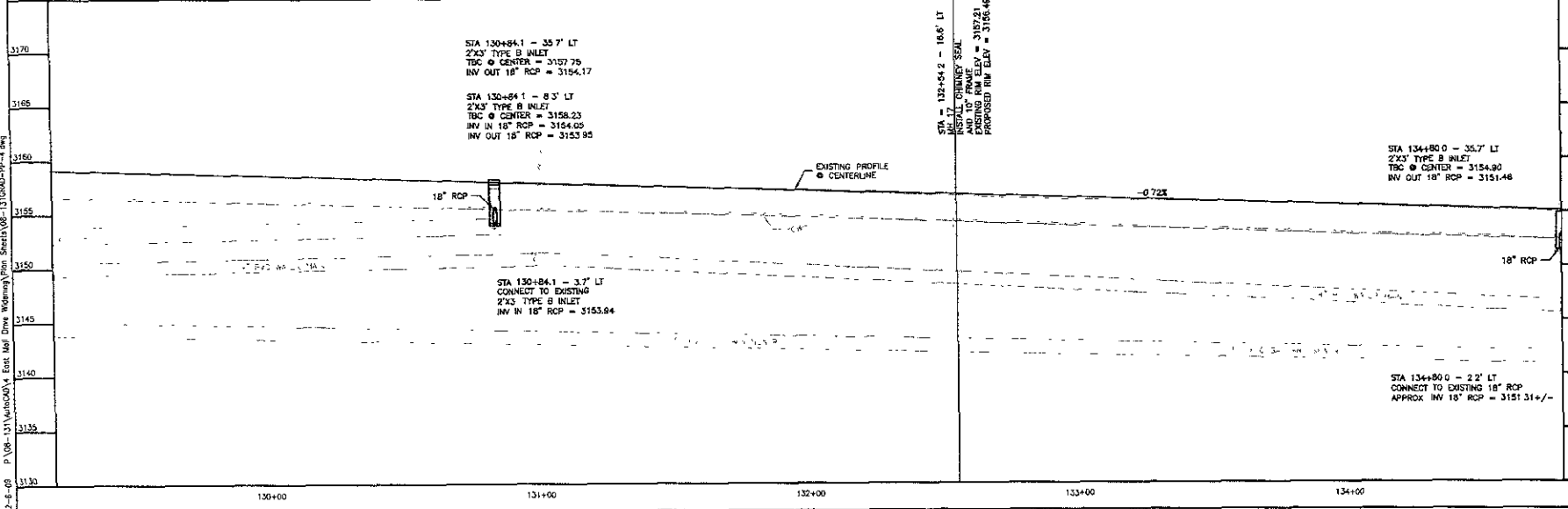


**Ferber Engineering, Inc.**  
 F.E.C.  
 211 East Washington St., Rapid City, SD 57701 - Phone: (605) 373-1111

NOT FOR CONSTRUCTION

Scale:	AS SHOWN
Designed By:	DRS
Drawn By:	DRS
Design Date:	OCT 2006
Print Date:	02-6-09
Project No.:	08-113
Surveyed By:	SEA
Survey Date:	8-30-2006

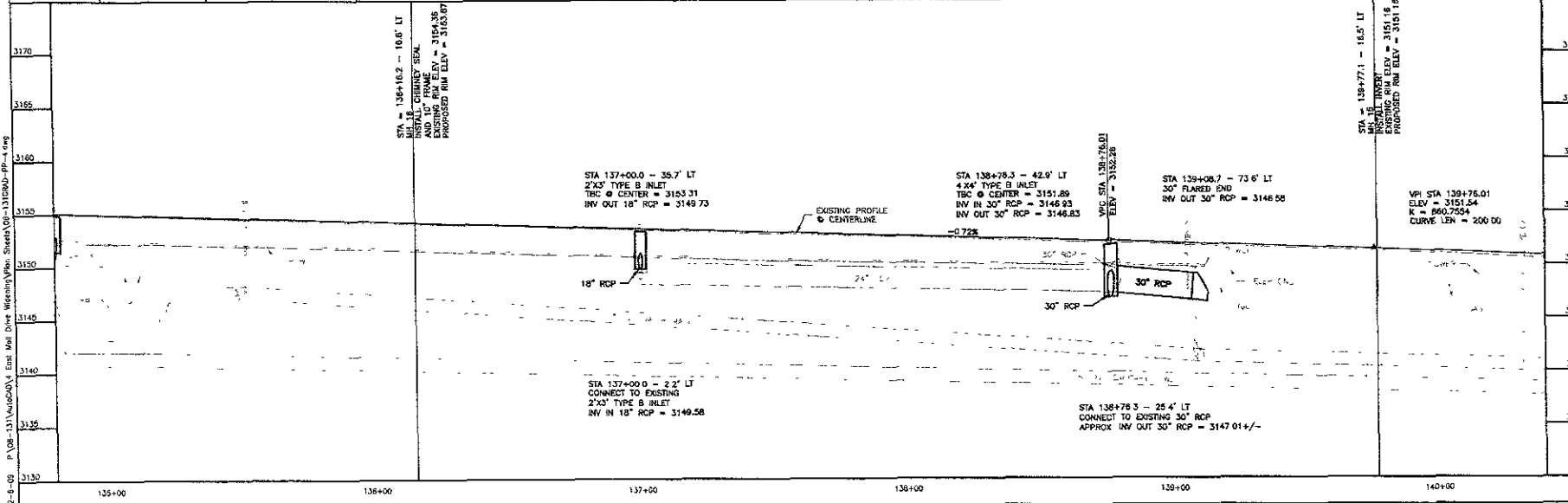
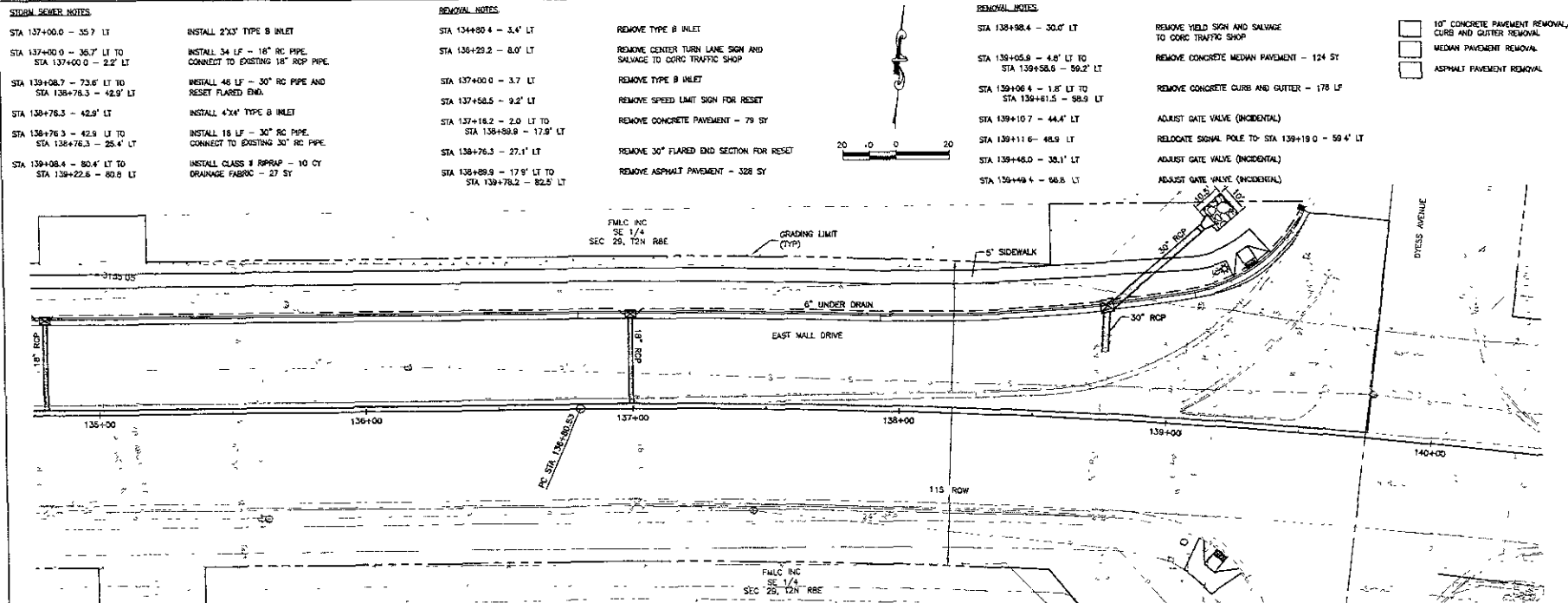
02-6-09 P:\08-113\AutoCAD\4 - East Mall Drive Widening\08-113\ESD-pp-4.dwg



**EAST MALL DRIVE WIDENING**  
 TISH BOULEVARD TO DYESS AVENUE

Street Title:  
 STREET AND STORM  
 SEWER PLAN & PROFILE

Sheet No.:  
 12 of 29



**STORM SEWER NOTES**

STA 137+00.0 - 35.7' LT  
 STA 137+00.0 - 35.7' LT TO  
 STA 137+00.0 - 2.2' LT

STA 139+08.7 - 73.6' LT TO  
 STA 138+76.3 - 42.9' LT

STA 138+76.3 - 42.9' LT

STA 138+76.3 - 42.9' LT TO  
 STA 138+76.3 - 25.4' LT

STA 139+08.4 - 80.4' LT TO  
 STA 139+22.6 - 80.9' LT

**INSTALL 2'x3' TYPE B INLET**

INSTALL 34 LF - 18" RC PIPE  
 CONNECT TO EXISTING 18" RCP PIPE.

INSTALL 46 LF - 30" RC PIPE AND  
 RESET FLARED END.

INSTALL 4'x4' TYPE B INLET

INSTALL 18 LF - 30" RC PIPE  
 CONNECT TO EXISTING 30" RC PIPE.

INSTALL CLASS 1 RPPRP - 10 CY  
 DRAINAGE FABRIC - 27 SY

**REMOVAL NOTES**

STA 134+80.4 - 3.4' LT  
 STA 136+29.2 - 8.0' LT

STA 137+00.0 - 3.7' LT  
 STA 137+58.5 - 9.2' LT

STA 137+18.2 - 2.0' LT TO  
 STA 138+58.9 - 17.9' LT

STA 138+76.3 - 27.1' LT

STA 138+89.9 - 17.9' LT TO  
 STA 139+78.2 - 82.4' LT

**REMOVE TYPE B INLET**

REMOVE CENTER TURN LANE SIGN AND  
 SALVAGE TO CORC TRAFFIC SHOP

REMOVE TYPE B INLET

REMOVE SPEED LIMIT SIGN FOR RESET

REMOVE CONCRETE PAVEMENT - 79 SY

REMOVE 30" FLARED END SECTION FOR RESET

REMOVE ASPHALT PAVEMENT - 328 SY

**REMOVAL NOTES**

STA 138+98.4 - 30.0' LT

STA 139+05.9 - 4.8' LT TO  
 STA 139+58.0 - 59.2' LT

STA 139+06.4 - 1.8' LT TO  
 STA 139+81.5 - 98.9' LT

STA 139+10.7 - 44.4' LT

STA 139+11.6 - 48.9' LT

STA 139+48.0 - 38.1' LT

STA 139+48.4 - 98.8' LT

REMOVE YIELD SIGN AND SALVAGE  
 TO CORC TRAFFIC SHOP

REMOVE CONCRETE MEDIAN PAVEMENT - 124 SY

REMOVE CONCRETE CURB AND GUTTER - 178 LF

ADJUST GATE VALVE (INCIDENTAL)

RELOCATE SIGNAL POLE TO STA 139+19.0 - 59.4' LT

ADJUST GATE VALVE (INCIDENTAL)

ADJUST GATE VALVE (INCIDENTAL)

- 10' CONCRETE PAVEMENT REMOVAL
- CURB AND GUTTER REMOVAL
- MEDIAN PAVEMENT REMOVAL
- ASPHALT PAVEMENT REMOVAL



Prepared By  
**Ferber Engineering, Inc.**  
 271 East Washington St., Field City, OH 44024  
 216.431.2411

NOT FOR CONSTRUCTION

Scale	AS SHOWN
Designed By	Drawn By
Checked	DRG
Design Date	Plot Date
OCT 2008	02-6-09
Working Job No.	
J08-131	
Reviewed By	Survey Date
SEA	AUG 2008
Permitted	

3170  
 3165  
 3160  
 3155  
 3150  
 3145  
 3140  
 3135  
 3130

135+00  
 136+00  
 137+00  
 138+00  
 139+00  
 140+00

STATIONING

3170  
 3165  
 3160  
 3155  
 3150  
 3145  
 3140  
 3135  
 3130

135+00  
 136+00  
 137+00  
 138+00  
 139+00  
 140+00

STATIONING

Sheet No.  
 STREET AND STORM  
 SEWER PLAN & PROFILE  
 STA 134+80 - 140+40

Date  
 13 of 29