

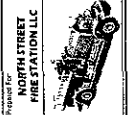
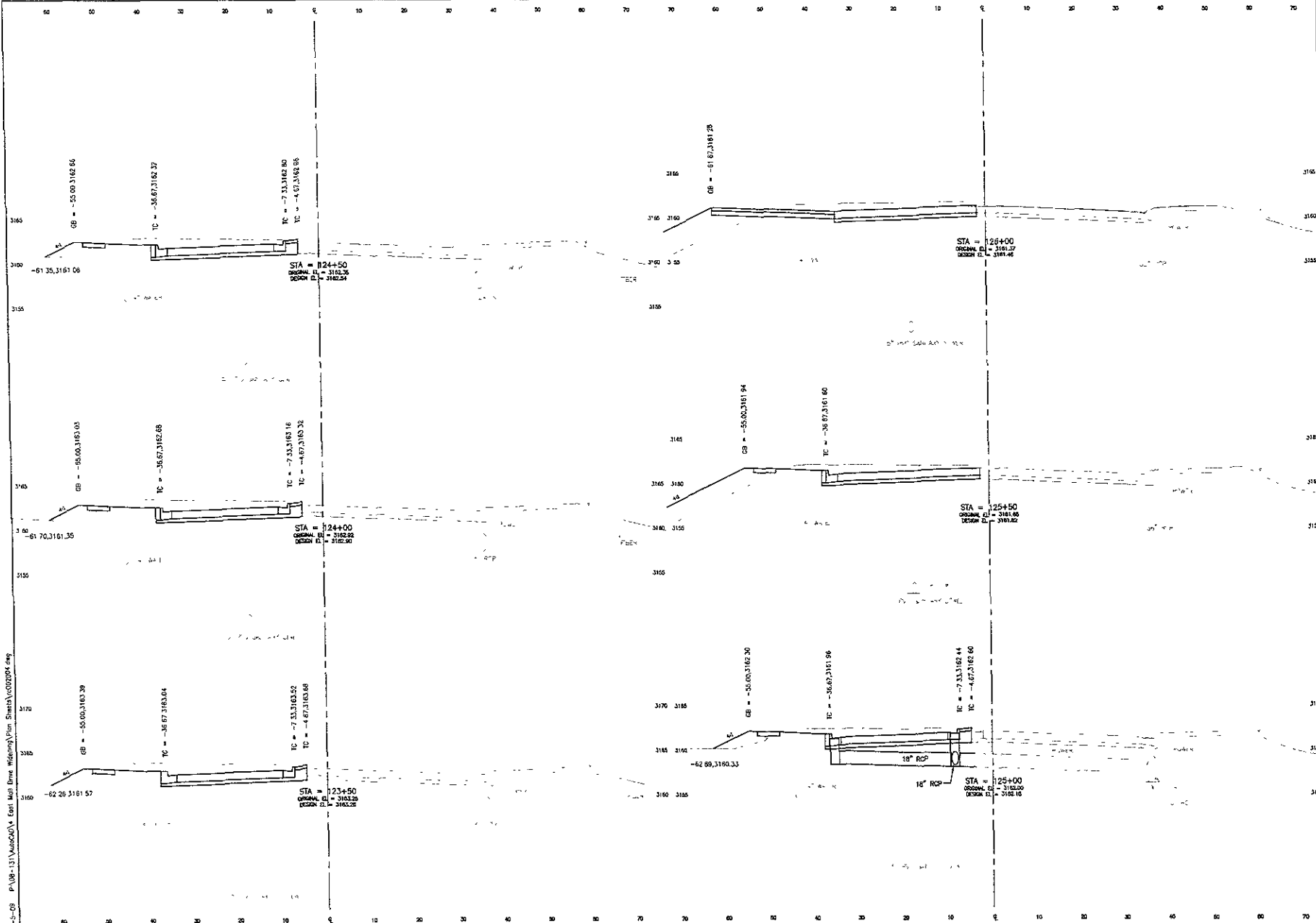
Ferber Engineering, Inc.
FEC
 Civil Engineering - Water Resources - Transportation - Land Services
 778 East Westbourne - Rapid City, SD 57701 - Phone: (605) 244-2211

NOT FOR CONSTRUCTION

Scale:	AS SHOWN
Designed By:	ARK
Drawn By:	DRS
Design Check:	DRS
Date:	OCT 2008
Project Name:	Q2 5-08
Sheet No.:	JOS-111
Prepared By:	SLA
Survey Date:	AUG 2008
Revisions:	

EAST MALL DRIVE WIDENING
TISH BOULEVARD TO DYESS AVENUE

02-5-09 P:\09-131\09SR012\Drawings\09SR012.dwg



Prepared for
Ferber Engineering, Inc.
 10000 North Street, Suite 100, Dallas, TX 75243
 Phone: (972) 331-1111

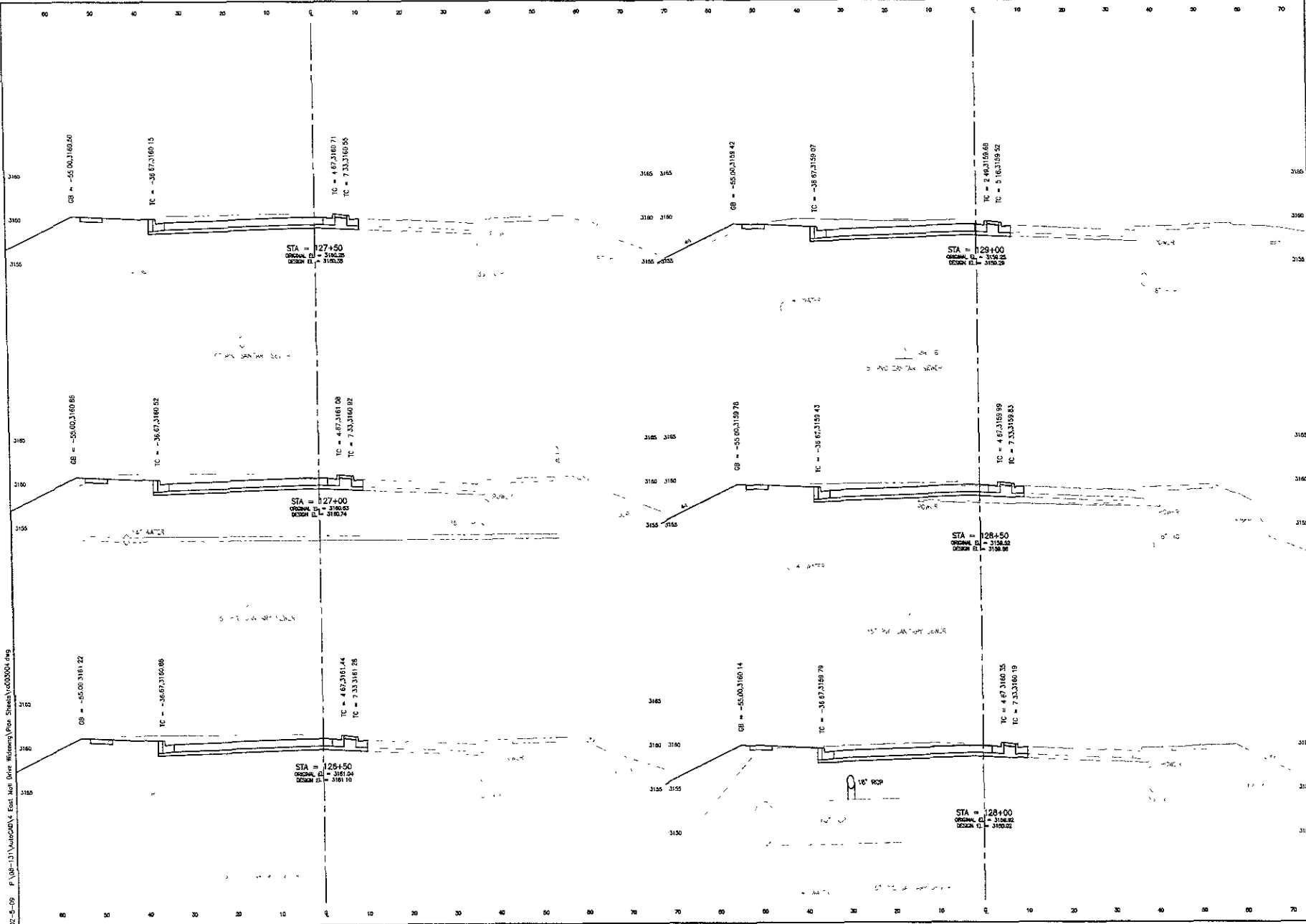
NOT FOR CONSTRUCTION

Scale: AS SHOWN
 Checked By: JLR
 Drawn By: JLR
 Project Date: OCT 2008
 Project Title: EAST MALL DRIVE WIDENING
 Surveyed By: JLR
 Survey Date: AUG 2008

**EAST MALL DRIVE WIDENING
 TISH BOULEVARD TO DYESS AVENUE**

Show Title: CROSS SECTIONS

Sheet: 24 of 29



02-5-09 P:\09-13\AutoCAD\4 - East Mall Drive Widening\Plot Sheets\02030104.dwg

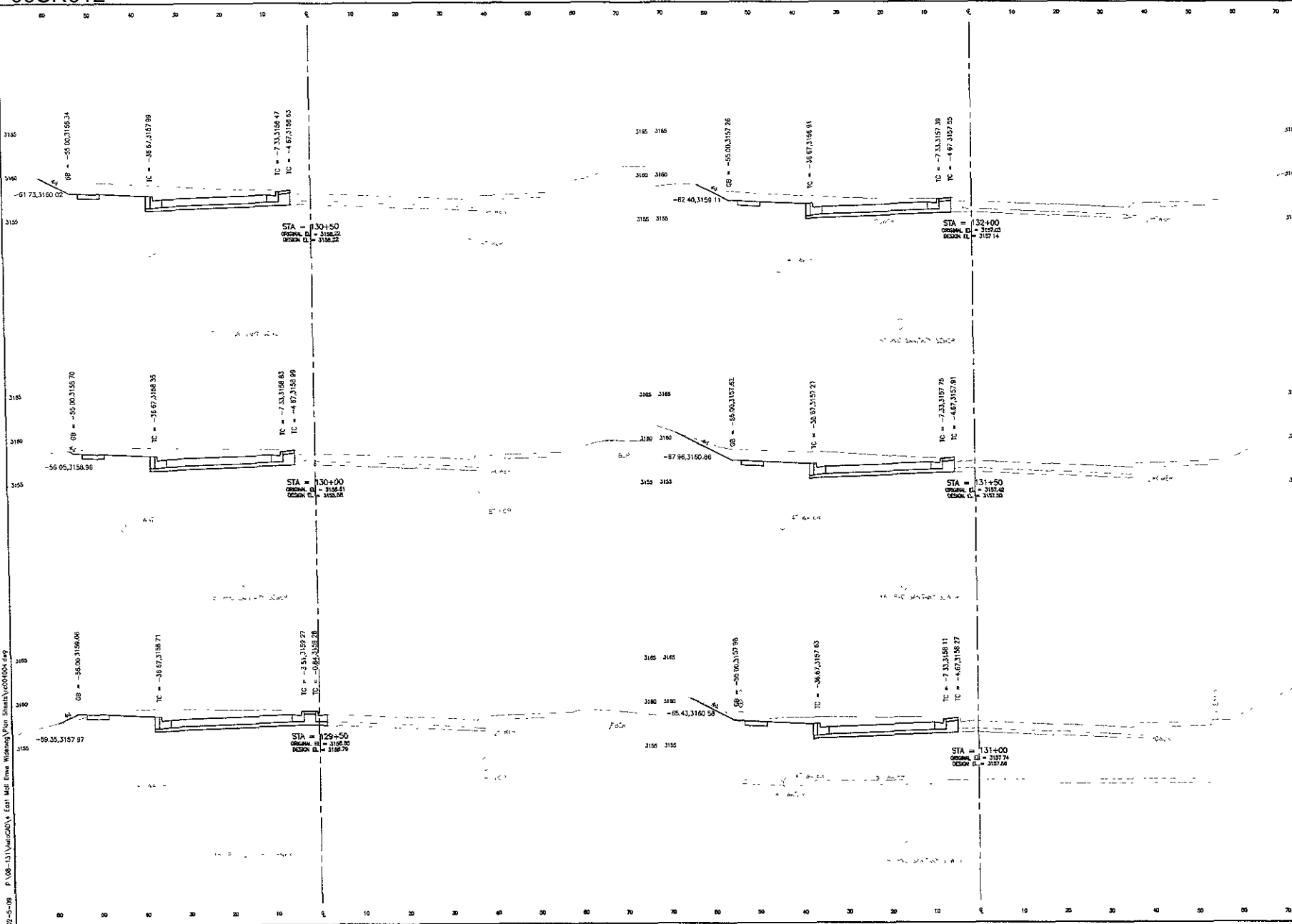


Ferber Engineering, Inc.
 240 Westwood Dr., Suite 200, St. Joseph, MO 64506
 Phone: (816) 433-1311
 Fax: (816) 433-1312
 Email: info@ferbereng.com

NOT FOR CONSTRUCTION

Scale	AS SHOWN
Designed By	DSB
Drawn By	DSB
Design Date	OCT 2008
Print Date	OCT 2008
Project No.	09-SR-131
Surveyed By	SLB
Survey Date	AUG 2008
Revisions	

EAST MALL DRIVE WIDENING
 TISH BOULEVARD TO DYESS AVENUE



02-5-08 P:\08-131\080901\East Mall Drive Widening\Plan Sheets\1001000.dwg

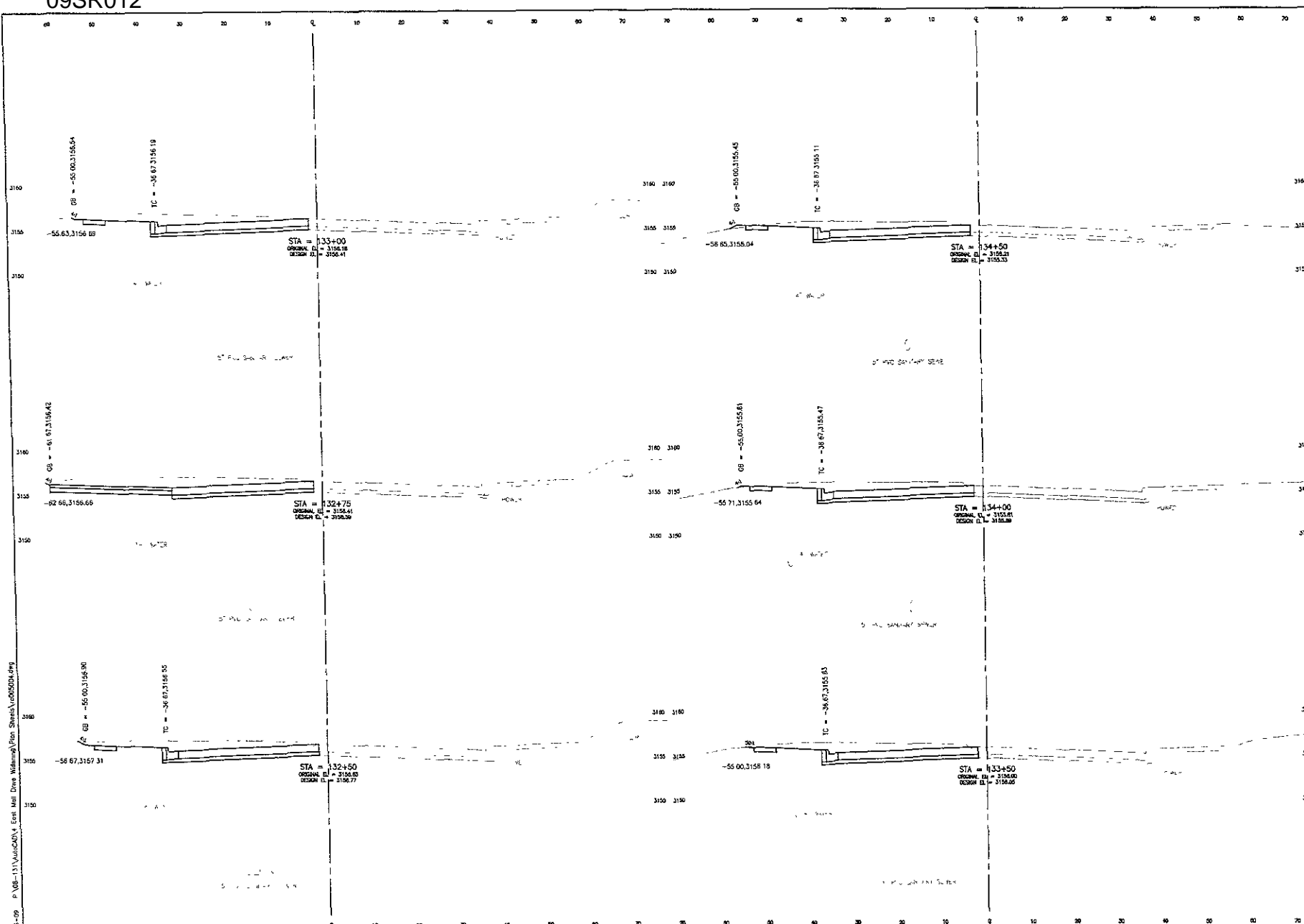


Prepared for:
FERBER ENGINEERING, INC.
 211184 Williamson St., Portland, OR 97228 • Phone: 503.481.1111

NOT FOR CONSTRUCTION

Scale	AS SHOWN
Designed By	Drawn By
Checked By	CRB
Design Date	Plot Date
OCT 2005	OCT 5-09
Trained Job No.	
205-131	
Surveyed By	Survey Date
SLA	AUG 2005
Revisions	

EAST MALL DRIVE WIDENING
 TISH BOULEVARD TO DYESS AVENUE



02-1-09 P:\08-131\AutoCAD\Y-East Mall Drive Widening\Plan Sheets\cd0508.dwg

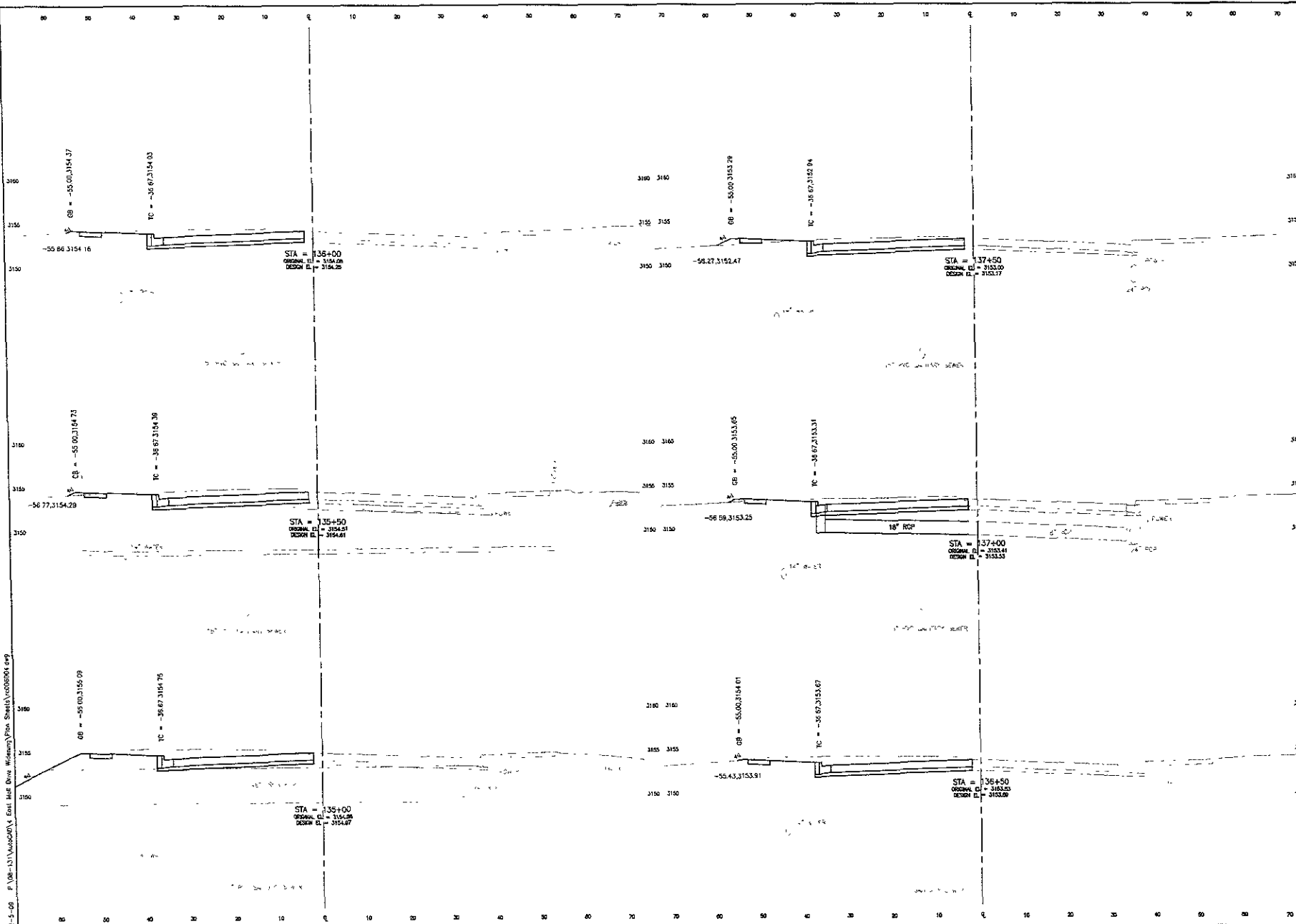


Ferber Engineering, Inc.
Civil Engineering • Water Resources • Transportation • Land Use Planning
214 East Merrimack Street, Suite 201 • Dover, NH 03824

NOT FOR CONSTRUCTION

Scale: AS SHOWN
 Designed By: ARK
 Drawn By: DNS
 Check Date: PMS Date
 OCT 2008 02-6-09
 Internal Job No.: 020-311
 Surveyed By: SIA
 Survey Date: AUG 2008

EAST MALL DRIVE WIDENING
TISH BOULEVARD TO DYESS AVENUE



02-5-09 P:\09-121\09SR012\09SR012.dwg (User: hfd) Plot: Sheet3 of 09SR012.dwg

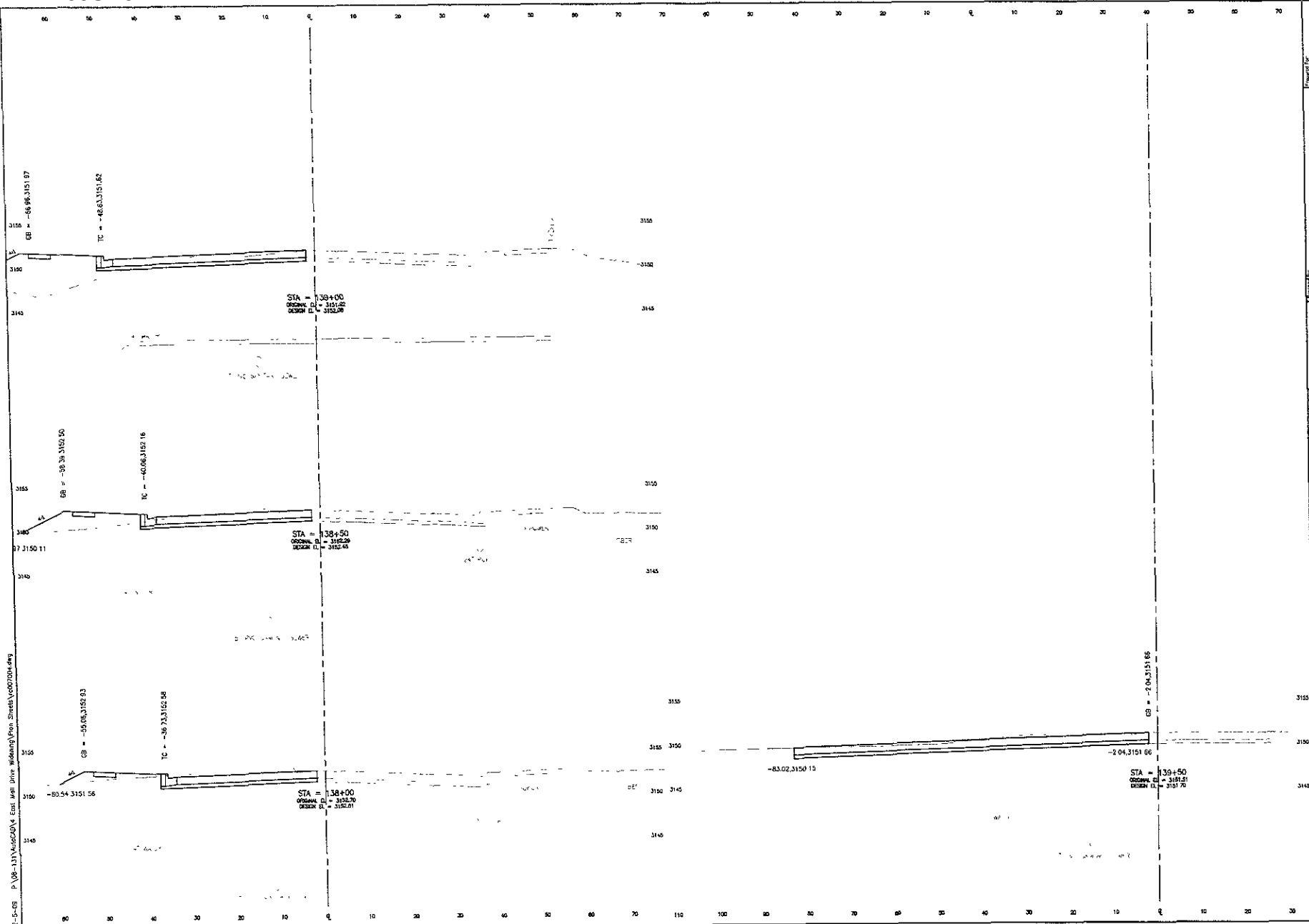


Prepared For
FERBER ENGINEERING, INC.
 Ferber Engineering, Inc.
 210 East 17th Street, Suite 200
 Erie, PA 16590-1700
 Phone: (814) 833-1111
 Fax: (814) 833-1112
 Email: info@ferbereng.com

NOT FOR CONSTRUCTION

Scale:	AS SHOWN
Designed By:	DRG
Drawn By:	DRG
Check Date:	OCT 2008
Issue Date:	02-5-09
Project No.:	09-121
Surveyed By:	Survey Date
Scale:	AUG 2008

EAST MALL DRIVE WIDENING
 TISH BOULEVARD TO DYESS AVENUE



P:\08-1174\09SR012\East Mall Drive Widening\Plan Sheets\09SR012.dwg
 02-25-08 P:\08-1174\09SR012\East Mall Drive Widening\Plan Sheets\09SR012.dwg



Ferber Engineering, Inc.
 Civil Engineers • Surveyors • Transportation • Land Surveying
 P.O. Box 100, New Hope, PA 19380-0100

NOT FOR CONSTRUCTION

Scale	AS SHOWN
Checked By	DRS
Drawn By	DRS
Design Date	02-25-08
Print Date	02-25-08
Internal Job No.	08-131
Checked by	SLA
Drawn Date	AUG 2008
Revision	

EAST MALL DRIVE WIDENING
 TISH BOULEVARD TO DYESS AVENUE