

09SR011



SANITARY SEWER NOTES

- STA 85+75.0 - 0.0 LT CONNECT TO EXISTING MANHOLE
- STA 85+75.0 - 0.0' LT TO STA 85+75.0 - 29.7' LT
- STA 85+75.0 - 29.7' LT
- STA 85+75.0 - 29.7' LT TO STA 86+52.3 - 29.7' LT
- STA 86+52.3 - 29.7' LT
- STA 86+52.3 - 29.7' LT TO STA 93+30.2 - 29.7' LT
- STA 93+30.2 - 29.7' LT
- INSTALL 30 LF - 2" PVC SANITARY SEWER FORCE MAIN
- INSTALL CO 1
- INSTALL 378 LF - 2" PVC SANITARY SEWER FORCE MAIN
- INSTALL CO 2
- INSTALL 393 LF - 2" PVC SANITARY SEWER FORCE MAIN

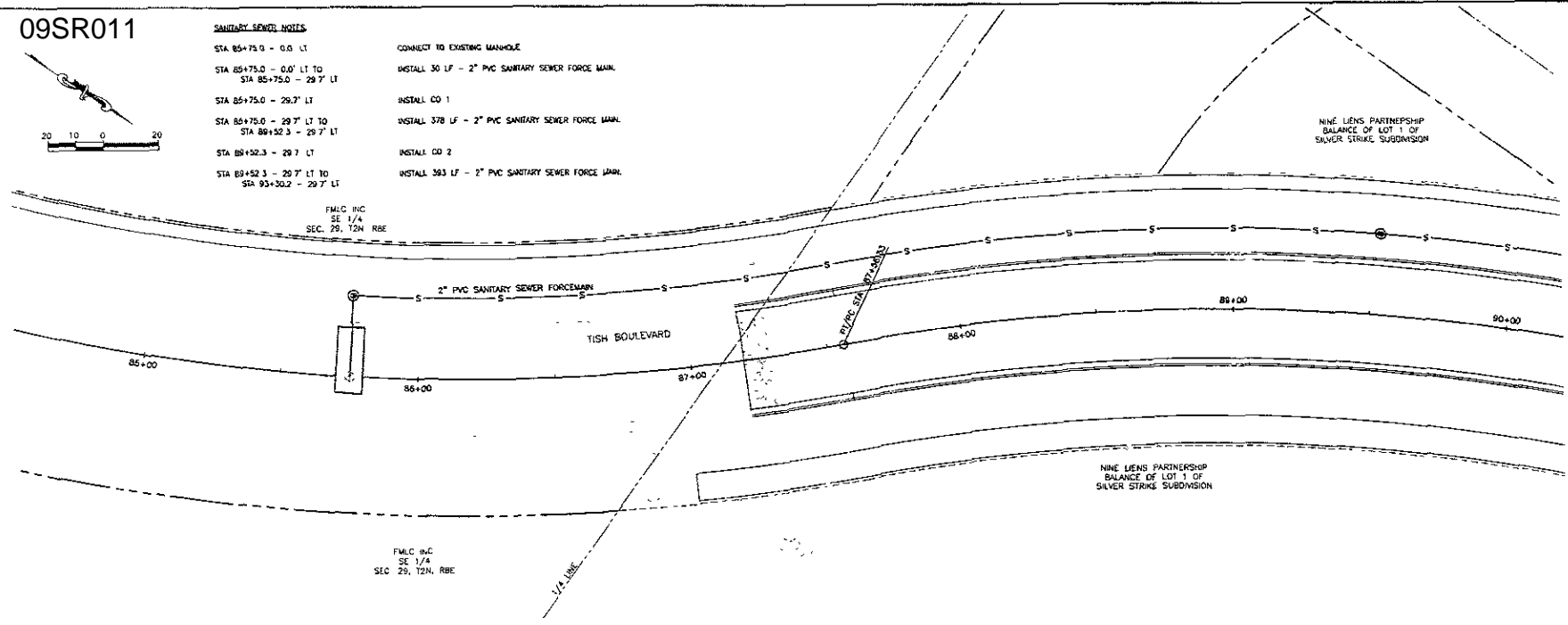
F.M.C. INC.
SE 1/4
SEC. 29, T2N, R8E

F.M.C. INC.
SE 1/4
SEC. 29, T2N, R8E

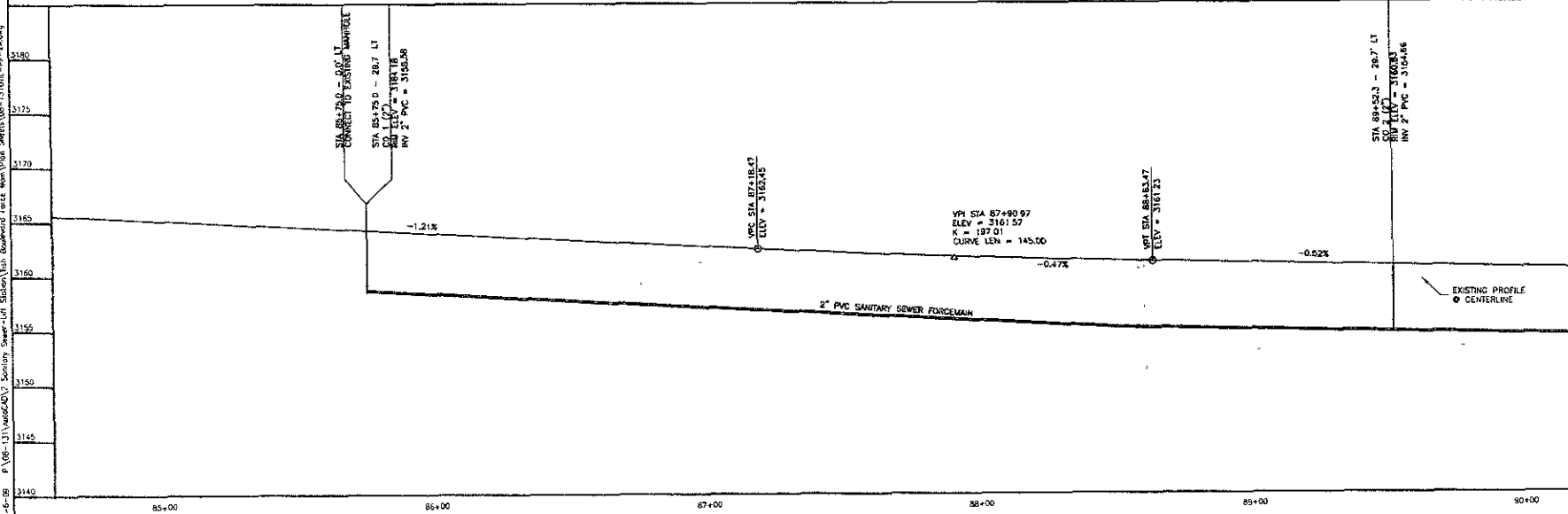
NINE LENS PARTNERSHIP
BALANCE OF LOT 1 OF
SILVER STRIKE SUBDIVISION

NINE LENS PARTNERSHIP
BALANCE OF LOT 1 OF
SILVER STRIKE SUBDIVISION

TISH BOULEVARD



D:\09-131\09SR011\Sanitary Sewer - Lift Station\Tish Boulevard Force Main\Plan Sheets\09-131\011-PP-20.dwg



Prepared by
Ferber Engineering, Inc.
Civil Engineering - Water Resources - Transportation - Land Surveying
225 East 10th Street, Suite 200, Des Moines, IA 50319
Phone: (515) 261-1111

Scale	AS SHOWN
Checked by	Drawn by
ARIC	DRS
Design Date	Print Date
FEB 2009	02-04-09
Project No.	
ISS 131	
Reviewed by	Survey Date
SLA	AUG 2008
Revisions	

TISH BOULEVARD SANITARY SEWER FORCE MAIN

Sheet Title
3145 UTILITY PLAN & PROFILE
STA 84+60 90+20

3 of 6

09SR011

FMLC INC
NW 1/4
SEC 29, T24, R9E

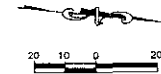
SANITARY SEWER NOTES:

STA 93+30.2 - 29.7' LT

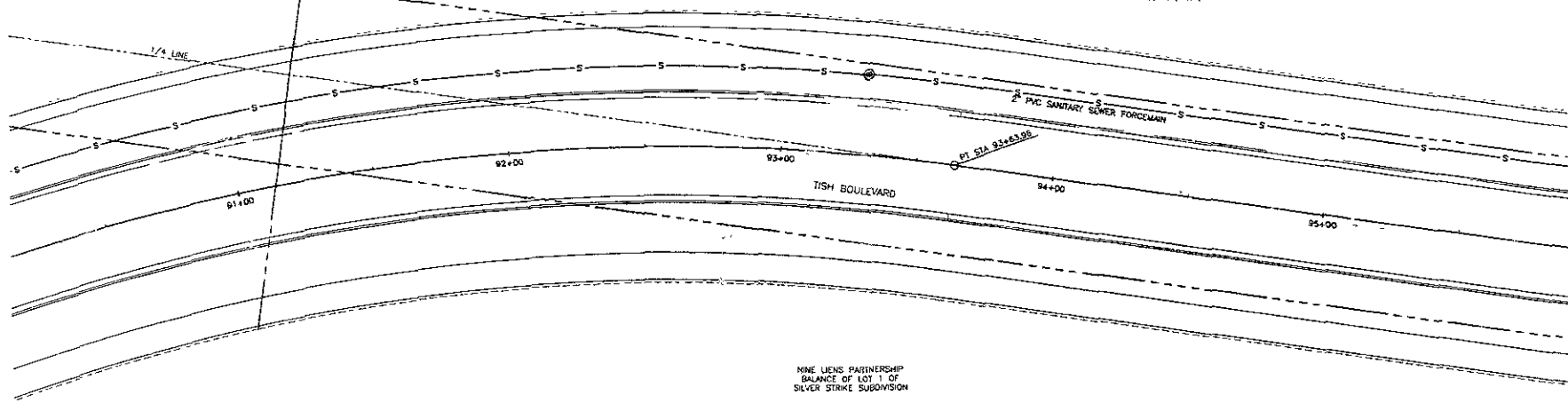
INSTALL CD 3

STA 93+30.2 - 29.7' LT TO
STA 97+08.3 - 29.7' LT

INSTALL 379 LF - 2" PVC SANITARY SEWER FORCE MAIN



FMLC INC
LOT C OF NW 1/4
SEC 29, T24, R9E



MINE UENS PARTNERSHIP
BALANCE OF LOT 1 OF
SILVER STRIKE SUBDIVISION



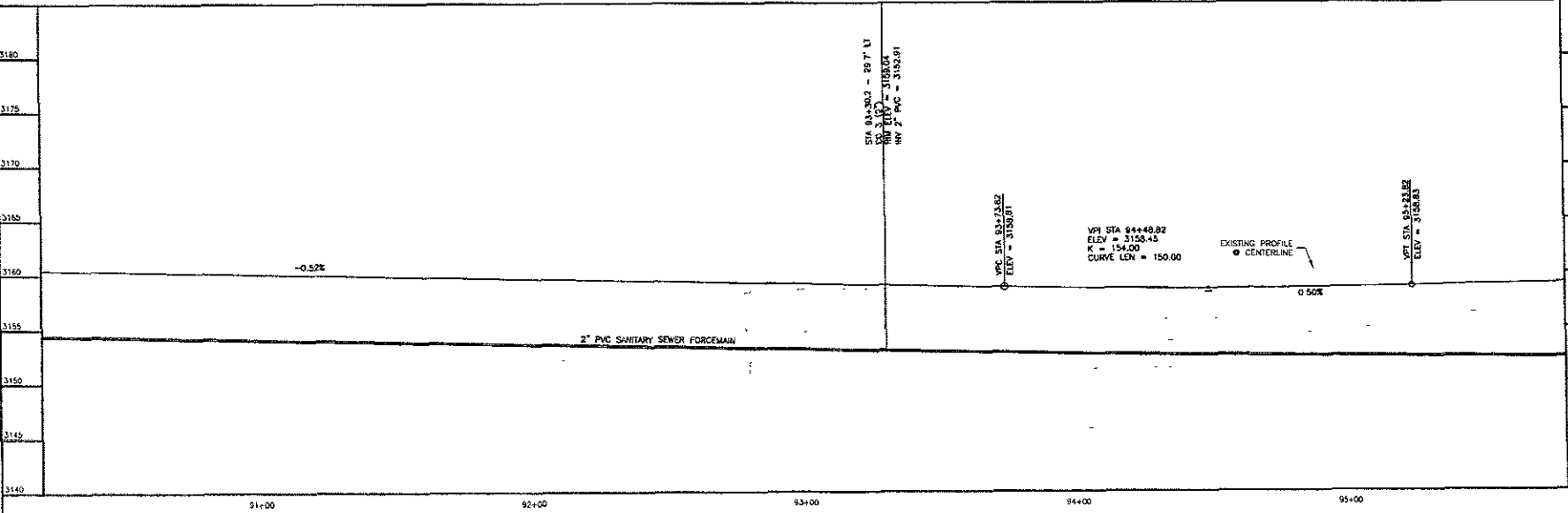
PROPERTY OF
North Street Fire Station LLC

PROPERTY OF
Ferber Engineering, Inc.
Civil Engineering Surveying Photogrammetric Land Surveying
1001 15th Street, Suite 200, Grand Rapids, MI 49503-1511

LOT 1774 CON-1774.010

Date:	AS SHOWN
Designed By:	Drawn by:
APC	ENS
Design Date:	Print Date:
FEB 2009	02-0-09
Sheet No. of:	
108-131	
Checked By:	Survey Date:
SL	AUG 2008
Revisions:	

09-S-09 P:\08-03\A\08000\2_Sanitary Sewer-Lot1 Station\108-131\108-131.dwg



TISH BOULEVARD SANITARY SEWER
FORCE MAIN

Sheet Title
UTILITY PLAN & PROFILE
STA 90+20 - 95+80

09SR011

SANITARY SEWER NOTES

STA 97+68.3 - 29' 7" LT
 STA 97+68.3 - 29' 7" LT TO
 STA 100+92.9 - 29' 7" LT
 STA 100+92.9 - 29' 7" LT

INSTALL CO 4
 INSTALL 365 LF - 2" PVC SANITARY SEWER FORCE MAIN
 INSTALL CO 5 (TERMINATION CLEAROUT)

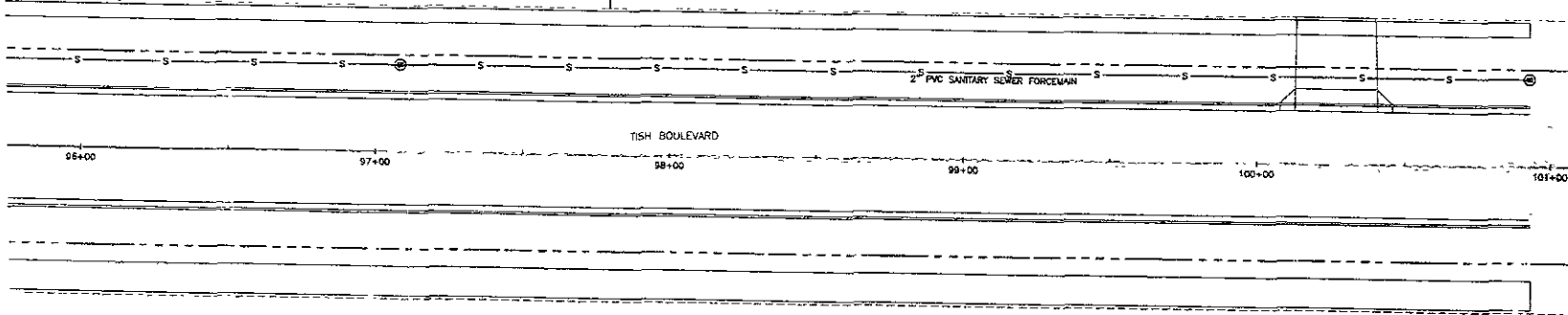


FMLC INC
 LOT C OF NW 1/4
 SEC 29 T2N R8E

FMLC INC
 NW 1/4
 SEC 29, T2N R8E

DONALD W. GORLEAN
 SE 1/4
 NE 1/4 NW 1/4
 SEC 29 T2N R8E

Ferber Engineering Company, Inc.
 Civil Engineering • Water Resources • Transportation • Land Surveying
 128 East Main Street, St. Paul, MN 55101 Phone: (651) 342-2211

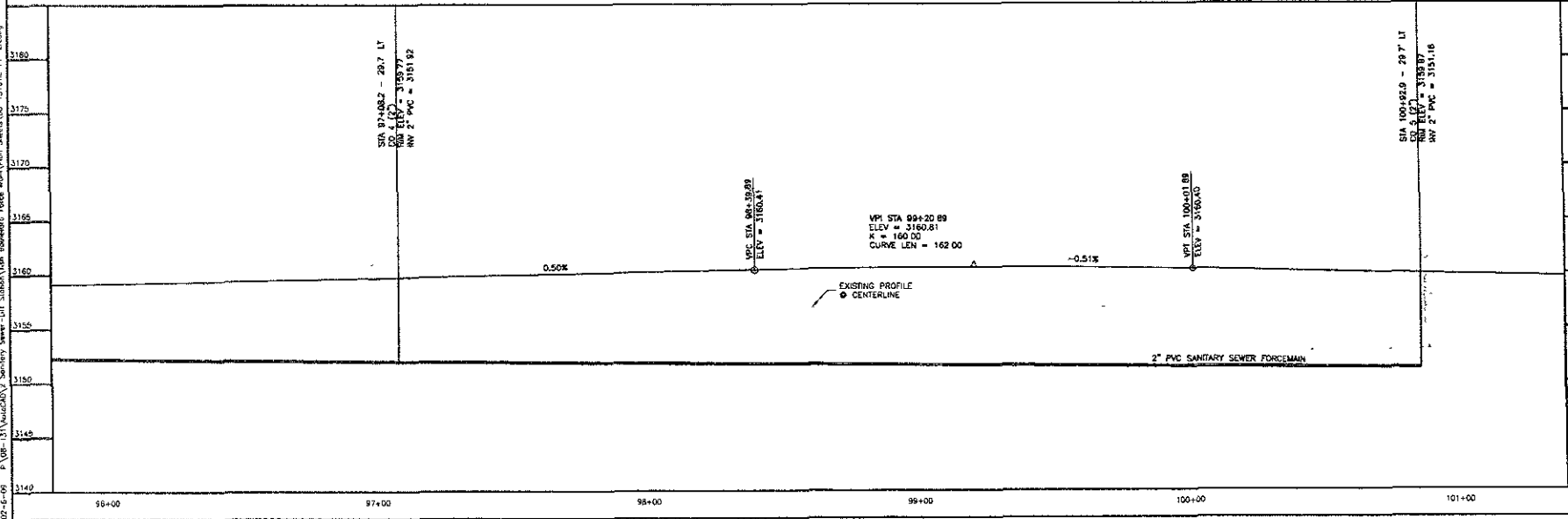


TISH BOULEVARD

96+00 97+00 98+00 99+00 100+00 101+00

AS SHOWN
 Checked by: ARK
 Drawn by: DRS
 Design Date: FEB 2008
 Issue Date: 02-6-08
 Job No: J08-171
 Surveyed by: SLA
 Survey Date: AUG 2008

09-SR-011 (08-21) (Revised) 3-Sheet (of 3) Sheets - 100' Stationing - Force Main (VBS-131) UTILITY - PP-2A.dwg



STA 97+68.2 - 29' 7" LT
 CO 4 (12')
 INV ELEV = 3159.77
 INV 2" PVC = 3151.92

VPI STA 98+09.89
 ELEV = 3180.41

VPI STA 99+20.89
 ELEV = 3160.81
 R = 160.00
 CURVE LEN = 162.00

VPI STA 100+01.89
 ELEV = 3160.40

STA 100+92.9 - 29' 7" LT
 CO 5 (12')
 INV ELEV = 3159.17
 INV 2" PVC = 3151.16

TISH BOULEVARD SANITARY SEWER
 FORCE MAIN

Sheet Title
 UTILITY PLAN & PROFILE
 STA 96+80 - 101+40