

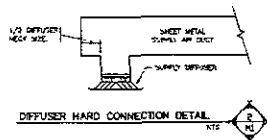
CONDENSING UNIT SCHEDULE							
MARK	MANUFACTURER	MODEL NO.	RTN TOTAL CAPACITY	SEER	HP	HIS. STG.	ELECTRICAL
CU1	TRANE	4TAXR60A0	60.00	13	26	ESL-240	200-200-72-93

RECEPT AND OUTLET SCHEDULE						
MARK	NAME/FUNCTION	NO. OF	FUNCTION	TYPE	FINISH	MARK
A	PRICE	300	SUPPLY	1/4" IN.	3/4"	F
B	PRICE	300	TRANSF.	1/4" IN.	3/4"	F

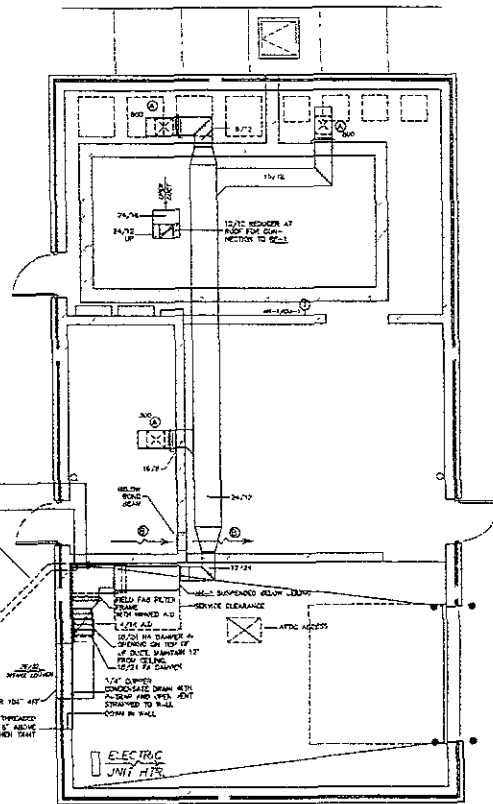
NOTES:
 1. DOUBLE OUTLET
 2. POINT SINGLE 45 DEGREE BLADES (UPWARD) LOCATE BELOW BOUD BEAM

AN HANDED SCHEDULE	
NAME	HP-1
MANUFACTURER	TRANE
MODEL NO.	ATE-20-1/2
CFM	1000
EQIP	1/2"
SPEED TAP	1/2"
HP	1/2"
ELECTRICAL	600/240
COIL AMP	4.3
COIL EXT. AMP	30-40
TOTAL COOLING	31,400

FAN SCHEDULE	
MARK	HP-1
TYPE	NO. 1
MANUFACTURER	GREENHART
MODEL NO.	GA 12-1
FAN	IDENTIFICATION
CFM	1000
SP	1/2"
DN	1/2"
HP	1/2"
FAN HP	1/2"
ELECTRICAL	120-2-40
DRIVE	1/2"
CONTROL	BY ATC
REMARKS	INTERNAL 1 DIVIDING



CONDENSATION PIPING SIZES AS RECOMMENDED BY SYSTEM MANUFACTURER
 OFFSET FROM SURFACE HEIGHT TO CONDENSATE PIPING FLOOR
 MARKING AT 1/4" DIA. PIPE THROUGH FOUNDATION WALL AND UNDERGROUND FOR REINFORCING PIPING CONDUIT PACK EACH END WITH DRAIN AND UNPLUG WEATHERSTRIP (ONE FT. WASH WATER)



MECHANICAL PLAN
 SHEET 1-3

PRELIMINARY PLAN
 NOT FOR CONSTRUCTION
 9/28/04
 PRAIRIE ENGINEERING, P.C.

PROJECT NO. 09SR010
 DRAWING NO. 100
 DATE: 09/28/04
 SHEET NO. 34

KADRMAS, LEE & JACKSON, INC.
 ENGINEERS & ARCHITECTS
 1001 W. BROADWAY, SUITE 210
 RAPID CITY, SOUTH DAKOTA 57701

PRAIRIE ENGINEERING, P.C.
 MECHANICAL ENGINEERS
 1001 W. BROADWAY, SUITE 210
 RAPID CITY, SOUTH DAKOTA 57701

**RAPID CITY REGIONAL AIRPORT
 ELECTRICAL VAULT BUILDING**
 1001 W. BROADWAY, SUITE 210
 RAPID CITY, SOUTH DAKOTA 57701

M-1
 OF 1