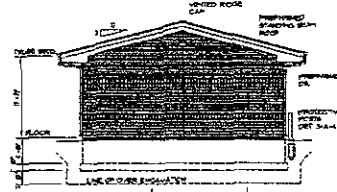
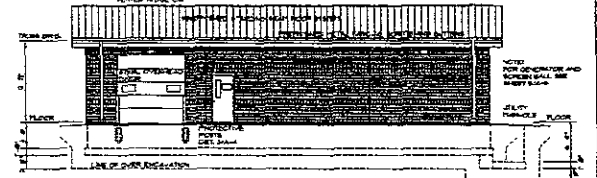


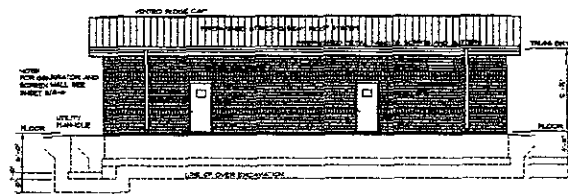
**FLOOR PLAN**  
1/4" = 1'-0"



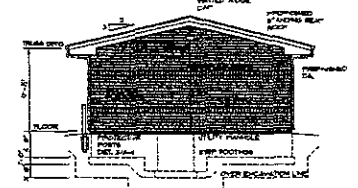
**SOUTH ELEVATION**  
1/4" = 1'-0"



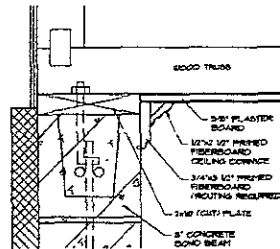
**EAST ELEVATION**  
1/4" = 1'-0"



**WEST ELEVATION**  
1/4" = 1'-0"



**NORTH ELEVATION**  
1/4" = 1'-0"

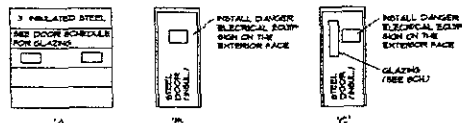


**CORNICE DETAIL**  
3/4" = 1'-0"

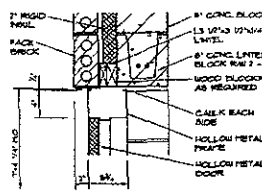
ROOM NUMBER	ROOM NAME	BLOCK (WALL)		GILLS (CEILING)		PAINTING	
		TYPE	THICKNESS	TYPE	THICKNESS	FINISH	REMARKS
REG. REGULATOR ROOM	REG. REGULATOR ROOM	CONCRETE	8"	PLASTER BOARD	1/2"	PAINT	DO NOT PAINT HYDRANT FITTINGS
REG. EQUIPMENT ROOM	REG. EQUIPMENT ROOM	CONCRETE	8"	PLASTER BOARD	1/2"	PAINT	DO NOT PAINT HYDRANT FITTINGS
REG. ELECTRICAL ROOM	REG. ELECTRICAL ROOM	CONCRETE	8"	PLASTER BOARD	1/2"	PAINT	DO NOT PAINT HYDRANT FITTINGS
REG. COMMUNICATIONS ROOM	REG. COMMUNICATIONS ROOM	CONCRETE	8"	PLASTER BOARD	1/2"	PAINT	DO NOT PAINT HYDRANT FITTINGS

DO NOT PAINT HYDRANT FITTINGS  
PAINTING SHALL INCLUDE BUT NOT LIMITED TO THE FOLLOWING LIST:  
 1. STEEL DOORS, FRAMES AND LINTELS  
 2. OVERHEAD DOOR STEEL LINTEL AND JAMBES  
 3. BRICK CORNICE AND GUTTERS  
 4. PLYWOOD TERMINAL BOARDS  
 5. EXTERIOR ELECTRICAL SERVICES BOX CONDUITS  
 6. WOOD ARCH. ACCESS HATCHES AND TRYS

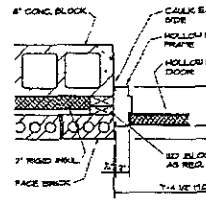
DOOR NO.	DOOR SIZE	DOOR TYPE	FRAME TYPE	GLASS	LOWER	THREADED	REMARKS
AREA 1	3'-0" x 7'-0"	C	HT	C	HT	HT	INSULATED DOOR & 3/4" GLASS
AREA 2	3'-0" x 7'-0"	C	HT	C	HT	HT	INSULATED DOOR & 3/4" GLASS
AREA 3	3'-0" x 7'-0"	C	HT	C	HT	HT	INSULATED DOOR & 3/4" GLASS
AREA 4	3'-0" x 7'-0"	C	HT	C	HT	HT	INSULATED DOOR & 3/4" GLASS



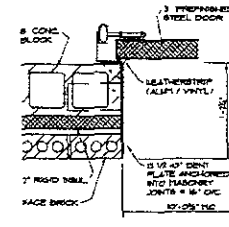
**DOOR TYPES**  
1/4" = 1'-0"



**HEAD DETAIL**  
1/4" = 1'-0"



**JAMB DETAIL**  
1/4" = 1'-0"



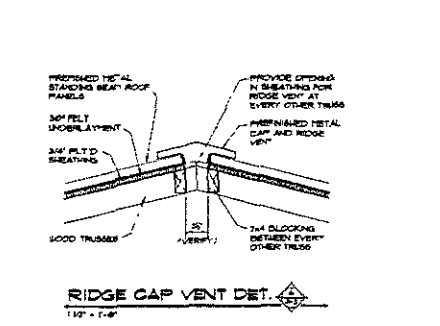
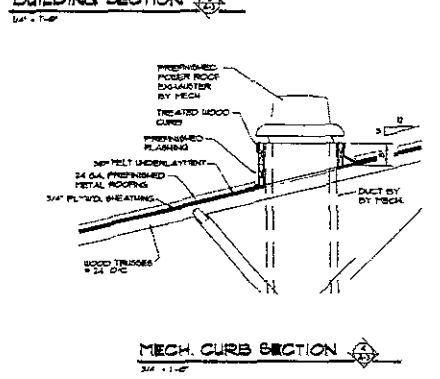
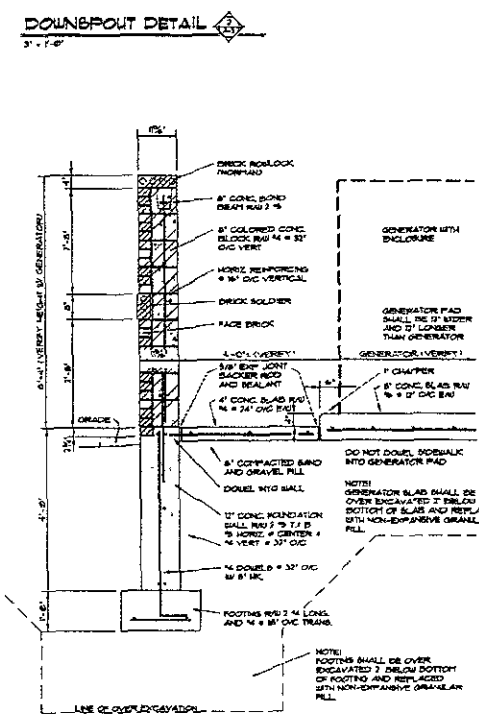
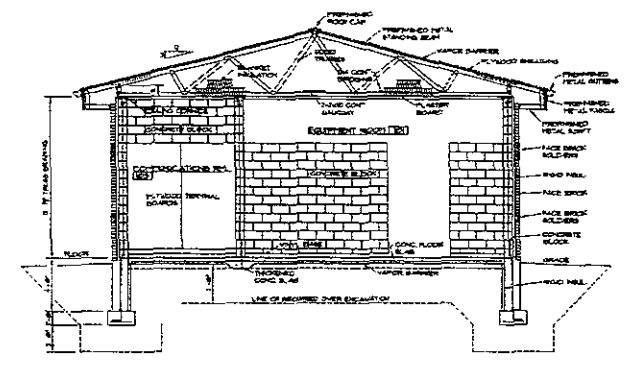
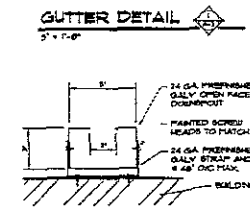
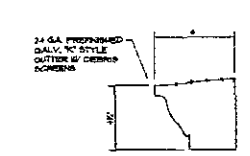
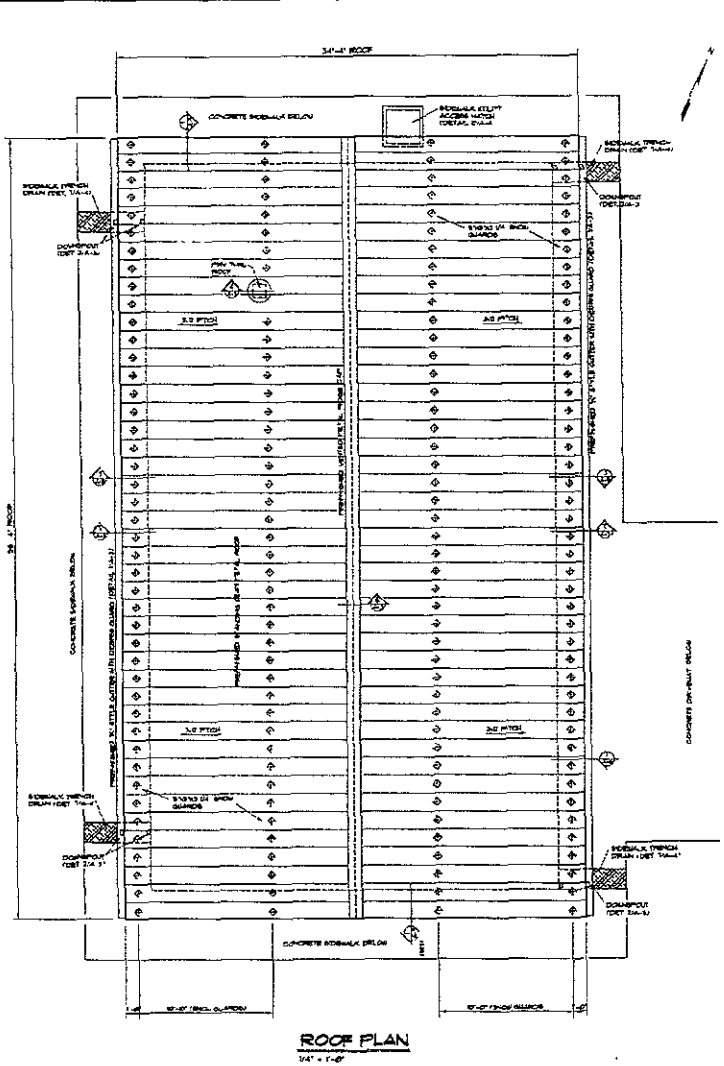
**JAMB DETAIL**  
1/4" = 1'-0"

KADIMAS, LEE & JACKSON, INC.  
INGENIERS, ARCHITECTS & PLANNERS  
RAPID CITY, SOUTH DAKOTA 57701

PRAIRIE ENGINEERING, P.C.  
MECHANICAL ENGINEERS  
SIOUX FALLS, SOUTH DAKOTA 57104

RAPID CITY REGIONAL AIRPORT  
ELECTRICAL VAULT BUILDING  
RAPID CITY, SIOUX FALLS COUNTY, SOUTH DAKOTA

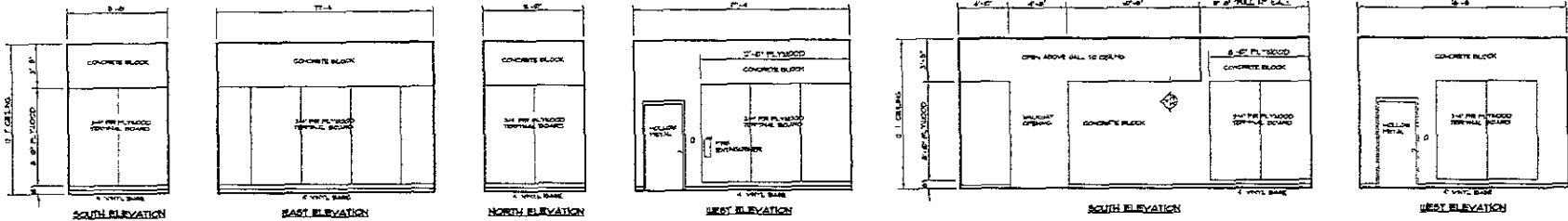
A-2



**KADRAMAS, LEE & JACKSON, INC.**  
ENGINEERS, ARCHITECTS & PLANNERS  
RAPID CITY, SOUTH DAKOTA 57701

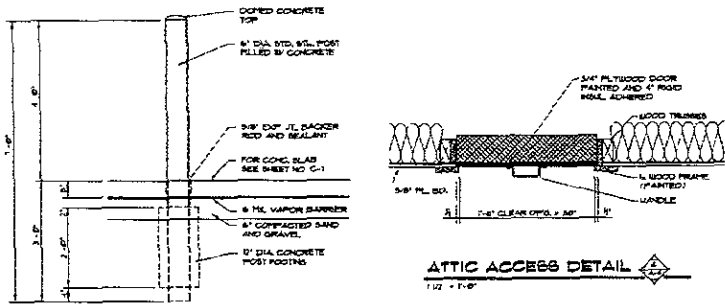
**PRAIRIE ENGINEERING, P.C.**  
STRUCTURAL ENGINEER  
SIOUX FALLS, SOUTH DAKOTA 57104

**RAPID CITY REGIONAL AIRPORT ELECTRICAL VAULT BUILDING**  
RAPID CITY, NEBRASKA COUNTY, SOUTH DAKOTA

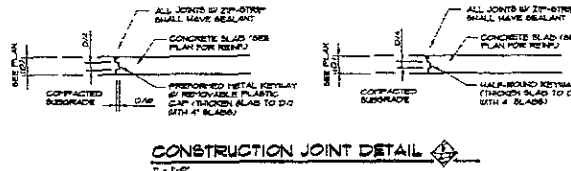


**WALL ELEVATIONS - COMMUNICATIONS ROOM NO. 103**  
1/4" = 1'-0"

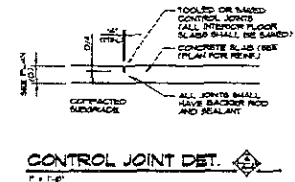
**WALL ELEVATIONS - REGULATOR ROOM NO. 100**  
1/4" = 1'-0"



**ATTIC ACCESS DETAIL**  
1/2" = 1'-0"

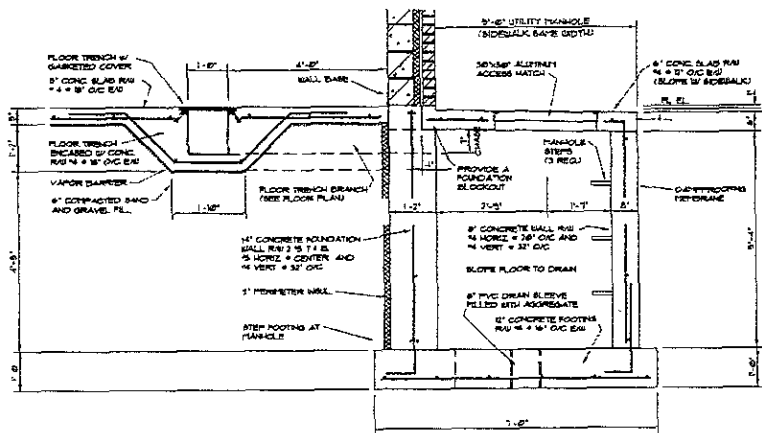


**CONSTRUCTION JOINT DETAIL**  
1" = 1'-0"

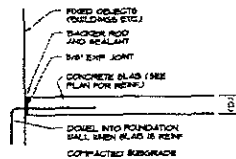


**CONTROL JOINT DET.**  
1" = 1'-0"

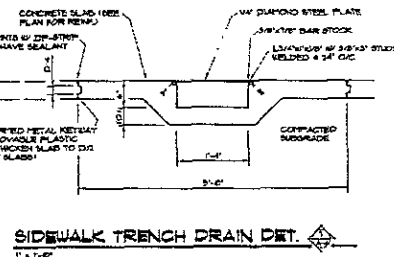
**GUARD POST DETAIL**  
3/4" = 1'-0"



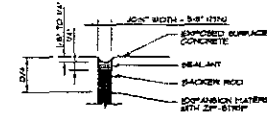
**FLOOR TRENCH & MANHOLE DETAIL**  
3/4" = 1'-0"



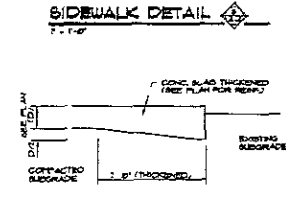
**EXP. JOINT DETAIL**  
1" = 1'-0"



**SIDEWALK TRENCH DRAIN DET.**  
1" = 1'-0"



**JOINT SEAL DETAIL**  
NO SCALE

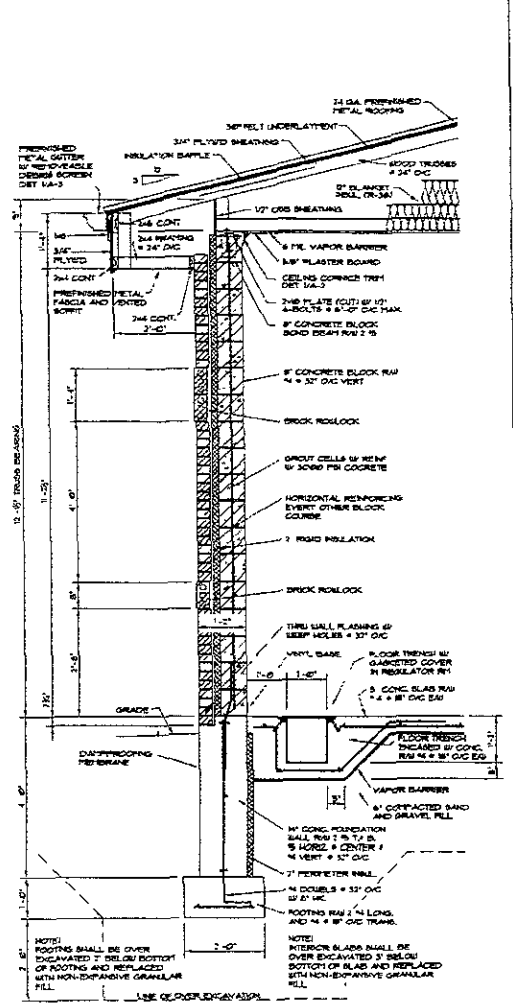
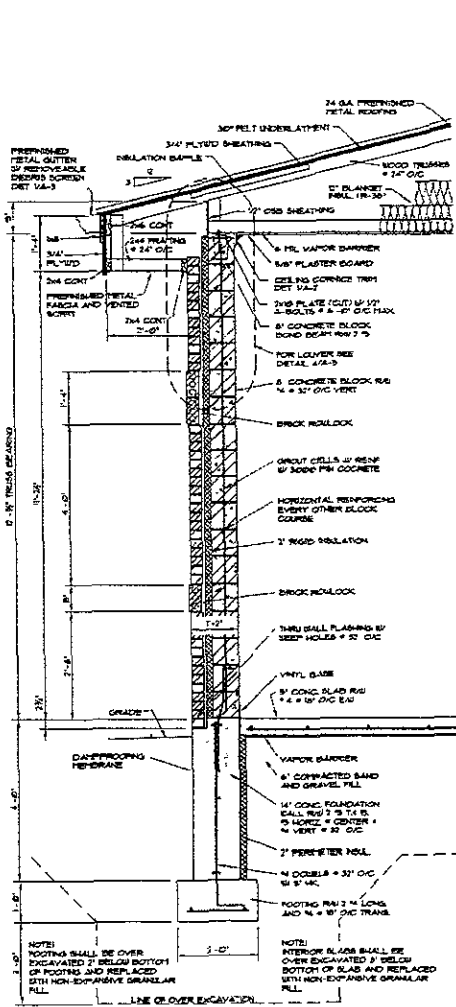
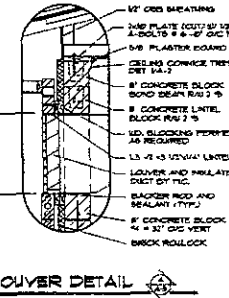
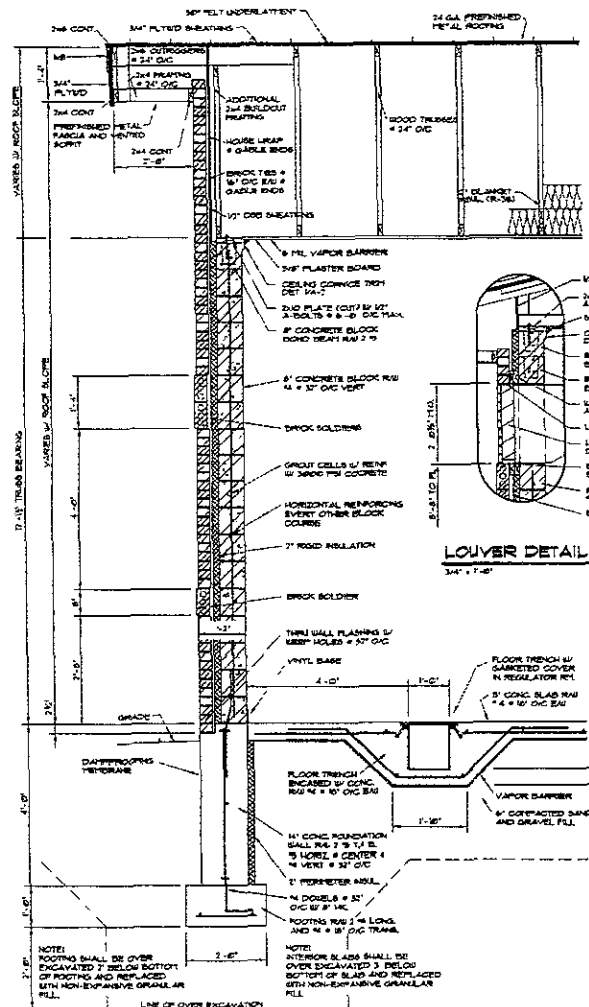


**THICKENED EDGE SLAB**  
1" = 1'-0"

PRAIRIE VALLEY  
KADRMAS, LEE & JACKSON, INC.  
REGISTERED PROFESSIONAL ENGINEERS  
STATE OF ILLINOIS  
1000 N. WYOMING ST. SUITE 200  
DUNDAS, ILLINOIS 62526

PRAIRIE ENGINEERING, P.C.  
REGISTERED PROFESSIONAL ENGINEERS  
1000 N. WYOMING ST. SUITE 200  
DUNDAS, ILLINOIS 62526

RAPID CITY REGIONAL AIRPORT  
ELECTRICAL VAULT BUILDING  
RAPID CITY, SOUTHERN COUNTY, SOUTH DAKOTA  
A-4  
DP 6

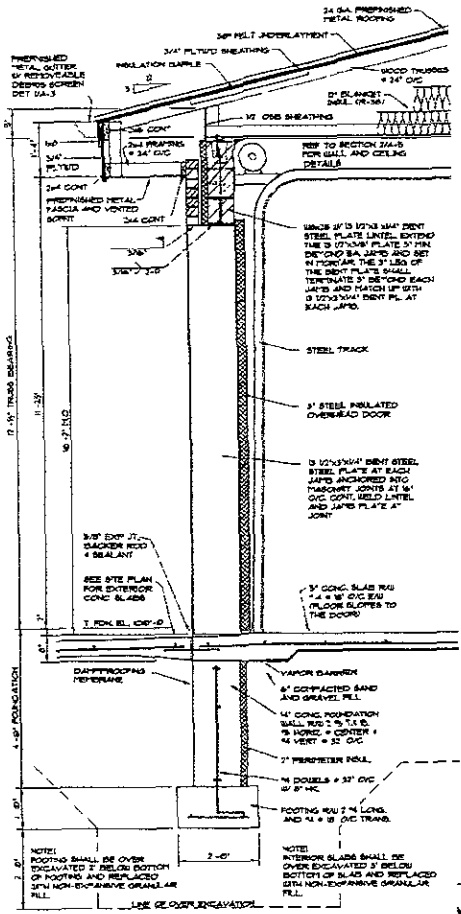


PROJECT NO. 09SR010  
 DATE: 05-28-2009  
 DRAWN BY: J. L. JACOBSON  
 CHECKED BY: J. L. JACOBSON  
 SCALE: AS SHOWN

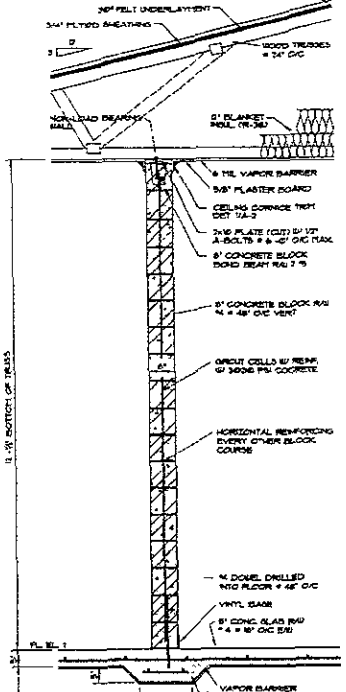
**KADRMAS, LEE & JACKSON, INC.**  
 ENGINEERS & ARCHITECTS  
 11001 N. 10TH STREET, SUITE 100  
 RICHIE, TEXAS 75486

**PRAIRIE ENGINEERING, P.C.**  
 WELLSVILLE ENGINEER  
 1000 W. 11TH STREET  
 WELLSVILLE, NORTH DAKOTA 58079

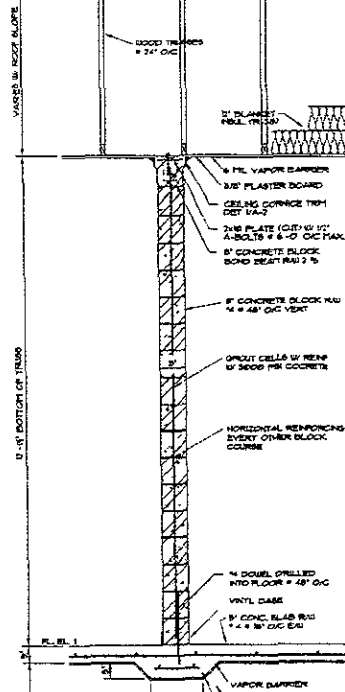
**RAPID CITY REGIONAL AIRPORT  
 ELECTRICAL VAULT BUILDING**  
 WELLSVILLE ENGINEER  
 RICHIE CITY, SOUTHERN COUNTY, NORTH DAKOTA



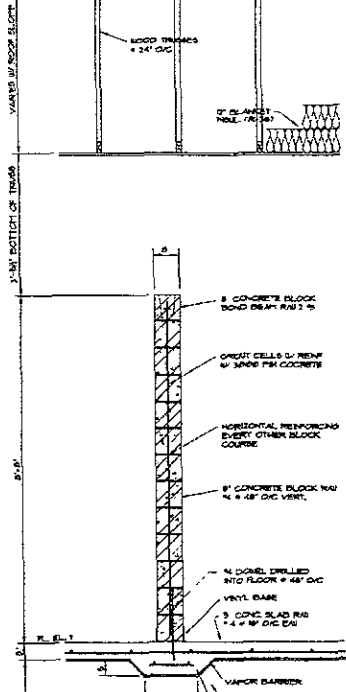
**WALL SECTION**  
5/4" x 7'-0"



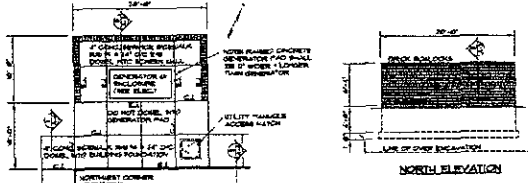
**WALL SECTION**  
5/4" x 7'-0"



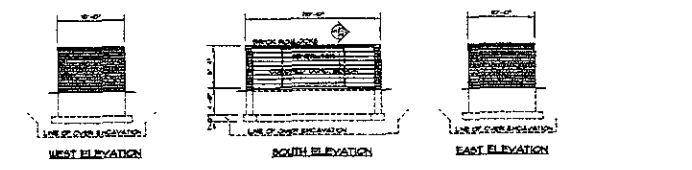
**WALL SECTION**  
5/4" x 7'-0"



**WALL SECTION**  
5/4" x 7'-0"



**GENERATOR 4 SCREEN PLAN**  
18' x 7'-0"



**GENERATOR SCREEN ELEV.**  
18' x 7'-0"

PROJECT NO. 09SR010  
SHEET NO. 604  
DATE: 08/21/18  
DRAWN BY: [REDACTED]  
CHECKED BY: [REDACTED]

**KADRMAS, LEE & JACKSON, INC.**  
ENGINEERS, ARCHITECTS & PLANNERS  
RAPID CITY, SOUTH DAKOTA 57709

**PRAIRIE ENGINEERING, P.C.**  
ARCHITECTS & ENGINEERS  
RAPID CITY, SOUTH DAKOTA 57709

**RAPID CITY REGIONAL AIRPORT  
ELECTRICAL VAULT BUILDING**  
RAPID CITY, SOUTH DAKOTA

File: 05\_2008 - 1.dwg; PLOT: 05/21/2018 10:07:16 AM 130711011.dwg