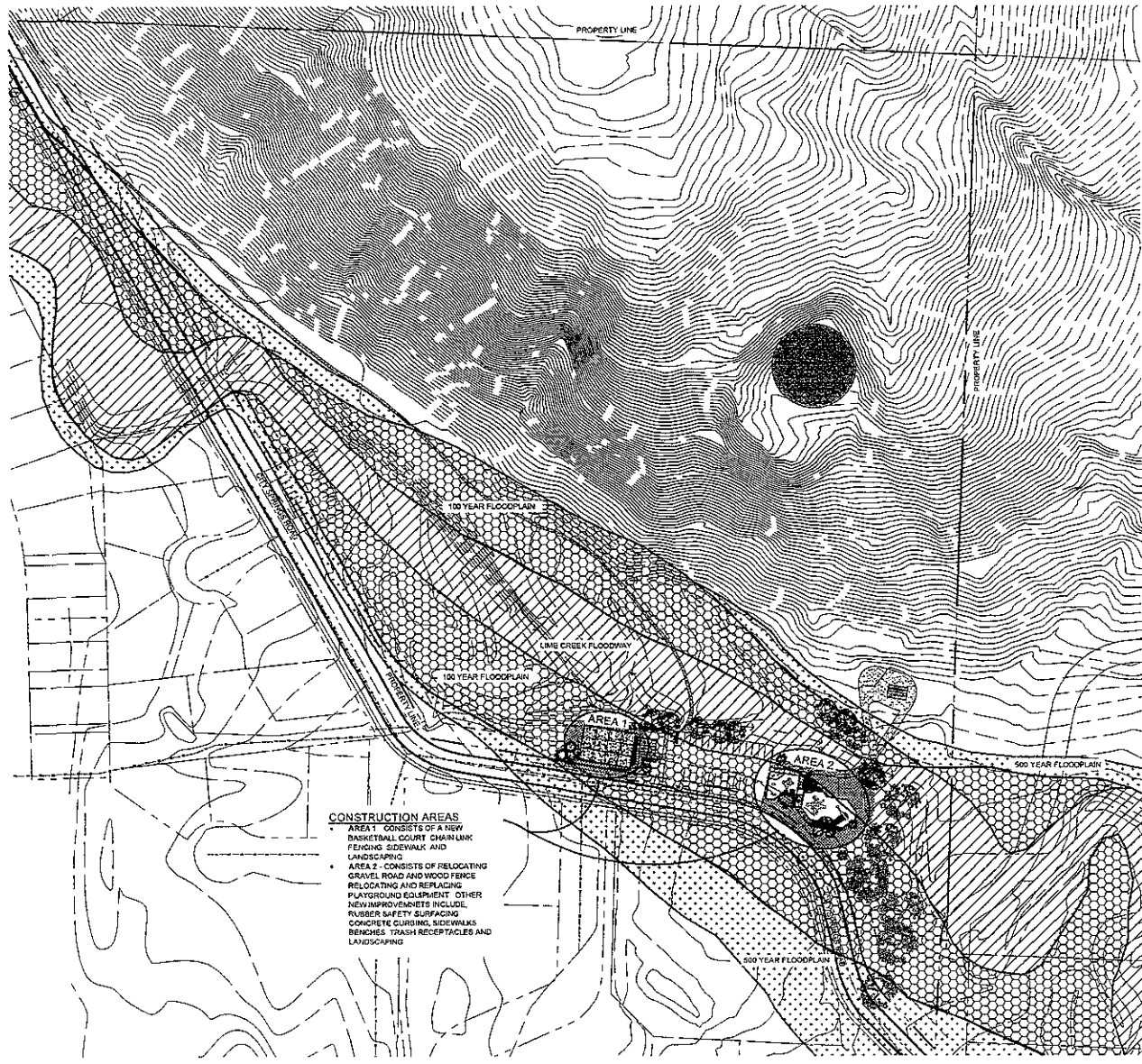


**FLOOD NOTES**  
 1 INFORMATION SHOWN ON THIS MAP WAS OBTAINED FROM THE FLOOD INSURANCE RATE MAP (FIRM) FOR THE CITY OF RAPID CITY SOUTH DAKOTA, PENNINGTON COUNTY COMMUNITY PANEL NUMBER 495420 0003P. THE MAP WAS PROVIDED BY THE FEDERAL EMERGENCY MANAGEMENT AGENCY (FEMA) ON FEBRUARY 16 1996  
 2 BASE FLOOD ELEVATION NEAR PROJECT SITE IS 3433FT  
 3 BASE DRAWING IS COMPILED FROM RAPID CITY GIS DATA AND FIELD SURVEY

LEGEND	
	LIME CREEK FLOODWAY
	100 YEAR FLOODPLAIN
	500 YEAR FLOODPLAIN
	EXISTING CONTOUR LINE
	PROPERTY LINE



**CONSTRUCTION AREAS**

- AREA 1 - CONSISTS OF A NEW BASKETBALL COURT SIDEWALK FENCING SIDEWALK AND LANDSCAPING
- AREA 2 - CONSISTS OF RELOCATING GRAVEL ROAD AND WOOD FENCE RELOCATING AND REPLACING PLAYGROUND EQUIPMENT OTHER NEW IMPROVEMENTS INCLUDE RUBBER SAFETY SURFACING CONCRETE CURBING SIDEWALKS BENCHES TRASH RECEPTACLES AND LANDSCAPING

80 40 0 40 80  
 SCALE 1" = 80'



CITY of RAPID CITY  
 LANDSCAPE ARCHITECTURE  
 PARKS & RECREATION

**PRELIMINARY - NOT FOR CONSTRUCTION**

Wilderness Park  
 Playground Renovation

FLOOD MAP

T1 of 15

Jan 26 2009 9:49am - 0:\landscape\architecture\1\_projects\PR03-6004-Wilderness Park\_Playground\500\_Drawing\500\_Drawing\500\_Drawing\009.dwg\009.dwg Site Plan\_12-17-08.dwg