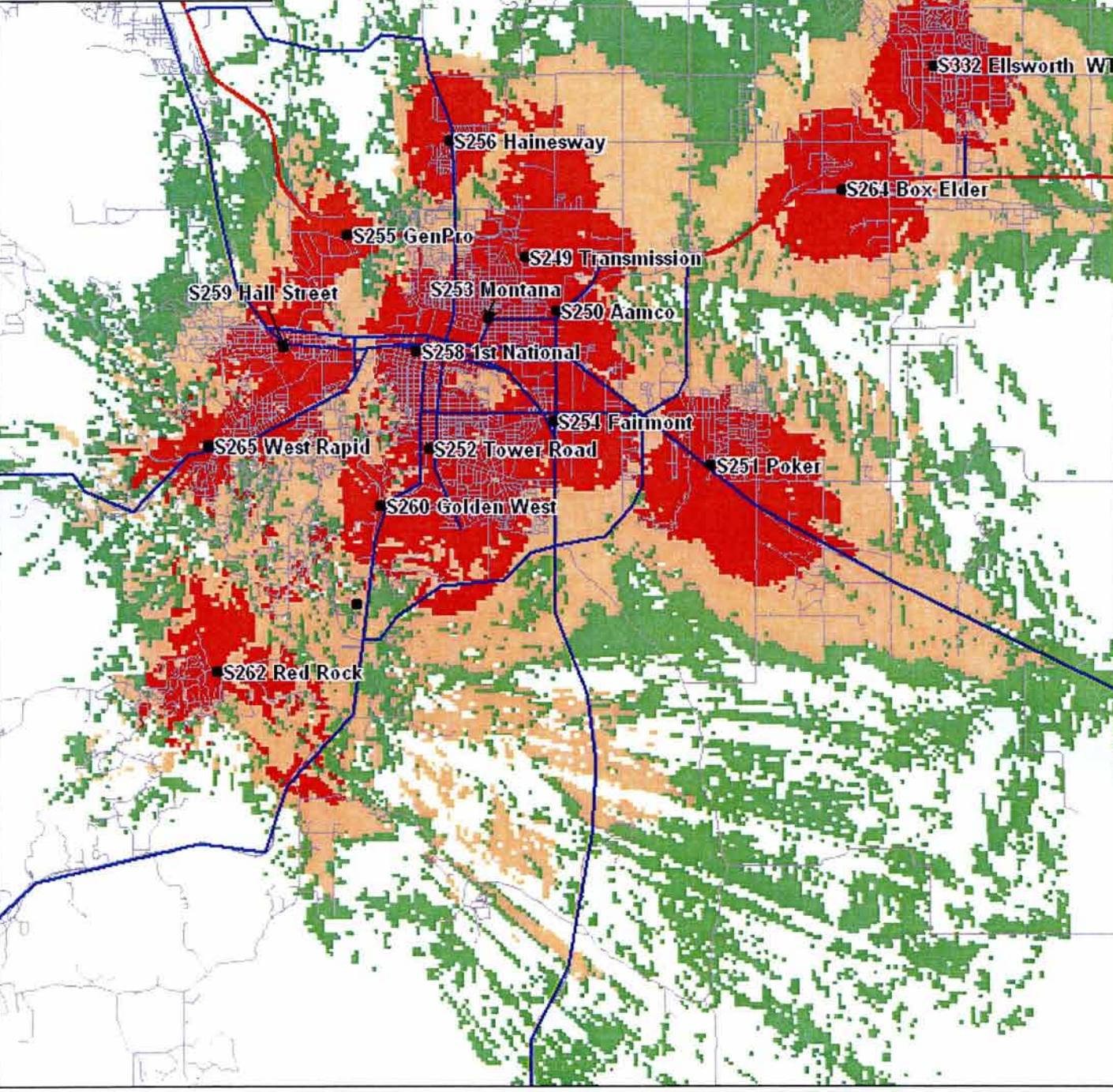


RECEIVED

JAN 23 2009

Rapid City Growth Management Department

-80 Dbm or Better	RELIABLE IN-BUILDING COVERAGE
-89 Dbm or Better	RELIABLE IN-CAR COVERAGE
-96 Dbm or Better	OUTDOOR COVERAGE ONLY



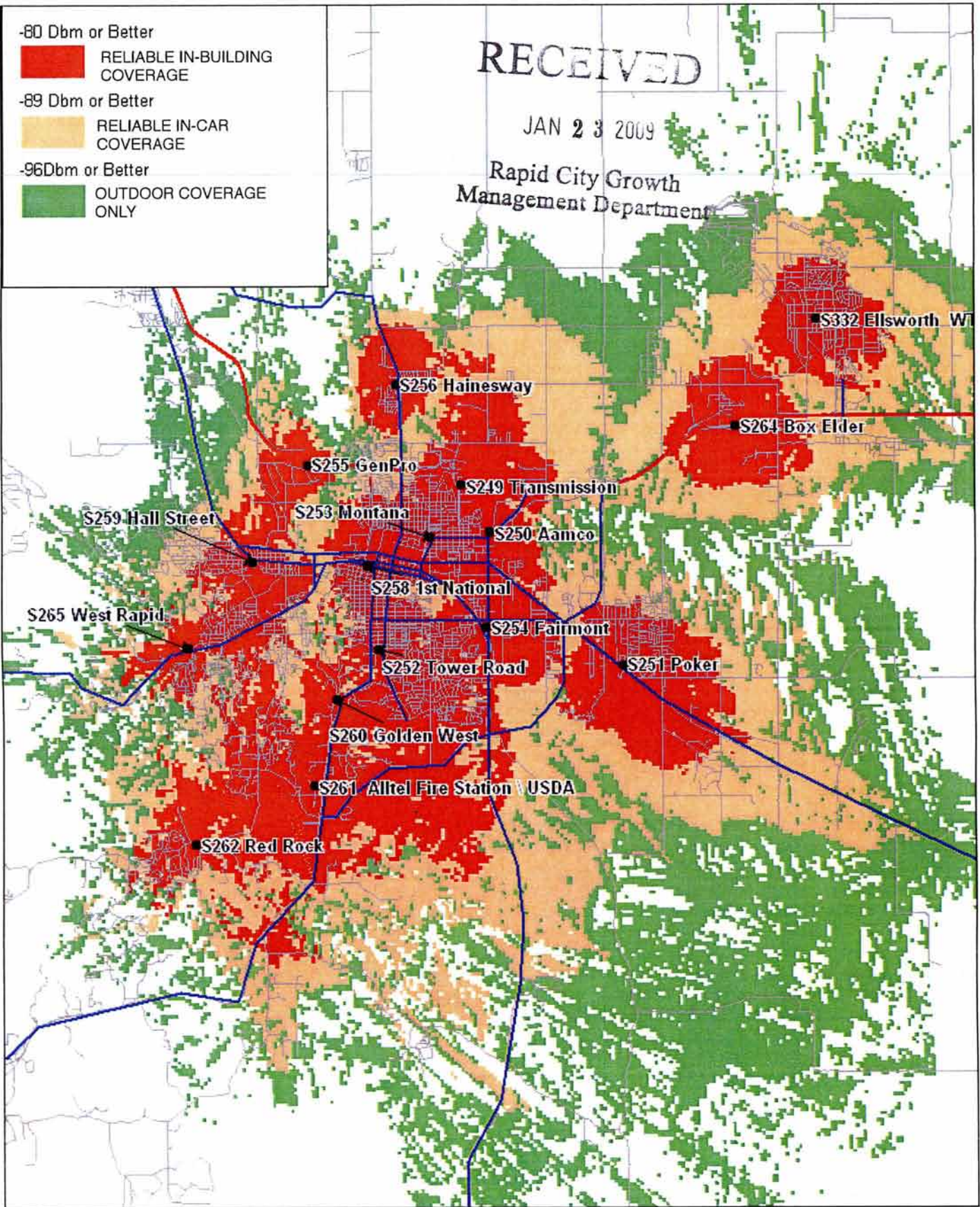
This RF coverage plot is based on an open rural topographical model. Coverage levels are predicted and are not a guarantee of actual or operational coverage.

- 80 Dbm or Better
 RELIABLE IN-BUILDING COVERAGE
- 89 Dbm or Better
 RELIABLE IN-CAR COVERAGE
- 96Dbm or Better
 OUTDOOR COVERAGE ONLY

RECEIVED

JAN 23 2009

Rapid City Growth Management Department



This RF coverage plot is based on an open rural topographical model. Coverage levels are predicted and are not a guarantee of actual or operational coverage.