



# SIGHT LINE STUDY

Rapid City, SD #6565 20 JANUARY 2009



**View 1**  
Dist - 742 ft  
EL - 3290 ft  
Eye - 3295 ft  
(59 ft AFF)



**View 2**  
Dist - 618 ft  
EL - 3270 ft  
Eye - 3275 ft  
(36 ft AFF)



RECEIVED

FEB 06 2009

Rapid City Growth  
Management Department

**FOR AHI REVIEW - CLIENT APPROVED**  
Building height shown for reference only. Actual height may vary.  
NOT FOR CONSTRUCTION





Rapid City, SD #6565 20 JANUARY 2009

# SIGHT LINE STUDY



View 3

Dist - 415 ft  
EL - 3254 ft  
Eye - 3259 ft  
(14 ft AFF)



View 4

Dist - 503 ft  
EL - 3261 ft  
Eye - 3266 ft  
(21 ft AFF)

RECEIVED

FEB 06 2009

Rapid City Growth  
Management Department

FOR AHI REVIEW - CLIENT APPROVED  
This drawing has been reviewed and approved for construction of the project. Actual site conditions may vary from those shown on this drawing.  
NOT FOR CONSTRUCTION

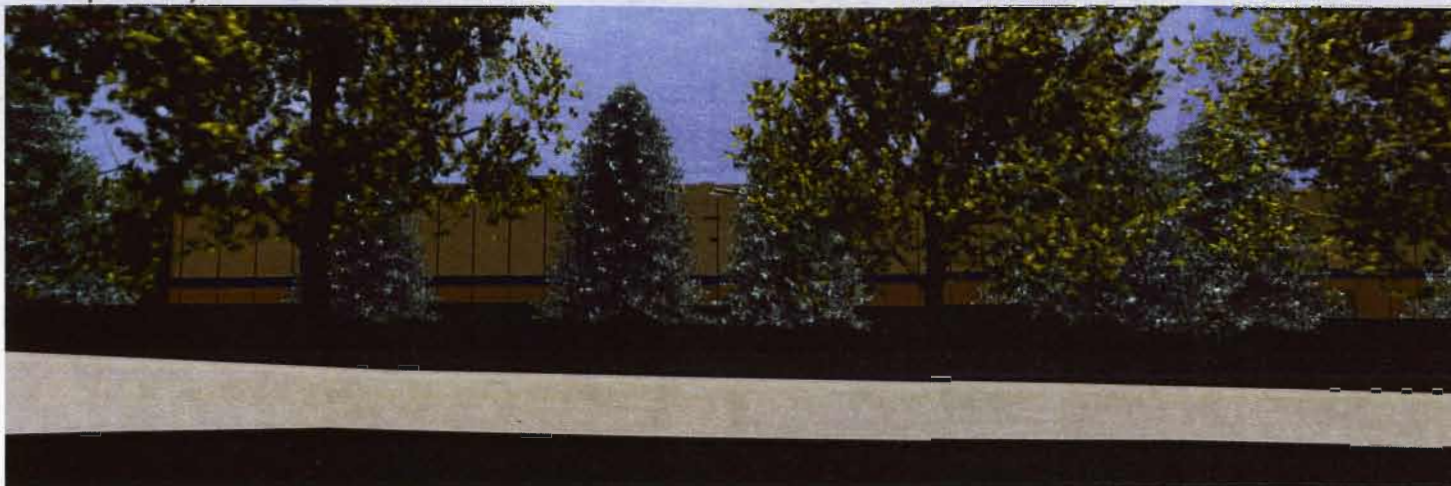






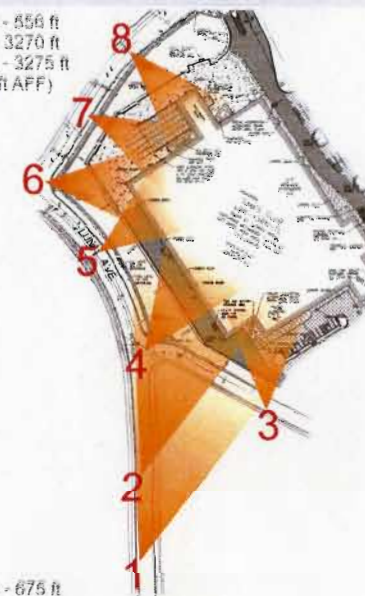
Rapid City, SD #6565 30 JANUARY 2009

### SIGHT LINE STUDY



View 5

Dist - 556 ft  
EL - 3270 ft  
Eye - 3275 ft  
(30 ft AFF)



View 6

Dist - 675 ft  
EL - 3273 ft  
Eye - 3278 ft  
(33 ft AFF)

## RECEIVED

FEB 08 2009

Rapid City Growth  
Management Department

FOR AHJ REVIEW - CLIENT APPROVED  
Building images shown as an illustrative representation  
of the development. Actual building appearance may  
vary from those shown in this graphic rendering.  
NOT FOR CONSTRUCTION







# SIGHT LINE STUDY

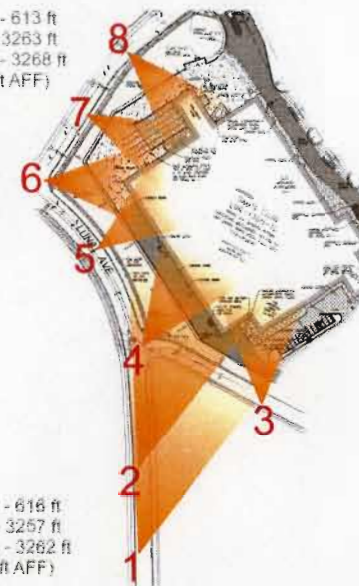


View 7



View 8

Dist - 613 ft  
EL - 3263 ft  
Eye - 3268 ft  
(23 ft AFF)



Dist - 616 ft  
EL - 3267 ft  
Eye - 3262 ft  
(17 ft AFF)

**RECEIVED**  
FEB 09 2009  
Rapid City Growth  
Management Department

**FOR AHJ REVIEW - CLIENT APPROVED**  
Sighting is shown as a guide only. All dimensions and elevations are approximate. Actual field conditions may vary. NOT FOR CONSTRUCTION.

