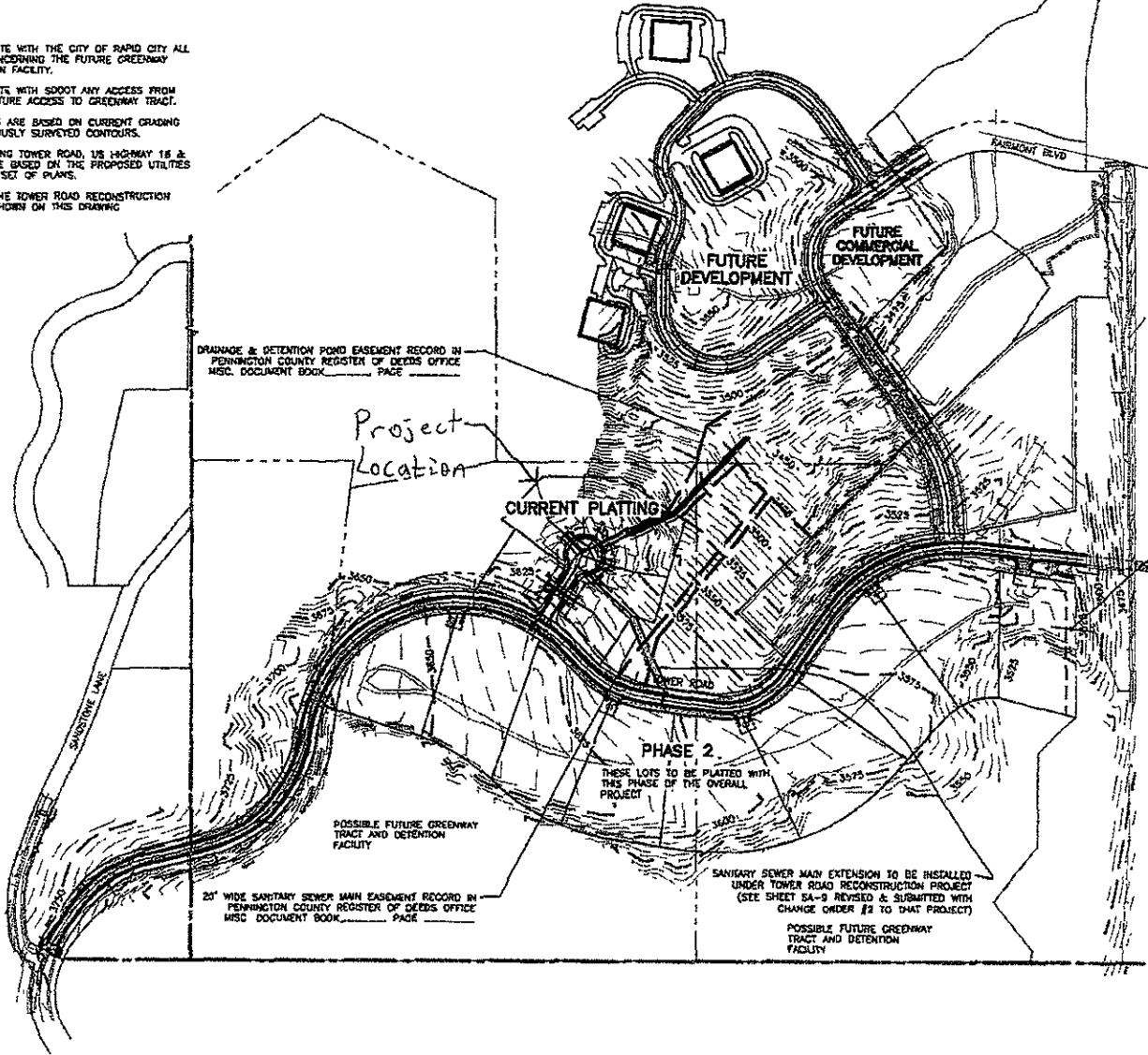


**NOTES**

1. OWNER TO COORDINATE WITH THE CITY OF RAPID CITY ALL FUTURE OPTIONS CONCERNING THE FUTURE GREENWAY TRACT AND DETENTION FACILITY.
2. OWNER TO COORDINATE WITH SDDOT ANY ACCESS FROM HIGHWAY 16 FOR FUTURE ACCESS TO GREENWAY TRACT.
3. CONTOUR ELEVATIONS ARE BASED ON CURRENT GRADING PROJECT AND PREVIOUSLY SURVEYED CONTOURS.
4. UTILITIES SHOWN ALONG TOWER ROAD, US HIGHWAY 16 & SANDSTONE LANE ARE BASED ON THE PROPOSED UTILITIES INCLUDED WITH THIS SET OF PLANS.
5. SITE GRADING FOR THE TOWER ROAD RECONSTRUCTION PROJECT ARE NOT SHOWN ON THIS DRAWING



DRAINAGE & DETENTION POND EASEMENT RECORD IN PENNINGTON COUNTY REGISTER OF DEEDS OFFICE HISC DOCUMENT BOOK \_\_\_\_\_ PAGE \_\_\_\_\_

Project Location

CURRENT PLATTING

PHASE 2

THESE LOTS TO BE PLATTED WITH THIS PHASE OF THE OVERALL PROJECT

20' WIDE SANITARY SEWER MAIN EASEMENT RECORD IN PENNINGTON COUNTY REGISTER OF DEEDS OFFICE HISC DOCUMENT BOOK \_\_\_\_\_ PAGE \_\_\_\_\_

SANITARY SEWER MAIN EXTENSION TO BE INSTALLED UNDER TOWER ROAD RECONSTRUCTION PROJECT (SEE SHEET SA-9 REVISED & SUBMITTED WITH CHANGE ORDER #2 TO THIS PROJECT)

POSSIBLE FUTURE GREENWAY TRACT AND DETENTION FACILITY

CITY OF RAPID CITY  
GROWTH MANAGEMENT DEPT.  
DEVELOPMENT SERVICES

Plans are provided for general information with appropriate governmental regulations, specifications, custom criteria and engineering standards. The City of Rapid City does not certify the liability, accuracy or completeness of the plans or designs which are the responsibility of the engineer of record. All necessary permits shall be obtained prior to construction of the proposed public improvements.

Engineering Reviewer: \_\_\_\_\_ Date: \_\_\_\_\_  
Comments: \_\_\_\_\_



NOT TO SCALE

Professional Seal  
1617  
NIELSEN & SECRESTARY  
REGISTERED PROFESSIONAL ENGINEER  
STATE OF SOUTH DAKOTA

**TOWER COURT  
TOWER RD RECONSTRUCTION PROJECT**

RAPID CITY, SOUTH DAKOTA

JOB NUMBER: 07-1373.001  
DATE: 08/28/08

REVISIONS

NO.	DESCRIPTION

TITLE  
**MASTER PLAN**

SHEET  
**C1.05**

Copyright 2008. All rights reserved. No part of this document may be reproduced in any form or by any means without permission from Fourfront Design, Inc.

517 7th Street, Rapid City, SD 57701  
ph: 605.942.9470 fax: 605.942.2077  
www.fourfrontinc.com  
ARCHITECTURE & ENGINEERING  
GIS SURVEYING

**FOURFRONT  
DESIGN INC**