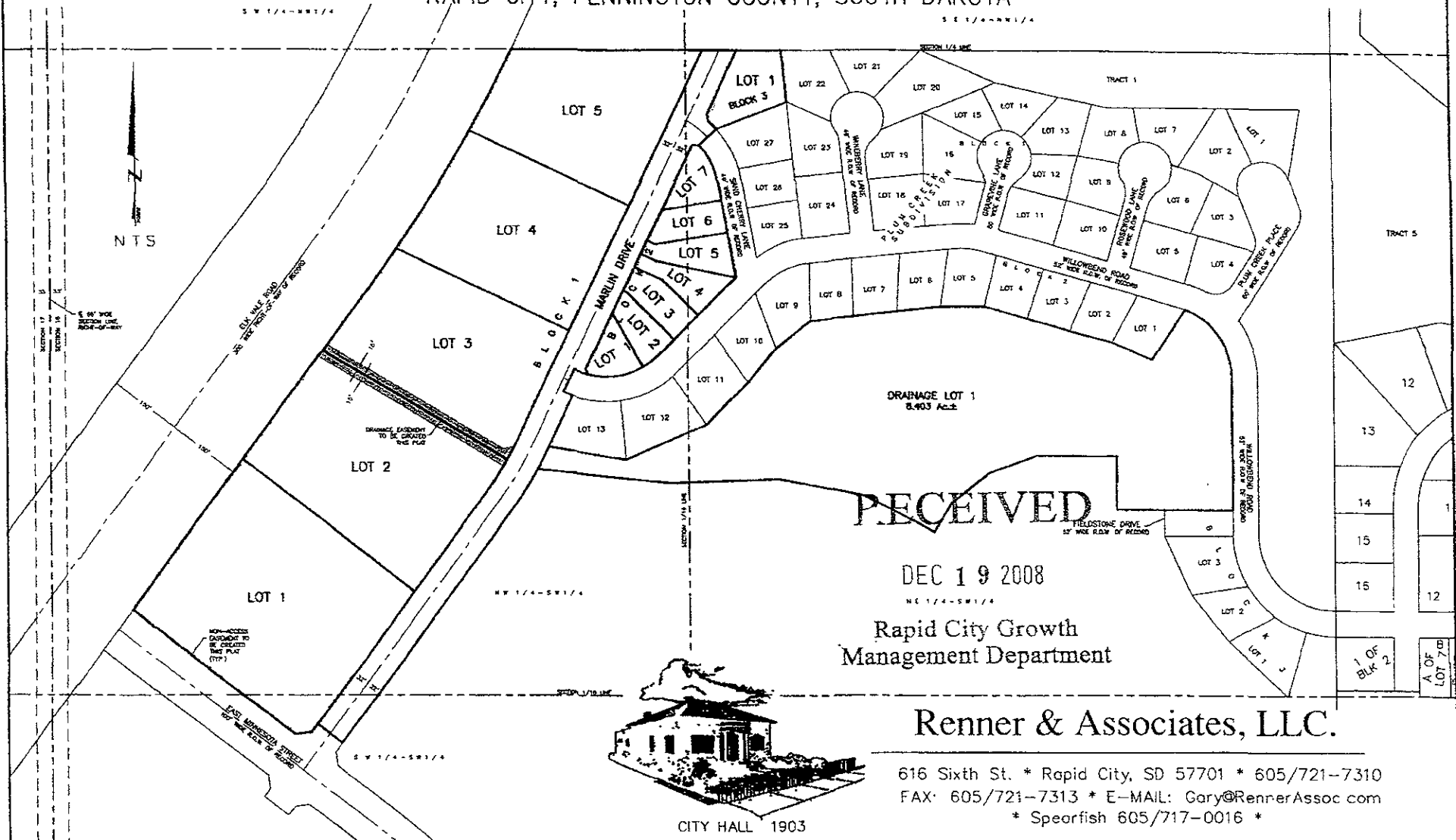


PLAT OF LOTS 1-5 OF BLOCK 1, LOTS 1-7 OF BLOCK 2, LOT 1 OF BLOCK 3, DRAINAGE LOT 1, & MARLIN DRIVE RIGHT-OF-WAY, ELKS CROSSING

(formerly a portion of the N1/2 of the SW1/4
and a portion of the SW1/4 of the SW1/4)
SECTION 16, T1N, R8E, B1M
RAPID CITY, PENNINGTON COUNTY, SOUTH DAKOTA



RECEIVED

DEC 19 2008

Rapid City Growth
Management Department

Renner & Associates, LLC.

616 Sixth St. * Rapid City, SD 57701 * 605/721-7310
FAX: 605/721-7313 * E-MAIL: Gary@RennerAssoc.com
* Spearfish 605/717-0016 *



CITY HALL 1903