



*The Golden West building, site of an existing 80' monopole,
at the intersection of North Plaza Road and Rand Road.*

JAN 08 2009

RECEIVED



View looking north-northeast at the Golden West monopole and building.

JAN 07 2009

RECEIVED



View looking southeast at the Golden West monopole and building.

JAN 0 9 2009

RECEIVED



Looking up at the southwest face of the existing monopole. Please note the small 3' point-to-point dish at the top.

RECEIVED

JAN 03 2009

Rapid City
Management



View looking up at the south face of the Golden West monopole.

RECEIVED
JAN 07 2003
Rapid City Growth
Management Department

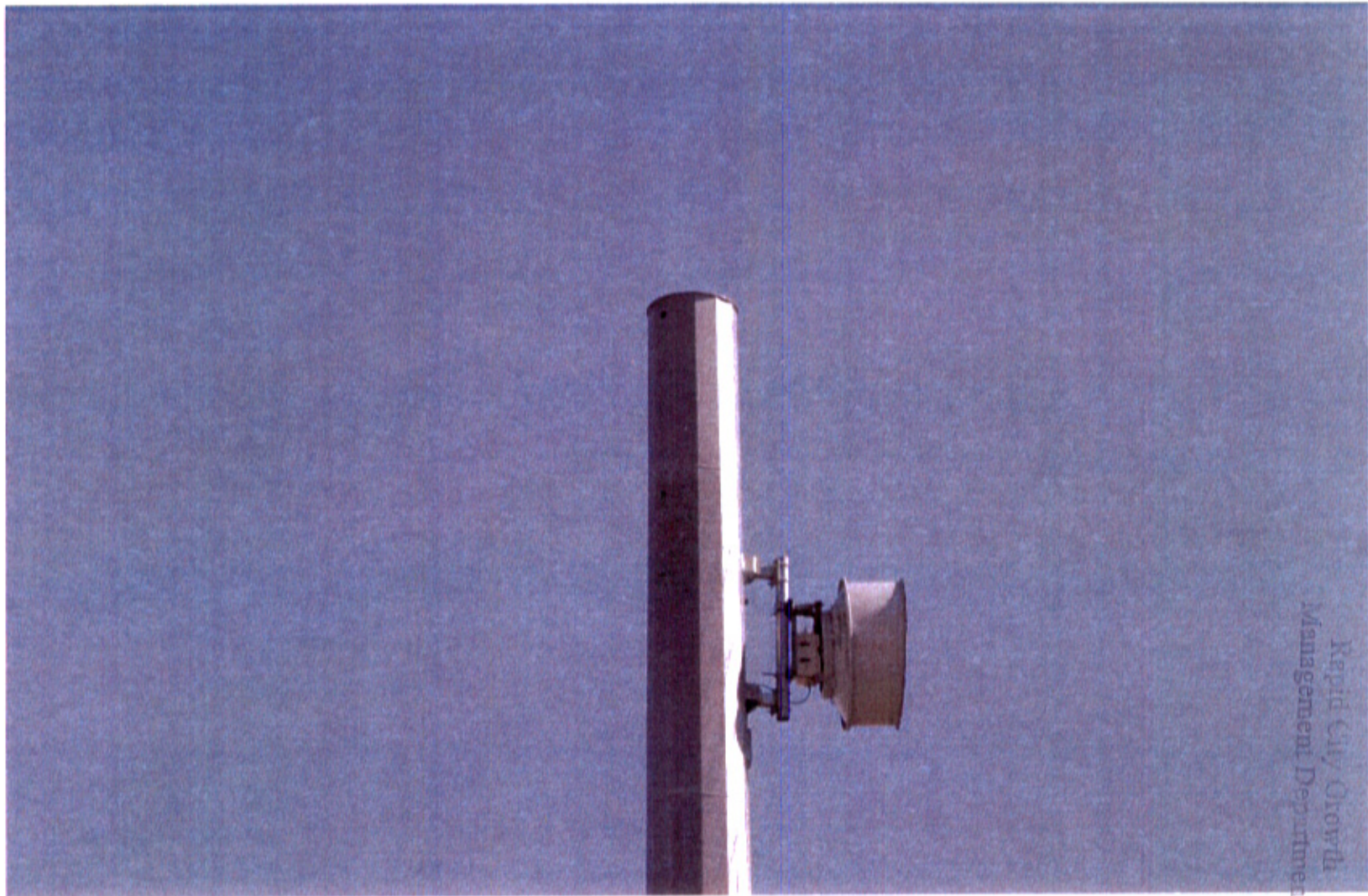


View looking east to 120' monopole.

RECEIVED

JAN 28 2009

Rapid City Growth
Management Department



There appears to be a flange on top of this relatively new monopole, which would lead me to believe that another section could be attached to the top, thus allowing for a higher elevation for our proposed antennas.

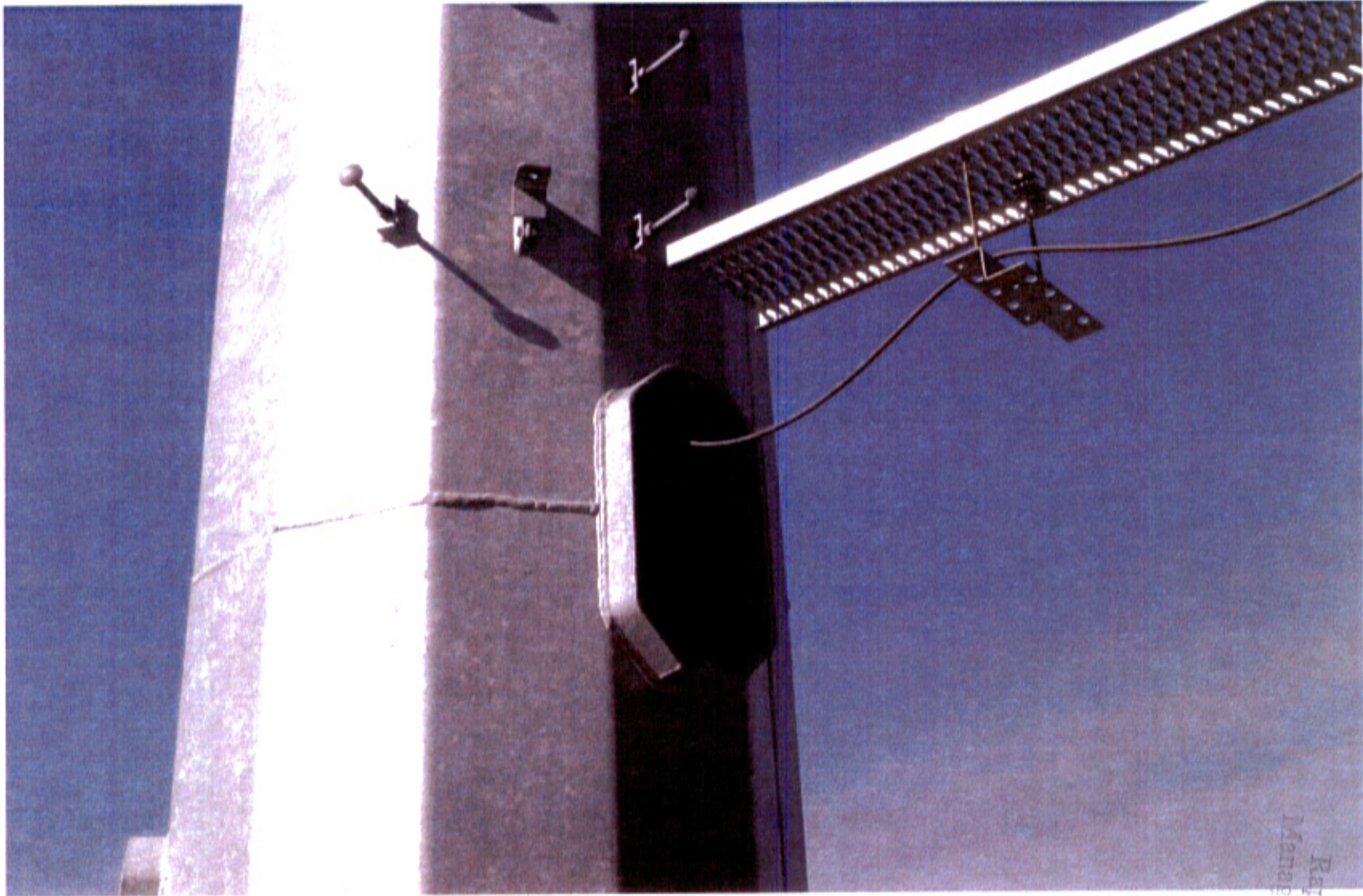


Available exit port on the east face of the monopole.

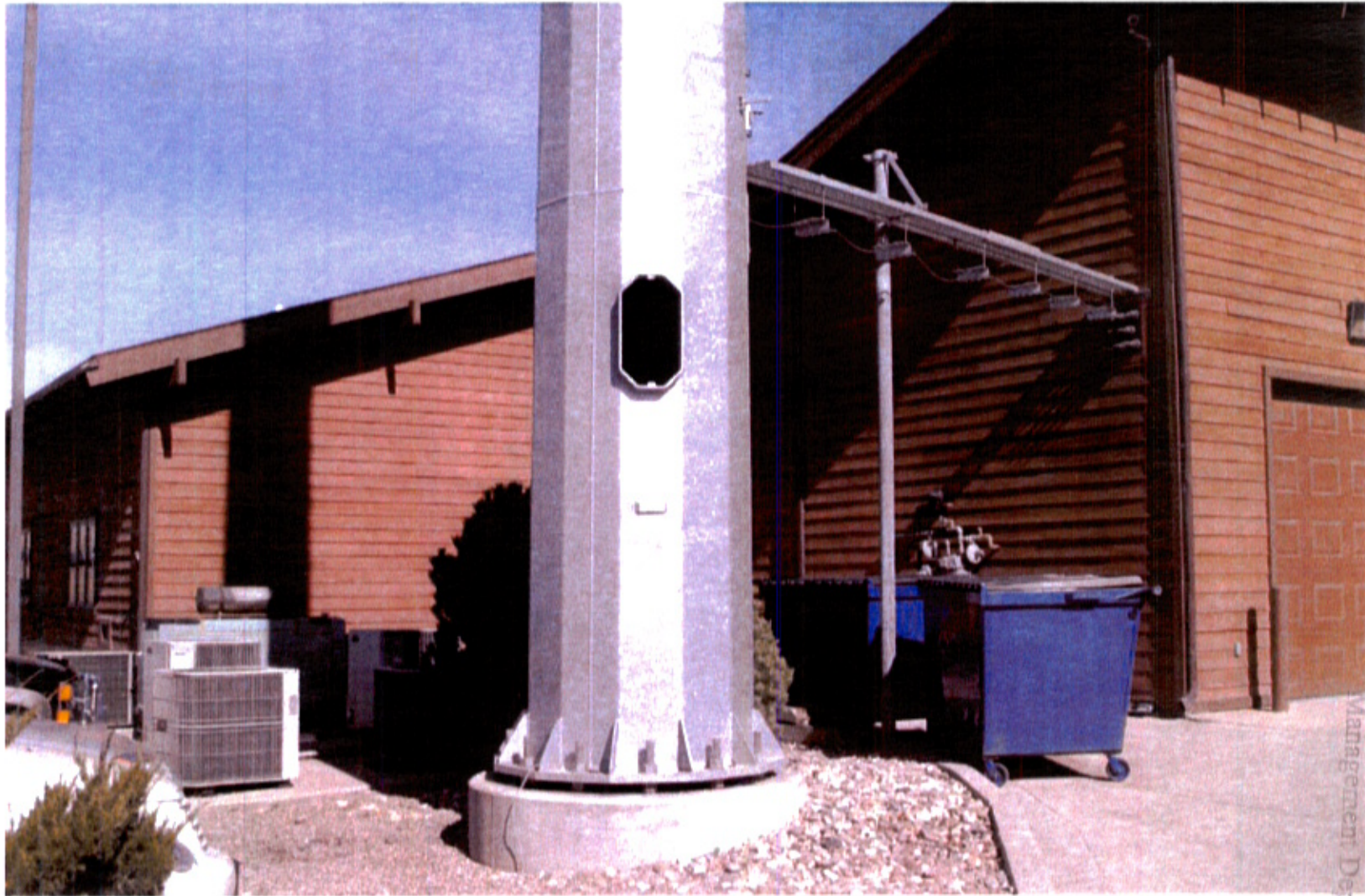
Rapid City Growth
and Development

JAN 05 2009

RECEIVED



Existing exit port on the east face of the monopole, approximately 10' above ground.



Existing exit port on the southwest face and a view of the area around the base of the monopole.

RECEIVED

JAN 04 2013

Rapid City Growth
Management Department



Existing entry port on the side of the Golden West building. This would indicate to me that there is probably space inside the building for our radio equipment.



If radio equipment needs to be located outside, this location on the west side of the building might be just large enough to hold our equipment. However, please note the air conditioning lines running under that area.



A view of the generator and many air conditioning units near the base of the monopole.

RECEIVED
JAN 05 2009
City Growth
Management Department



View looking north from the property.

JAN 08 2009

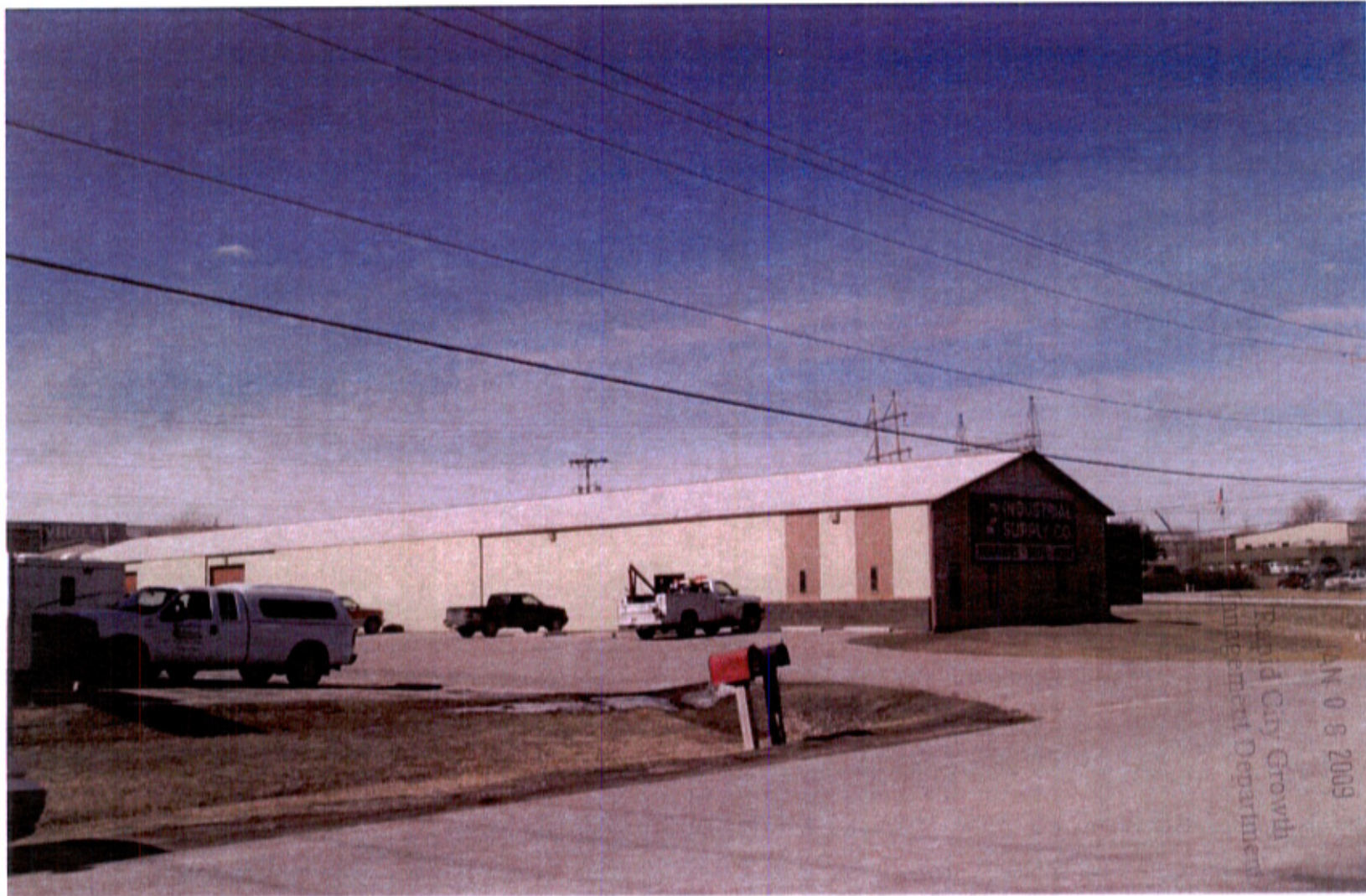
RECEIVED



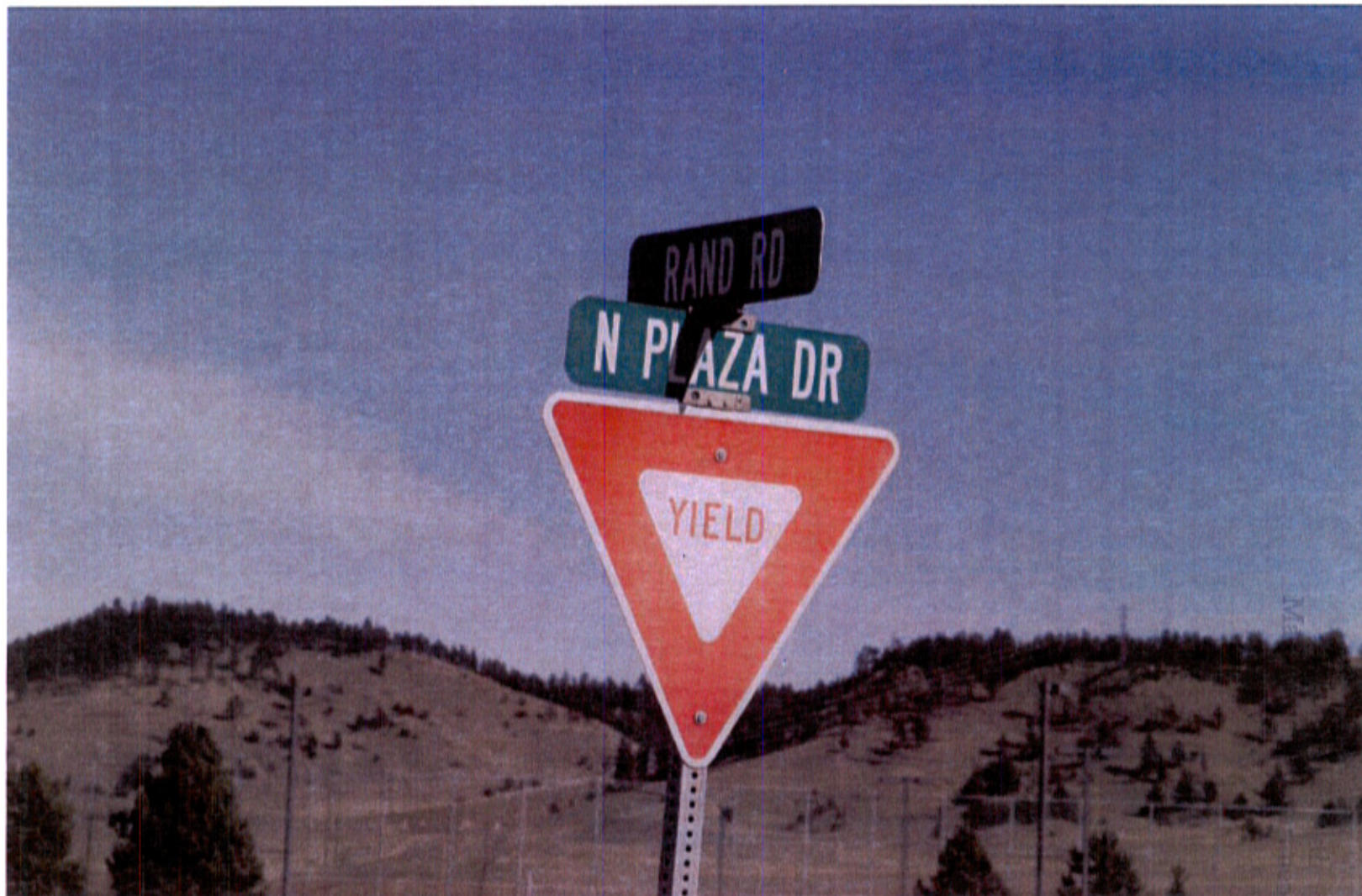
View looking south from the property.



View looking west from the property.



View looking northwest from the property.



JAN 08 2009

PERCEIVED

A street sign at the nearest intersection to the property.



RECEIVED
JAN 08 2009

A telco pedestal on the southwest corner of the property.

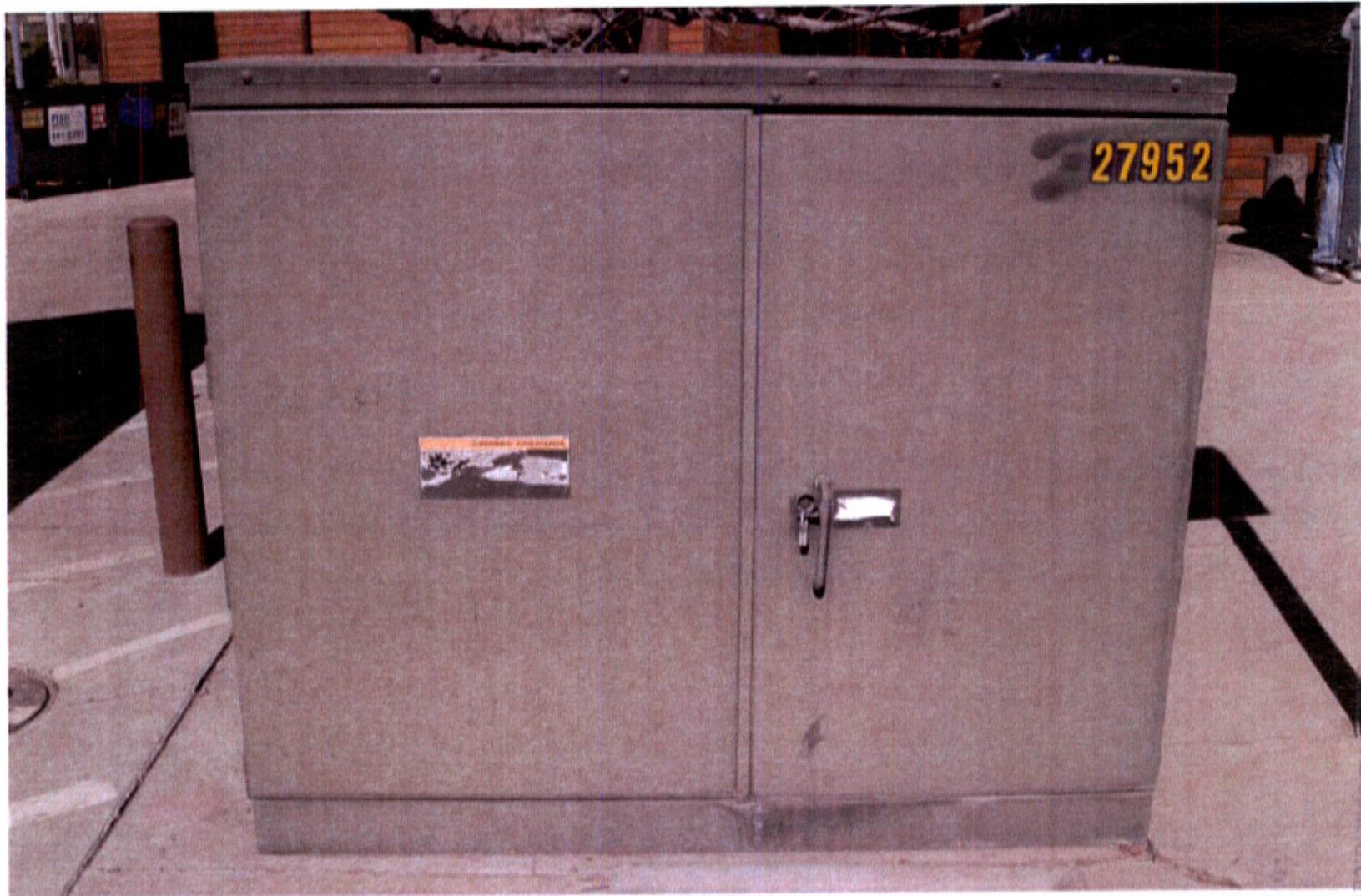


A telco or fiber pedestal located on the south side of the property.

RECEIVED

JAN 07 2009

Rapid City
Management District



The electrical transformer located on the south side of the property.

RECEIVED
JAN 0 1 2009
Rapid City Growth
Management Department



Mailboxes on the other side of Rand Street, across from the Golden West property.

JAN 0 8 2009

RECEIVED