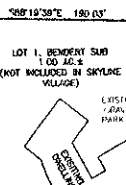
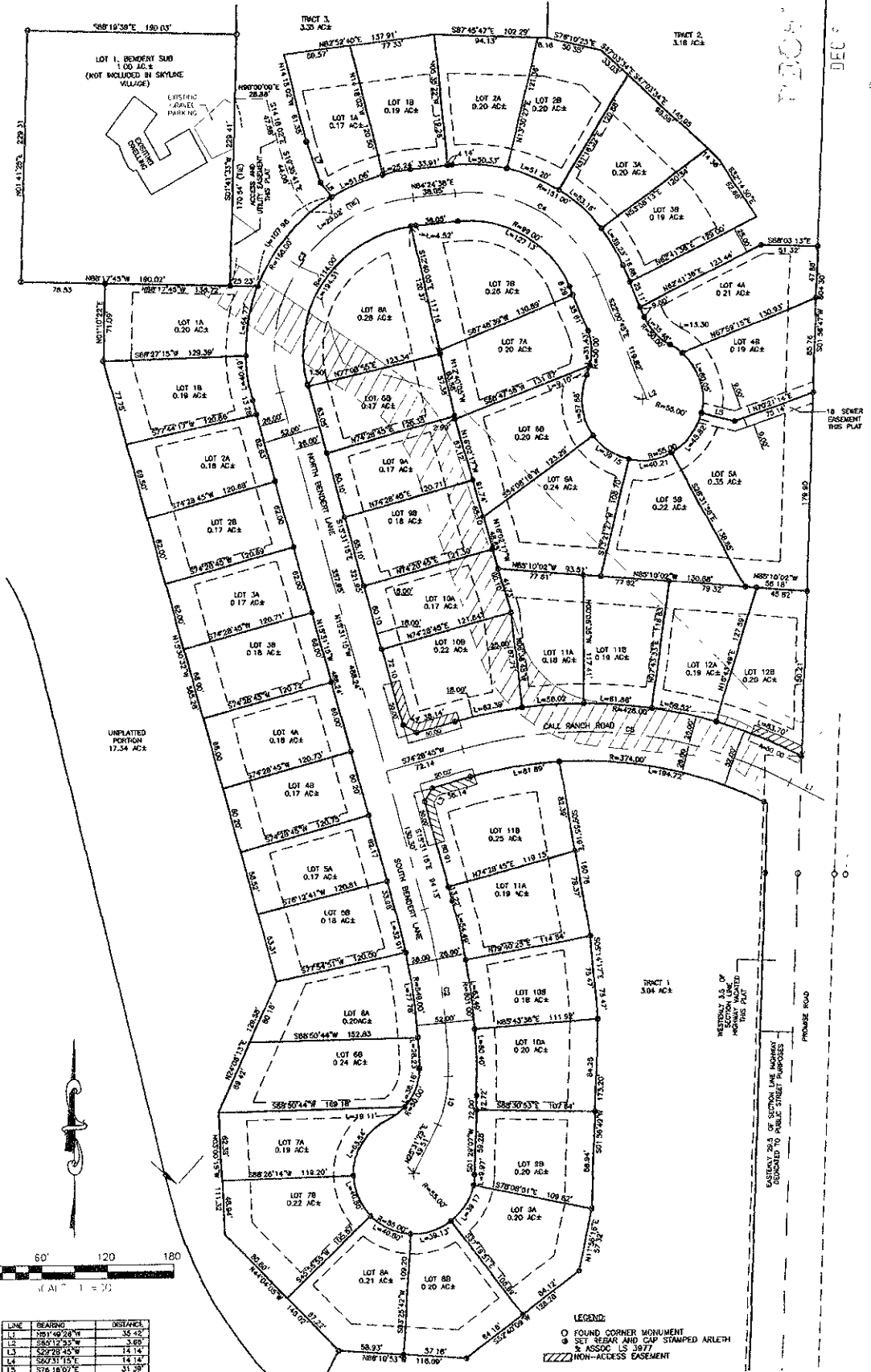


TRACTS 1, 2, 3, LOTS 1A THRU 12B OF BLOCK 1 AND LOTS 1A THRU 11B OF BLOCK 2, ACCESS AND UTILITY EASEMENT, SEWER EASEMENT, NON-ACCESS EASEMENTS,

CANYON PINES SUBDIVISION.

LOT 1 AND DEDICATED RIGHTS-OF-WAY FORMERLY A PART OF THE SOUTH 49S OF NE 1/4SE 1/4 LESS 1 LOT 1 AND UNPLATTED PORTION OF SE 1/4SE 1/4 ALL LOCATED IN THE SE 1/4SE 1/4 AND NE 1/4SE 1/4 OF SECTION 22 T 1N R 7E B 1M RAPID CITY PENNINGTON COUNTY SOUTH DAKOTA

DEC 23 2008

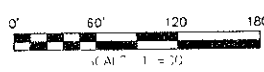


UNPLATTED PORTION 17.34 AC±

SEWER EASEMENT SEE PLAT

WESTERLY 1/2 OF SECTION LINE ADJACENT TO THIS PLAT

EASTERLY 25% OF SECTION LINE HIGHWAY DONATED TO PUBLIC STREET PURPOSES



LINE	BEARING	DISTANCE
L1	N81°40'28"W	35.42
L2	S89°12'32"W	3.89
L3	S87°28'45"W	14.14
L4	S67°31'17"E	14.14
L5	S76°18'07"E	31.39
L6	N33°14'38"W	16.64
L7	N19°35'41"W	39.24

- FOUND CORNER MONUMENT
- ⊙ SET SEAR AND CAP STAMPED ARLETH
- ⊙ ASSOC LS 08/17
- ▨▨▨ NON-ACCESS EASEMENT

CURVE	BEARINGS	ARC LENGTH	CHORD LENGTH	CHORD BEARING	DELTA ANGLE
C1	100.00	44.92	44.88	S12°29'13"W	25°44'24"
C2	375.00	153.59	153.37	S27°22'07"W	15°18'18"
C3	140.00	244.10	214.38	S34°26'42"E	82°55'55"
C4	125.00	180.42	149.72	S58°40'03"E	73°34'57"
C5	400.00	305.08	297.72	S93°40'20"E	43°41'49"



ARLETH & ASSOCIATES
 25 KIRK ROAD
 DEADWOOD, SD 57732
 605-578-1637

PROJECT: SKYLINE VILLAGE
 JOB NO 8058

DATE: DECEMBER 23, 2008
 SCALE: NOTED
 DRAWN BY: SE/ED
 APPROVED: JMA
 DRAWING: 4052-PRELIM.dwg