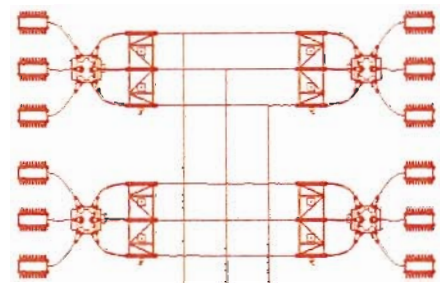


- NOTES:**
1. THE 69KV MAIN AND TRANSFER BUS SHALL BE 4" SPS, 6063-T6 ALUMINUM ALLOY.
 2. ALL OTHER 69KV AND 230KV BUS SHALL BE 3 1/2" SPS, 6063-T6 ALUMINUM ALLOY.

LEGEND
 E - EXPANSION FITTING
 F - FIXED FITTING



ES&C ELECTRICAL SYSTEMS CONSULTANTS
 ELECTRICAL CONSULTING ENGINEERS
 FORT COLLINS COLORADO (970) 224-9100

DATE	BY	NO.	REVISION DESCRIPTION
8/4/85	CEI	3	D.P. DRAWING REVISED
8/27/85	VB	2	UPDATE
9/27/85	VB	1	JNB ADD NOTES, MISC. REVISIONS
9/18/85	VB	0	JNB ORIGINAL ISSUE

BLACK HILLS POWER
 SOUTH RAPID CITY SUBSTATION
GENERAL ARRANGEMENT

DATE: 3/18/85
 SHEET: 3 OF 3
SRC-E-010