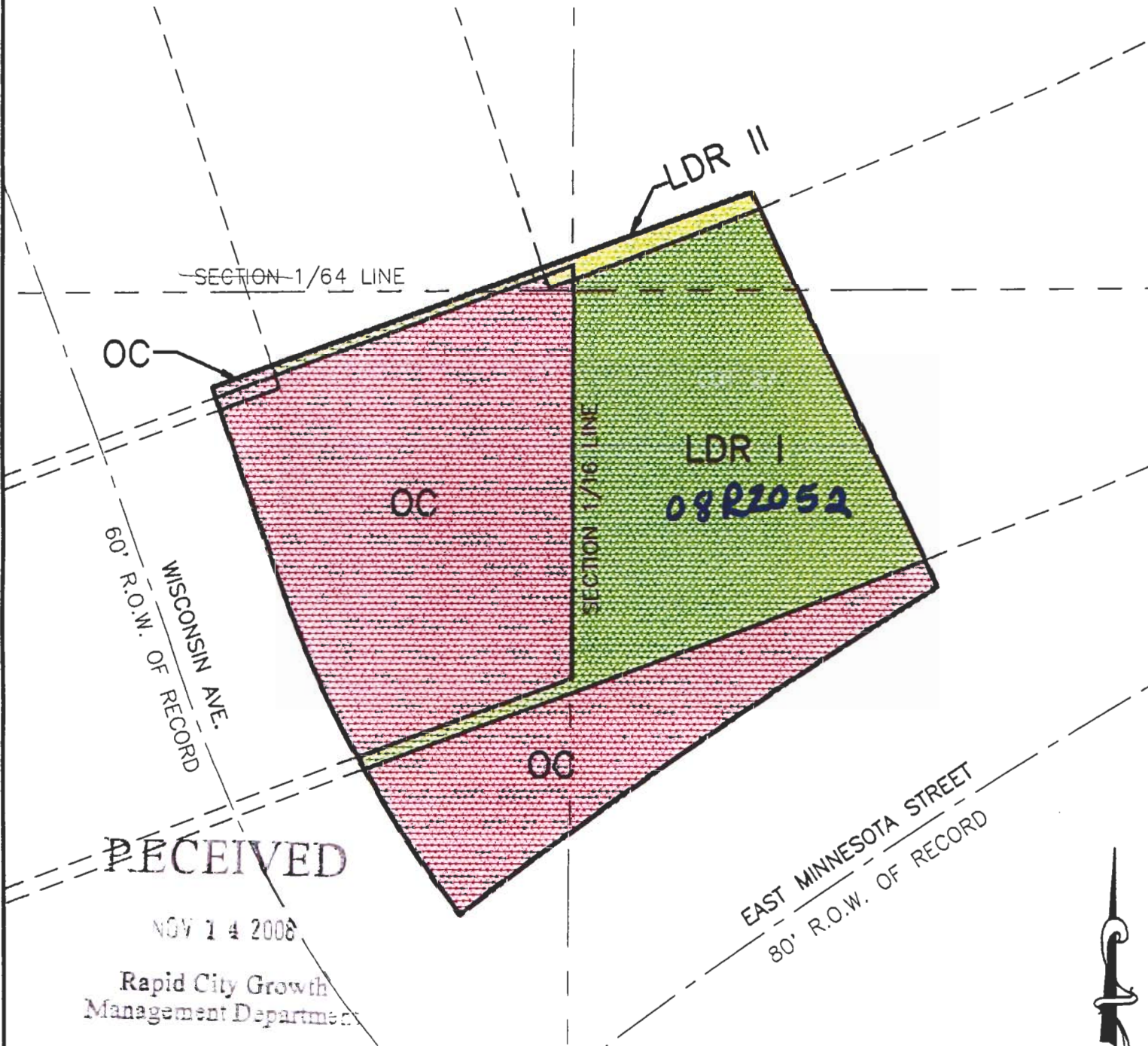





EXHIBIT "A"

# OFFICE COMMERCIAL AND LOW DENSITY RESIDENTIAL I & II

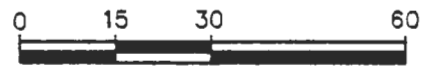
LOT 27 OF BLOCK 23 OF ROBBINSDALE ADDION NO.10  
LOCATED IN THE NW1/4 OF THE SE1/4, THE E1/2 OF THE NW1/4 OF THE SE1/4,  
AND IN THE SW1/4 OF THE NE1/4 OF THE SE1/4,  
ALL IN SECTION 13, T1N, R7E, B.H.M.,  
RAPID CITY, PENNINGTON COUNTY, SOUTH DAKOTA



RECEIVED  
NOV 14 2008  
Rapid City Growth  
Management Department

-  OFFICE COMMERCIAL
-  LDR I
-  LDR II

NOVEMBER 10, 2008



SCALE: 1" = 30'

