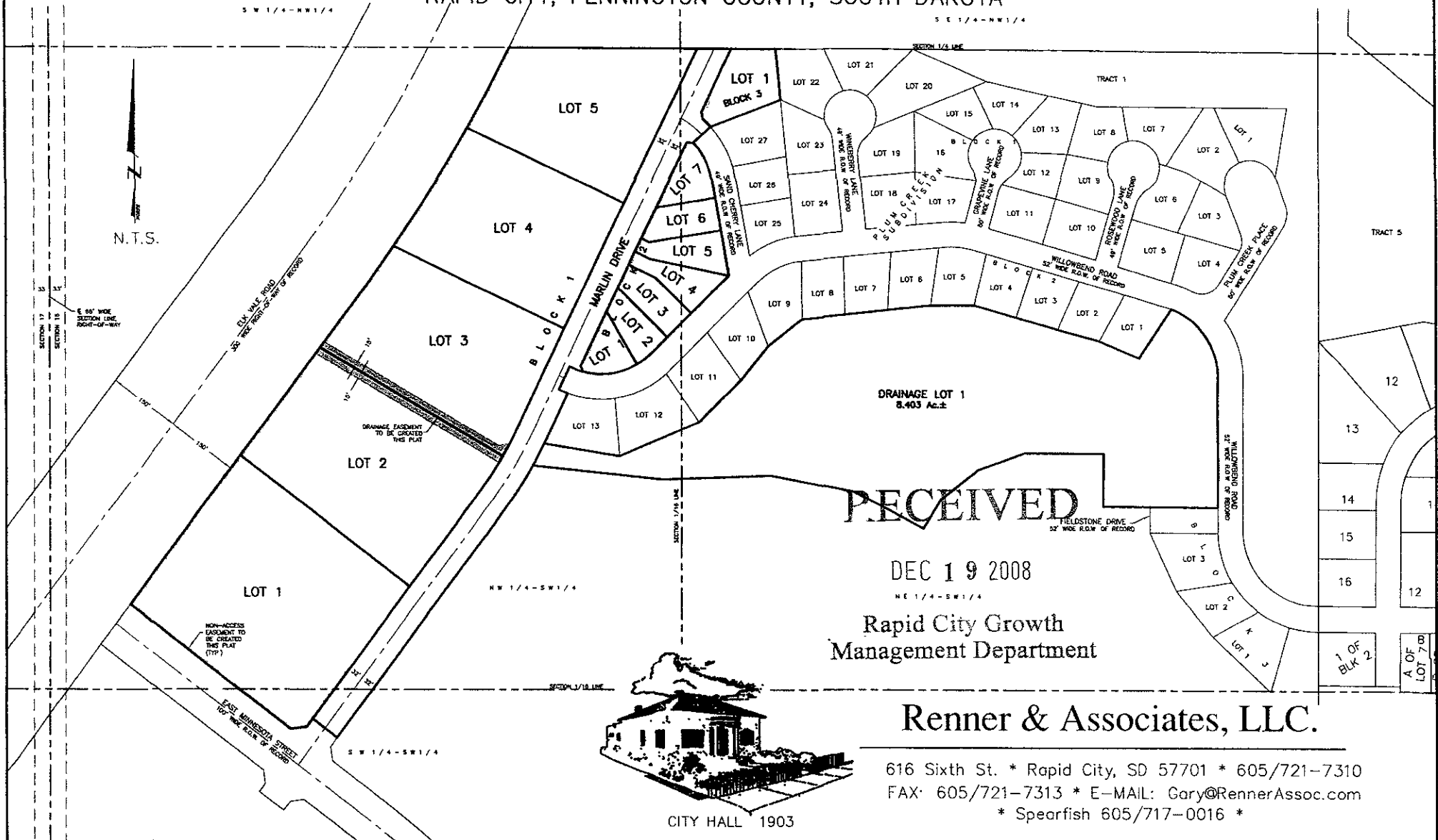


# PLAT OF LOTS 1-5 OF BLOCK 1, LOTS 1-7 OF BLOCK 2, LOT 1 OF BLOCK 3, DRAINAGE LOT 1, & MARLIN DRIVE RIGHT-OF-WAY, ELKS CROSSING

(formerly a portion of the N1/2 of the SW1/4  
and a portion of the SW1/4 of the SW1/4)  
SECTION 16, T1N, R8E, BHM  
RAPID CITY, PENNINGTON COUNTY, SOUTH DAKOTA



**RECEIVED**

DEC 19 2008

Rapid City Growth  
Management Department

**Renner & Associates, LLC.**

616 Sixth St. \* Rapid City, SD 57701 \* 605/721-7310  
FAX: 605/721-7313 \* E-MAIL: Gary@RennerAssoc.com  
\* Spearfish 605/717-0016 \*



CITY HALL 1903