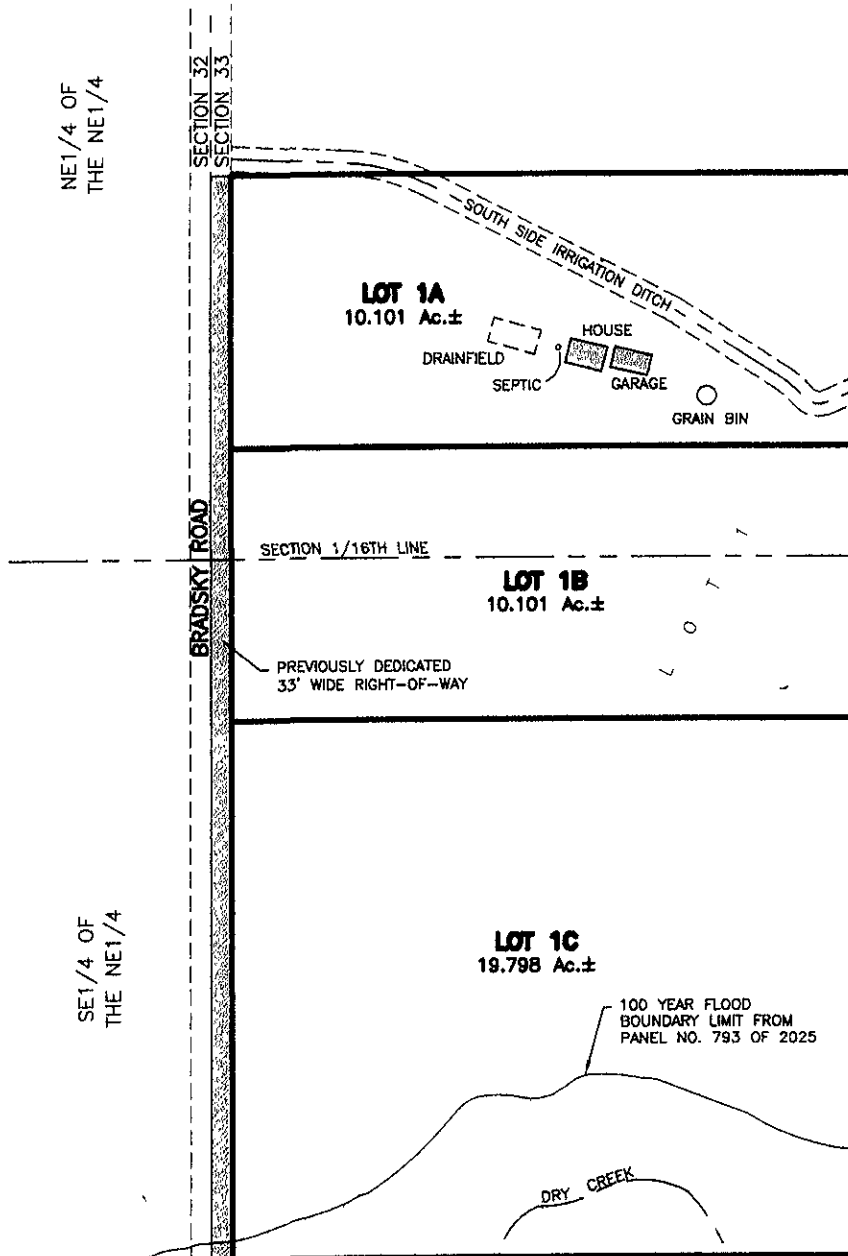


# LAYOUT PLAT OF LOTS 1A & 1B, JUNDT SUBDIVISION

(formerly Lot 1 of Jundt Subdivision)  
LOCATED IN THE W1/2 OF THE NW1/4,  
SECTION 33, T1N, R9E, BHM,  
PENNINGTON COUNTY, SOUTH DAKOTA



DECEMBER 2, 2008  
NOT TO SCALE

E 40' WIDE EASEMENT FOR  
OPERATION AND MAINTENANCE  
OF SOUTH SIDE IRRIGATION DITCH  
AS SHOWN IN PLAT BOOK 21, PAGE 225  
  
PERMISSION IS REQUIRED FROM SOUTH SIDE  
DITCH COMPANY FOR IMPROVEMENTS WITHIN  
40' WIDE IRRIGATION DITCH EASEMENT

**RECEIVED**  
DEC 03 2008  
Rapid City Growth  
Management Department

## Renner & Associates, LLC.

616 Sixth St. \* Rapid City, SD 57701 \* 605/721-7310  
FAX: 605/721-7313 \* E-MAIL: Gary@RennerAssoc.com



CITY HALL 1903