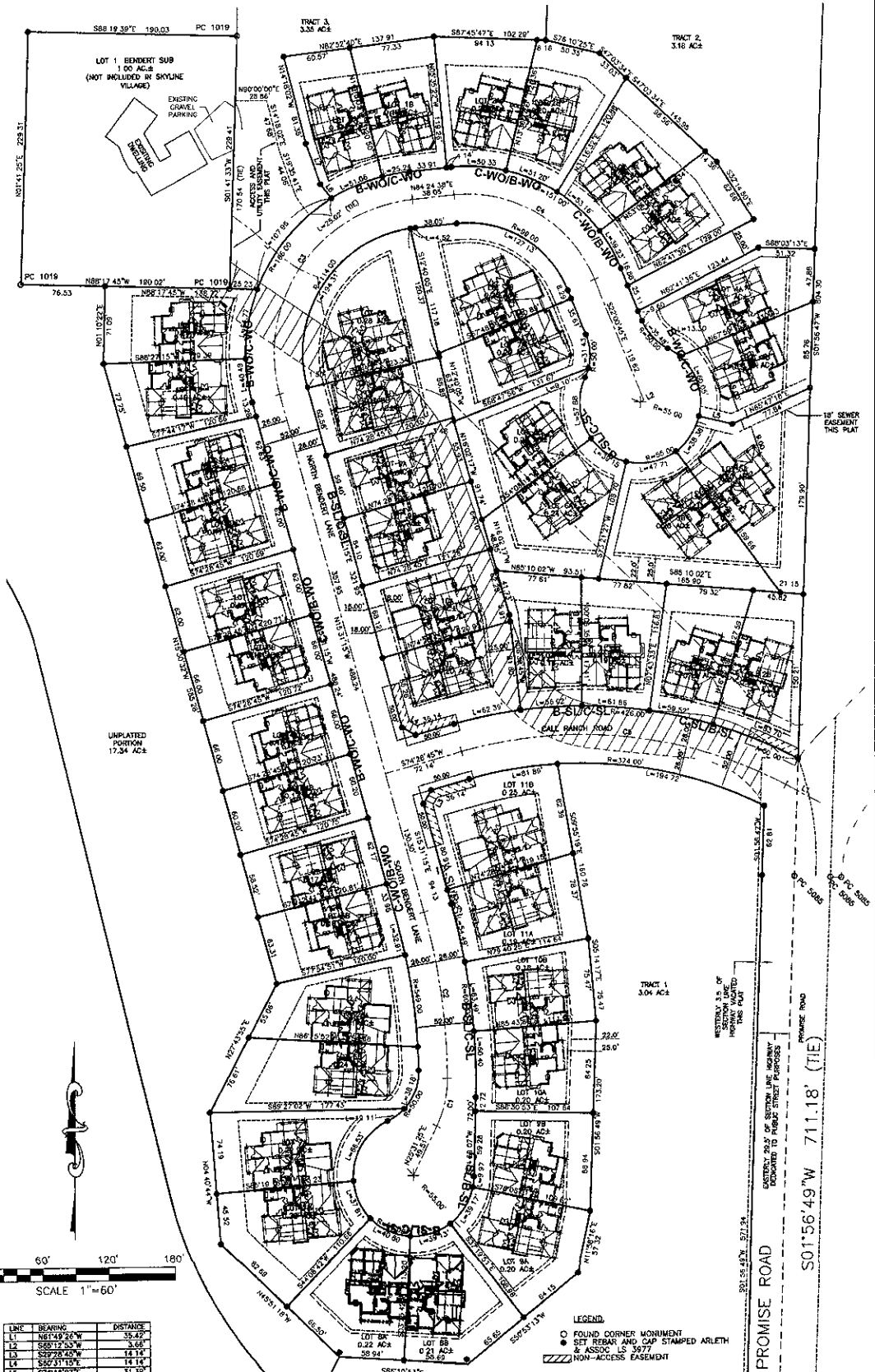


TRACTS 1, 2, 3, LOTS 1A THRU 12B OF BLOCK 1 AND LOTS 1A THRU 11B OF BLOCK 2, ACCESS AND UTILITY EASEMENT, SEWER EASEMENT, NON-ACCESS EASEMENTS,

AND
CANYON PINES SUBDIVISION,

LOT 1 AND DEDICATED RIGHTS-OF-WAY,
FORMERLY A PART OF THE SOUTH 49S OF NE1/4SE1/4 LESS LOT 1 AND UNPLATTED PORTION OF SE1/4SE1/4
ALL LOCATED IN THE SE1/4SE1/4 AND NE1/4SE1/4 OF SECTION 22, T 1 N, R 7 E, B H M,
RAPID CITY, PENNINGTON COUNTY, SOUTH DAKOTA



LINE	BEARING	DISTANCE
L1	N85°49'26" W	35.42
L2	S89°17'53" W	3.66
L3	S89°28'40" W	16.14
L4	S52°31'10" E	14.14
L5	S76°18'07" E	31.39
L6	N36°14'53" W	11.64
L7	N19°35'41" W	39.22

CURVE	RADIUS	ARC LENGTH	CHORD LENGTH	CHORD BEARING	DELTA ANGLE
C1	120.00'	44.82'	51.22'	S12°59'13" W	29°44'21"
C2	575.00'	132.56'	153.13'	S29°22'07" E	18°18'18"
C3	140.00'	244.18'	214.36'	N34°30'42" E	95°55'53"
C4	125.00'	182.82'	149.72'	S28°46'03" E	72°54'33"
C5	420.00'	305.00'	267.72'	S83°40'20" E	43°41'49"

LEGEND
 ○ FOUND CORNER MONUMENT
 ○ SET REBAR AND CAP STAMPED ARLETH & ASSOC. LS 3677
 ▨▨▨▨ NON-ACCESS EASEMENT

REV: JANUARY 12, 2009



ARLETH & ASSOCIATES
 25 KIRK ROAD
 DEADWOOD, SD 57732
 605-578-1837

PROJECT: SKYLINE VILLAGE
 JOB NO. 8056

DATE: DECEMBER 23, 2008
 SCALE: NOTED
 DRAWN BY: JEA/ED
 APPROVED: S.M.
 DRAWING: 8052-PRELIM.dwg