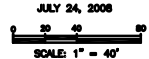
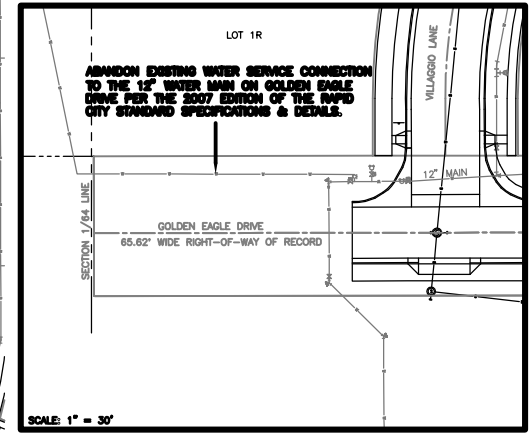


VICINITY MAP

NOTE: CONTOURS SHOWN HEREON WERE GRAPHICALLY SCALED FROM USGS QUADRANGLE MAP.

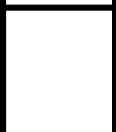


- NOTE:**
- FM: 312 L.F. OF 1" COPPER WATER SERVICE W/ CURB STOP. CONNECT TO EXISTING WATER MAIN PER THE 2007 EDITION OF THE RWPD CITY STANDARD SPECIFICATIONS & DETAILS.
 - FM: 20.3 L.F. OF 4" SEWER SERVICE W/ CLEANOUT. CONNECT TO EXISTING SEWER MAIN PER THE 2007 EDITION OF THE RWPD CITY STANDARD SPECIFICATIONS & DETAILS.



SCALE: 1" = 30'

SPERLICH Consulting, Inc.
 821 Columbus St., Suite 100, Oak Creek, WI 53091
 TEL: (608) 724-4040 FAX: (608) 724-4048
 E-MAIL: doug@sperrlichinc.com
 "Engineering - Planning - Training"



DATE	BY	REVISION

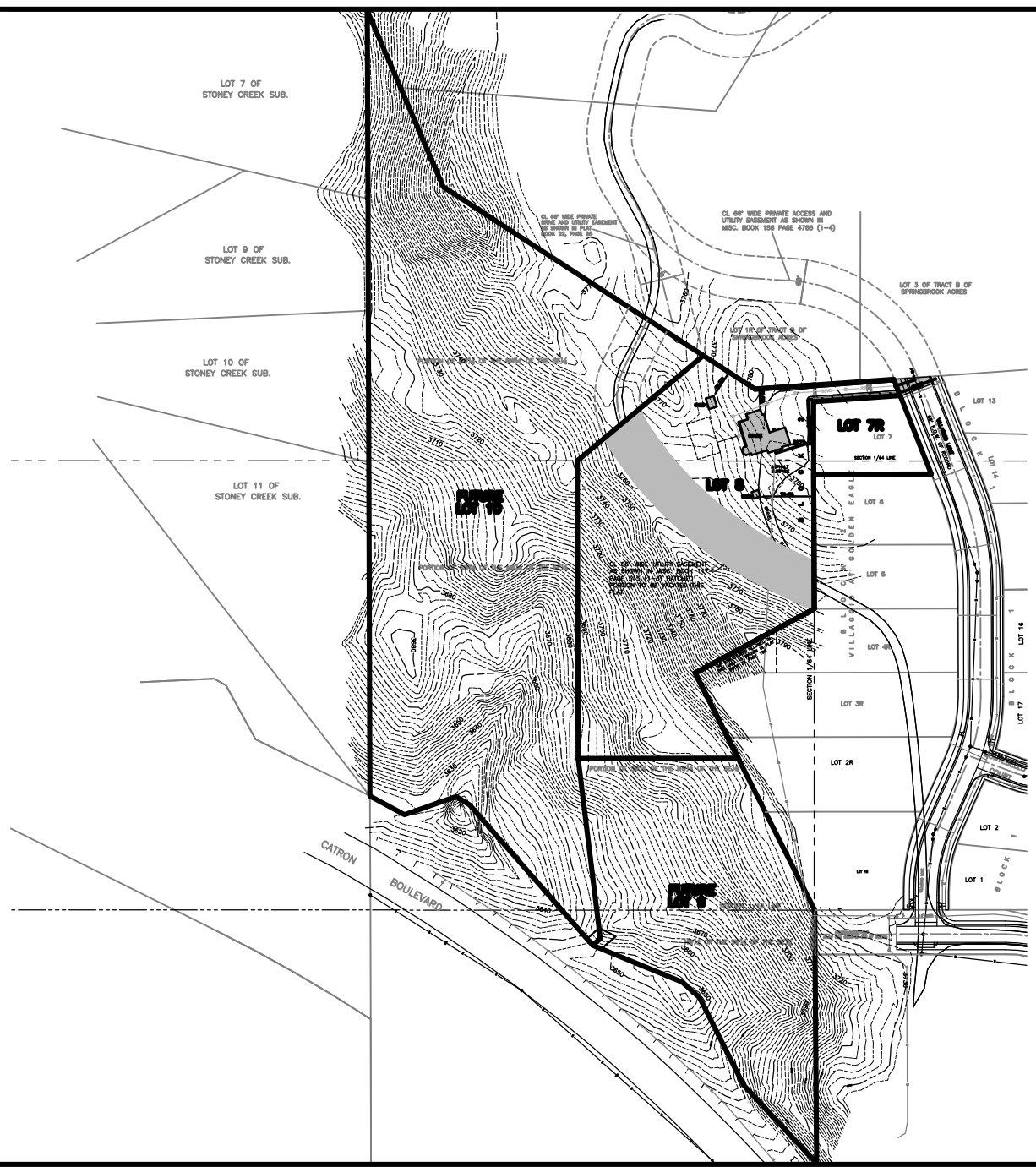
LEGAL DESCRIPTION

PORTION OF 10 1/4 OF THE NW 1/4 OF THE SE 1/4 OF SECTION 17, T14N, R10E, S12W, CO. WAUKESHA, WI. AS SHOWN IN PLAT BOOK 22, PAGE 85 AND MISC. BOOK 158, PAGE 4785 (1-4).

DRAWN BY: JRM

SEWER PLAN

LOT 7R THRU 10 OF BLOCK 2 THE VILLAGGIO AT GOLDEN EAGLE



NOTE: CONTOURS SHOWN HEREON WERE GRAPHICALLY SCALED FROM USGS QUADRANGLE MAP.

SPERLICH
 Consulting, Inc.
 822 Colorado St., Suite 110, City, CO 80770
 TELE: (303) 726-4940 * FAX: (303) 726-4048
 E-MAIL: doug.sperlitch@sperrlich.com
 *Engineering *Surveying *Planning

DATE	BY	REVISIONS

LEGAL DESCRIPTION

SECTION 1/4 1/4 NE 1/4 4 SW 1/4 4
 T11N R10W S4E
 BLOCK 10 OF THE VILLAGE OF GOLDEN EAGLE
 SUBDIVISION, COLORADO

DATE PLOTTED: 09/05/08

OVERALL SUB PLAN
 LOT 7R THRU 10 OF BLOCK 2
 THE VILLAGE AT GOLDEN EAGLE

PROJECT NUMBER

3107

SHEET

2 / 2