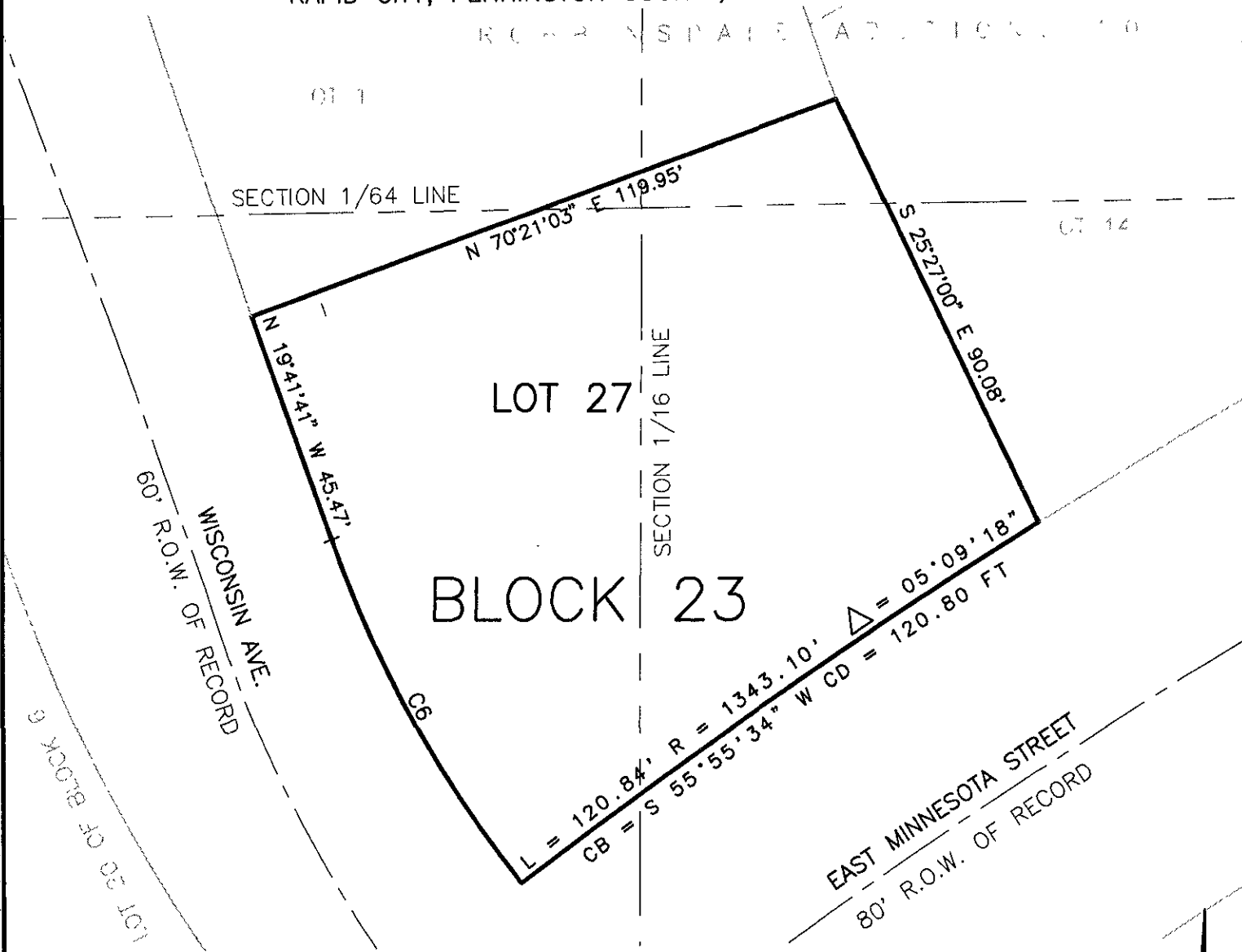


EXHIBIT "A"

# COMP PLAN AMENDMENT TO FUTURE LAND USE PLAN LDR TO LDR II

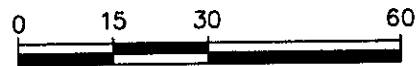
LOT 27 OF BLOCK 23 OF ROBBINSDALE ADDITION NO.10  
 LOCATED IN THE NW1/4 OF THE SE1/4 OF THE SE1/4, THE E1/2 OF THE NW1/4  
 OF THE SE1/4, AND IN THE SW1/4 OF THE NE1/4 OF THE SE1/4,  
 ALL IN SECTION 13, T1N, R7E, B.H.M.,  
 RAPID CITY, PENNINGTON COUNTY, SOUTH DAKOTA

ROBBINSDALE ADDITION NO. 10



CURVE	LENGTH	RADIUS	DELTA ANGLE	CHORD BEARING	CHORD DISTANCE
C6	75.53	236.12	18°19'43"	N 28°51'00" W	75.21

NOVEMBER 10, 2008



SCALE: 1" = 30'

