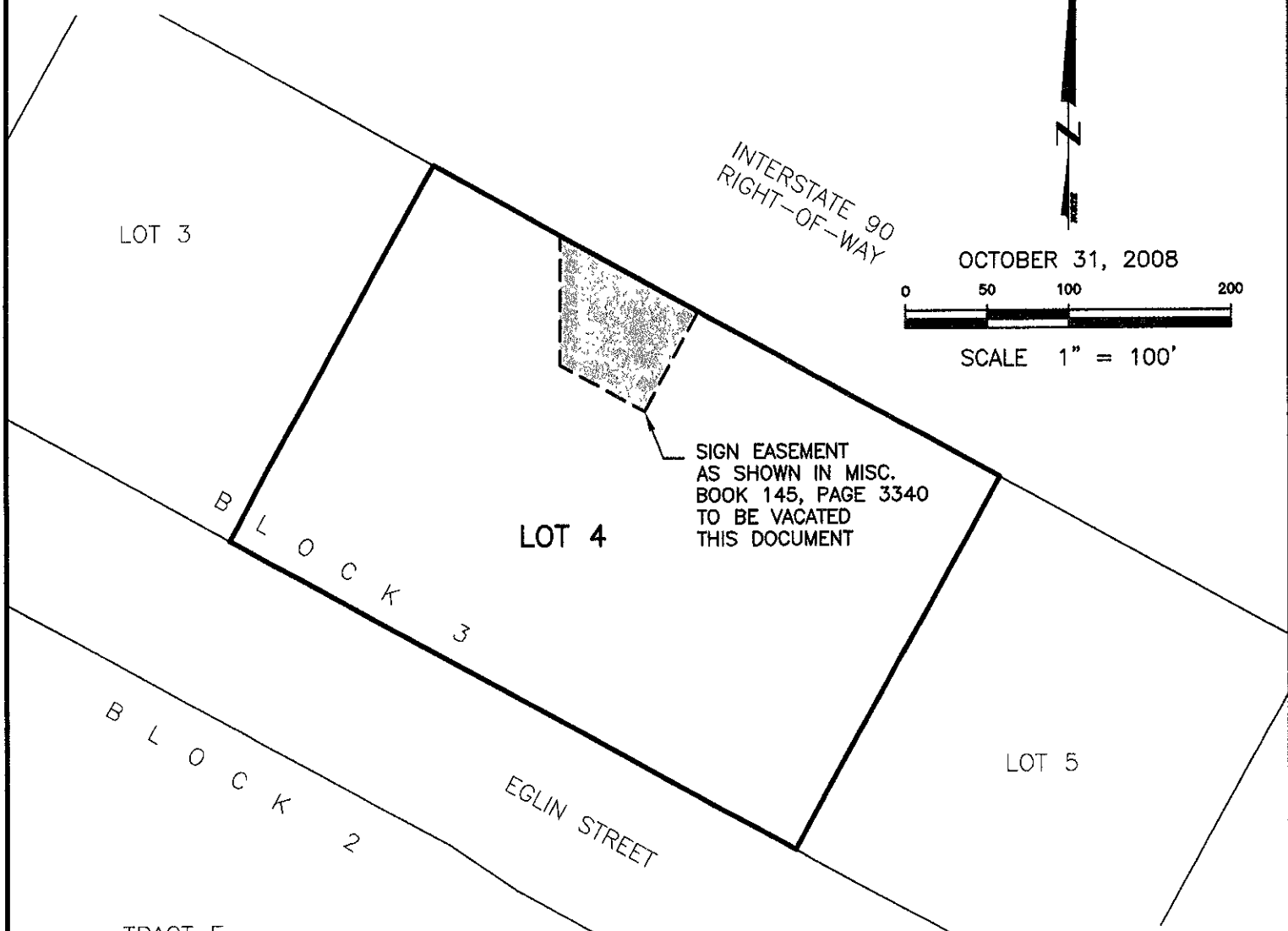


EXHIBIT 'A'
**VACATION OF SIGN EASEMENT
LOT 4 OF BLOCK 3, RUSHMORE CROSSING**

LOCATED IN THE SE1/4 OF THE SW1/4,
SECTION 29, T2N, R8E, BHM,
RAPID CITY, PENNINGTON COUNTY, SOUTH DAKOTA



OCTOBER 31, 2008



SCALE 1" = 100'

SIGN EASEMENT
AS SHOWN IN MISC.
BOOK 145, PAGE 3340
TO BE VACATED
THIS DOCUMENT

RECEIVED

NOV 12 2008

Rapid City Growth
Management Department

Renner & Associates, LLC.

616 Sixth St. * Rapid City, SD 57701 * 605/721-7310

FAX: 605/721-7313 * E-MAIL: Gary@RennerAssoc.com

Spearfish Office: 605/717-0016

