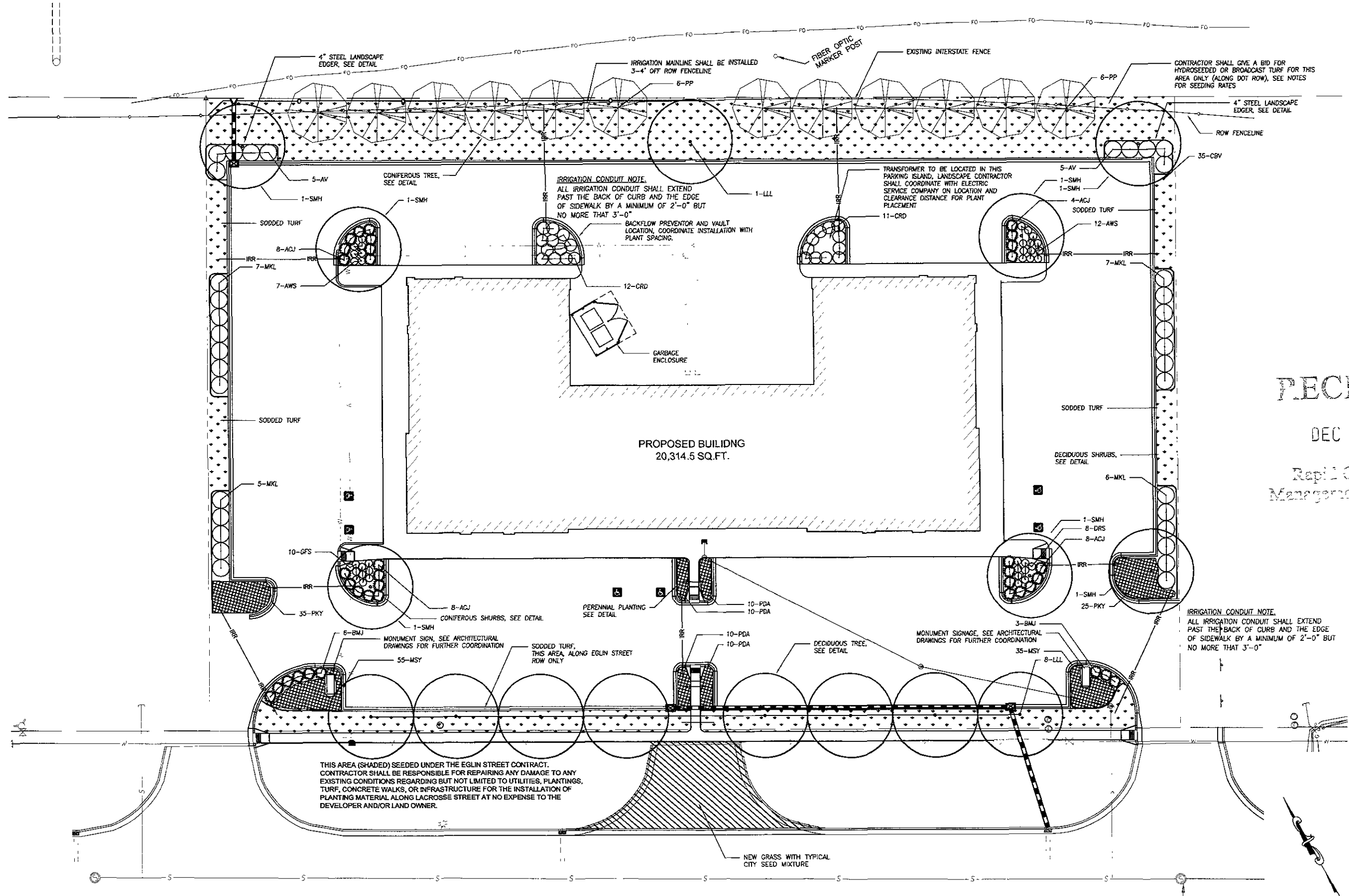


NOTE: CONTRACTOR SHALL BE RESPONSIBLE FOR REPAIRING ANY DAMAGE TO ANY EXISTING CONDITIONS REGARDING BUT NOT LIMITED TO UTILITIES, PLANTINGS, TURF, CONCRETE WALKS, OR INFRASTRUCTURE FOR THE INSTALLATION OF PLANTING MATERIAL AND IRRIGATION AT NO EXPENSE TO THE DEVELOPER AND/OR LAND OWNER.



PRELIMINARY FOR REVIEW ONLY

CITY OF RAPID CITY
GROWTH MANAGEMENT DEPT
DEVELOPMENT SERVICES

Plans are reviewed for general conformance with applicable governmental regulations, stipulations, design criteria and engineering standards. The City of Rapid City does not certify the suitability, adequacy or completeness of the plans or design which are the responsibility of the engineer of record. All necessary permits shall be obtained prior to construction of the proposed public improvements.

Engineering Reviewer	Date
COMMENTS	
Internal Job No. 02-0028 60	Designed By MSS
Drawn By MSS	Survey Date 11/08
Surveyed By RENNER & ASSOCIATES	Submittals

RECEIVED
DEC 05 2008
Rapid City Growth Management Department

OUTLOT 14
RUSHMORE CROSSING
BLOCK 3 - LOT 4

Project Name
Sheet Name

PLANTING PLAN

Sheet Number
8 of 9

