

Sheridan Lake Road Neighborhood Area Future Land Use Map

Legend

Future Land Use Designations

- | | | | |
|--|---------------|--|-------------------------------------|
| | RR | | Public w/Drainage |
| | Park Forest | | Flood Hazard |
| | LDR | | Detention Area |
| | LDR II | | Landscape Buffer |
| | LDR w/PRD | | FEMA Q3 Data - Flooplain |
| | PRD 1 du/10ac | | Alternate Land Use of Public |
| | PRD 1 du/3ac | | Sheridan Lake Road |
| | PRD 1 du/2ac | | Rapid City Limits |
| | PRD 1 du/ac | | Rapid City Utility Service - Tier 1 |
| | PRD 1.5 du/ac | | |
| | PRD 2 du/ac | | |
| | MDR | | |
| | MDR w/PRD | | |
| | OC | | |
| | OC w/PCD | | |
| | NC | | |
| | NC w/PCD | | |
| | GC | | |
| | GC w/PCD | | |
| | Public | | |

Major Street Plan

- Principal Arterial
- Proposed Principal
- Minor Arterial
- Proposed Minor
- Collector
- Proposed Collector

Bike Routes

- Existing Bike Path
- Proposed Bike Path
- Proposed Bike Lane
- Proposed Bike Route
- Proposed Bike Trail

1:48,000

Prepared by
Rapid City Area Metropolitan
Planning Organization
November 5, 2008



City of Rapid City Certification

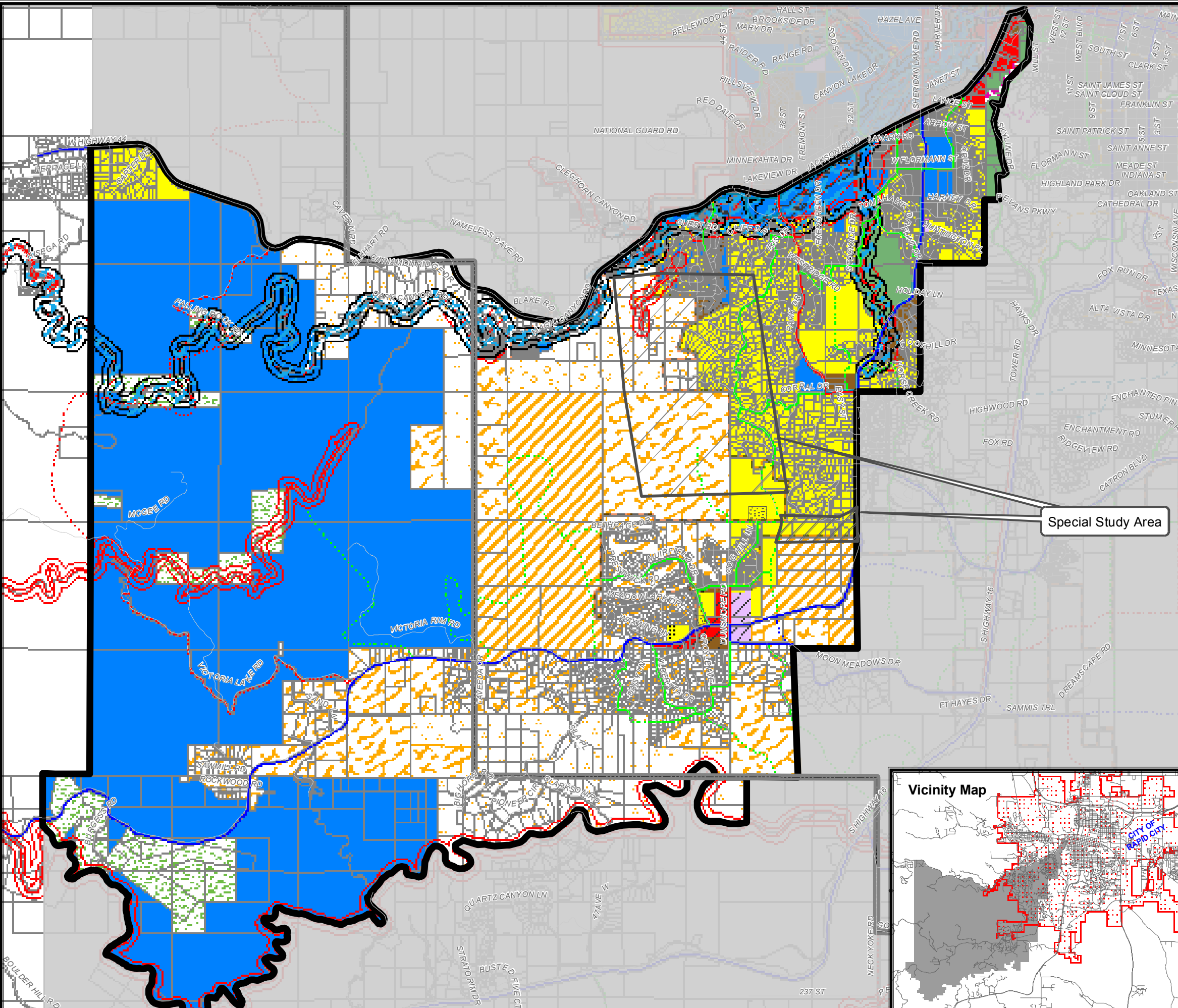
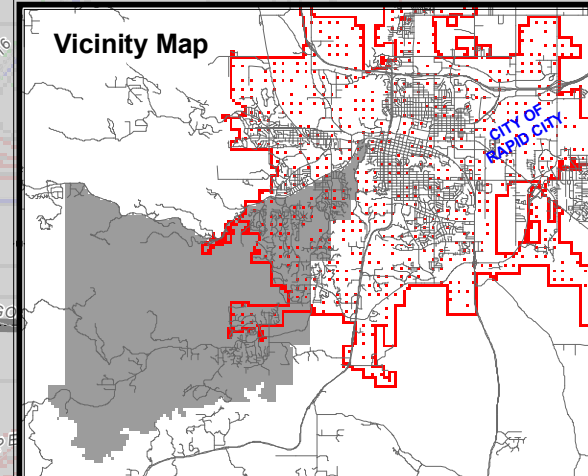
I do hereby certify that the Sheridan Lake Road Neighborhood Area Future Land Use Plan, an Amendment to the Comprehensive Plan, was adopted by the Rapid City Council on _____, 2008. I further certify that original minutes of the Rapid City Council meeting on _____, 2008 are on file in the Finance Office.

Dated this _____ day of _____, 2008.

Mayor _____

Finance Officer _____ 08CA035

(SEAL) Planning Commission Approved: _____
City Council Approved: _____
Summary of Adoption Published: _____
Effective Date: _____



Special Study Area